

2022 Academic Year

What you need to know



#2022 AY

Dear Students

We look forward to welcoming you as you start your studies at Nelson Mandela University in 2022. From **24 January** our First-Year Success (FYS) Buddies will be engaging with you online. The FYS Orientation programme will start from **31 January** and **lectures will start on 14 February 2022.**

You probably have many questions about whether you need to attend all your classes, tutorials, lab and studio work, etc. on campus, or if some of this can be done online.



First-Year Success Orientation
31 January

A Safe Campus Environment

The good health and safety of all our staff, students and publics remains a paramount guiding principle.

We are thus committed to ensuring a safe and successful academic year amid the coronavirus pandemic. National alert level regulations require everyone to mask-up, practice physical distancing and to sanitise their hands. Likewise, the University must adhere to COVID-19 compliance regulations, which include ensuring our venues conform to ventilation requirements, physical distancing expectations and all other hygiene protocols. We also limit the number of academic activities on campus to safely support students and staff.

The good health and safety of all our staff, students and publics remains a paramount guiding principle.

Vaccinations are the leading prevention strategy to protect students and staff from COVID-19 and to help end the pandemic. Vaccinations are now widely available at no cost and there are vaccination sites on our campuses. We strongly encourage everyone to take up the opportunity to be vaccinated as this fosters a safer campus environment for everyone.

As we continue to learn to co-exist with the pandemic, the University has established a consultative team to develop a framework to guide our decisions, inclusive of vaccination advisory measures, to continue to foster a safe environment and ensure a successful start to #2022AY.

GET YOUR



VACCINE

In turn, students will be asked to commit to COVID-19 requirements before accessing campus. By doing so, students will be committing to behaving in safe ways and adhering to COVID-19 health and safety protocols.

Study Delivery Differs from Programme to Programme

In general, **some programmes will be fully online**, while others will be a blend of content taught online and in person mask-to-mask and experiential learning (e.g. lab and studio work, practical sessions, and clinical training) being mask-to-mask on campus or in the workplace.



Where a programme only delivers learning **online**, students do not have to come onto campus. This means that these students can learn remotely (e.g. from home or a student residence, see Online Requirements box) and they will be provided with learning and psychosocial support.

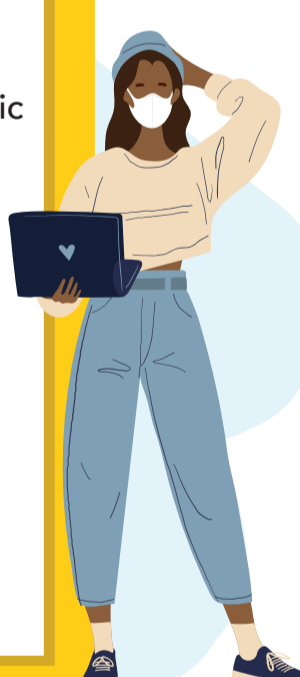
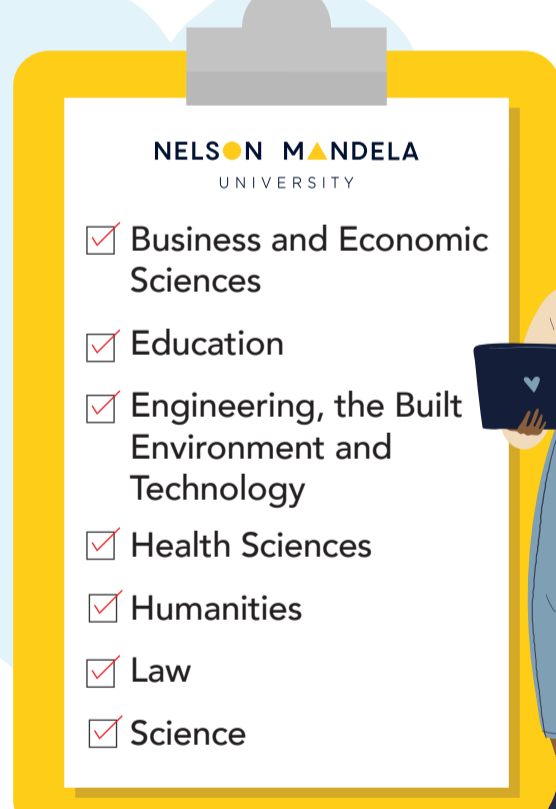


Where a programme requires **mask-to-mask** on-campus sessions, these students must be living on or around the campus where their programme is offered in Gqeberha or George. It is thus important that these students make the necessary accommodation arrangements.

Your faculty will notify you if you are required to attend on-campus activities or if you can learn remotely online. You can also check this yourself by **selecting your faculty below** and then finding your programme to see if you must attend on-campus mask-to-mask activities or if you can learn online.

Find your Programme

by selecting the appropriate faculty from the list below:



Online Learning Requirements & Support

Students who learn **online** will need a:

- Laptop or desktop computer
- Smartphone
- Reasonably stable connection
- Place to study to effectively learn online from home (remotely).



Students who do not have access to all of these will need to be in Gqeberha or George to use the University's general and specialised computer labs and Wi-Fi on campus and in on- or accredited off-campus student residences, so that they can engage in online learning.

Return-to-Campus Protocols

Reminder for students coming to campus:



Wear your mask



Show and scan your student card



Show results of self-screening



Your temperature will be taken

Registration



Students can get all registration-related information **here**.

You will get your student card after registration

Furthermore, first year students can access details regarding our orientation programme **here**.

Stay informed



Lastly, I would like to encourage you to stay in touch with us. Visit the **Nelson Mandela University website**, the **coronavirus webpage** and **social media platforms** for regular updates and to check your student email for communication from the University.



Professor Cheryl Foxcroft, DVC: Learning and Teaching



#SaveLives as we #Start2022AY