

## 2017 SENIOR STUDENTS - FINANCIAL FLOW CHART FOR REGISTRATION (excluding International Students)

### 2017 DOWN-PAYMENT AMOUNTS PAYABLE BEFORE REGISTRATION

(This amount will be credited towards your student fees account. Previous debt must be fully settled).

#### DEGREE PROGRAMMES and related Occasional Studies

Full time students R 6 700  
Part time students R 3 800

#### DIPLOMA / CERTIFICATE PROGRAMMES and related Occasional Studies

Full time students R 4 700  
Part time students R 3 000

**RESIDENCES (students at all campuses)** R 4 800

#### NMMU banking details for student account payments and registration down-payments

Bank: STANDARD Bank  
Branch: Rink Street, Port Elizabeth  
Branch code: 051001  
Account name: NMMU Student Deposit  
Account no: 08 026 5855  
Reference: **Your** student number (without the 's' prefix – Important!)  
Email payment receipt to: studentaccounts@nmmu.ac.za

Bank payments do NOT reflect immediately on your student account.  
Allow 2 working days for processing thereof. Registration/results will only be cleared after the payment reflects on the student account!  
**In the event of a query kindly ensure that you have a copy of the direct deposit/internet payment in your possession**

#### Email address for external sponsorship confirmation letters

studentaccounts@nmmu.ac.za

NOTE: Sponsorship and bank loan confirmation letters must indicate that payments will be made directly to the NMMU and must be submitted annually. It must contain the student number, be on an official company letterhead, be addressed to the NMMU, must CONFIRM the sponsorship and the commitment amount, the signee cannot be the student/family member and the sponsorship is subject to the approval of the NMMU. Sponsorship that is subject to any academic performance is not accepted at registration.

**A copy of the letter must be in your possession at all times during registration periods**

#### Student Accounts Guide

The 2017 Student Accounts Guide contains all the rules and regulations pertaining to student fees and will be emailed to students after registration.

For students registering on-line, the guide is available on the NMMU website at address:

<http://www.nmmu.ac.za/studentaccountsguide>

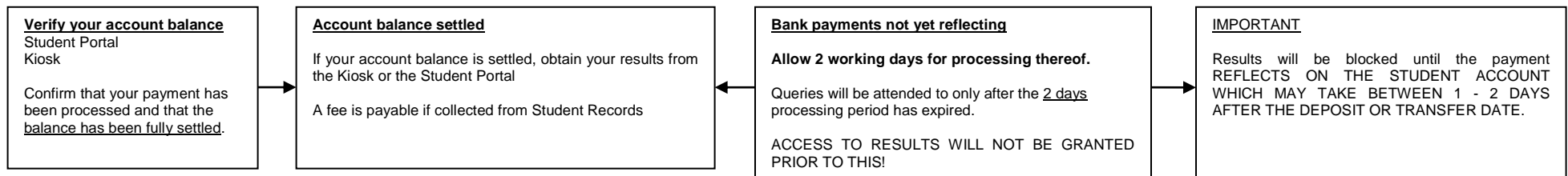
#### Important

Only payments made at NMMU Cashier Pay Points and credit card payments made via the NMMU website <https://paymentsgateway.nmmu.ac.za/PaymentOption.aspx> reflect immediately on your student account.

**Direct bank or internet payments must reflect on the student account before registration will be permitted. It may take up to 2 days after the date of the deposit or transfer therefore your payment must be made at least 2 days prior to registration.**

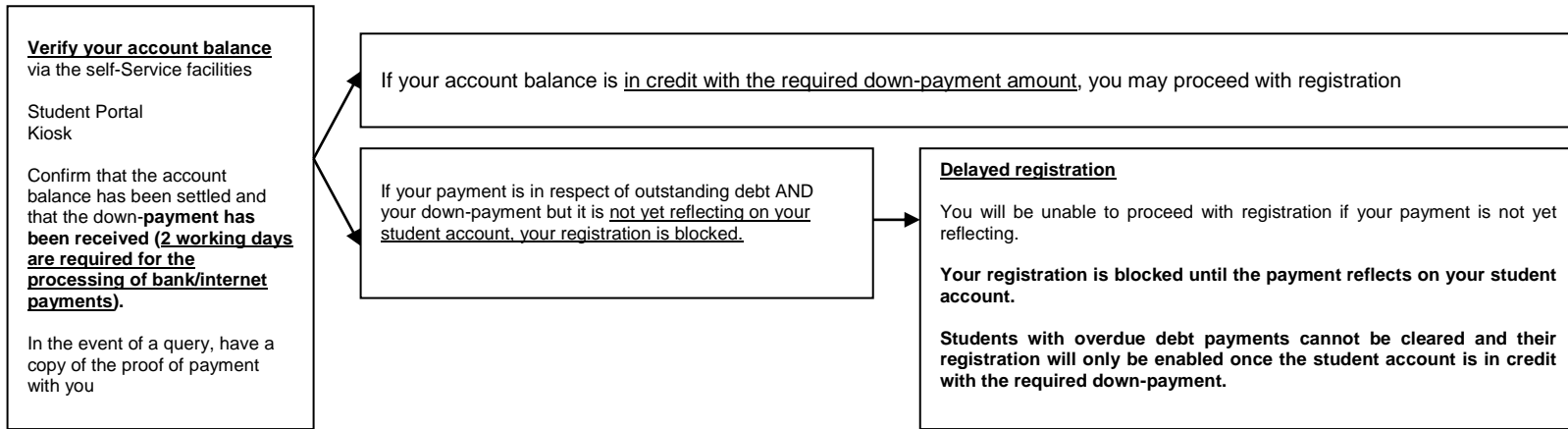
**Access to results is only enabled once the payment reflects on the student account!**

## RESULTS - Access is blocked until payment reflects on the student account

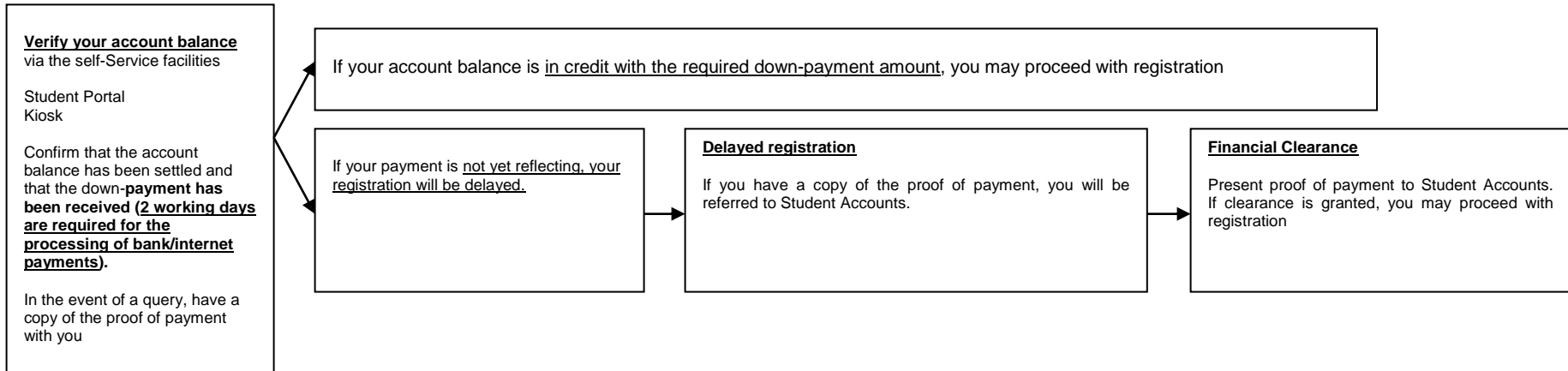


# REGISTRATION

## Outstanding debt and down-payments must be paid 2 days prior to registration



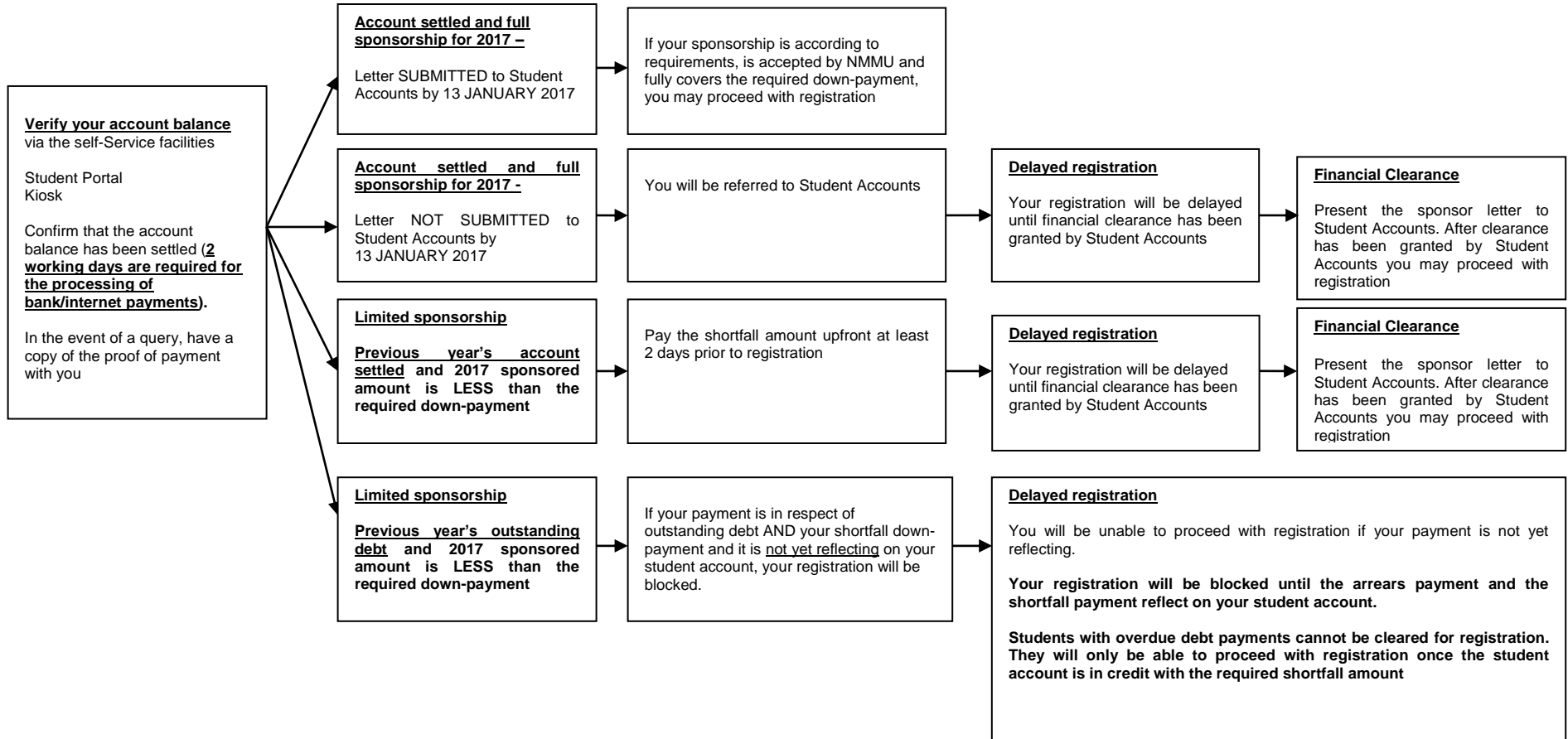
## REGISTRATION - Down-payments (no previous outstanding debt)



# EXTERNAL SPONSORSHIPS - Sponsor letters

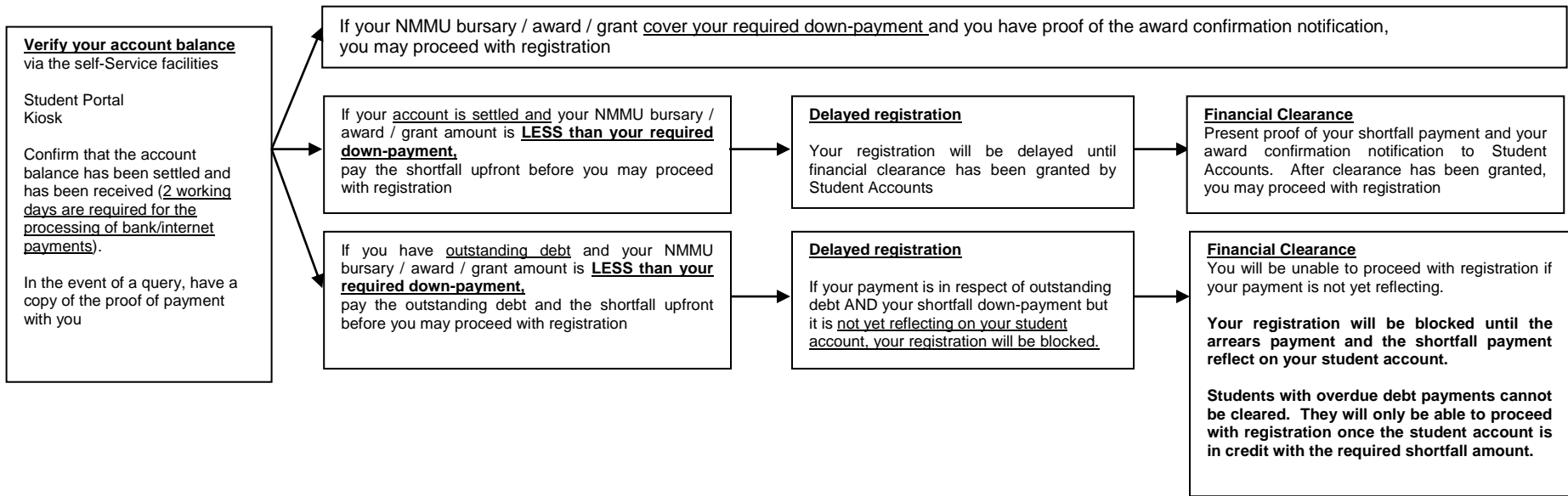
Only Sponsorship letters received by Student Accounts by  
**13 JANUARY 2017**  
 will be processed and the students will be pre-cleared for registration.  
 Outstanding debt must be settled 2 days before registration (bank payments)

**Email address for sponsorship confirmation letters:**  
[Studentaccounts@nmmu.ac.za](mailto:Studentaccounts@nmmu.ac.za)  
 A copy of the official company letter addressed to the NMMU must be in  
 your possession at all times during registration periods



# NMMU BURSARIES / AWARDS / GRANTS

## (Outstanding debt must be paid 2 days before registration)



## NSFAS SUCCESSFUL CANDIDATES

Successful zero EFC students are automatically cleared for registration on the system.

If you are not cleared for registration, there is a problem and you should query it with Financial Aid (North campus)