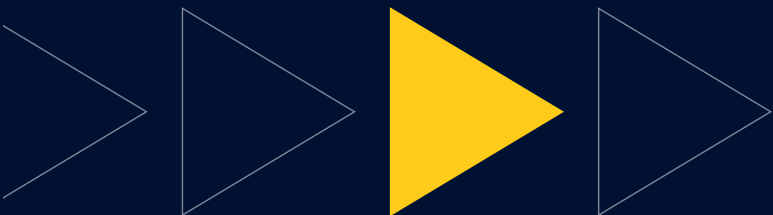


NELSON MANDELA UNIVERSITY



Faculty of Humanities



Student Access & Enrolment Office
Gqeberha Campuses: 041 504 1111

humanities.mandela.ac.za
info@mandela.ac.za

School of Visual and Performing Arts

Department of Music & Performing Arts
Department of Visual Arts

School of Language, Media and Communication

Department of Linguistics and Applied Linguistics
Department of Media & Communication
Department of Languages & Literature

School of Governmental and Social Sciences

Department of Public Management & Leadership
Department of History & Political Studies
Department of Philosophy
Department of Sociology & Anthropology

Prospective student are advised to contact the Student Access & Enrolment Office prior to applying or refer to the faculty website and the prospectus for more information regarding any qualifications offered within the Faculty of Humanities.

Message from the Vice-Chancellor

Welcome

It is my singular honour and privilege to welcome you to the Nelson Mandela University family. Our University is named after the iconic global statesman Nelson Rolihlahla Mandela, who transformed this country through his unwavering commitment to social justice and equality.

Our vision is to be a dynamic African university, recognised for its leadership in generating cutting-edge knowledge for a sustainable future. That is why we are committed to providing inclusive and transformative education that will prepare you to succeed in a diverse and globalised world.

The idea of 'the African university' is for us not simply a catchy byline or tagline, but an ethical injunction that should make clearer the gifts of our country and continent, including its peoples, knowledges, cultures, and languages. In short, the African university should offer us a different way of encountering the world.

Our academic and professional programmes range from certificate-level through to research doctorates, and our qualifications are recognised and accredited by the relevant professional bodies, locally and, in some cases, internationally.

A wide-range of academic programmes are offered in seven faculties:

- Business & Economic Sciences
- Education
- Engineering, the Built Environment & Technology
- Health Sciences
- Humanities
- Law
- Science

We prepare our graduates to become well-rounded citizens, that are socially aware on a global scale, capable of making a difference in whatever path they choose.

As you will see from this guide, Nelson Mandela University offers you an ideal environment and facilities, excellent learning opportunities, a wide spectrum of beyond-the-classroom activities, and a solid values-driven foundation on which to pursue your future dreams.

We look forward to welcoming you to Nelson Mandela University in 2027.

Prof Sibongile Muthwa

Prof Sibongile Muthwa
Vice-Chancellor

Umyalezo osuka kuSekela-Ngqonyela

Wamkelekile

Yinyhweba newonga elilodwa ukunamkela kusapho lweYunivesithi iNelson Mandela. IYunivesithi yethu ithiywe emva kwenjojeli yehlabathi uMongameli uNelson Rolihlahla Mandela, owenza inguqu kweli lizwe ngokuzibophelela kwakhe okungagungqiyo kubulungisa bezentlalo kunye nomakulinganwe.

Umbono wethu kukuba yiYunivesithi yaseAfrika eshukumisayo, ethathelwa ingqalelo ngesikhokelo sayo sokuvelisa ulwazi olungazange lwabakho ukulungiselela ikamva elizinzileyo. Kungoko sizibophelele ekunikazeleni ngemfundo engenguqu noqukaniso eza kukulungiselela ukuba uphumelele kwihlabathi leyantlukwano elibumbeneyo.

Ingcamango yeYunivesithi yaseAfrika ayikokutsala nje amehlo, koko yindlela elungileyo nenocwangco yokuziphatha eza kwenza kucace iziphiwo zelizwe lethu nelizwekazi, ezibandakanya abantu, ulwazi, kunye neelwimi. Ngamafutshane, iYunivesithi yaseAfrika mayisinike indlela eyahlukileyo yokuqubisana nehlabathi.

Iinkqubo zethu kwezemfundo nezobungcali ngokwecandelo ukusukela kwinqanaba lesatifikayeti ukuya kuphandonzulu lobuGqirhalwazi, zithathelwa ingqalelo kwaye zamkelwe ngokusemthethweni ngamaqumrhu ezobungcali efanelekileyo, alpha ekhaya, maxa wambi awamazwe ngamazwe.

Intlaninge yeenkqubo zezemfundo inikezelwa kwiifakhalthi ezisixhenxe:

- EzeNzululwazi kwezoShishino nezoQoqosho
- EzeMfundo
- EzobuNjineli, iNdawo yoLwakhiwo nezobuChwepheshe
- EzeNzululwazi kwezeMpilo
- EzoLuntu
- EzoMthetho
- EzeNzululwazi

Sixhobisa izithwalandwe zethu ukuba zibe ngabemi abazinzileyo, abanolwazi ngezentlalo kwisigaba sehlabathi, abakwaziyo ukwenza umahluko nakweyiphi na inkalo abayikhethileyo.

Njengoko uza kubona kwesi sikhokelo, iYunivesithi iNelson Mandela inikezela ngendawo nezixhobo ezizizo, amathuba okufunda agwesileyo, nothotho lwemisebenzi yangaphaya kwegumbi lokufunda, kunye nesiseko esiluhlalima seenqobo ezisemgangathweni apho unokufezekisa amaphupha ekamva lakho khona. Sijonge phambili ekunamkeleni kwiYunivesithi iNelson Mandela ngowama2027.

Njing Sibongile Muthwa

Njing Sibongile Muthwa

Boodskap van die Visekanselier

Welkom

Dis is my besondere eer en voorreg om jou welkom te heet by Nelson Mandela Universiteit-se familie. Ons Universiteit dra die naam van die ikoniese wêreldleier Nelson Rolihlahla Mandela, wat ons land getransformeer het deur sy onvermoeide toewyding tot sosiale geregtigheid en gelykheid.

Ons visie is om 'n dinamiese Afrika-Universiteit te wees, wat erken word vir ons leierskap in die ontwikkeling van vooruitstrewende kennis vir 'n volhoubare toekoms. Daarom is ons daartoe verbind om inklusiewe en transformerende onderwys te bied wat jou sal voorberei om in 'n diverse en geglobaliseerde wêreld te slaag.

Vir ons is die idee van 'n "Afrika-Universiteit" nie bloot 'n treffende slagspreuk nie, maar 'n etiese oproep wat die rykdom van ons land en die kontinent duideliker moet laat uitstaan — insluitend sy mense, kennisstelsels, kulture en tale. Kortliks, die Afrika-Universiteit behoort vir ons 'n ander manier te bied om die wêreld te benader.

Ons akademiese en professionele programme strek vanaf sertifikaatvlak tot by navorsingsdoktorsgrade, en al ons kwalifikasies word erken en geakkrediteer deur die toepaslike professionele liggame, plaaslik en in sommige gevalle internasionaal.

'n Wye reeks akademiese programme word in sewe fakulteite aangebied:

- Besigheids- en Ekonomiese Wetenskappe
- Opvoedkunde
- Ingenieurswese, die Beboede Omgewing en Tegnologie
- Gesondheidswetenskappe
- Geesteswetenskappe
- Regsgeleerdheid
- Natuurwetenskappe

Ons berei ons gegradueerdes voor om veelsydige burgers te word wat wêreldwyd sosiaal bewus is en in staat is om 'n betekenisvolle verskil te maak, watter rigting hulle ook al volg. Soos jy in hierdie gids sal sien, bied Nelson Mandela Universiteit jou 'n ideale omgewing en uitstekende fasiliteite, uitmuntende leergeleenthede, 'n wye spektrum van aktiwiteite buite die klaskamer, en 'n stewige waardegedrewe grondslag, waarop jy, jou toekomsdrome kan bou.

Ons sien daarna uit om jou in 2027 by Nelson Mandela Universiteit te verwelkom.

Prof Sibongile Muthwa

Prof Sibongile Muthwa
Visekanselier



About Nelson Mandela University

Nelson Mandela University is the only university in the world that carries the name of Nelson Rolihlahla Mandela. We are committed to providing a welcoming and inspiring environment that is supportive, innovative, and diverse. Our students need to feel they are in a place of learning and discovery, founded on strong, egalitarian values that encourage them to express themselves, stretch themselves, and seek new solutions for a better world.

The University embraces Nelson Mandela's challenge to be "caring, responsible and innovative", and recognises the importance of continuously growing and adapting in the pursuit of knowledge, emancipation, and lifelong learning.

The university boasts more than a century of experience in quality higher education, research, and technological innovation. We unite the best traditions of both the academic and technological worlds – from entrance level (certificate) through to research level (PhD).

- We are the largest higher education institution in the Eastern and Southern Cape.
- 34 682 students are enrolled on seven different campuses – six in Nelson Mandela Bay (Gqeberha, formerly Port Elizabeth), and one in George.
- Programmes are housed within seven faculties (Business & Economic Sciences; Education; Engineering, the Built Environment & Technology; Health Sciences; Humanities; Law and Science), and in some cases, programmes are duplicated on more than one campus.
- The university's George Campus is situated at the foot of the Outeniqua Mountains in the picturesque coastal town of George.

With their spectacular natural surroundings – from beaches to mountains to game reserves – Nelson Mandela Bay and George are ideal places to spend your student years, offering all the advantages of city living in a vibrant and multi-cultural environment.

Student services

A wide range of student services and support facilities are offered on university campuses to assist you in every aspect of student life – from what to study, to finding suitable employment after graduation. The university offers a variety of social and cultural activities, which means you can have fun while you study. There is an extensive range of sport codes, associations, societies, clubs, and facilities, allowing you to make new friends, interact with your fellow students and explore subjects of mutual interest.

Below are some of the various services offered to our students:

Library and Information Services

Nelson Mandela University has a network of well-stocked libraries, computer laboratories, and student learning centres which enable students to obtain quality information resources and services required to excel in their various academic courses. These centres are located on all campuses and offer students a quiet space for studying.

Student Health Services

Students have access to a comprehensive primary health care service on every campus, and qualified medical personnel to assist with any health matters which may arise. All services are rendered by registered health care professionals e.g., professional nurses, medical doctors, and registered counsellors.

Emthonjeni Student Wellness

Emthonjeni Student Wellness consist of a team of professionally trained psychologists (clinical, educational, counselling and research psychologists), registered counsellors and intern psychologists who are registered with the Health Professions Council of South Africa. The centre helps students with career choices, job-seeking skills, and any social, personal, or academic problems which they may experience while at university. The centre offers advice in areas such as time management, study methods, personal, social, and emotional wellness, as well as career planning and employment readiness.

Student Development & Governance (SDG)

This department contributes towards the holistic development of students. The core functions of this department are the training and development of student leadership, the coordination of student life & events, and supporting student governance structures such as the Student Representative Council (SRC), the Student Housing Council; faculty representatives, the Sports Council, Oppidani and Rag. They also provide students with advice on the various student societies that you could join. There are currently 29 societies which students can join and these are categorised as academic, religious, developmental, social responsibility and political.

Arts, Culture & Heritage

Arts, Culture & Heritage focuses on the holistic development of students by creating opportunities for their participation in the arts. Arts and Culture provides an environment in which students can exercise and develop their need for cultural and artistic expression. You are provided with the opportunity to express your talents by joining a wide range of interactive, cultural, and active societies. These societies are diverse and vary from performing arts, dancing, music, drama, and choirs.

Student Representative Council (SRC)

The SRC is elected annually in a democratic election to represent the interest of students. The SRC is the only body which the university officially recognises as speaking on behalf of the students.

Oppidani (day students)

Students who do not live in a campus residence are known as Oppidani students. All non-residential Nelson Mandela University students are automatically members of the Oppidani House and are known as Oppies. Although Oppies live off campus, participation in non-academic life is encouraged.

Societies

Students can become a member of numerous student-run societies enabling them to have fun with likeminded students while gaining valuable leadership, communication, and social skills. There are presently 64 societies active on our various campuses, and these societies are categorised as either academic, religious, developmental, social responsibility or political.

Madibaz Youth Entrepreneurship Lab

The Madibaz Youth Entrepreneurship Lab aims to build an enabling entrepreneurial ecosystem at Nelson Mandela University through the advancement of support to new and existing youth entrepreneurs as well as through collaborations in areas of entrepreneurship development. The Entrepreneurship Lab also aims to embrace entrepreneurial mindsets and ethos amongst the students at Nelson Mandela University through practical entrepreneurship workshops, symposiums, mentorship, as well as opportunity for student entrepreneurs to run businesses on-campus.



Madibaz Sport


Madibaz sport offers a wide variety of competitive and recreational sport programmes for students and staff, as well as the wider university community. These programmes provide students with the opportunity to participate in various sport and recreational activities ranging from informal social games to highly competitive leagues where skills are tested against the best in the province and country. In addition, through the various high-performance programmes coordinated by the Madibaz High Performance Complex, the university plays a major role in the process of developing elite and potentially elite players.

Madibaz sport also provides club members with excellent sport facilities, scientific based coaching programmes, which includes organisational and administrative support. Well-equipped health and fitness centres offer professional gym facilities at student prices, and aid in sport performance testing, sport specific training and injury rehabilitation.



The following sport codes are offered on the various university campuses:

Athletics – Basketball – Boxing – Chess – Cricket – Football – Futsal – Golf – Hockey – Karate – Netball – Rugby – Rowing – Squash – Surfing – Swimming – Table Tennis – Tennis – Volleyball – Water polo



MADIBAZ

All teams have nicknames, or names by which they are popularly known. Those who work, study and play sport at Nelson Mandela University proudly refer to themselves as Madibaz. In addition to our name, the university also boasts a dolphin mascot, named Diba.

Admission to Nelson Mandela University

Overview

- Applications for early admission (excluding MBChB, BPharm & BRad applications) should be submitted by **3 August 2026**. Late applications (excluding MBChB, BPharm & BRad applications) will however be considered after this date, based on academic merit, until **30 September 2026**. Places are limited and it is therefore in your best interest to submit your application early.
- MBChB applications close on **30 June 2026**. Places in the MBChB degree are limited and it is therefore in your best interest to submit your application early.
- Bachelor of Pharmacy (BPharm) and Bachelor of Radiography (Diagnostic) applications also close on **30 June 2026**. Places in the Bachelor of Radiography (Diagnostic) & Bachelor of Pharmacy (BPharm) degrees are limited, and it is therefore in your best interest to submit your application early.
- Prospective students must meet the statutory minimum requirements based on the National Senior Certificate (NSC), or equivalent school-leaving certificate for admission to a higher certificate, diploma, or degree qualification, in order to be considered.
- Admission to an undergraduate programme will be further determined by an applicant's Applicant Score (AS).
- Submission of a complete application does not mean that you have been accepted as a student, or that you may register. All prospective students are selected in accordance with the admissions policy of the university, and applicants will be notified of the outcome of their application by the Student Access and Enrolment Office.
- If you are currently in Grade 12, conditional acceptance is based on your **Applicant Score (AS)** obtained in your Grade 11 final, or Grade 12 June or Grade 12 September examinations. However, if you have already matriculated then your final Grade 12 NSC, SACAI, or IEB results will be used to evaluate your application for conditional acceptance. Please note that the final decision (to be made in January) is based on your final Grade 12 NSC/SACAI/IEB exam results.
- Applicants with the highest Applicant Scores (AS) for a programme are prioritised for final selection, also called a firm offer - until all spaces are taken. Final selection only takes place in January when final Gr 12 examination results are available. To increase your chances of acceptance applicants will need to have achieved excellent results in their final exam or have achieved far more than the minimum admission criteria required for a programme, to be considered.
- Once you've submitted your application you may be required to submit a portfolio of evidence, audition or attend an interview. Your admission decision will then only be made once one, or all of these additional requirements have been completed.
- In addition to the general university admission requirements, each programme also has its own specific requirements.
- Applicants with alternate, international, or foreign qualifications must satisfy the requirements laid down by the Matriculation Board to qualify for a certificate of exemption for a particular alternate, international or foreign school-leaving qualification. These requirements are contained in Government Gazette No. 31674, 5 December 2008, and can be found on the Universities South Africa (USAF) website <https://mb.usaf.ac.za/sc-government-gazette-5-december-2008/>. Applications for such certificates must be made to the Matriculation board directly: <https://mb.usaf.ac.za/>
- In the case of applications by candidates who have studied at other higher education institutions accredited by the South African Qualifications Authority (SAQA), the results obtained at such institutions will be considered, together with their academic record and certificate of conduct.
- There are limits to the number of students that can be admitted to each programme.
- **If a programme is full, you may be denied admission even though you meet the minimum requirements.**

- Prospective students who **matriculated prior to 2008** must please contact the university's Student Access & Enrolment Office to determine their admission requirements.
- For more information on the application process please contact **041 504 1111** or visit our website <https://www.mandela.ac.za/Study-at-Mandela> before applying.
- **Please note that admission requirements are subject to change. Information in this programme guide was correct as of April 2026.**



Admission Requirements

National Senior Certificate (NSC)

- The table below explains what the minimum statutory requirements for each qualification level are (Higher Certificate, Diploma or Degree).
- The university has also set its own additional minimum entry requirements.

Qualification	Minimum statutory entry requirement
Higher Certificate	Pass the NSC, with a minimum of 30% in the language of learning and teaching of the higher education institution, together with any other university requirements.
Diploma	Pass the NSC with a minimum of 30% in the language of learning and teaching of the higher education institution, coupled with an achievement rating of 3 (40–49%) or better in four recognised NSC 20-credit subjects, together with any other university requirements.
Bachelor's Degree	Pass the NSC with a minimum of 30% in the language of learning and teaching of the higher education institution, coupled with an achievement rating of 4 (50–59%) or better in four NSC 20-credit subjects together with any other university requirements.

Please note that the achievement of the minimum NSC admission requirements does not necessarily guarantee admission to any programme or field of study at Nelson Mandela University.

How to calculate your Applicant Score (AS)

- First look-up the **Applicant Score (AS)** for the qualification you are applying for – also note any required subjects.
- Your Applicant Score (AS) will be different if you took Mathematics, Mathematical Literacy or Technical Mathematics at school.
- Your Applicant Score (AS) is calculated using **six** subjects. Please note that Life Orientation (LO) is excluded.
- Write down your Grade 12 subjects and the most recent percentage (%) obtained in each subject (**NO** Gr 12 March results).
- You **MUST** include the results for the following **three fundamental subjects: 1)** Home language; **2)** 1st Add. Language; and **3)** Maths; or Maths Lit; or Technical Maths.
- For applicants with seven Grade 12 NSC/IEB subjects, their AS is calculated by adding the percentages for their six 20-credit subjects (**Note** that the Life Orientation percentage is not included as it is a 10-credit subject). This gives a score out of 600.
- In addition, for those applicants from quintile 1 to 3 schools who attain 50% or higher for Life Orientation, 7 additional points are added to their score out of 600 to arrive at their final AS.

- Compare your AS & subject requirements to the minimum needed for the qualification you want to apply for.
- If your Applicant Score (AS) & subject requirements are below the minimum required, you will need to consider another qualification for which you do qualify.

* All South African **public** ordinary schools are categorised into five groups, called quintiles. Quintile 1 to 3 are non-fee-paying schools, while Quintiles 4 & 5 are fee paying schools.

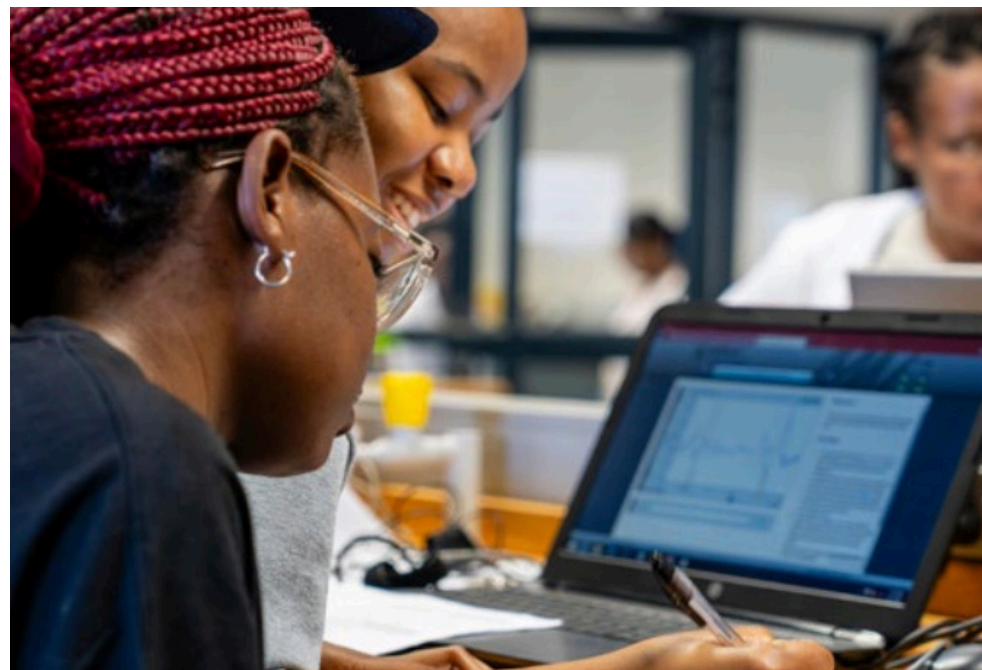
The table below provides an example of how to calculate the AS for:

- Applicant 1** who has 7 NSC Grade 12 subjects, who is applying for a programme with Life Science and Physical Science as required subjects: and
- Applicant 2** who is applying for the same programme, but who took 8 subjects in Grade 12.
- Applicant 3** who is applying for the same programme, but who is from a quintile 1, 2 or 3 school.

NSC Subject	Applicant 1		Applicant 2		Applicant 3 from quintile 1 to 3 school	
	% obtained	% used to calculate AS	% obtained	% used to calculate AS	% obtained	% used to calculate AS
isiXhosa (Home Language)	78	78	78	78	78	78
English (1st Additional Language)	60	60	60	60	60	60
Mathematics	65	65	65	65	65	65
Life Science	62	62	62	62	62	62
Physical Science	50	50	50	50	50	50
History	–	–	60	60	–	–
Geography	55	55	55	–	55	55
Life Orientation	88	–	88	–	88 LO>50%	7
APPLICANT SCORE (AS)		370		375		377

How do you apply?

- Applicants can apply online by logging on to www.mandela.ac.za/Study-at-Mandela
- Ensure that you meet the minimum **Applicant Score (AS) and subject requirements** before submitting your completed online application and supporting documentation.
- Please note that certain qualifications have additional selection processes, for example a portfolio of evidence, interview, or fitness/medical tests.
- **No application fee** is required for South African citizens, but there is an application fee for International Students.
- **Remember to include your cell number on your form**, as we will be sending you your application status and other important information via this number (Please do not include +27 or any spacing when you enter your cell number).
- Applications for early admission should be submitted by **3 August 2026**.
- Late applications will still be considered up to **30 September 2026**, but as space is limited, we advise applicants to submit/complete their application form before the August closing date.
- MBChB, BPharm and Bachelor or Radiography (Diagnostic) qualifications close earlier (**30 June 2026**) than the dates listed above. Applicants need to consult the student access & enrolment office, website, or faculty to determine annual closing dates. No late applications will be considered after the published closing date.



Online applications

- To apply online, you will need your **own cell number** and a valid **personal email address** (should you not have an e-mail account, please open one before proceeding with your online application).
- Online application(s) are **divided into two sections** (please ensure you complete both).
- **Section 1** (applicant profile) – before applying online you will first need to create an applicant profile/account, before you will be able to access the online application platform. This does not mean that you've applied, nor will you be considered for admission yet.
- Once created, you'll be sent an e-mail with a link in which you need to verify your e-mail address (should you not have received this e-mail, please look in your spam mailbox before contacting the University).
- Using the link provided, login using your newly created username and password to begin your online application.
- **Section 2** (online application) - complete all relevant sections and upload the support documents required, to finalise your online application. If you have indicated you require student housing, a separate online application will need to be completed.
- Guidelines on how to apply for student housing will be emailed to the account you have registered with.
- Remember to include **all your supporting documentation** with your online application as a PDF or JPEG formatted attachment.
- No changes can be made after you have submitted your application form. If you need to update your online application, refer to the online application guideline document for the process you need to follow.
- Should you require support in completing your online application, you may contact our Contact Centre on **041-504 1111**, or e-mail: info@mandela.ac.za; or you can also log a query on <https://crm.mandela.ac.za>

Important documentation

In order for the university to finalise your application you are requested to submit the following support documentation with your application:

- A certified copy of your **identity document** (ID document compulsory for SA Citizens – your application cannot be processed without a certified copy of your ID. You may also provide your ID number or serial number that appears on your birth certificate should you still be waiting for your ID Document to be issued).
- A certified copy of **your latest school results** (grade 11 final, or grade 12 June/September results, or final school leaving results if you have already completed Gr 12 (e.g., if you are currently at school and apply in August submit your June results). **No grade 12 March results.**
- **Declaration by your parent / legal guardian / surety form** (downloaded from the university website),
- A certified copy of your **parent / legal guardian / surety's identity document.**
- Completed **disability assessments form** (if applicable).
- Full **official academic record(s) and certificate(s) of conduct** from previous higher education institution(s) (if applicable).
- Copy of your current **residential / home or postal address.**

NB: Please note that your **student number/identity number** must clearly be indicated on all documentation submitted. Your application form cannot be processed if you do not include all supporting documentation with your application.



Extended Curriculum Programmes

The transition from school to university is challenging for most young people. It is, however, even more dramatic for learners who for various reasons, find that they do not meet the minimum admission requirements of the programme of their choice. Nelson Mandela University offers a wide range of extended curriculum programmes that provide such students with the opportunity to enroll for an extended programme in order to obtain the same mainstream qualification at the end of their study career. In practice, it implies that a student will complete a three-year degree or diploma programme in four years. These programmes provide an environment in which academic support and skills development are integrated with regular academic work. Additional support courses and activities in the first two years of the extended programme assist students to adapt to the university's learning environment in order to follow the mainstream courses during the last two years of study. International/Foreign/NCV level 4 & senior certificate equivalency conversion table.



International/Foreign/NCV level 4 & senior certificate equivalency conversion table

- South African and International applicants with International, NC(V) level 4 or Foreign School-Leaving certificates, should use the table below to calculate an equivalent Applicant Score (AS) for admission, based on percentages obtained in such certificates.
- Applicants with international or foreign qualifications must also satisfy the requirements laid down by the Matriculation Board to qualify for a certificate of exemption for a particular international or foreign school-leaving qualification. Applications for such certificates must be made to the Matriculation board directly: <https://mb.usaf.ac.za/>
- Applicants will have to comply with the minimum Applicant Score (AS) set for the UG qualification they wish to apply for, as well as meet any other additional subject requirements directly.
- To calculate your Applicant Score (AS) use the symbols/achievement rating/percentages obtained in your school-leaving examinations in order to convert them to an equivalent achievement standard on the National Senior Certificate (NSC).
- Your AS is calculated using six subjects, which must include the language(s) and subjects required for admission but excluding LO

Subject % to use when calculating the Applicant Score*	Senior Cert HG	Senior Cert SG	HIGCSE NSSC HL	IGCSE NSSC OL	O-LEVEL	AS	A-LEVEL	IB HL	IB SL	KCSE	NC(V)4** Fundamental	NC(V)4 Vocational
115							A*, A	7			Use your actual percentage(s) obtained on your statement of results / certificate.	
105							B	6				
95	A		1			A	C	5	7	A+,A		
85	B		2			B	D	4	6	A-		
75	C	A	3	A	A	C	E	3	5	B+		5 (90-100%)
65	D	B		B	B	D		2	4	B, B-		5 (80-89%)
55	E	C	4***	C	C	E		1	3	C+		4 (70-79%)
45	F	D		D	D				2	D		3 (50-69%)
35	FF	E		E	E				1	E		2 (40-49%)
25	G, GG, H	F, FF, G, GG, H		F, G						F, G		1 (0-39%)

* It is recommended that the midpoint of the NSC percentage range be used when calculating the AS, as the results of the above qualifications (excluding the NCV Fundamentals) are reported as either a symbol or numeric value. The range of Subject % exceeds the 100% mark to allow for inclusion of the A Level and IB HL as both qualifications are considered to be at a higher level than the NSC.

** As the Fundamental subjects are considered to be at the same level as the NSC, use the actual percentage obtained for Language and Mathematics/Mathematical Literacy. For the four Vocational Subjects use the values in the relevant column of the table above.

*** A symbol 4 obtained for a NSSC Higher Level / HIGCSE subject is regarded as a pass mark in the equivalent Ordinary or IGCSE level subject except for a First Language subject which becomes a 2nd language pass if another language is also passed (From: <https://mb.usaf.ac.za/paragraph-15/>).

Key:

NSC - National Senior Certificate

O-Level - Ordinary level

Senior Cert HG - Senior Certificate Higher Grade

AS - Advanced Subsidiary

Senior Cert SG - Senior Certificate Standard Grade

A-Level - Advanced level

HIGCSE - Higher International Graduate Certificate of Secondary Education

IB HL - International Baccalaureate Schools (Higher Levels)

IGCSE - International Graduate Certificate of Secondary Education

IB SL - International Baccalaureate Schools (Standard Levels)

NSSC HL - Namibian Senior Secondary Certificate Higher Levels

KCSE - Kenyan Certificate of Secondary Education

NSSC OL - Namibian Senior Secondary Certificate Ordinary Levels

NC(V) 4 - National Certificate Vocational Level 4



Financial facts

- Before registering as a student, you need to determine whether you will have sufficient funds to finance your studies. Costs involved in higher education include enrolment fees, registration and tuition fees, textbooks, stationery, transport, meals, accommodation, materials and laboratory fees, sports equipment, and general living expenses.
- Nelson Mandela University offers financial assistance to full-time students in the form of bursaries, merit awards, and scholarships, for top academic achievers.
- A number of sport grants are also available for top sports performers and those who show outstanding potential.
- Admission to the university does not imply that you will be eligible for a merit award, scholarship, or bursary.
- Applications for NSFAS funding must be made directly on the NSFAS website.
- For more information on financial assistance, contact the **Financial Aid Office** on (041) 504 1111, or visit their webpage www.mandela.ac.za/finaid

Scholar Merit awards

- Scholar Merit Awards are awarded to new first-year undergraduate students who have achieved excellent academic results in their final grade 12 NSC/IEB examinations. Students must have passed Grade 12 not more than 2 years prior to their first year of study. If you passed Gr 12 the year adjacent to your first year of study, then a Previous Activity Form should be completed and submitted to Financial Aid office, North Campus before 31 March. Your registration at this University must also be your first-time registering at a Higher Education institution. The rand value of this award is determined on a sliding scale between a predetermined minimum and maximum value and is awarded to first-year students who qualify by the Financial Aid Office.

Your Applicant Score (AS) is calculated as follows:

- For applicants with seven or more Grade 12 subjects, your AS is calculated by adding the percentages for your six best subjects. This gives a score out of 600. Life Orientation (LO) is not included in your AS calculations for applicants from quintiles 4 and 5 schools.
- For those applicants from quintile 1, 2 or 3 school* who attain 50% or higher for Life Orientation, 7 points may be added to your score out of 600 to arrive at your final AS.

The rand value of each award is determined on a sliding scale of AS scores according to the table below.

Applicant Score (AS)	Amount
Band 1: 500 and above	R 16 500*
Band 2: 470 – 499	R 12 500*
Band 3: 410 – 469	R 8 500*

Disclaimer: "The university reserves the right to amend the award values and policy with regards to the bursary and may in its sole discretion; decide to implement such amendments retrospectively". T's & C's apply.

For more information contact the **Financial Aid Office** on **041 504 1111**

School Leadership awards

School Leadership Awards are granted to head prefects (Head Boy/Head Girl), or Learner Representative Council President (in cases of no Head Prefects) and who meet the criteria for a Scholar Merit Bursary, qualifies for the School Leadership award of R4200 in addition to the Scholar Merit Bursary. Documentary proof of your Grade 12 results, including a letter from your school verifying your leadership role must be submitted to the Financial Aid office on North Campus as soon as possible. The last day for submission of these documents is 31 March annually. Students who were Head Prefects (or Learner Council Presidents) but do not qualify for a Scholar Merit Bursary, nevertheless, qualifies for a School Leadership Award of R4200.

Disclaimer: "The university reserves the right to amend the award value and policy with regards to the bursary and may in its sole discretion; decide to implement such amendments retrospectively".
Student merit bursaries

Student merit bursaries

Returning undergraduate students may qualify for merit bursaries based on their final results in the previous year of study. Students must have passed all their modules at the first attempt. The rand value of which is determined on a sliding scale. These bursaries are available to South African as well as international students. Students must have also achieved a Weighted Average Academic Performance which is determined per faculty, and registered for a minimum relative course weight of at least 0.80 (or 96 credits)

Faculty of Business and Economic Science – 75%

Faculty of EBET – 70%

Faculty of Education – 75%

Faculty of Health Sciences – 70%

Faculty of Humanities – 75%

Faculty of Law – 70%

Faculty of Science – 70%

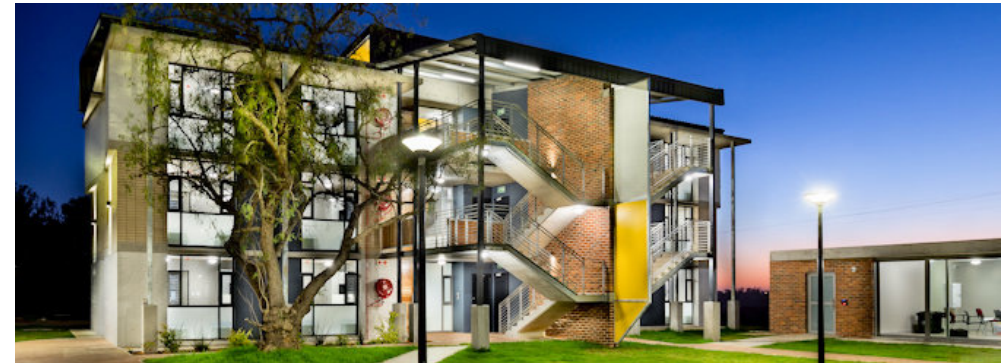
NB: Exempted courses are not included in the minimum relative weight or credit value for merit award purposes. The value of the bursary is not a fixed amount and is determined in accordance with the available budget. These awards are only for undergraduate studies. Students intending to register for Postgraduate Diplomas or Honours studies must apply for those bursaries on the prescribed form before 1 November of the year preceding postgraduate studies.

Disclaimer: "The university reserves the right to amend the award values and policy with regards to the bursary and may in its sole discretion; decide to implement such amendments retrospectively". T's & C's apply.

Sport bursaries

Madibaz Sport offers sport bursaries of varying amounts to sport performers who have demonstrated the ability to play sport at a high level of competition. Bursary application forms can be obtained from Madibaz Sport by e-mail: madibazsport@mandela.ac.za or by calling (041) 504 2165.

Disclaimer: "The university reserves the right to amend the award values and policy with regards to the bursary and may in its sole discretion; decide to implement such amendments retrospectively".



Accommodation

On-campus

The university provides various on-campus accommodation options. These include the residences on the university's Summerstrand and George campuses, and the Student Villages in Summerstrand, which consist of self-catering units for senior students. As accommodation is limited, early application is essential. Prospective students should note that being offered a place in an academic programme does not mean they have also been accepted into an on-campus residence. The closing date for residence applications is: **30 September 2026**. No late applications will be considered.

For more information contact: (041) 504 3690/1415/1416 | resadmissions@mandela.ac.za | www.mandela.ac.za/studenthousing

Off-campus

Some students prefer living off-campus. Off-campus accommodation options include renting flats and houses or boarding at nearby private residences. The university offers a service to assist students in finding suitable off-campus accommodation. For more information on off-campus accommodation please contact **(041) 504 2921** or e-mail: offcampus.accomodation@mandela.ac.za

Applying for residence accommodation

- Apply online (<http://studenthousing.mandela.ac.za/Apply-for-admission>);
- Please note that indicating that you require accommodation does not guarantee placement in any of the university's on-campus accommodation options.
- A selection process has to take place and priority will be given to applicants who have obtained excellent academic results.
- No student will be admitted to residence until she/he has been academically admitted to a university programme, or before the appropriate fees have been paid.
- Also note that residence accommodation is limited, and preference will be given to applications received before the end of September.
- Please submit a residence accommodation form together with proof of your current residential/home or postal address via e-mail (resadmissions@mandela.ac.za), fax (041- 504 9765) or post (Residence Accommodation, PO Box 77000, Nelson Mandela University, Gqeberha, 6031).

International students

Nelson Mandela University's International Office (MIO) provides information and assistance to prospective and current international students. The institution is home to more than 791 international students from over 46 countries around the world. Most international students are from the African continent. Information on study programmes, fees, accommodation, and study permit requirements can be obtained from this office. Please contact them on +27 (0)41 504 2161 or e-mail: international@mandela.ac.za or visit their website (www.mandela.ac.za/international). **The closing date for applications by international students is 30 September 2026.**

Study Abroad

The International Office also provides study abroad opportunities to South African second- to final year students registered at Nelson Mandela University. Opportunities are provided to students to enroll for one semester abroad at a partner university. For more information contact international@mandela.ac.za or visit the Office for International Education.



Students with Disabilities

Nelson Mandela University offers concessions to students with permanent, and/or temporary disabilities, and/or disorders who may not be able to reflect their true ability under standard formal assessment (test and examinations) conditions. It is the aim of the university to assist students to reach their full academic potential. This is done by providing assistance and/or concessions which ensures equitable, reasonable, and appropriate access to higher education. All of which are based on the national standards applicable to tertiary education in South Africa, whilst not prejudicing deserving students, their peers, and/or any academic programme.

For more information on accessibility and how your particular disability may be accommodated, you are advised to contact **the Universal Accessibility & Disability Services (UADS)**, on 041-504 2313, or e-mail: disability@mandela.ac.za as early as possible. Early enquiries during the year preceding application are encouraged, so that requests may be considered prior to admission. 2313 or E-mail: disability@mandela.ac.za for further information.



Co-Curricular Record

While in university, it is important to not only achieve your goals related to your academics, but also to develop yourself in ways that will help you be a potential employee that employers want to hire. You are encouraged to develop yourself in 16 key areas believed to be attractive traits to employers, both locally and globally. Whether it be through campus leadership positions like First Year Success Buddies, BtC and Res Mentors or involvement in experiences like societies or community involvement sites, co-curricular activities provide opportunities in which you can develop these key skills. Additionally, you can receive formal recognition for the learning achieved through these out-of-the classroom activities with the Co-Curricular Record (CCR). The CCR serves as a companion to your Academic Record and formally acknowledges your participation in approved cocurricular activities, including the learning outcomes achieved through participation. It is never too early to start developing yourself for your future career.

The University Shop

The University Shop is a project of the Alumni Association and was established as a brand development tool. By wearing Nelson Mandela University branded items, students, staff, alumni, and friends can show their affinity and support for the University. You can visit the one-stop shop for all University branded clothing, bags, folders, and stationery in person, or shop online. **For more information contact:** 041 – 504 4371, or E-mail: shop@mandela.ac.za, or visit their website: <https://onlineshop.mandela.ac.za/>



Language of Teaching and Learning

While Nelson Mandela University is committed to multilingualism, the predominant language of teaching and learning at the University is English. The statutory language requirements can be met by obtaining a minimum rating of 3 (40 - 49%) or higher in English, Afrikaans or isiXhosa as a home or first additional language. Some qualifications may require a higher pass mark for language(s) than what is indicated here. Please refer to the subject requirements of the qualification you intend applying for, before completing your online application form to ensure that you meet the direct admission & subject requirements.

Virtual Tours

Explore Nelson Mandela University from anywhere around the world with our immersive virtual tours! Whether you're planning a visit, researching our facilities, or simply curious to see what we offer, our virtual tours provide a convenient and engaging way to experience studying at our institution. Navigate through different areas, zoom in on details, and explore campus life, all at your own pace. **For more information:** <https://www.mandela.ac.za/About-us/Virtual-tours>



Faculty of Humanities



SCHOOL OF VISUAL AND PERFORMING ARTS

Visual Arts

Qualification	Programme Overview	Delivery mode & duration of study	Minimum Admission Requirements				Career Opportunities
			AS for Maths	AS for Technical Maths	AS for Maths Literacy	Subject Requirements	
Bachelor of Visual Art (BVA)							
Bachelor of Visual Art (BVA)	<p>The Bachelor of Visual Arts begins with a generic first year of study. On successful completion of this year students apply for selection into either the Fine Art or the Design stream.</p> <p>The first-year programme provides a broad base of skills and competencies that includes visual literacy, creative problem solving, design skills, sound drafting skills, some technical and technological proficiency; the ability to work in an extended range of media, both traditional and non- traditional, and appropriate experience at developing concepts and realising these in both two- and three-dimensional form; the ability to function as part of a team and the ability to articulate concepts both visually and verbally.</p> <p>The Design streams include:</p> <ul style="list-style-type: none"> • Fashion and Textiles • Graphic Design • Photography <p>The Fine Art streams include:</p> <ul style="list-style-type: none"> • Drawing • Ceramics • Painting • Printmaking • Sculpture 	Full-time 1 year plus Full-time 2 years	350	365	365	<ul style="list-style-type: none"> • Minimum statutory NSC requirements for degree entry must be met. • Qualifying applicants will be required to prepare a prescribed portfolio, and attend an interview. Numbers are limited for this programme. The portfolio is the leading indicator. • Admission is subject to departmental selection. <p>RECOMMENDED NSC/IEB SUBJECTS:</p> <ul style="list-style-type: none"> • Visual Arts • Design <p><i>Neither of these two subjects are prerequisites for admission.</i></p>	See the relevant discipline fields below.

Qualification	Programme Overview	Delivery mode & duration of study	Minimum Admission Requirements				Career Opportunities
			AS for Maths	AS for Technical Maths	AS for Maths Literacy	Subject Requirements	
Design stream							
BVA (Fashion and Textiles)	<p>Enabling students to function within the wide parameters of the world of fashion, equipping them with the ability to adapt to the fast-changing needs of the clothing and fashion industry, and providing a range of textile knowledge are the objectives of this programme. It allows the student flexibility to respond readily to the fashion or textile influences. Individual design and product development constitutes a major part of the studies, with personal style being strongly encouraged throughout the course.</p> <p>The programme allows the student to explore interest areas of a specialised nature including formal design and merchandising as it relates to the fashion, interiors and textile industry or technological innovation with regards to hi-tech fibres, knitting and weaving systems.</p>	Full-time 2 years	–	–	–	<p>Only after successfully completing the generic first-year programme are students considered for placement in the second year of the degree programme.</p> <p>The student must attend an interview and submit an interview portfolio of relevant first-year work appropriate to their proposed area of specialisation. Admission to the student's desired area of specialisation is not guaranteed and so it is recommended that students interview for more than one area of specialisation.</p>	<p>Clothing designer (for haute couture, ready- to-wear or mass market), pattern maker, theatre designer, fashion illustrator, fashion marketer or entrepreneur (involved in buying, merchandising, co-ordination and styling for magazines, newspapers and fashion industrial publications). Textile designer in the formal and informal industry, stylist, co-ordinator of textiles, crafter or entrepreneur, consultant, trend forecaster, researcher or teacher.</p>
BVA (Graphic Design)	<p>This programme enables students to develop creative approaches to solving graphic communication problems. The programme also provides students with comprehensive training that will equip them to establish their own business and to find productive employment as designers in advertising, publishing, packaging, and related fields within commerce and industry.</p>	Full-time 2 years	–	–	–	<p>Only after successfully completing the generic first-year programme are students considered for placement in the second year of the degree programme.</p> <p>The student must attend an interview and submit an interview portfolio of relevant first-year work appropriate to their proposed area of specialisation. Admission to the student's desired area of specialisation is not guaranteed and so it is recommended that students interview for more than one area of specialisation.</p>	<p>Graphic designers may find employment with advertising agencies, design studios, repro companies, TV stations, signage companies, web developers, packaging, illustration and animation houses. They may go into partnership with an experienced designer, work freelance or establish an independent business.</p>

1. Applicant Score (AS) for Mathematics: Overall score calculated for applicants who have taken Mathematics;
2. Applicant Score (AS) for Technical Mathematics: Overall score calculated for applicants who have taken Technical Mathematics;
3. Applicant Score (AS) for Mathematical Literacy: Overall score calculated for applicants who have taken Mathematical Literacy.

Qualification	Programme Overview	Delivery mode & duration of study	Minimum Admission Requirements				Career Opportunities
			AS for Maths	AS for Technical Maths	AS for Maths Literacy	Subject Requirements	
BVA (Photography)	This programme equips students with a comprehensive knowledge of photographic or imaging processes, materials and apparatus, through hands-on experience in the field, studio or on professional assignment.	Full-time 2 years	–	–	–	<p>Only after successfully completing the generic first-year programme are students considered for placement in the second year of the degree programme.</p> <p>The student must attend an interview and submit an interview portfolio of relevant first-year work appropriate to their proposed area of specialisation. Admission to the student's desired area of specialisation is not guaranteed and so it is recommended that students interview for more than one area of specialisation.</p>	Careers in commercial, fashion or advertising photography; photo finishing industries, publishing and journalism, film and video production, digital imaging technology or freelancing.
Fine Art stream							
BVA (Fine Art)	<p>This programme offers training in the following disciplines:</p> <ul style="list-style-type: none"> • Sculpture • Painting • Printmaking • Drawing (visualisation techniques) • Ceramics <p>The student may select two of these specialisations. Together with drawing, professional practice and art theory the accent is on research, creative practice problem solving and process skills essential for contemporary art production.</p> <p>Training in small business management, basic marketing skills, personal and professional time management, as well as communication skills is an integral aspect of the programme.</p>	Full-time 2 years	–	–	–	<p>Only after successfully completing the generic first-year programme are students considered for placement in the second year of the degree programme.</p> <p>The student must attend an interview and submit an interview portfolio of relevant first-year work appropriate to their proposed area of specialisation. Admission to the student's desired area of specialisation is not guaranteed and so it is recommended that students interview for more than one area of specialisation.</p>	Professional artist, animator, entrepreneur, designer, illustrator, model-maker in the theatre, television and film industry, marketing and sales representative in the arts sector, curator, conservation and display expert in the museum and gallery sector, craftsperson, teacher and lecturer.

MUSIC & PERFORMING ARTS

Qualification	Programme Overview	Delivery mode & duration of study	Minimum Admission Requirements				Career Opportunities
			AS for Maths	AS for Technical Maths	AS for Maths Literacy	Subject Requirements	
Diploma in Music (DipMus)							
Diploma in Music (Curriculum 1)	This programme is focused on the adult beginner. Bridging courses in practical music, music theory and English language skills are offered. Specialisation is offered in either western art music or jazz. Successful students also can articulate to the BMus programme, provided admission requirements for practical music studies have been met. In so doing a maximum of 240 credits attained in the diploma may be retained towards the BMus degree.	Full-time 3 years	290	305	305	<ul style="list-style-type: none"> • Minimum statutory NSC requirements for diploma entry must be met. • No prior formal music training is required for theoretical subjects or instrumental studies. • Admission is subject to departmental selection based on an audition in the candidate's chosen First Instrument, during which vocal or instrumental musical ability must be successfully demonstrated. 	Careers in private music teaching, music technology and choral conducting.
Diploma in Music (Curriculum 2)	<p>This programme is designed for students who do have prior learning in music, but who do not qualify for entry to degree studies, or who, in the opinion of the head of department, do not yet meet the practical and theoretical entrance requirements for the BMus degree. However, on completion of this diploma they may vertically articulate to the BMus, retaining a maximum of 240 credits already attained in the DipMus.</p> <p>It comprises compulsory modules in main instrument, music theory, aural development, music history, and music teaching methodologies, in addition to which it offers a wide variety of elective modules, including a second instrument, choral music studies, orchestration, music technology, and many more.</p>	Full-time 3 years	290	305	305	<ul style="list-style-type: none"> • Minimum statutory NSC requirements for diploma entry must be met. • Admission is subject to an audition in the candidate's chosen First Instrument, during which vocal or instrumental musical performance ability must be successfully demonstrated. • A minimum standard of musical performance equivalent to grade 2 of the external examining bodies for music (Unisa, ABRSM, Trinity Guildhall) is required for admission to First Instrument: Intermediate (MFPV131), and a minimum standard of musical performance equivalent to grade 6 of the external examining bodies for music (Unisa, ABRSM, Trinity Guildhall) is required for admission to First Instrument: Advanced (MFPV101). 	Performer, composer, programme compiler, music journalist, arts administrator, music librarian or archivist, researcher

1. Applicant Score (AS) for Mathematics: Overall score calculated for applicants who have taken Mathematics;
 2. Applicant Score (AS) for Technical Mathematics: Overall score calculated for applicants who have taken Technical Mathematics;
 3. Applicant Score (AS) for Mathematical Literacy: Overall score calculated for applicants who have taken Mathematical Literacy.

Qualification	Programme Overview	Delivery mode & duration of study	Minimum Admission Requirements				Career Opportunities
			AS for Maths	AS for Technical Maths	AS for Maths Literacy	Subject Requirements	
Bachelor of Music (BMus)							
BMus (School Music)	<p>The overall purpose of the BMus programme is to produce professional musicians who have the requisite skills and knowledge to function effectively in the workplace, who possess the necessary critical thinking skills to be creative, innovative, and adaptable in changing circumstances, and who can apply these in selected, specialised contexts.</p> <p>The purpose of the BMus (School Music) programme is to develop students' ability to critically engage with theories of music education and equip them to apply effective teaching and learning strategies in the music classroom.</p>	Full-time 4 years	350	365	365	<ul style="list-style-type: none"> • Minimum statutory NSC requirements for degree entry must be met. • A minimum practical music standard equivalent to Grade 6 of the external examining bodies for music is required for admission to the first module of First Instrument: Advanced. • A minimum standard in music theory equivalent to Grade 5 of the external examining bodies for music is required for admission to the first module of Music Theory, Analysis and Aural Development. • Admission is subject to an audition in the applicant's chosen First Instrument and to a music theory entrance test. 	Music teachers.
BMus (School Music) <i>Extended curriculum</i>	<p>This programme provides alternative university access to students who have the potential to succeed, but do not meet the minimum admission requirements for the mainstream programme.</p> <p>The purpose of the BMus (School Music) programme is to develop students' ability to critically engage with theories of music education and equip them to apply effective teaching and learning strategies in the music classroom.</p>	Full-time 5 years	330	345	345	<ul style="list-style-type: none"> • Minimum statutory NSC requirements for degree entry must be met. • Admission is subject to departmental selection. 	Music teachers

Qualification	Programme Overview	Delivery mode & duration of study	Minimum Admission Requirements				Career Opportunities
			AS for Maths	AS for Technical Maths	AS for Maths Literacy	Subject Requirements	
BMus (Performing Arts)	<p>The overall purpose of the BMus programme is to produce professional musicians who have the requisite skills and knowledge to function effectively in the workplace, who possess the necessary critical thinking skills to be creative, innovative, and adaptable in changing circumstances, and who can apply these in selected, specialised contexts.</p> <p>The purpose of the BMus (Performing Arts) programme is to equip students with the ability to work as performing artists in a creative environment, and to develop the ability to critically engage with relevant conventions of performance practice.</p>	Full-time 4 years	350	365	365	<ul style="list-style-type: none"> Minimum statutory NSC requirements for degree entry must be met. A minimum practical music standard equivalent to Grade 6 of the external examining bodies for music is required for admission to the first module of First Instrument: Advanced. A minimum standard in music theory equivalent to Grade 5 of the external examining bodies for music is required for admission to the first module of Music Theory, Analysis and Aural Development. Admission is subject to an audition in the applicant's chosen First Instrument and to a music theory entrance test. 	Performing musicians (solo or ensemble).
BMus (Performing Arts) <i>Extended curriculum</i>	<p>This programme provides alternative university access to students who have the potential to succeed, but do not meet the minimum admission requirements for the mainstream programme.</p> <p>The purpose of the BMus (Performing Arts) programme is to equip students with the ability to work as performing artists in a creative environment, and to develop the ability to critically engage with relevant conventions of performance practice.</p>	Full-time 5 years	330	345	345	<ul style="list-style-type: none"> Minimum statutory NSC requirements for degree entry must be met. Admission is subject to departmental selection. 	Performing musicians (solo or ensemble).

1. Applicant Score (AS) for Mathematics: Overall score calculated for applicants who have taken Mathematics;
2. Applicant Score (AS) for Technical Mathematics: Overall score calculated for applicants who have taken Technical Mathematics;
3. Applicant Score (AS) for Mathematical Literacy: Overall score calculated for applicants who have taken Mathematical Literacy.

Qualification	Programme Overview	Delivery mode & duration of study	Minimum Admission Requirements				Career Opportunities
			AS for Maths	AS for Technical Maths	AS for Maths Literacy	Subject Requirements	
BMus (Music Technology)	<p>The overall purpose of the BMus programme is to produce professional musicians who have the requisite skills and knowledge to function effectively in the workplace, who possess the necessary critical thinking skills to be creative, innovative, and adaptable in changing circumstances, and who can apply these in selected, specialised contexts.</p> <p>The purpose of the BMus (Music Technology) is to broadly engage the intersection of Art and Science in Music, and specifically to equip learners to effectively exploit the tools of digital audio, including the modern digital recording studio, in support of their music production, performance, research and pedagogy.</p>	Full-time 4 years	350	365	365	<ul style="list-style-type: none"> • Minimum statutory NSC requirements for degree entry must be met. • A minimum practical music standard equivalent to Grade 6 of the external examining bodies for music is required for admission to the first module of First Instrument: Advanced. • A minimum standard in music theory equivalent to Grade 5 of the external examining bodies for music is required for admission to the first module of Music Theory, Analysis and Aural Development. • Admission is subject to an audition in the applicant's chosen First Instrument and to a music theory entrance test. 	Music technologist, producer, arranger, composer, electro-acoustic musician, sound engineer, independent record label owner, acoustics and sound installation consultant, technology-enabled music teacher.
BMus (Music Technology) <i>Extended curriculum</i>	<p>This programme provides alternative university access to students who have the potential to succeed, but do not meet the minimum admission requirements for the mainstream programme.</p> <p>The purpose of the BMus (Music Technology) is to broadly engage the intersection of Art and Science in Music, and specifically to equip learners to effectively exploit the tools of digital audio, including the modern digital recording studio, in support of their music production, performance, research and pedagogy.</p>	Full-time 5 years	330	345	345	<ul style="list-style-type: none"> • Minimum statutory NSC requirements for degree entry must be met. • Admission is subject to departmental selection. 	Music technologist, producer, arranger, composer, electro-acoustic musician, sound engineer, independent record label owner, acoustics and sound installation consultant, technology-enabled music teacher.
BMus (General)	<p>The overall purpose of the BMus programme is to produce professional musicians who have the requisite skills and knowledge to function effectively in the workplace, who possess the necessary critical thinking skills to be creative, innovative, and adaptable in changing circumstances, and who can apply these in selected, specialised contexts.</p>	Full-time 4 years	350	365	365	<ul style="list-style-type: none"> • Minimum statutory NSC requirements for degree entry must be met. • A minimum practical music standard equivalent to Grade 6 of the external examining bodies for music is required for admission to the first module of First Instrument: Advanced. 	This curriculum is ideally suited to the versatile musician rather than to the musician who wishes to specialise in one particular area of music.

Qualification	Programme Overview	Delivery mode & duration of study	Minimum Admission Requirements				Career Opportunities
			AS for Maths	AS for Technical Maths	AS for Maths Literacy	Subject Requirements	
BMus (General) <i>(continued)</i>	The purpose of the BMus (General) is to provide students the opportunity to cover a diverse range of musical skills and knowledge literacies, rather than to present a focused specialisation on any one of these. It also allows for the selection of non-music elective courses that foster exposure to a general humanity education in order to encourage vertical articulation to postgraduate work wherein music engages in interdisciplinary discursive contexts.					<ul style="list-style-type: none"> A minimum standard in music theory equivalent to Grade 5 of the external examining bodies for music is required for admission to the first module of Music Theory, Analysis and Aural Development. Admission is subject to an audition in the applicant's chosen First Instrument and to a music theory entrance test. 	
BMus (General) <i>Extended curriculum</i>	<p>This programme provides alternative university access to students who have the potential to succeed, but do not meet the minimum admission requirements for the mainstream programme.</p> <p>The purpose of the BMus (General) is to provide students the opportunity to cover a diverse range of musical skills and knowledge literacies, rather than to present a focused specialisation on any one of these. It also allows for the selection of non-music elective courses that foster exposure to a general humanity education in order to encourage vertical articulation to postgraduate work wherein music engages in interdisciplinary discursive contexts.</p>	Full-time 5 years	330	345	345	<ul style="list-style-type: none"> Minimum statutory NSC requirements for degree entry must be met. Admission is subject to departmental selection. 	This curriculum is ideally suited to the versatile musician rather than to the musician who wishes to specialise in one particular area of music.

1. Applicant Score (AS) for Mathematics: Overall score calculated for applicants who have taken Mathematics;
2. Applicant Score (AS) for Technical Mathematics: Overall score calculated for applicants who have taken Technical Mathematics;
3. Applicant Score (AS) for Mathematical Literacy: Overall score calculated for applicants who have taken Mathematical Literacy.

SCHOOL OF LANGUAGE, MEDIA AND COMMUNICATION

Qualification	Programme Overview	Delivery mode & duration of study	Minimum Admission Requirements				Subject Requirements	Career Opportunities
			AS for Maths	AS for Technical Maths	AS for Maths Literacy			
Diploma (Dip)								
Dip (Public Relations Management)	<p>The programme is designed to equip candidates with the knowledge and skills needed to operate as professional public relations practitioners. The programme has been accredited with the Public Relations Institute of South Africa (PRISA).</p> <p>The programme also requires the student to undergo one year of experiential training in order to qualify for the diploma.</p>	Full-time 3 years (including 1 year in-service training)	330	345	345	<ul style="list-style-type: none"> • Minimum statutory NSC requirements for diploma entry must be met. • Mathematics – 30%, or 50% for Technical Mathematics, or Mathematical Literacy – 50%. • Applicants may also be provisionally admitted based on work experience, age and maturity. Admission is at the discretion of the Head of Department. 	Public relations practitioners will be able to perform a variety of tasks and functions, such as writing press releases, organising special events, liaising with the media, implementing internal and external communication programmes, lobbying, and conducting opinion research surveys. The list is endless, and will depend upon the kind of company or institution for which the practitioner chooses to work.	
Advanced Diploma (AdvDip)								
AdvDip (Public Relations Management)	<p>The Advanced Diploma in Public Relations Management aims to fulfil the fundamental requirements of a practically-orientated PR programme. The qualification consists of six compulsory and interrelated modules. All modules contribute in an integrated fashion towards the intended outcomes. During the first semester, students will create and present a public relations strategy and plan to an industry problem; apply managerial principles to find a solution to an industry problem; and construct a digital media strategy based on tool functionality to solve such problems.</p>	Full-time 1 year	–	–	–	<p>Dip (Public Relations Management), or an equivalent qualification, with a final mark of at least 60% for the Diploma is required. Applicants who wish to be admitted based on Recognition of Prior Learning (RPL), may be given recognition in terms of the University's RPL policy.</p>	<p>Mid-level management positions in corporate and/or consultancy settings. Candidates should then, through work experience, be able to further him/herself in the corporate/consulting environment, to senior management status.</p> <p>Career opportunities include, but are not limited to: Public Relations Officer, Communications Officer, Corporate Communication Officer, Media Liaison, Brand Consultant.</p>	

Qualification	Programme Overview	Delivery mode & duration of study	Minimum Admission Requirements				Career Opportunities
			AS for Maths	AS for Technical Maths	AS for Maths Literacy	Subject Requirements	
AdvDip (Public Relations Management) <i>(continued)</i>	<p>During the second semester, students will present a critical analysis of the cultural and developmental communication practices of an organisation; create and present a measurement and evaluation plan for the proposed business; and design and present a business plan, complete with operational goals and objectives.</p> <p>Graduates will therefore be able to plan and develop communication campaigns on behalf of organisations, or alternatively act as specialised counsel in a consulting capacity.</p>						
Bachelor of Arts (BA)							
BA	<p>The programme is highly flexible and students can choose one of three possible streams:</p> <ul style="list-style-type: none"> • Two languages as majors; • One language and one social sciences & humanities as majors; or • Two social sciences & humanities as majors. <p>Students can choose two of the following disciplines:</p> <ul style="list-style-type: none"> • Anthropology • Afrikaans • Business Management • Economics • English • English language studies • History • French • Geography • Industrial Psychology • isiXhosa • Philosophy • Political Studies • Psychology • Public Administration • Sociology 	Full-time 3 years	350	365	365	<ul style="list-style-type: none"> • Minimum statutory NSC requirements for degree entry must be met. • 60% pass in any NSC (Home or first additional language). • Mathematics – 35%, or 55% for Technical Mathematics, or Mathematical Literacy – 55%. 	The Bachelor of Arts (BA) programme allows students to choose their subjects and tailor their studies to their interests, aptitudes and career plans. Students who major in teaching subjects can follow their BA degree with a one-year postgraduate certificate in education in order to qualify to teach at high school level.

1. Applicant Score (AS) for Mathematics: Overall score calculated for applicants who have taken Mathematics;
2. Applicant Score (AS) for Technical Mathematics: Overall score calculated for applicants who have taken Technical Mathematics;
3. Applicant Score (AS) for Mathematical Literacy: Overall score calculated for applicants who have taken Mathematical Literacy.

Qualification	Programme Overview	Delivery mode & duration of study	Minimum Admission Requirements				Career Opportunities
			AS for Maths	AS for Technical Maths	AS for Maths Literacy	Subject Requirements	
BA <i>(continued)</i>	Any other discipline may be taken as a core module, in consultation with the department and programme leader involved. The BA degree enables students to develop communication, critical thinking and problem-solving skills that will make them flexible global players. The BA also opens a wide variety of postgraduate study opportunities, allowing students to focus on a particular area and develop specialist expertise.						
BA (Media, Communication & Culture)	<p>The BA degree in Media, Communication and Culture (BA MCC) equips students with a blend of practical skills and theoretical knowledge, preparing them to work, lead, and make a difference in the fields of media, digital communication, design, and culture.</p> <p>Students are equipped to read, study, measure, plan, create, write, and produce content for film, television, and other forms of mass media communications, and to engage in marketing across various platforms. Students can also acquire advanced language skills, business knowledge, and conceptual/strategic tools for critically understanding and producing cultural material.</p> <p>The programme covers a wide range of subjects, including film studies, scriptwriting, visual communication, copywriting, animation, advertising, cultural studies, philosophy, and digital communications. Students can also choose elective modules in languages such as Afrikaans, English, isiXhosa, and French, as well as in Business Management and Entrepreneurship.</p>	Full-time 3 years	350	365	365	<ul style="list-style-type: none"> • Minimum statutory NSC requirements for degree entry must be met. • 60% pass in any NSC (Home or 1st Additional language). • Mathematics – 35%, or 55% for Technical Mathematics, or Mathematical Literacy – 55%. 	<p>Graduates with a BA in Media, Communication and Culture (BA MCC) degree will be well-prepared for a variety of careers, including:</p> <ul style="list-style-type: none"> • Copywriters for the advertising and marketing sector. • Video producers and editors for film, television, or social media. • Journalists and digital content creators in online and traditional media. • Strategic communications professionals for NGOs, or in corporate or government sectors. • Visual communication designers for advertising, marketing, and branding firms. • Social media managers and influencers in the service, entertainment, or brand advocacy industries. • Media researchers or planners for market research firms or academic institutions. • Freelance media and communication professionals or entrepreneurs.

SCHOOL OF GOVERNMENTAL AND SOCIAL SCIENCES

Qualification	Programme Overview	Delivery mode & duration of study	Minimum Admission Requirements				Career Opportunities
			AS for Maths	AS for Technical Maths	AS for Maths Literacy	Subject Requirements	
Diploma (Dip)							
Dip (Public Management)	The programme trains students for a career in the public sector. The programme is designed in such a way that the student is equipped with administrative and management skills which are relevant for a career in the private and public sectors.	Full-time 3 years	310	325	325	<ul style="list-style-type: none"> Minimum statutory NSC requirements for diploma entry must be met. Mathematics – 35%, or 55% for Technical Mathematics, or Mathematical Literacy – 55%. 	Public managers can act as general, financial or personnel managers at central, provincial and local spheres of government, as well as in related public and parastatal institutions, including the private sector.
Dip (Public Management) Extended curriculum	<p>This programme provides alternative university access to students who have the potential to succeed, but do not meet the minimum admission requirements for the mainstream programme.</p> <p>The programme is designed in such a way that students are equipped with administrative and managerial skills which are relevant for a career in the private and public sectors.</p>	Full-time 4 years	290	305	305	<ul style="list-style-type: none"> Minimum statutory NSC requirements for diploma entry must be met. Mathematics – 30%, or 50% for Technical Mathematics, or Mathematical Literacy – 50%. 	See career opportunities above.
Advanced Diploma (AdvDip)							
AdvDip (Public Administration & Management)	The Advanced Diploma in Public Administration and Management aims to develop graduates who hold theoretical insights, operational skills well as critical insight into the socio-economic and socio-political realm which defines the public service.	Full-time 1 year	–	–	–	<ul style="list-style-type: none"> Diploma (Public Management) or equivalent qualification with an overall academic average of at least 60%, except if otherwise approved by the Head of Department and/or the Learning Programme Coordinator, in line with Faculty guidelines as approved by the Faculty Board. Candidates who have obtained an academic average between 55-60%, but who do have relevant work experience of at least two years', may be invited to an interview. 	Public managers can act as general, financial or personnel managers at central, provincial and local spheres of government, as well as in related public and parastatal institutions, including the private sector.

1. Applicant Score (AS) for Mathematics: Overall score calculated for applicants who have taken Mathematics;
 2. Applicant Score (AS) for Technical Mathematics: Overall score calculated for applicants who have taken Technical Mathematics;
 3. Applicant Score (AS) for Mathematical Literacy: Overall score calculated for applicants who have taken Mathematical Literacy.

Qualification	Programme Overview	Delivery mode & duration of study	Minimum Admission Requirements				Career Opportunities
			AS for Maths	AS for Technical Maths	AS for Maths Literacy	Subject Requirements	
Bachelor of Arts (BA)							
BA	<p>The School for Governmental & Social Sciences offers students the opportunity to tailor their BA studies to their interests and career plans, focusing on subjects such as Political Science, Public Administration, Sociology, Anthropology, and/or History.</p> <p>Students can choose one of three possible streams:</p> <ul style="list-style-type: none"> • Two languages as majors; • One language and one social sciences & humanities as majors; or • Two social sciences & humanities as majors. <p>The BA degree enables learners to develop communication, critical thinking and problem-solving skills that will make them flexible global players. The BA also opens up a wide variety of postgraduate study opportunities, allowing students to focus on a particular area and develop specialist expertise.</p> <p>The BA programme is highly flexible and students may also include other disciplines such as Psychology, Industrial Psychology, Philosophy, Geography or language studies.</p>	Full-time 3 years	350	365	365	<ul style="list-style-type: none"> • Minimum statutory NSC requirements for degree entry must be met. • 60% pass in any NSC (Home or first additional language). • Mathematics – 35%, or 55% for Technical Mathematics, or Mathematical Literacy – 55%. 	Anthropologist, historian, archivist, socio-cultural and culture-historical curator and consultant, cultural tourism, manager, teacher, trainer, negotiator/mediator, social and political analyst, researcher and academic.

Qualification	Programme Overview	Delivery mode & duration of study	Minimum Admission Requirements				Career Opportunities
			AS for Maths	AS for Technical Maths	AS for Maths Literacy	Subject Requirements	
BA (Politics & Economics)	<p>The BA Politics and Economics stream provides graduates with an intensive understanding of political issues and theories, economics, and economic policies, as well as highly developed critical thinking and problem-solving skills.</p> <p>In terms of knowledge acquisition, the course will immerse students deeply within concepts, conversations and realities directly related to (but not limited to): governance, democratisation, political philosophy and ideology, Global South studies, International Relations, conflict and peace studies, political economy, microeconomics, macroeconomics, economic history, and various philosophical discourses.</p>	Full-time 3 years	350	365	365	<ul style="list-style-type: none"> • Minimum statutory NSC requirements for degree entry must be met. • 60% pass in any NSC (Home or 1st Additional) language. • Mathematics – 40%, or 70% Technical Mathematics or Mathematical Literacy – 70%. 	Graduates will have the ability to work in many conceivable environments related to formal political, economic, or academic spheres. Career opportunities include government, various avenues of the private sector, research and academia, journalism, International Organisations (IOs), International non-Governmental Organisations (INGOs), or Non-Profit Organisations (NPOs) among other global companies or institutions.
Bachelor of Administration (BAdmin)							
BAdmin (Public Administration)	<p>The Bachelor of Administration (BAdmin) is a multi-faceted and comprehensive programme which aims to develop excellence in the practice and analysis of public administration, industrial psychology, sociology, business management, and political studies.</p> <p>Students may choose from one of four streams, according to their interests and planned career path. Public Administration is common to all four streams and learners choose an additional specialisation in Industrial Psychology, Sociology, Business Management or Political Studies.</p>	Full-time 3 years	350	365	365	<ul style="list-style-type: none"> • Minimum statutory NSC requirements for degree entry must be met. • Mathematics – 35%, or 55% for Technical Mathematics, or Mathematical Literacy – 55%. 	Depending on the area of specialisation, graduates will be equipped for careers in administrative and management divisions of the public and private sectors such as, facilitators, psychologists and human relations practitioners and in consultancy, entrepreneurship, non-government organisations and community-based organisations.

1. Applicant Score (AS) for Mathematics: Overall score calculated for applicants who have taken Mathematics;
2. Applicant Score (AS) for Technical Mathematics: Overall score calculated for applicants who have taken Technical Mathematics;
3. Applicant Score (AS) for Mathematical Literacy: Overall score calculated for applicants who have taken Mathematical Literacy.

Contact Details

	Gqeberha Campuses	George Campus
General Enquiries	041 504 1111	044 801 5111/5999
Student Access & Enrolment Office	041 504 1111/4993/4811/1504/1018	044 801 5194
Library and Information Services	041 504 2294/2298/3410/3851/1269	044 801 5151/5152
Financial Aid	041 504 1111/9971/9926/1242/3096	044 801 6136
Emthonjeni Student Wellness	041 504 2511/ 3222/ 3854 /1106	044 801 5047
Student Housing	041 1415/1416/3690 (On-Campus) 041 504 2921 (Off-campus)	044 801 5034/5136/5067 (On-campus) 044 801 5139 (Off-campus)
Student societies and clubs	041 504 3229/3351/3894/1235	044 801 5029
Madibaz Sport	041 504 2165	044 801 5037
Student Health Services	041 504 2174/1149/3762/1373	044 801 5062
Universal Accessibility & Disability Services (UADS)	041 504 2313	044 801 5041
Mandela International Office	041 504 2161	

Address of the University

PO Box 77000
Nelson Mandela University
GQEBERHA
6031

E info@mandela.ac.za

W mandela.ac.za



Address of the George Campus

Nelson Mandela University
George Campus
Private Bag X 6531
GEORGE
6530

E george-info@mandela.ac.za

W georgecampus.mandela.ac.za

Our Vision

To be a dynamic African university, recognised for its leadership in generating cutting-edge knowledge for a sustainable future.

Our Mission

To offer a diverse range of life-changing educational experiences for a better world.

To achieve our vision and mission, we will ensure that:

- Our values inform and define our institutional ethos and distinctive educational purpose and philosophy.
- We are committed to promoting equity of access and opportunities so as to give students the best chance of success in their pursuit of lifelong learning and diverse educational goals.
 - We provide a vibrant, stimulating and richly diverse environment that enables staff and students to reach their full potential.
 - We develop graduates and diplomates to be responsible global citizens capable of critical reasoning, innovation, and adaptability.
 - We create and sustain an environment that encourages and supports a vibrant research, scholarship and innovation culture.
- We engage in mutually beneficial partnerships locally, nationally and globally to enhance social, economic, and ecological sustainability.

Our Values



Disclaimer: All reasonable steps have been taken to ensure that the information contained in this guide was correct at the date of publication. All information listed is subject to change and may be updated without prior notification. Nelson Mandela University reserves the right to make changes to the programme details, rules, admission requirements, duration and delivery of courses as published in this guide. Prospective applicants are advised to consult the Student Access & Enrolment Office, the University website or relevant faculties prior to applying.



