

NELSON MANDELA UNIVERSITY



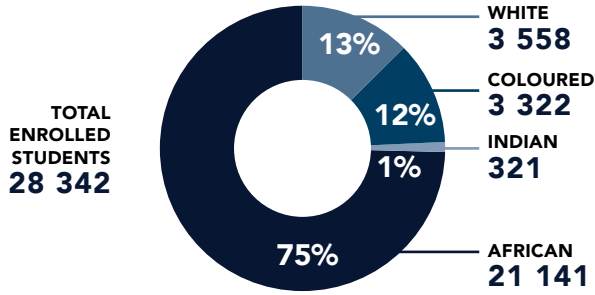
Q1
2020

Student access and enrolments at a glance: 2020

Produced by the Office for Institutional Strategy

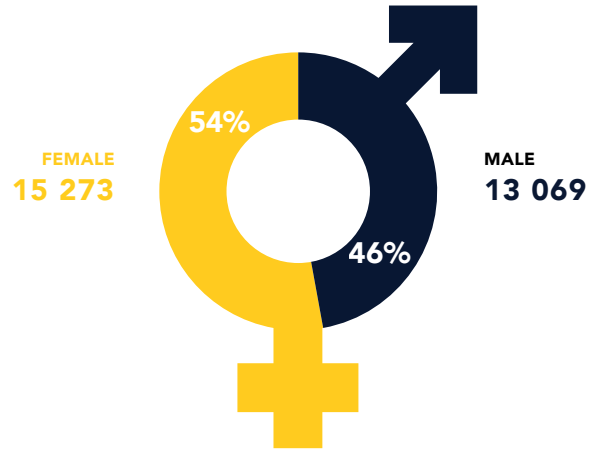
STUDENT HEADCOUNT

AS AT 11 MARCH 2020



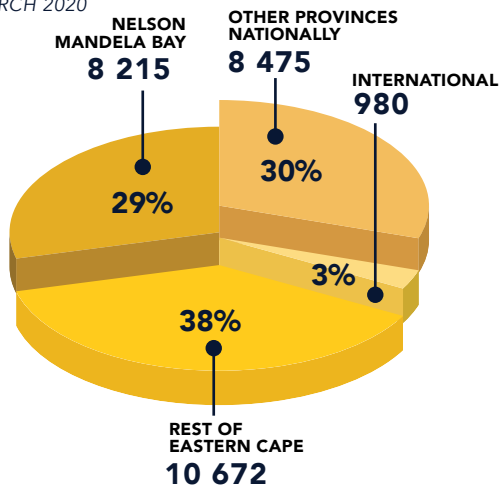
GENDER DISTRIBUTION

AS AT 11 MARCH 2020



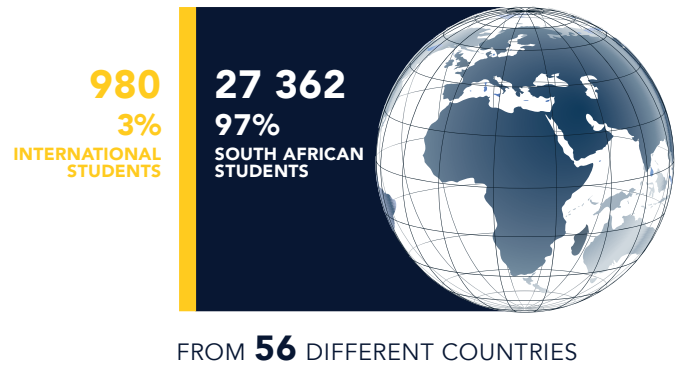
STUDENTS BY GEOGRAPHICAL ORIGIN

AS AT 11 MARCH 2020



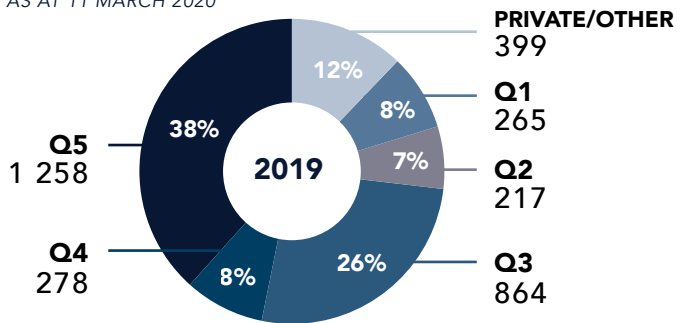
SOUTH AFRICAN AND INTERNATIONAL ENROLMENTS

AS AT 11 MARCH 2020



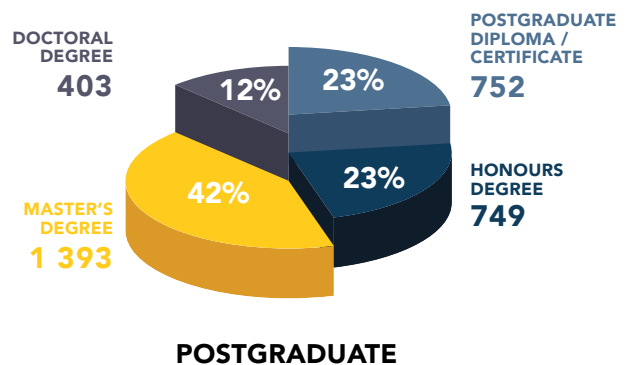
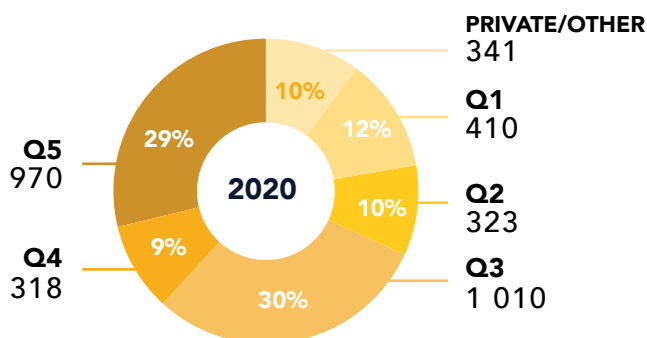
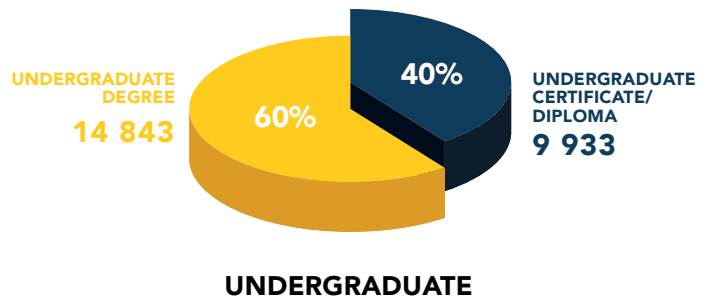
HIGH SCHOOL QUINTILE PROFILE (EXCLUDING INTERNATIONAL STUDENTS)

AS AT 11 MARCH 2020



DISTRIBUTION OF UNDER- AND POSTGRADUATE ENROLMENTS BY QUALIFICATION TYPE

AS AT 11 MARCH 2020

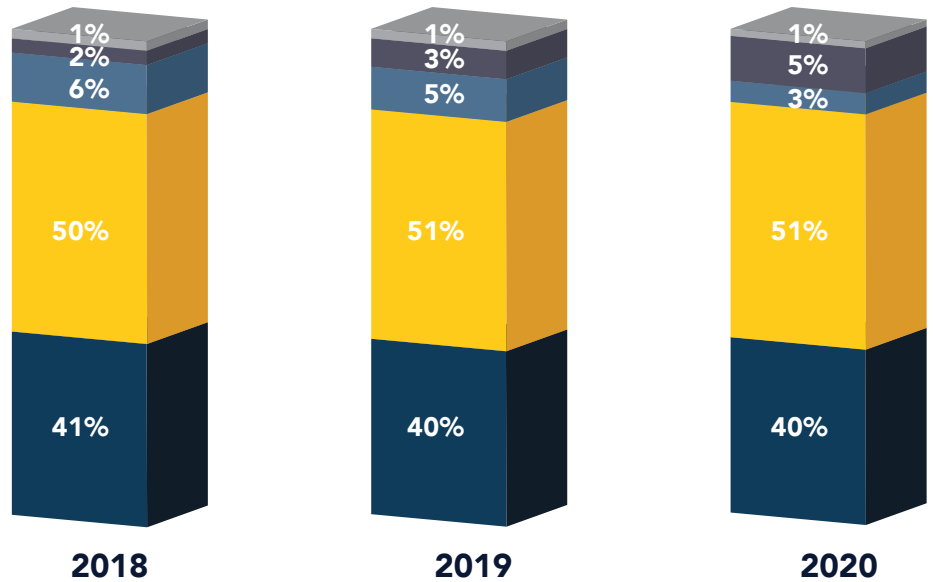


DISTRIBUTION OF UNDERGRADUATE ENROLMENTS BY QUALIFICATION TYPE

AS AT 11 MARCH 2020

NOTE:

BTech enrolments are declining since these qualifications have been phased out and are being replaced with Adv Diplomas in line with national policy requirements.



FIRST-TIME ENTERING UNDERGRADUATE ADMISSIONS AND REGISTRATION RATIOS 2020

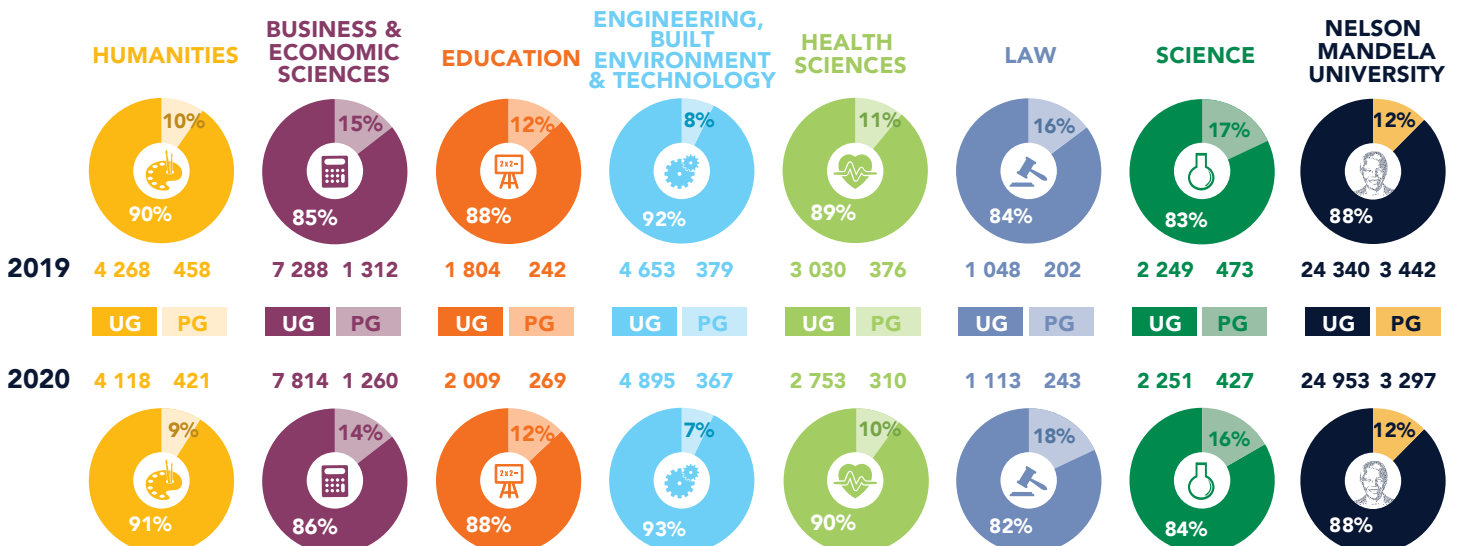
AS AT 11 MARCH 2020

	HUMANITIES	BUSINESS & ECONOMIC SCIENCES	EDUCATION	ENGINEERING, BUILT ENVIRONMENT & TECHNOLOGY	HEALTH SCIENCES	LAW	SCIENCE	NELSON MANDELA UNIVERSITY
ADMISSIONS	1 813	4 378	562	1 922	1 017	501	1 462	11 655
REGISTRATIONS	961	1 847	296	955	462	204	524	5 249
*REGISTRATION: ADMISSION RATIO	53%	42%	53%	50%	45%	41%	36%	45%

* The registration: admission ratio is the percentage of students that were admitted who finally registered

UNDER- AND POSTGRADUATE STUDENT ENROLMENTS

AS AT 11 MARCH 2020

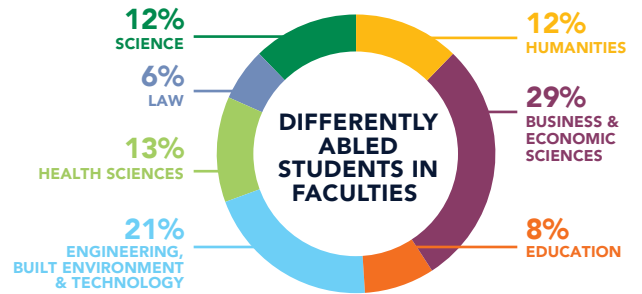
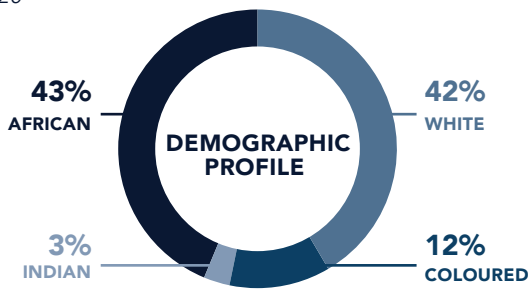


DIFFERENTLY ABLED STUDENTS (DISCLOSED)

AS AT 10 MARCH 2020

464
2019

196*
2020



65%

of disclosed students have neurodevelopmental disabilities

14%

consist of physical disabilities

11%

have chronic and multiple disabilities

10%

have sensory disabilities, i.e. blind, partially sighted and hearing impairment

* The numbers are likely to increase as more students disclose their status

STUDENTS RECEIVING FINANCIAL AID IN 2020

2019

40% of all students received financial aid (full year)

2020

48% of all students received financial aid (year to date)

Received financial assistance from NSFAS, Council and other funds
(These numbers exclude employer bursars)



ACCESS TO WIFI & PERSONAL COMPUTERS BY CAMPUS

2019

27 247

STUDENTS LOGGED ONTO WIFI



122
OUT OF 132

122 out of 132 labs are designated as teaching labs with 3 080 dedicated PCs in these labs

3 080
PCs

2020

26 412

STUDENTS LOGGED ONTO WIFI THIS YEAR



123
OUT OF 133

123 out of 133 labs are designated as teaching labs with 3 854 dedicated PCs in these labs

3 854
PCs

STUDENT : PC RATIO ON CAMPUS 2020

MISSIONVALE

486
882
1 : 2

GEORGE

250
1 536
1 : 6

2ND AVE

436
5 921
1 : 14

NORTH

1 112
6 627
1 : 6

SOUTH

1 527
13 313
1 : 9

BIRD STREET

43
221
1 : 5

STUDENT ACCOMMODATION: 2019 - 2020



2019
2020



GEORGE CAMPUS



PORT ELIZABETH CAMPUS

ON-CAMPUS BEDS:

TOTAL:

430

2 869

3 299

430*

2 869**

3 299



GEORGE OFF-CAMPUS



PORT ELIZABETH OFF-CAMPUS

ACCREDITED OFF-CAMPUS BEDS:

TOTAL:

240

8 681

8 921

262

12 307

12 569

*Additional 198 beds to be completed by June 2020. These numbers are not included in the 2020 statistics.

** 500 beds project commenced and to be completed by June 2021. Additional 300 beds to be completed in December 2021. These numbers are not included in the 2020 statistics.