

NELSON MANDELA UNIVERSITY



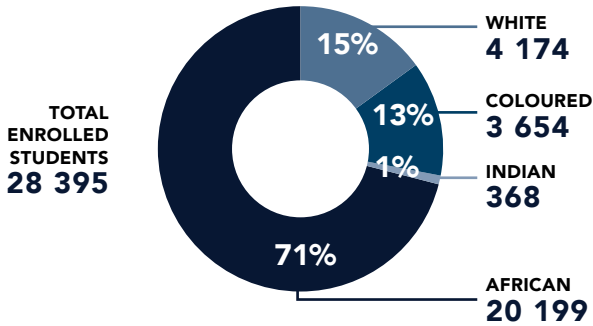
Q1
2019

Student access and enrolments at a glance: 2019

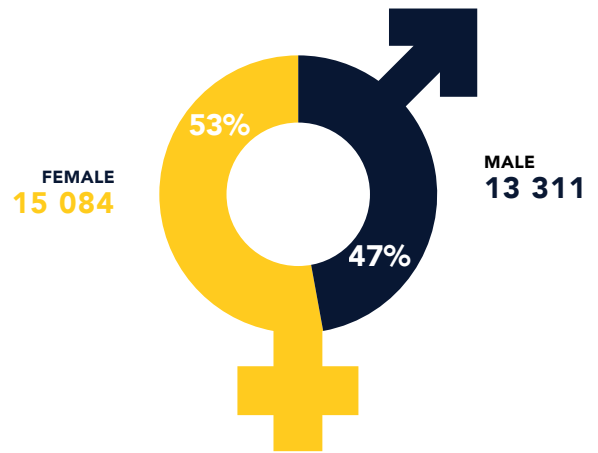
Produced by the Office for Institutional Planning

STUDENT HEADCOUNT

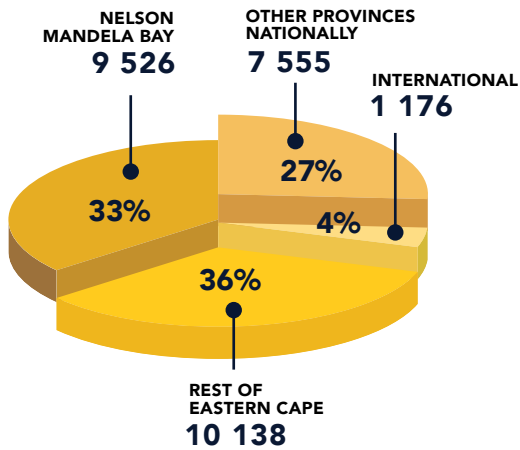
AS AT 25 MARCH 2019



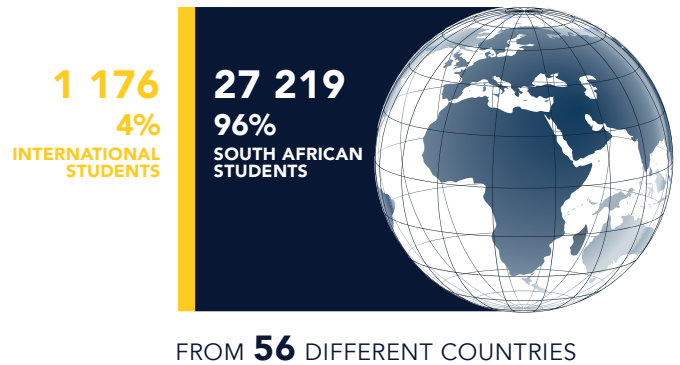
GENDER DISTRIBUTION



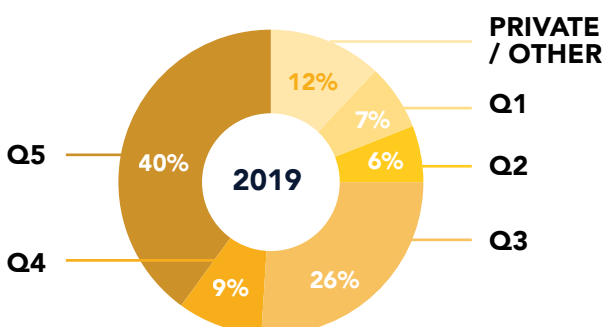
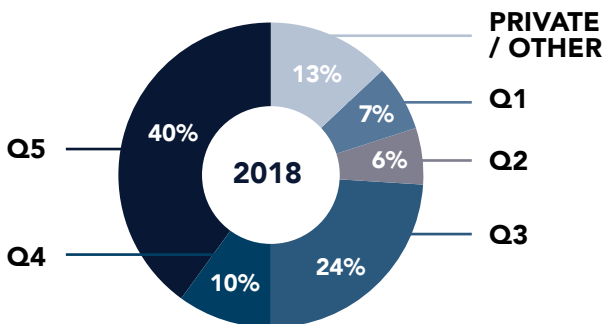
STUDENTS BY GEOGRAPHICAL ORIGIN



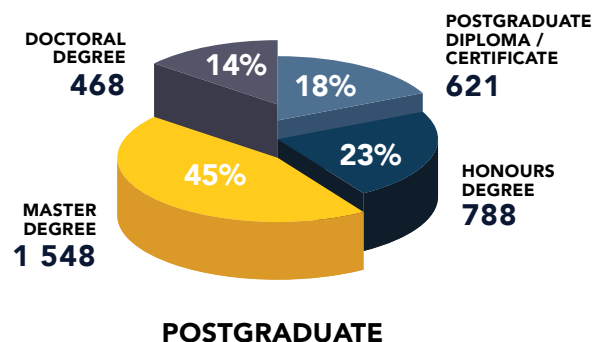
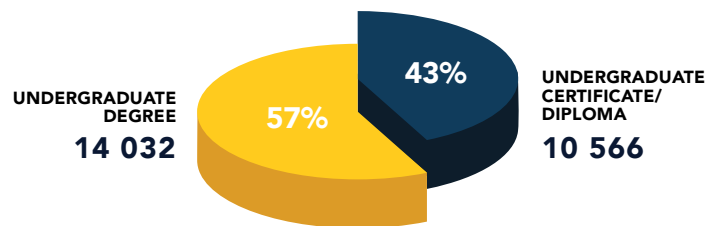
SOUTH AFRICAN AND INTERNATIONAL ENROLMENTS



HIGH SCHOOL QUINTILE PROFILE (EXCLUDING INTERNATIONAL STUDENTS)



DISTRIBUTION OF UNDER- AND POSTGRADUATE ENROLMENTS BY QUALIFICATION TYPE



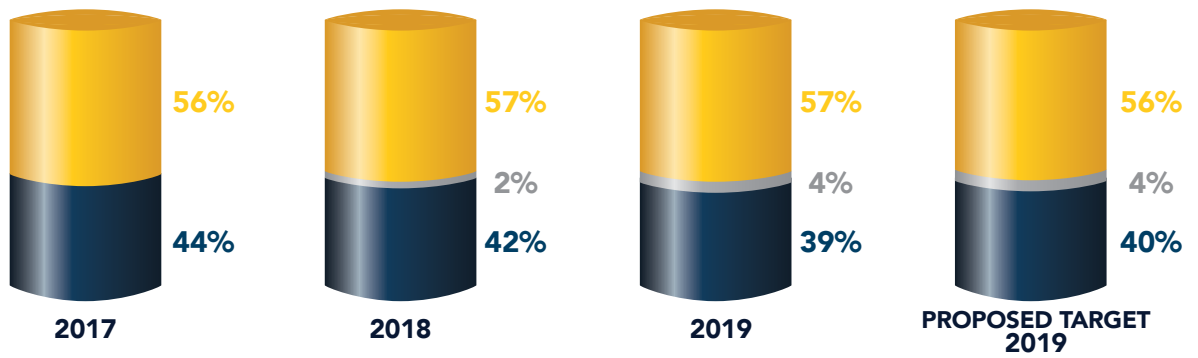
DISTRIBUTION OF UNDERGRADUATE ENROLMENTS BY QUALIFICATION TYPE

AS AT 25 MARCH 2019

UG DEGREES

ADVANCED DIPLOMA

UG DIPL / CERT



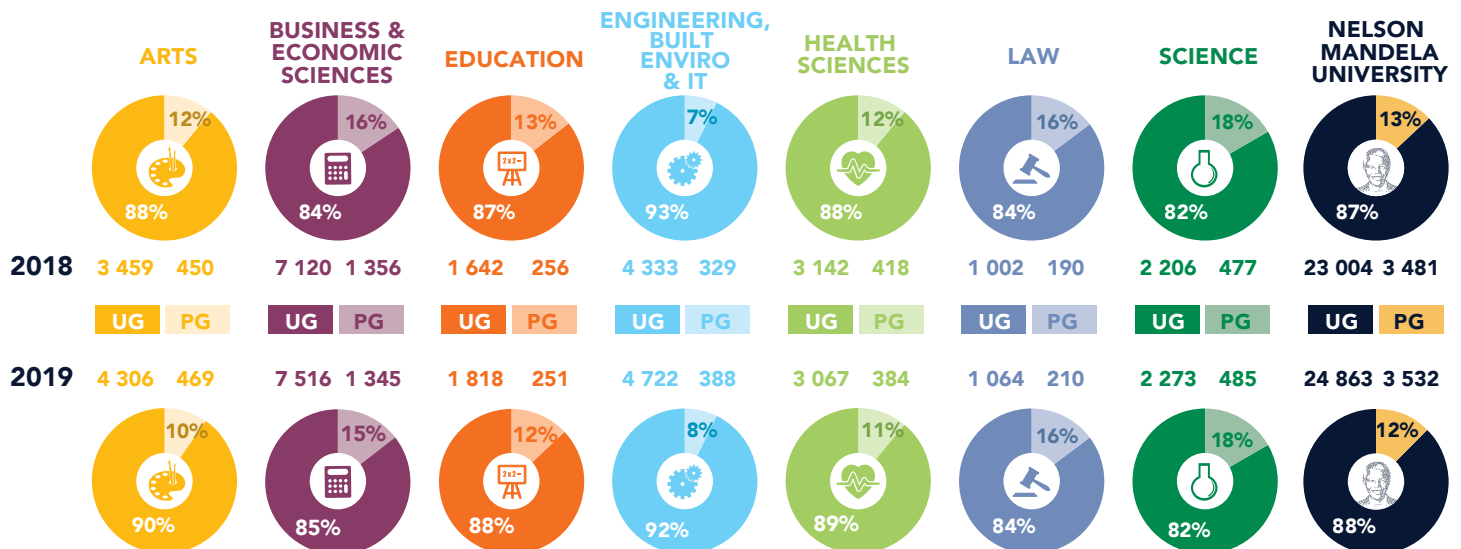
FIRST-TIME ENTERING UNDERGRADUATE ADMISSIONS AND REGISTRATION RATIOS 2019

	ARTS	BUSINESS & ECONOMIC SCIENCES	EDUCATION	ENGINEERING, BUILT ENVIRO & IT	HEALTH SCIENCES	LAW	SCIENCE	NELSON MANDELA UNIVERSITY
ADMISSIONS	2 414	3 442	480	2 069	1 218	531	1 291	11 445
REGISTRATIONS	1 569	1 900	265	1 067	588	266	572	6 227
*REGISTRATION: ADMISSION RATIO	65%	55%	55%	52%	48%	50%	44%	54%

* The registration: admission ratio is the percentage of students that were admitted who finally registered

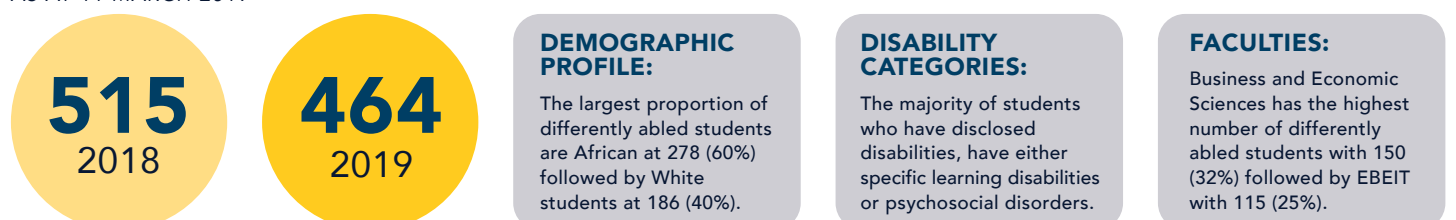
UNDER- AND POSTGRADUATE STUDENT ENROLMENTS

AS AT 25 MARCH 2019



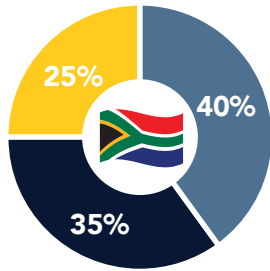
DIFFERENTLY ABLED STUDENTS (DISCLOSED)

AS AT 11 MARCH 2019

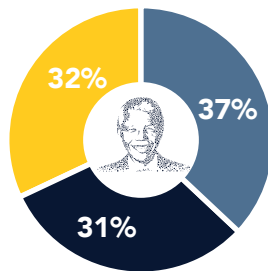


SOURCES OF INCOME

HIGHER EDUCATION SECTOR COMPARED TO THE UNIVERSITY



HIGHER EDUCATION SECTOR



MANDELA UNIVERSITY



GOVERNMENT GRANTS



STUDENT FEES



OTHER SOURCES

STUDENTS RECEIVING FINANCIAL AID IN 2017 AND 2018

2017

69%

Of all students are receiving some form of financial aid



2018

83%

Of all students are receiving some form of financial aid



WIFI & PC ACCESS - STUDENTS ACCESSING WIFI ON CAMPUS

27 247

STUDENTS LOGGED INTO WIFI THIS YEAR



122 OUT OF 132

122 out of 132 labs are designated as teaching labs with 3 080 dedicated PCs in these labs

3080 PC'S

STUDENT : PC RATIO ON CAMPUS:

MISSIONVALE

464 / 762

1 : 1.64

GEORGE

250 / 1 390

1 : 5.56

2ND AVE

436 / 5 033

1 : 11.54

NORTH

1075 / 6 843

1 : 6.37

SOUTH

1501 / 13 530

1 : 9.01

BIRD STREET

43 / 19

1 : 0.44

STUDENT TRANSPORT

2018



53 TAXIS



16 SHUTTLE BUSES

265

TRIPS PER DAY BY TAXI

101

TRIPS PER DAY BY BUS

3 975

STUDENTS TRANSPORTED BY TAXI

7 272

STUDENTS TRANSPORTED BY BUS

2019



65 TAXIS



20 SHUTTLE BUSES

325

TRIPS PER DAY BY TAXI

135

TRIPS PER DAY BY BUS

4 875

STUDENTS TRANSPORTED BY TAXI

9 720

STUDENTS TRANSPORTED BY BUS

STUDENT ACCOMMODATION: 2018 - 2019



GEORGE CAMPUS



PORT ELIZABETH CAMPUS



GEORGE OFF-CAMPUS



PORT ELIZABETH OFF-CAMPUS



ON-CAMPUS BEDS:

TOTAL:

2018

430

2 849

3 279

2019

430

2 869

3 299

ACCREDITED OFF-CAMPUS BEDS:

TOTAL:

309

6 337

6 646

240

8 681

8 921