

# NELSON MANDELA UNIVERSITY



**Q2**  
2019

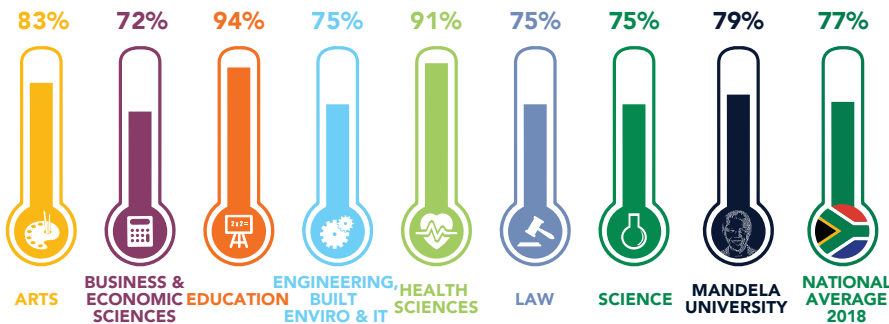
## STUDENT SUCCESS AT A GLANCE 2019

Produced by the Office for Institutional Planning

## OUR DEFINITION OF STUDENT SUCCESS

“ Student success is being self-aware, understanding one’s own **strengths and weaknesses**, mindfully setting & **achieving** one’s personal goals with **persistence and commitment**, and taking **co-responsibility** with staff and support structures to progress academically, and to **graduate as holistically developed, responsible citizens.** ”

## SUCCESS RATES OF ALL COURSEWORK MODULES BY FACULTY 2018



## SUCCESS RATES OF NSFAS LOAN-FUNDED STUDENTS 2018

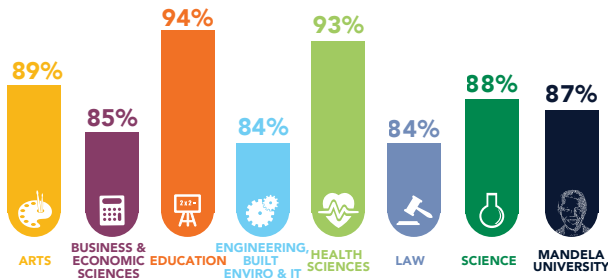
**11 435**  
STUDENTS

**76%**

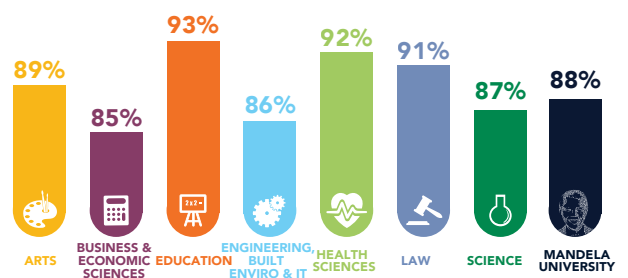
**THEIR SUCCESS RATE**  
compared to the average of 79% for all Mandela University students

## RETENTION OF FIRST YEAR STUDENTS BY FACULTY

2017 FIRST TIME ENTERING % RETURNING IN 2018

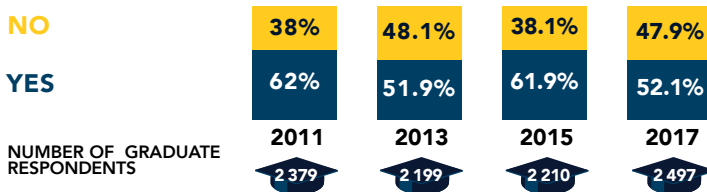


2018 FIRST TIME ENTERING % RETURNING IN 2019

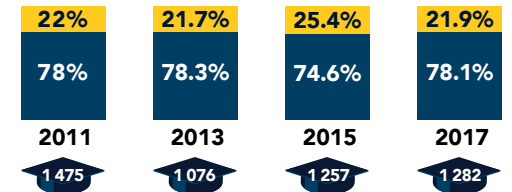


## GRADUATE EMPLOYABILITY: TRENDS FROM 2011 - 2017

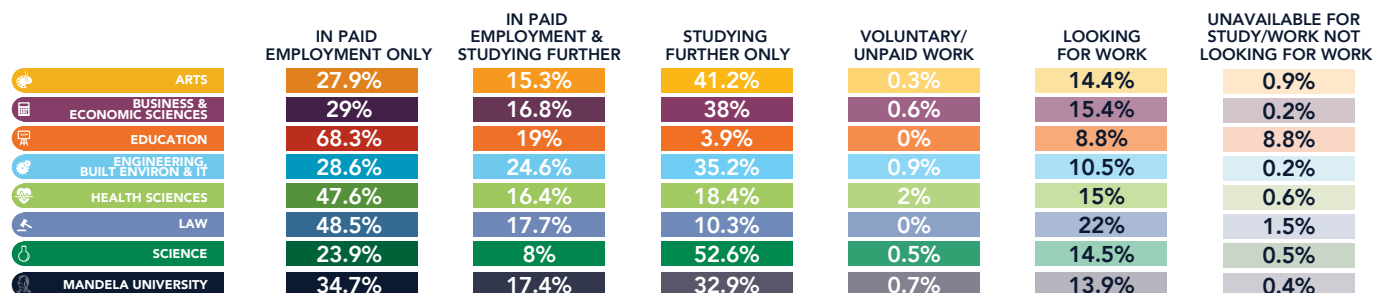
% GRADUATES IN PAID EMPLOYMENT



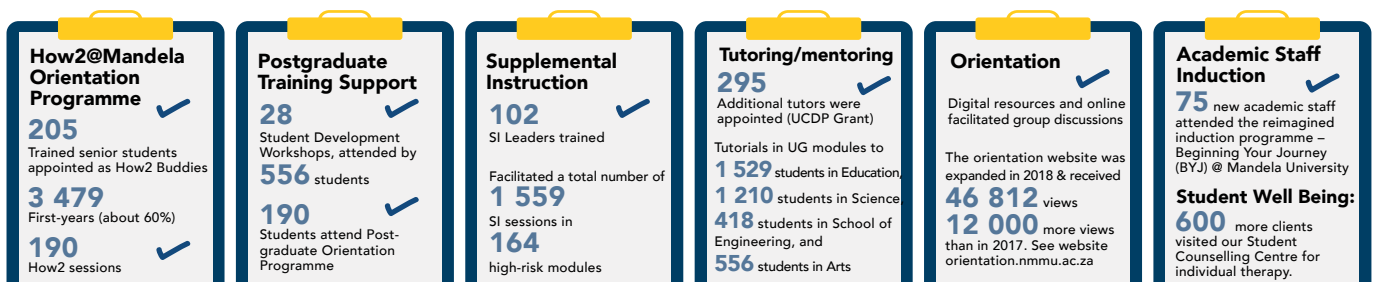
% GRADUATES IN PAID EMPLOYMENT RELATING TO THEIR QUALIFICATION



DESTINATIONS OF GRADUATES BY FACULTY 2018



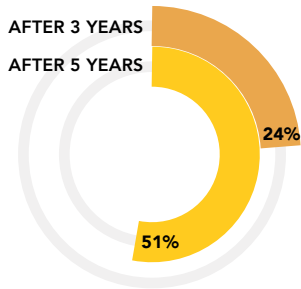
## STUDENT SUPPORT INTERVENTIONS: NUMBER OF STUDENTS BENEFITTING IN 2018



## THROUGHPUT RATES OF ALL UNDERGRADUATE QUALIFICATIONS 2018

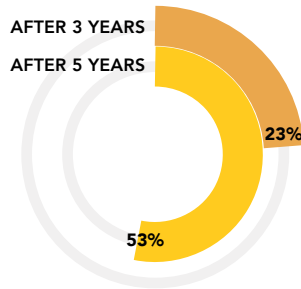
3- AND 4-YEAR DEGREES AND DIPLOMAS (2013 COHORT)

### 3-YEAR CONTACT UNDERGRADUATE DIPLOMAS (%)



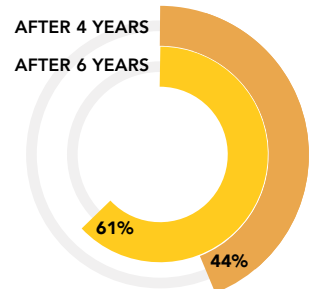
AFTER 3 YEARS 20%  
AFTER 5 YEARS 45%

### 3-YEAR CONTACT UNDERGRADUATE DEGREES (%)



AFTER 3 YEARS 26%  
AFTER 5 YEARS 50%

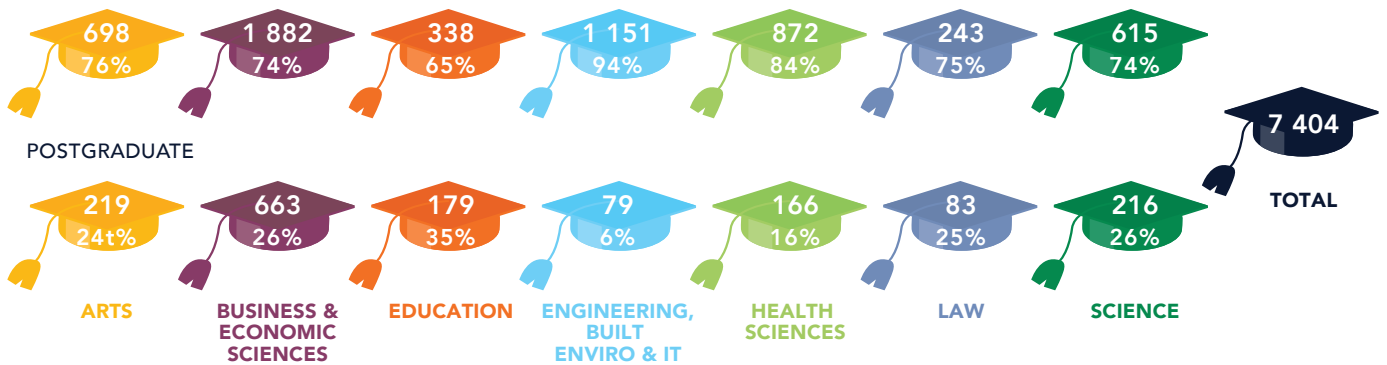
### 4-YEAR CONTACT UNDERGRADUATE DEGREES (%)



AFTER 4 YEARS 46%  
AFTER 6 YEARS 65%

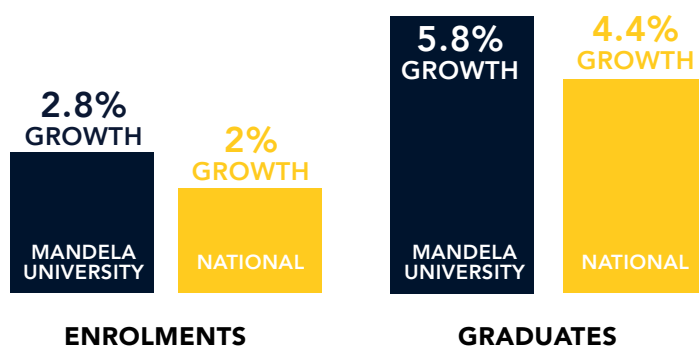
## GRADUATE OUTPUTS PER FACULTY 2018

UNDERGRADUATE



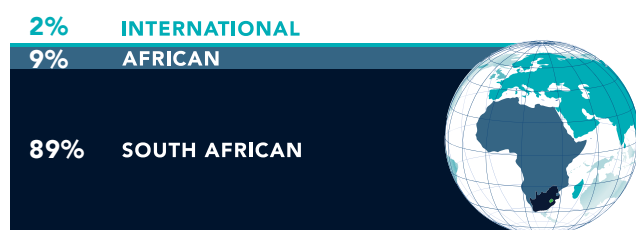
## AVERAGE ANNUAL GROWTH RATE FOR ENROLMENTS COMPARED TO GRADUATES 2018

GROWTH RATES 2014 TO 2017 FOR NELSON MANDELA UNIVERSITY AND 2013 TO 2016 FOR THE NATIONAL AVERAGE

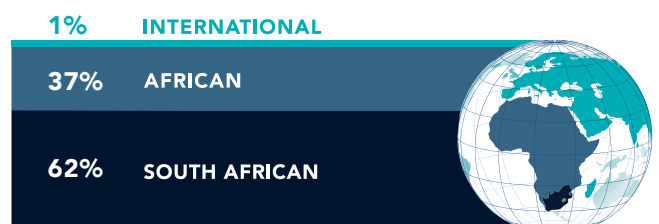


**Our graduates** have been growing at a higher rate (**5.8%**) than the **enrolments** (**2.8%**) which is an indicator of **increased efficiency**.

## GEOGRAPHICAL ORIGIN OF M&D GRADUATES 2018



MASTERS GRADUATES



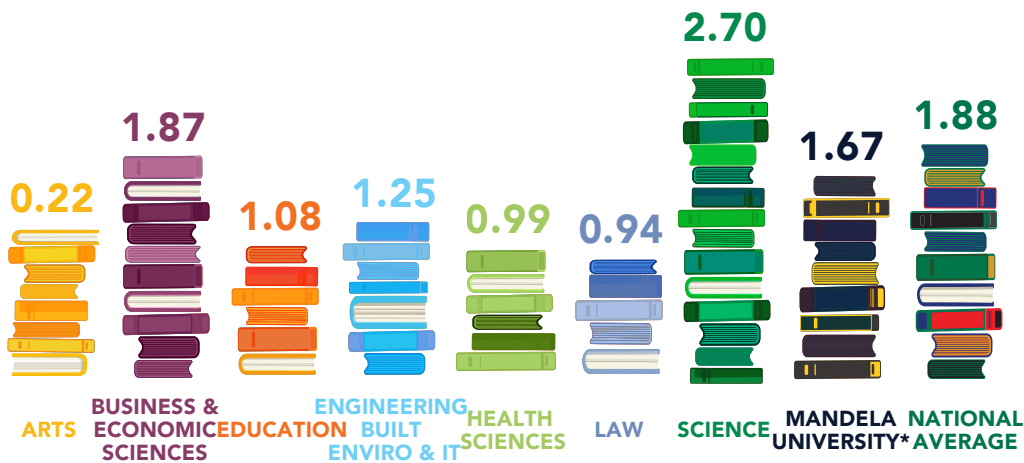
DOCTORAL GRADUATES

## M&D WEIGHTED RESEARCH OUTPUT UNITS (WROU) 2018

	ARTS	BUSINESS & ECONOMIC SCIENCES	EDUCATION	ENGINEERING, BUILT ENVIRO & IT	HEALTH SCIENCES	LAW	SCIENCE	MANDELA UNIVERSITY
MASTERS WROU 2018	69	74	6	26	35	10	75	296
% INCREASE 2015-2018	26%	-14%	-60%	10%	17%	83%	48%	11%
DOCTORAL WROU 2018	36	90	27	30	33	0	90	306
% INCREASE 2015-2018	20%	25%	29%	0%	120%	-100%	30%	28%

## RATIOS OF WEIGHTED RESEARCH OUTPUTS PER ACADEMIC STAFF MEMBER 2018

BY FACULTY COMPARED TO NATIONAL AVERAGE

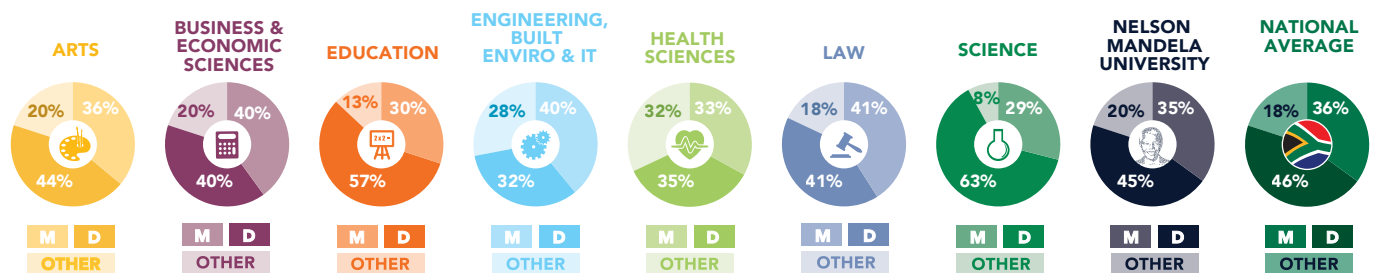


\* Including books, chapters in books and conference proceedings.

NELSON MANDELA UNIVERSITY WEIGHTED RESEARCH OUTPUTS PER ACADEMIC STAFF MEMBER COMPARED TO OTHER UNIVERSITIES

1. UP
2. STELLENBOSCH
3. RHODES
4. WITS
5. UKZN
6. FORT HARE
7. UCT
8. UJ
9. NWU
10. UWC
11. UFS
12. MANDELA
13. UNISA

## % STAFF WITH M&D QUALIFICATIONS BY FACULTY 2018



## ACADEMIC FTE STUDENT: STAFF RATIO 2018

BY FACULTY COMPARED TO NATIONAL AVERAGE

