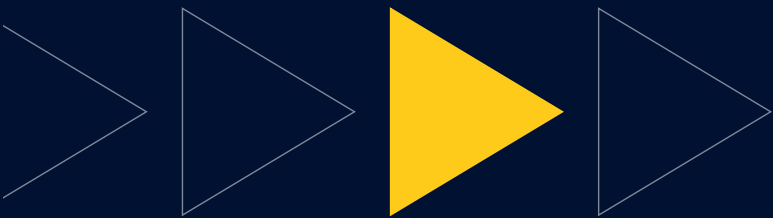


Faculty of **Engineering, the
Built Environment
and Technology**





School of Engineering

Department of Electrical Engineering
Department of Industrial Engineering
Department of Mechanical Engineering
Department of Marine Engineering
Department of Mechatronics

School of Architecture

Department of Architecture
Department of Architectural Technology & Interior Design



Student Access & Enrolment Office
Gqeberha Campuses: 041 504 1111

George Campus: 044 801 5194
(Only Information Technology - IT)

info@mandela.ac.za
ebet.mandela.ac.za

School of the Built Environment and Civil Engineering

Department of Construction Management
Department of Building & Human Settlement Development
Department of Quantity Surveying
Department of Civil Engineering

School of Information Technology

Department of Applied Technologies
Department of Software Engineering
Department of Network Engineering
Department of IT Management and Governance

Prospective student are advised to contact the Student Access & Enrolment Office prior to applying or refer to the faculty website and the prospectus for more information regarding any qualifications offered within the Faculty of Engineering, the Built Environment & Technology.

Message from the Vice-Chancellor

Welcome

It is my singular honour and privilege to welcome you to the Nelson Mandela University family. Our University is named after the iconic global statesman Nelson Rolihlahla Mandela, who transformed this country through his unwavering commitment to social justice and equality.

Our vision is to be a dynamic African university, recognised for its leadership in generating cutting-edge knowledge for a sustainable future. That is why we are committed to providing inclusive and transformative education that will prepare you to succeed in a diverse and globalised world.

The idea of 'the African university' is for us not simply a catchy byline or tagline, but an ethical injunction that should make clearer the gifts of our country and continent, including its peoples, knowledges, cultures, and languages. In short, the African university should offer us a different way of encountering the world.

Our academic and professional programmes range from certificate-level through to research doctorates, and our qualifications are recognised and accredited by the relevant professional bodies, locally and, in some cases, internationally.

A wide-range of academic programmes are offered in seven faculties:

- Business & Economic Sciences
- Education
- Engineering, the Built Environment & Technology
- Health Sciences
- Humanities
- Law
- Science

We prepare our graduates to become well-rounded citizens, that are socially aware on a global scale, capable of making a difference in whatever path they choose.

As you will see from this guide, Nelson Mandela University offers you an ideal environment and facilities, excellent learning opportunities, a wide spectrum of beyond-the-classroom activities, and a solid values-driven foundation on which to pursue your future dreams.

We look forward to welcoming you to Nelson Mandela University in 2027.

Prof Sibongile Muthwa

Prof Sibongile Muthwa
Vice-Chancellor

Umyalezo osuka kuSekela-Ngqonyela

Wamkelekile

Yinyhweba newonga elilodwa ukunamkela kusapho lweYunivesithi iNelson Mandela. IYunivesithi yethu ithiywe emva kwenjojeli yehlabathi uMongameli uNelson Rolihlahla Mandela, owenza inguqu kweli lizwe ngokuzibophelela kwakhe okungagungqiyo kubulungisa bezentlalo kunye nomakulinganwe.

Umbono wethu kukuba yiYunivesithi yaseAfrika eshukumisayo, ethathelwa ingqalelo ngesikhokelo sayo sokuvelisa ulwazi olungazange lwabakho ukulungiselela ikamva elizinzileyo. Kungoko sizibophelele ekunikazeleni ngemfundo engenguqu noqukaniso eza kukulungiselela ukuba uphumelele kwihlabathi leyantlukwano elibumbeneyo.

Ingcamango yeYunivesithi yaseAfrika ayikokutsala nje amehlo, koko yindlela elungileyo nenocwangco yokuziphatha eza kwenza kucace iziphiwo zelizwe lethu nelizwekazi, ezibandakanya abantu, ulwazi, kunye neelwimi. Ngamafutshane, iYunivesithi yaseAfrika mayisinike indlela eyahlukileyo yokuqubisana nehlabathi.

Iinkqubo zethu kwezemfundo nezobungcali ngokwecandelo ukusukela kwinqanaba lesatifikayeti ukuya kuphandonzulu lobuGqirhalwazi, zithathelwa ingqalelo kwaye zamkelwe ngokusemthethweni ngamaqumrhu ezobungcali efanelekileyo, alpha ekhaya, maxa wambi awamazwe ngamazwe.

Intlaninge yeenkqubo zezemfundo inikezelwa kwiifakhalthi ezisixhenxe:

- EzeNzululwazi kwezoShishino nezoQoqosho
- EzeMfundo
- EzobuNjineli, iNdawo yoLwakhiwo nezobuChwepheshe
- EzeNzululwazi kwezeMpilo
- EzoLuntu
- EzoMthetho
- EzeNzululwazi

Sixhobisa izithwalandwe zethu ukuba zibe ngabemi abazinzileyo, abanolwazi ngezentlalo kwisigaba sehlabathi, abakwaziyo ukwenza umahluko nakweyiphi na inkalo abayikhethileyo.

Njengoko uza kubona kwesi sikhokelo, iYunivesithi iNelson Mandela inikezela ngendawo nezixhobo ezizizo, amathuba okufunda agqwesileyo, nothotho lwemisebenzi yangaphaya kwegumbi lokufunda, kunye nesiseko esiluhlalima seenqobo ezisemgangathweni apho unokufezekisa amaphupha ekamva lakho khona. Sijonge phambili ekunamkeleni kwiYunivesithi iNelson Mandela ngowama2027.

Njing Sibongile Muthwa

Njing Sibongile Muthwa

Boodskap van die Visekanselier

Welkom

Dis is my besondere eer en voorreg om jou welkom te heet by Nelson Mandela Universiteit-se familie. Ons Universiteit dra die naam van die ikoniese wêreldleier Nelson Rolihlahla Mandela, wat ons land getransformeer het deur sy onvermoeide toewyding tot sosiale geregtigheid en gelykheid.

Ons visie is om 'n dinamiese Afrika-Universiteit te wees, wat erken word vir ons leierskap in die ontwikkeling van vooruitstrewende kennis vir 'n volhoubare toekoms. Daarom is ons daartoe verbind om inklusiewe en transformerende onderwys te bied wat jou sal voorberei om in 'n diverse en geglobaliseerde wêreld te slaag.

Vir ons is die idee van 'n "Afrika-Universiteit" nie bloot 'n treffende slagspreuk nie, maar 'n etiese oproep wat die rykdom van ons land en die kontinent duideliker moet laat uitstaan — insluitend sy mense, kennisstelsels, kulture en tale. Kortliks, die Afrika-Universiteit behoort vir ons 'n ander manier te bied om die wêreld te benader.

Ons akademiese en professionele programme strek vanaf sertifikaatvlak tot by navorsingsdoktorsgrade, en al ons kwalifikasies word erken en geakkrediteer deur die toepaslike professionele liggame, plaaslik en in sommige gevalle internasionaal.

'n Wye reeks akademiese programme word in sewe fakulteite aangebied:

- Besigheids- en Ekonomiese Wetenskappe
- Opvoedkunde
- Ingenieurswese, die Beboede Omgewing en Tegnologie
- Gesondheidswetenskappe
- Geesteswetenskappe
- Regsgeleerdheid
- Natuurwetenskappe

Ons berei ons gegradueerdes voor om veelsydige burgers te word wat wêreldwyd sosiaal bewus is en in staat is om 'n betekenisvolle verskil te maak, watter rigting hulle ook al volg. Soos jy in hierdie gids sal sien, bied Nelson Mandela Universiteit jou 'n ideale omgewing en uitstekende fasiliteite, uitmuntende leergeleenthede, 'n wye spektrum van aktiwiteite buite die klaskamer, en 'n stewige waardegedrewe grondslag, waarop jy, jou toekomsdrome kan bou.

Ons sien daarna uit om jou in 2027 by Nelson Mandela Universiteit te verwelkom.

Prof Sibongile Muthwa

Prof Sibongile Muthwa
Visekanselier



About Nelson Mandela University

Nelson Mandela University is the only university in the world that carries the name of Nelson Rolihlahla Mandela. We are committed to providing a welcoming and inspiring environment that is supportive, innovative, and diverse. Our students need to feel they are in a place of learning and discovery, founded on strong, egalitarian values that encourage them to express themselves, stretch themselves, and seek new solutions for a better world.

The University embraces Nelson Mandela's challenge to be "caring, responsible and innovative", and recognises the importance of continuously growing and adapting in the pursuit of knowledge, emancipation, and lifelong learning.

The university boasts more than a century of experience in quality higher education, research, and technological innovation. We unite the best traditions of both the academic and technological worlds – from entrance level (certificate) through to research level (PhD).

- We are the largest higher education institution in the Eastern and Southern Cape.
- 34 682 students are enrolled on seven different campuses – six in Nelson Mandela Bay (Gqeberha, formerly Port Elizabeth), and one in George.
- Programmes are housed within seven faculties (Business & Economic Sciences; Education; Engineering, the Built Environment & Technology; Health Sciences; Humanities; Law and Science), and in some cases, programmes are duplicated on more than one campus.
- The university's George Campus is situated at the foot of the Outeniqua Mountains in the picturesque coastal town of George.

With their spectacular natural surroundings – from beaches to mountains to game reserves – Nelson Mandela Bay and George are ideal places to spend your student years, offering all the advantages of city living in a vibrant and multi-cultural environment.

Student services

A wide range of student services and support facilities are offered on university campuses to assist you in every aspect of student life – from what to study, to finding suitable employment after graduation. The university offers a variety of social and cultural activities, which means you can have fun while you study. There is an extensive range of sport codes, associations, societies, clubs, and facilities, allowing you to make new friends, interact with your fellow students and explore subjects of mutual interest.

Below are some of the various services offered to our students:

Library and Information Services

Nelson Mandela University has a network of well-stocked libraries, computer laboratories, and student learning centres which enable students to obtain quality information resources and services required to excel in their various academic courses. These centres are located on all campuses and offer students a quiet space for studying.

Student Health Services

Students have access to a comprehensive primary health care service on every campus, and qualified medical personnel to assist with any health matters which may arise. All services are rendered by registered health care professionals e.g., professional nurses, medical doctors, and registered counsellors.

Emthonjeni Student Wellness

Emthonjeni Student Wellness consist of a team of professionally trained psychologists (clinical, educational, counselling and research psychologists), registered counsellors and intern psychologists who are registered with the Health Professions Council of South Africa. The centre helps students with career choices, job-seeking skills, and any social, personal, or academic problems which they may experience while at university. The centre offers advice in areas such as time management, study methods, personal, social, and emotional wellness, as well as career planning and employment readiness.

Student Development & Governance (SDG)

This department contributes towards the holistic development of students. The core functions of this department are the training and development of student leadership, the coordination of student life & events, and supporting student governance structures such as the Student Representative Council (SRC), the Student Housing Council; faculty representatives, the Sports Council, Oppidani and Rag. They also provide students with advice on the various student societies that you could join. There are currently 29 societies which students can join and these are categorised as academic, religious, developmental, social responsibility and political.

Arts, Culture & Heritage

Arts, Culture & Heritage focuses on the holistic development of students by creating opportunities for their participation in the arts. Arts and Culture provides an environment in which students can exercise and develop their need for cultural and artistic expression. You are provided with the opportunity to express your talents by joining a wide range of interactive, cultural, and active societies. These societies are diverse and vary from performing arts, dancing, music, drama, and choirs.

Student Representative Council (SRC)

The SRC is elected annually in a democratic election to represent the interest of students. The SRC is the only body which the university officially recognises as speaking on behalf of the students.

Oppidani (day students)

Students who do not live in a campus residence are known as Oppidani students. All non-residential Nelson Mandela University students are automatically members of the Oppidani House and are known as Oppies. Although Oppies live off campus, participation in non-academic life is encouraged.

Societies

Students can become a member of numerous student-run societies enabling them to have fun with likeminded students while gaining valuable leadership, communication, and social skills. There are presently 64 societies active on our various campuses, and these societies are categorised as either academic, religious, developmental, social responsibility or political.

Madibaz Youth Entrepreneurship Lab

The Madibaz Youth Entrepreneurship Lab aims to build an enabling entrepreneurial ecosystem at Nelson Mandela University through the advancement of support to new and existing youth entrepreneurs as well as through collaborations in areas of entrepreneurship development. The Entrepreneurship Lab also aims to embrace entrepreneurial mindsets and ethos amongst the students at Nelson Mandela University through practical entrepreneurship workshops, symposiums, mentorship, as well as opportunity for student entrepreneurs to run businesses on-campus.



Madibaz Sport


Madibaz sport offers a wide variety of competitive and recreational sport programmes for students and staff, as well as the wider university community. These programmes provide students with the opportunity to participate in various sport and recreational activities ranging from informal social games to highly competitive leagues where skills are tested against the best in the province and country. In addition, through the various high-performance programmes coordinated by the Madibaz High Performance Complex, the university plays a major role in the process of developing elite and potentially elite players.

Madibaz sport also provides club members with excellent sport facilities, scientific based coaching programmes, which includes organisational and administrative support. Well-equipped health and fitness centres offer professional gym facilities at student prices, and aid in sport performance testing, sport specific training and injury rehabilitation.



The following sport codes are offered on the various university campuses:

Athletics – Basketball – Boxing – Chess – Cricket – Football – Futsal – Golf – Hockey – Karate – Netball – Rugby – Rowing – Squash – Surfing – Swimming – Table Tennis – Tennis – Volleyball – Water polo



MADIBAZ

All teams have nicknames, or names by which they are popularly known. Those who work, study and play sport at Nelson Mandela University proudly refer to themselves as Madibaz. In addition to our name, the university also boasts a dolphin mascot, named Diba.

Admission to Nelson Mandela University

Overview

- Applications for early admission (excluding MBChB, BPharm & BRad applications) should be submitted by **3 August 2026**. Late applications (excluding MBChB, BPharm & BRad applications) will however be considered after this date, based on academic merit, until **30 September 2026**. Places are limited and it is therefore in your best interest to submit your application early.
- MBChB applications close on **30 June 2026**. Places in the MBChB degree are limited and it is therefore in your best interest to submit your application early.
- Bachelor of Pharmacy (BPharm) and Bachelor of Radiography (Diagnostic) applications also close on **30 June 2026**. Places in the Bachelor of Radiography (Diagnostic) & Bachelor of Pharmacy (BPharm) degrees are limited, and it is therefore in your best interest to submit your application early.
- Prospective students must meet the statutory minimum requirements based on the National Senior Certificate (NSC), or equivalent school-leaving certificate for admission to a higher certificate, diploma, or degree qualification, in order to be considered.
- Admission to an undergraduate programme will be further determined by an applicant's Applicant Score (AS).
- Submission of a complete application does not mean that you have been accepted as a student, or that you may register. All prospective students are selected in accordance with the admissions policy of the university, and applicants will be notified of the outcome of their application by the Student Access and Enrolment Office.
- If you are currently in Grade 12, conditional acceptance is based on your **Applicant Score (AS)** obtained in your Grade 11 final, or Grade 12 June or Grade 12 September examinations. However, if you have already matriculated then your final Grade 12 NSC, SACAI, or IEB results will be used to evaluate your application for conditional acceptance. Please note that the final decision (to be made in January) is based on your final Grade 12 NSC/SACAI/IEB exam results.
- Applicants with the highest Applicant Scores (AS) for a programme are prioritised for final selection, also called a firm offer - until all spaces are taken. Final selection only takes place in January when final Gr 12 examination results are available. To increase your chances of acceptance applicants will need to have achieved excellent results in their final exam or have achieved far more than the minimum admission criteria required for a programme, to be considered.
- Once you've submitted your application you may be required to submit a portfolio of evidence, audition or attend an interview. Your admission decision will then only be made once one, or all of these additional requirements have been completed.
- In addition to the general university admission requirements, each programme also has its own specific requirements.
- Applicants with alternate, international, or foreign qualifications must satisfy the requirements laid down by the Matriculation Board to qualify for a certificate of exemption for a particular alternate, international or foreign school-leaving qualification. These requirements are contained in Government Gazette No. 31674, 5 December 2008, and can be found on the Universities South Africa (USAF) website <https://mb.usaf.ac.za/sc-government-gazette-5-december-2008/>. Applications for such certificates must be made to the Matriculation board directly: <https://mb.usaf.ac.za/>
- In the case of applications by candidates who have studied at other higher education institutions accredited by the South African Qualifications Authority (SAQA), the results obtained at such institutions will be considered, together with their academic record and certificate of conduct.
- There are limits to the number of students that can be admitted to each programme.
- **If a programme is full, you may be denied admission even though you meet the minimum requirements.**

- Prospective students who **matriculated prior to 2008** must please contact the university's Student Access & Enrolment Office to determine their admission requirements.
- For more information on the application process please contact **041 504 1111** or visit our website <https://www.mandela.ac.za/Study-at-Mandela> before applying.
- **Please note that admission requirements are subject to change. Information in this programme guide was correct as of April 2026.**



Admission Requirements

National Senior Certificate (NSC)

- The table below explains what the minimum statutory requirements for each qualification level are (Higher Certificate, Diploma or Degree).
- The university has also set its own additional minimum entry requirements.

Qualification	Minimum statutory entry requirement
Higher Certificate	Pass the NSC, with a minimum of 30% in the language of learning and teaching of the higher education institution, together with any other university requirements.
Diploma	Pass the NSC with a minimum of 30% in the language of learning and teaching of the higher education institution, coupled with an achievement rating of 3 (40–49%) or better in four recognised NSC 20-credit subjects, together with any other university requirements.
Bachelor's Degree	Pass the NSC with a minimum of 30% in the language of learning and teaching of the higher education institution, coupled with an achievement rating of 4 (50–59%) or better in four NSC 20-credit subjects together with any other university requirements.

Please note that the achievement of the minimum NSC admission requirements does not necessarily guarantee admission to any programme or field of study at Nelson Mandela University.

How to calculate your Applicant Score (AS)

- First look-up the **Applicant Score (AS)** for the qualification you are applying for – also note any required subjects.
- Your Applicant Score (AS) will be different if you took Mathematics, Mathematical Literacy or Technical Mathematics at school.
- Your Applicant Score (AS) is calculated using **six** subjects. Please note that Life Orientation (LO) is excluded.
- Write down your Grade 12 subjects and the most recent percentage (%) obtained in each subject (**NO** Gr 12 March results).
- You **MUST** include the results for the following **three fundamental subjects: 1)** Home language; **2)** 1st Add. Language; and **3)** Maths; or Maths Lit; or Technical Maths.
- For applicants with seven Grade 12 NSC/IEB subjects, their AS is calculated by adding the percentages for their six 20-credit subjects (**Note** that the Life Orientation percentage is not included as it is a 10-credit subject). This gives a score out of 600.
- In addition, for those applicants from quintile 1 to 3 schools who attain 50% or higher for Life Orientation, 7 additional points are added to their score out of 600 to arrive at their final AS.

- Compare your AS & subject requirements to the minimum needed for the qualification you want to apply for.
- If your Applicant Score (AS) & subject requirements are below the minimum required, you will need to consider another qualification for which you do qualify.

* All South African **public** ordinary schools are categorised into five groups, called quintiles. Quintile 1 to 3 are non-fee-paying schools, while Quintiles 4 & 5 are fee paying schools.

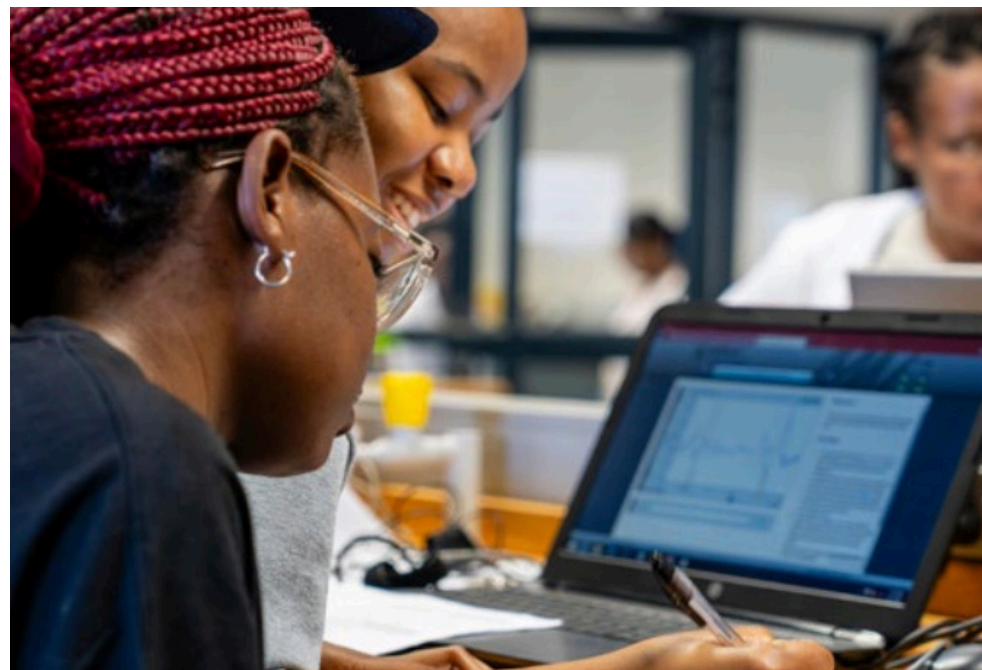
The table below provides an example of how to calculate the AS for:

- Applicant 1** who has 7 NSC Grade 12 subjects, who is applying for a programme with Life Science and Physical Science as required subjects: and
- Applicant 2** who is applying for the same programme, but who took 8 subjects in Grade 12.
- Applicant 3** who is applying for the same programme, but who is from a quintile 1, 2 or 3 school.

NSC Subject	Applicant 1		Applicant 2		Applicant 3 from quintile 1 to 3 school	
	% obtained	% used to calculate AS	% obtained	% used to calculate AS	% obtained	% used to calculate AS
isiXhosa (Home Language)	78	78	78	78	78	78
English (1st Additional Language)	60	60	60	60	60	60
Mathematics	65	65	65	65	65	65
Life Science	62	62	62	62	62	62
Physical Science	50	50	50	50	50	50
History	–	–	60	60	–	–
Geography	55	55	55	–	55	55
Life Orientation	88	–	88	–	88 LO>50%	7
APPLICANT SCORE (AS)		370		375		377

How do you apply?

- Applicants can apply online by logging on to www.mandela.ac.za/Study-at-Mandela
- Ensure that you meet the minimum **Applicant Score (AS) and subject requirements** before submitting your completed online application and supporting documentation.
- Please note that certain qualifications have additional selection processes, for example a portfolio of evidence, interview, or fitness/medical tests.
- **No application fee** is required for South African citizens, but there is an application fee for International Students.
- **Remember to include your cell number on your form**, as we will be sending you your application status and other important information via this number (Please do not include +27 or any spacing when you enter your cell number).
- Applications for early admission should be submitted by **3 August 2026**.
- Late applications will still be considered up to **30 September 2026**, but as space is limited, we advise applicants to submit/complete their application form before the August closing date.
- MBChB, BPharm and Bachelor or Radiography (Diagnostic) qualifications close earlier (**30 June 2026**) than the dates listed above. Applicants need to consult the student access & enrolment office, website, or faculty to determine annual closing dates. No late applications will be considered after the published closing date.



Online applications

- To apply online, you will need your **own cell number** and a valid **personal email address** (should you not have an e-mail account, please open one before proceeding with your online application).
- Online application(s) are **divided into two sections** (please ensure you complete both).
- **Section 1** (applicant profile) – before applying online you will first need to create an applicant profile/account, before you will be able to access the online application platform. This does not mean that you've applied, nor will you be considered for admission yet.
- Once created, you'll be sent an e-mail with a link in which you need to verify your e-mail address (should you not have received this e-mail, please look in your spam mailbox before contacting the University).
- Using the link provided, login using your newly created username and password to begin your online application.
- **Section 2** (online application) - complete all relevant sections and upload the support documents required, to finalise your online application. If you have indicated you require student housing, a separate online application will need to be completed.
- Guidelines on how to apply for student housing will be emailed to the account you have registered with.
- Remember to include **all your supporting documentation** with your online application as a PDF or JPEG formatted attachment.
- No changes can be made after you have submitted your application form. If you need to update your online application, refer to the online application guideline document for the process you need to follow.
- Should you require support in completing your online application, you may contact our Contact Centre on **041-504 1111**, or e-mail: info@mandela.ac.za; or you can also log a query on <https://crm.mandela.ac.za>

Important documentation

In order for the university to finalise your application you are requested to submit the following support documentation with your application:

- A certified copy of your **identity document** (ID document compulsory for SA Citizens – your application cannot be processed without a certified copy of your ID. You may also provide your ID number or serial number that appears on your birth certificate should you still be waiting for your ID Document to be issued).
- A certified copy of **your latest school results** (grade 11 final, or grade 12 June/September results, or final school leaving results if you have already completed Gr 12 (e.g., if you are currently at school and apply in August submit your June results). **No grade 12 March results.**
- **Declaration by your parent / legal guardian / surety form** (downloaded from the university website),
- A certified copy of your **parent / legal guardian / surety's identity document.**
- Completed **disability assessments form** (if applicable).
- Full **official academic record(s) and certificate(s) of conduct** from previous higher education institution(s) (if applicable).
- Copy of your current **residential / home or postal address.**

NB: Please note that your **student number/identity number** must clearly be indicated on all documentation submitted. Your application form cannot be processed if you do not include all supporting documentation with your application.



Extended Curriculum Programmes

The transition from school to university is challenging for most young people. It is, however, even more dramatic for learners who for various reasons, find that they do not meet the minimum admission requirements of the programme of their choice. Nelson Mandela University offers a wide range of extended curriculum programmes that provide such students with the opportunity to enroll for an extended programme in order to obtain the same mainstream qualification at the end of their study career. In practice, it implies that a student will complete a three-year degree or diploma programme in four years. These programmes provide an environment in which academic support and skills development are integrated with regular academic work. Additional support courses and activities in the first two years of the extended programme assist students to adapt to the university's learning environment in order to follow the mainstream courses during the last two years of study. International/Foreign/NCV level 4 & senior certificate equivalency conversion table.



International/Foreign/NCV level 4 & senior certificate equivalency conversion table

- South African and International applicants with International, NC(V) level 4 or Foreign School-Leaving certificates, should use the table below to calculate an equivalent Applicant Score (AS) for admission, based on percentages obtained in such certificates.
- Applicants with international or foreign qualifications must also satisfy the requirements laid down by the Matriculation Board to qualify for a certificate of exemption for a particular international or foreign school-leaving qualification. Applications for such certificates must be made to the Matriculation board directly: <https://mb.usaf.ac.za/>
- Applicants will have to comply with the minimum Applicant Score (AS) set for the UG qualification they wish to apply for, as well as meet any other additional subject requirements directly.
- To calculate your Applicant Score (AS) use the symbols/achievement rating/percentages obtained in your school-leaving examinations in order to convert them to an equivalent achievement standard on the National Senior Certificate (NSC).
- Your AS is calculated using six subjects, which must include the language(s) and subjects required for admission but excluding LO

Subject % to use when calculating the Applicant Score*	Senior Cert HG	Senior Cert SG	HIGCSE NSSC HL	IGCSE NSSC OL	O-LEVEL	AS	A-LEVEL	IB HL	IB SL	KCSE	NC(V)4** Fundamental	NC(V)4 Vocational
115							A*, A	7			Use your actual percentage(s) obtained on your statement of results / certificate.	
105							B	6				
95	A		1			A	C	5	7	A+,A		
85	B		2			B	D	4	6	A-		
75	C	A	3	A	A	C	E	3	5	B+		5 (90-100%)
65	D	B		B	B	D		2	4	B, B-		5 (80-89%)
55	E	C	4***	C	C	E		1	3	C+		4 (70-79%)
45	F	D		D	D				2	D		3 (50-69%)
35	FF	E		E	E				1	E		2 (40-49%)
25	G, GG, H	F, FF, G, GG, H		F, G						F, G		1 (0-39%)

* It is recommended that the midpoint of the NSC percentage range be used when calculating the AS, as the results of the above qualifications (excluding the NCV Fundamentals) are reported as either a symbol or numeric value. The range of Subject % exceeds the 100% mark to allow for inclusion of the A Level and IB HL as both qualifications are considered to be at a higher level than the NSC.

** As the Fundamental subjects are considered to be at the same level as the NSC, use the actual percentage obtained for Language and Mathematics/Mathematical Literacy. For the four Vocational Subjects use the values in the relevant column of the table above.

*** A symbol 4 obtained for a NSSC Higher Level / HIGCSE subject is regarded as a pass mark in the equivalent Ordinary or IGCSE level subject except for a First Language subject which becomes a 2nd language pass if another language is also passed (From: <https://mb.usaf.ac.za/paragraph-15/>).

Key:

NSC - National Senior Certificate

O-Level - Ordinary level

Senior Cert HG - Senior Certificate Higher Grade

AS - Advanced Subsidiary

Senior Cert SG - Senior Certificate Standard Grade

A-Level - Advanced level

HIGCSE - Higher International Graduate Certificate of Secondary Education

IB HL - International Baccalaureate Schools (Higher Levels)

IGCSE - International Graduate Certificate of Secondary Education

IB SL - International Baccalaureate Schools (Standard Levels)

NSSC HL - Namibian Senior Secondary Certificate Higher Levels

KCSE - Kenyan Certificate of Secondary Education

NSSC OL - Namibian Senior Secondary Certificate Ordinary Levels

NC(V) 4 - National Certificate Vocational Level 4



Financial facts

- Before registering as a student, you need to determine whether you will have sufficient funds to finance your studies. Costs involved in higher education include enrolment fees, registration and tuition fees, textbooks, stationery, transport, meals, accommodation, materials and laboratory fees, sports equipment, and general living expenses.
- Nelson Mandela University offers financial assistance to full-time students in the form of bursaries, merit awards, and scholarships, for top academic achievers.
- A number of sport grants are also available for top sports performers and those who show outstanding potential.
- Admission to the university does not imply that you will be eligible for a merit award, scholarship, or bursary.
- Applications for NSFAS funding must be made directly on the NSFAS website.
- For more information on financial assistance, contact the **Financial Aid Office** on (041) 504 1111, or visit their webpage www.mandela.ac.za/finaid

Scholar Merit awards

- Scholar Merit Awards are awarded to new first-year undergraduate students who have achieved excellent academic results in their final grade 12 NSC/IEB examinations. Students must have passed Grade 12 not more than 2 years prior to their first year of study. If you passed Gr 12 the year adjacent to your first year of study, then a Previous Activity Form should be completed and submitted to Financial Aid office, North Campus before 31 March. Your registration at this University must also be your first-time registering at a Higher Education institution. The rand value of this award is determined on a sliding scale between a predetermined minimum and maximum value and is awarded to first-year students who qualify by the Financial Aid Office.

Your Applicant Score (AS) is calculated as follows:

- For applicants with seven or more Grade 12 subjects, your AS is calculated by adding the percentages for your six best subjects. This gives a score out of 600. Life Orientation (LO) is not included in your AS calculations for applicants from quintiles 4 and 5 schools.
- For those applicants from quintile 1, 2 or 3 school* who attain 50% or higher for Life Orientation, 7 points may be added to your score out of 600 to arrive at your final AS.

The rand value of each award is determined on a sliding scale of AS scores according to the table below.

Applicant Score (AS)	Amount
Band 1: 500 and above	R 16 500*
Band 2: 470 – 499	R 12 500*
Band 3: 410 – 469	R 8 500*

Disclaimer: "The university reserves the right to amend the award values and policy with regards to the bursary and may in its sole discretion; decide to implement such amendments retrospectively". T's & C's apply.

For more information contact the **Financial Aid Office** on **041 504 1111**

School Leadership awards

School Leadership Awards are granted to head prefects (Head Boy/Head Girl), or Learner Representative Council President (in cases of no Head Prefects) and who meet the criteria for a Scholar Merit Bursary, qualifies for the School Leadership award of R4200 in addition to the Scholar Merit Bursary. Documentary proof of your Grade 12 results, including a letter from your school verifying your leadership role must be submitted to the Financial Aid office on North Campus as soon as possible. The last day for submission of these documents is 31 March annually. Students who were Head Prefects (or Learner Council Presidents) but do not qualify for a Scholar Merit Bursary, nevertheless, qualifies for a School Leadership Award of R4200.

Disclaimer: "The university reserves the right to amend the award value and policy with regards to the bursary and may in its sole discretion; decide to implement such amendments retrospectively". Student merit bursaries

Student merit bursaries

Returning undergraduate students may qualify for merit bursaries based on their final results in the previous year of study. Students must have passed all their modules at the first attempt. The rand value of which is determined on a sliding scale. These bursaries are available to South African as well as international students. Students must have also achieved a Weighted Average Academic Performance which is determined per faculty, and registered for a minimum relative course weight of at least 0.80 (or 96 credits)

Faculty of Business and Economic Science – 75%

Faculty of EBET – 70%

Faculty of Education – 75%

Faculty of Health Sciences – 70%

Faculty of Humanities – 75%

Faculty of Law – 70%

Faculty of Science – 70%

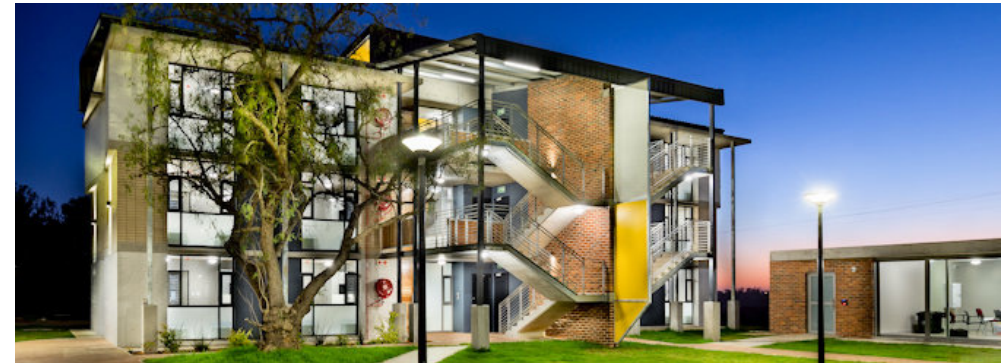
NB: Exempted courses are not included in the minimum relative weight or credit value for merit award purposes. The value of the bursary is not a fixed amount and is determined in accordance with the available budget. These awards are only for undergraduate studies. Students intending to register for Postgraduate Diplomas or Honours studies must apply for those bursaries on the prescribed form before 1 November of the year preceding postgraduate studies.

Disclaimer: "The university reserves the right to amend the award values and policy with regards to the bursary and may in its sole discretion; decide to implement such amendments retrospectively". T's & C's apply.

Sport bursaries

Madibaz Sport offers sport bursaries of varying amounts to sport performers who have demonstrated the ability to play sport at a high level of competition. Bursary application forms can be obtained from Madibaz Sport by e-mail: madibazsport@mandela.ac.za or by calling (041) 504 2165.

Disclaimer: "The university reserves the right to amend the award values and policy with regards to the bursary and may in its sole discretion; decide to implement such amendments retrospectively".



Accommodation

On-campus

The university provides various on-campus accommodation options. These include the residences on the university's Summerstrand and George campuses, and the Student Villages in Summerstrand, which consist of self-catering units for senior students. As accommodation is limited, early application is essential. Prospective students should note that being offered a place in an academic programme does not mean they have also been accepted into an on-campus residence. The closing date for residence applications is: **30 September 2026**. No late applications will be considered.

For more information contact: (041) 504 3690/1415/1416 | resadmissions@mandela.ac.za | www.mandela.ac.za/studenthousing

Off-campus

Some students prefer living off-campus. Off-campus accommodation options include renting flats and houses or boarding at nearby private residences. The university offers a service to assist students in finding suitable off-campus accommodation. For more information on off-campus accommodation please contact **(041) 504 2921** or e-mail: offcampus.accomodation@mandela.ac.za

Applying for residence accommodation

- Apply online (<http://studenthousing.mandela.ac.za/Apply-for-admission>);
- Please note that indicating that you require accommodation does not guarantee placement in any of the university's on-campus accommodation options.
- A selection process has to take place and priority will be given to applicants who have obtained excellent academic results.
- No student will be admitted to residence until she/he has been academically admitted to a university programme, or before the appropriate fees have been paid.
- Also note that residence accommodation is limited, and preference will be given to applications received before the end of September.
- Please submit a residence accommodation form together with proof of your current residential/home or postal address via e-mail (resadmissions@mandela.ac.za), fax (041- 504 9765) or post (Residence Accommodation, PO Box 77000, Nelson Mandela University, Gqeberha, 6031).

International students

Nelson Mandela University's International Office (MIO) provides information and assistance to prospective and current international students. The institution is home to more than 791 international students from over 46 countries around the world. Most international students are from the African continent. Information on study programmes, fees, accommodation, and study permit requirements can be obtained from this office. Please contact them on +27 (0)41 504 2161 or e-mail: international@mandela.ac.za or visit their website (www.mandela.ac.za/international). **The closing date for applications by international students is 30 September 2026.**

Study Abroad

The International Office also provides study abroad opportunities to South African second- to final year students registered at Nelson Mandela University. Opportunities are provided to students to enroll for one semester abroad at a partner university. For more information contact international@mandela.ac.za or visit the Office for International Education.



Students with Disabilities

Nelson Mandela University offers concessions to students with permanent, and/or temporary disabilities, and/or disorders who may not be able to reflect their true ability under standard formal assessment (test and examinations) conditions. It is the aim of the university to assist students to reach their full academic potential. This is done by providing assistance and/or concessions which ensures equitable, reasonable, and appropriate access to higher education. All of which are based on the national standards applicable to tertiary education in South Africa, whilst not prejudicing deserving students, their peers, and/or any academic programme.

For more information on accessibility and how your particular disability may be accommodated, you are advised to contact **the Universal Accessibility & Disability Services (UADS)**, on 041-504 2313, or e-mail: disability@mandela.ac.za as early as possible. Early enquiries during the year preceding application are encouraged, so that requests may be considered prior to admission. 2313 or E-mail: disability@mandela.ac.za for further information.



Co-Curricular Record

While in university, it is important to not only achieve your goals related to your academics, but also to develop yourself in ways that will help you be a potential employee that employers want to hire. You are encouraged to develop yourself in 16 key areas believed to be attractive traits to employers, both locally and globally. Whether it be through campus leadership positions like First Year Success Buddies, BtC and Res Mentors or involvement in experiences like societies or community involvement sites, co-curricular activities provide opportunities in which you can develop these key skills. Additionally, you can receive formal recognition for the learning achieved through these out-of-the classroom activities with the Co-Curricular Record (CCR). The CCR serves as a companion to your Academic Record and formally acknowledges your participation in approved cocurricular activities, including the learning outcomes achieved through participation. It is never too early to start developing yourself for your future career.

The University Shop

The University Shop is a project of the Alumni Association and was established as a brand development tool. By wearing Nelson Mandela University branded items, students, staff, alumni, and friends can show their affinity and support for the University. You can visit the one-stop shop for all University branded clothing, bags, folders, and stationery in person, or shop online. **For more information contact:** 041 – 504 4371, or E-mail: shop@mandela.ac.za, or visit their website: <https://onlineshop.mandela.ac.za/>



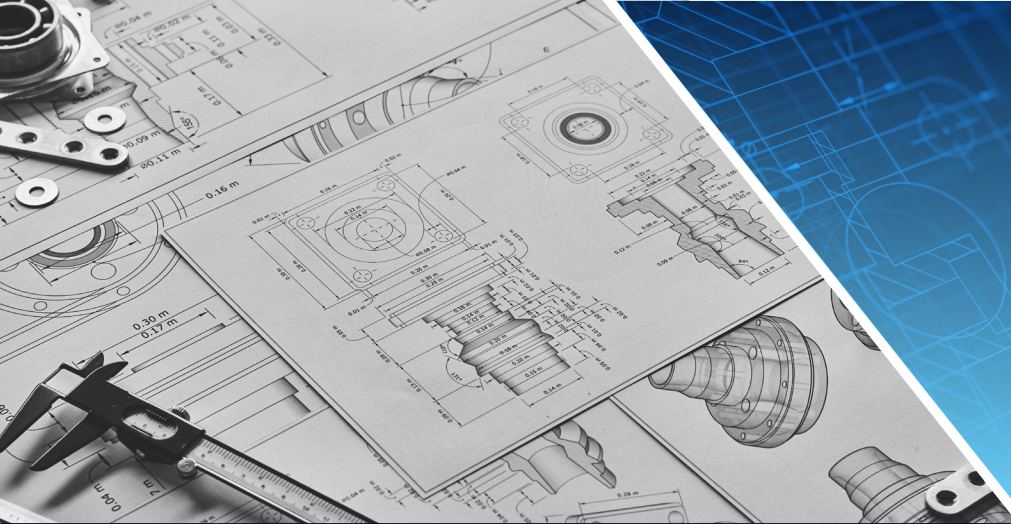
Language of Teaching and Learning

While Nelson Mandela University is committed to multilingualism, the predominant language of teaching and learning at the University is English. The statutory language requirements can be met by obtaining a minimum rating of 3 (40 - 49%) or higher in English, Afrikaans or isiXhosa as a home or first additional language. Some qualifications may require a higher pass mark for language(s) than what is indicated here. Please refer to the subject requirements of the qualification you intend applying for, before completing your online application form to ensure that you meet the direct admission & subject requirements.

Virtual Tours

Explore Nelson Mandela University from anywhere around the world with our immersive virtual tours! Whether you're planning a visit, researching our facilities, or simply curious to see what we offer, our virtual tours provide a convenient and engaging way to experience studying at our institution. Navigate through different areas, zoom in on details, and explore campus life, all at your own pace. **For more information:** <https://www.mandela.ac.za/About-us/Virtual-tours>





Faculty of Engineering, the Built Environment and Technology



SCHOOL OF ENGINEERING

Qualification	Programme Overview	Delivery mode & duration of study	Minimum Admission Requirements				Career Opportunities
			AS for Maths	AS for	AS for Maths Literacy	Subject Requirements	
Higher Certificate (HCert)							
HCert (Mechatronic Engineering)	<p>This programme provides an introduction to Mechatronics and Automation. The course includes carefully selected applied Mathematics, Science and Engineering content to fast-track learning to the required level.</p> <p>The purpose of this programme is to equip students with the necessary skills to function in a supporting role to engineering teams in the automation sector comprising artisans, technicians, technologists, and engineers.</p> <p>Successful candidates meeting prescribed criteria, may apply for admission to BEngTech, BEng and other degrees offered at the university.</p>	Full-time 1 year	330	330	–	<ul style="list-style-type: none"> • Minimum statutory NSC requirements for higher certificate entry must be met. • Mathematics or Technical Mathematics – 50%. • Physical Sciences or Technical Science – 50%. 	<p>Successful candidates can pursue a multitude of career opportunities within the automated manufacturing environment and can function in a supporting role to an engineering team comprising artisans, technicians, technologists, and engineers.</p> <p>There is a rapidly rising demand for knowledge and skills in this field emanating specifically from the development of technology (especially the integration of computer based control, data acquisition and monitoring) as applied to automated processes and the inadequate levels of support staff and artisans with these highly developed technological skills.</p>
HCert (Renewable Energy Engineering)	<p>This programme provides an introduction to Sustainable Energy and Renewable Energy Technologies. The course includes carefully selected applied Mathematics, Science and Engineering content to fast-track learning to the required level.</p> <p>The purpose of this programme is to equip students with the necessary skills to function in a supporting role to an engineering team in the renewable energy sector comprising artisans, technicians, technologists, and engineers.</p>	Full-time 1 year	330	330	–	<ul style="list-style-type: none"> • Minimum statutory NSC requirement for higher certificate entry must be met. • Mathematics or Technical Mathematics – 50%. • Physical Sciences or Technical Science – 50%. 	<p>Successful candidates can pursue a multitude of career opportunities within the renewable energy environment and can function in a supporting role to an engineering team comprising artisans, technicians, technologists, and engineers.</p> <p>There is a rapidly rising demand for knowledge and skills in this field emanating specifically from the development of renewable energy technology, and the need for adequate levels of support staff with these highly developed technological skills.</p>

Qualification	Programme Overview	Delivery mode & duration of study	Minimum Admission Requirements				Career Opportunities
			AS for Maths	AS for Technical Maths	AS for Maths Literacy	Subject Requirements	
HCert (Renewable Energy Engineering) (continued)	Successful candidates meeting prescribed criteria, may apply for admission to BEngTech, BEng and other degrees offered at the university.						
Diploma (Dip)							
Dip (Operations Management)	The purpose of this programme is to equip students with the necessary knowledge, skills, understanding, and abilities required to become competent operations managers. They will be able to plan and manage an organisation's resources and processes which typically represents a significant portion of an organisation's cost and assets. Included in the tasks of operations managers are the essential components of quality enhancement and assurance, supply chain management, increased productivity, cost reduction, and flexibility improvements.	Part-time 4 years	310	310	325	<ul style="list-style-type: none"> • Minimum statutory NSC requirements for diploma entry must be met. • Mathematics or Technical Mathematics – 40%, or Mathematical Literacy – 60%. • Must be in full-time employment in a related field. • Comprehensive curriculum vitae (CV) must be submitted with your application form. • Admission is subject to departmental selection. 	Career opportunities include production planners, operations managers, supervisors, team leaders, work study practitioners, quality practitioners, operations analysts, logistics and stores managers.
Advanced Diploma (AdvDip)							
AdvDip (Quality)	<p>The purpose of this programme is to equip students with knowledge and advanced skills to be able to determine and manage the effectiveness of quality management systems, appraise the current systems and processes, identify problem areas, and possess the skills to assist in the minimisation of the problem areas identified.</p> <p>This qualification offers an intensive, focused and applied specialisation which meets the need of a specific niche in the labour market.</p>	Part-time 2 years	–	–	–	<ul style="list-style-type: none"> • Students must have a 65% average for any relevant National Diploma, Diploma or Degree at the discretion of the Head of Department, or 60% average, with two years relevant post diploma/degree working experience. • Mathematics I or equivalent at an NQF Level 5. • Employment in a relevant field is required for the project module. • Applicants from non-English speaking countries are required to submit proof of English proficiency before registration. The TOEFL or IELTS tests, available in most countries, are acceptable proof. The minimum TOEFL score required is 230 on the computer-based test, or 570 on the paper-based test. 	<p>Globally, the possible positions of individuals with this type of qualification include quality practitioners, managers, supervisors and foremen. The study of quality involves the effective application and management of resources including, but not limited to, human, capital, and material resources.</p> <p>Quality management for manufacturing operations is a key fundamental to the competitive edge of the Eastern Cape region and is a major contributor to wealth creation and employment.</p>

1. Applicant Score (AS) for Mathematics: Overall score calculated for applicants who have taken Mathematics;
2. Applicant Score (AS) for Technical Mathematics: Overall score calculated for applicants who have taken Technical Mathematics;
3. Applicant Score (AS) for Mathematical Literacy: Overall score calculated for applicants who have taken Mathematical Literacy.

Qualification	Programme Overview	Delivery mode & duration of study	Minimum Admission Requirements				Career Opportunities
			AS for Maths	AS for Technical Maths	AS for Maths Literacy	Subject Requirements	
AdvDip (Quality) (continued)	<p>This programme is suitable for continuing professional development through the inculcation of a deep and systematic understanding of current thinking, practice, theory, and methodology, in the area of quality management and systems.</p>					<ul style="list-style-type: none"> A minimum of a 6.0 on the IELTS is acceptable. If this documentation is not provided before registration, you will be required to undertake an evaluation by the director of the Nelson Mandela University English Language Skills Programme, and depending upon your performance, you may then be required to register for and complete the English Language Skills Programme. Other and non-South African qualifications will be considered based on SAQA reports and merit and may require the submission of curricula and learning material. These applicants may be required to complete additional modules to enhance their preparation for this qualification. 	<p>Included in the tasks of quality managers are the essential components of quality enhancement and assurance, supply chain management, increased productivity, cost reduction and flexibility improvements.</p>
AdvDip (Operations Management)	<p>The study of Operations Management fills a strategic role in the operational efficiency of manufacturing, as well as the service industry. Included in the tasks of operations managers are the essential components of quality enhancement and assurance, supply chain management, increased productivity, cost reduction, and flexibility improvements.</p> <p>Operations managers could be required to solve broadly defined operations related problems, apply analytical techniques to operations related procedures, processes, systems and methodologies, design and apply operations related control systems, understand the impact of operations management, use appropriate techniques, resources, and modern operations tools, including IT, for the solution of broadly defined operations. Operations Managers must also be able to communicate effectively and demonstrate the ability to work in a team.</p>	Part-time 2 years	–	–	–	<ul style="list-style-type: none"> Students must have a 65% average for any relevant National Diploma, Diploma or Degree qualification, at the discretion of the Head of Department, or 60% average with at least two years relevant post diploma/degree working experience. Mathematics I or equivalent at NQF Level 5. Employment in a relevant field is required for the project modules. Applicants from non-English speaking countries are required to submit proof of English proficiency before registration. The TOEFL or IELTS tests, available in most countries, are acceptable proof. The minimum TOEFL score required is 230 on the computer-based test, or 570 on the paper-based test. A minimum of a 6.0 on the IELTS is acceptable. 	<p>Globally, the possible positions of individuals with this type of qualification include production planners, operations managers, supervisors, a foreman, work study practitioners, quality practitioners and operations analysts.</p>

Qualification	Programme Overview	Delivery mode & duration of study	Minimum Admission Requirements				Career Opportunities
			AS for Maths	AS for Technical Maths	AS for Maths Literacy	Subject Requirements	
AdvDip (Operations Management) (continued)	<p>The Advanced Diploma in Operations Management is designed to build on the knowledge and skills obtained in the Diploma (Operations Management).</p> <p>This course will provide a deeper level of knowledge, understanding, and skills required towards becoming primarily a competent, and efficient operations manager and employee. Applicants with relevant qualifications and experience from other engineering and science disciplines may also apply.</p>					<ul style="list-style-type: none"> If this documentation is not provided before registration, you will be required to undertake an evaluation by the director of the Nelson Mandela University English Language Skills Programme, and depending upon your performance, you may then be required to register for and complete the English Language Skills Programme. Other and non-South African qualifications will be considered based on SAQA reports and merit and may require the submission of curricula and learning material. These applicants may be required to complete additional modules to enhance their preparation for this qualification. 	
Bachelor of Engineering (BEng)							
BEng (Mechatronics)	<p>Mechatronic Engineering is a multidisciplinary branch of engineering that includes a combination of precision mechanical engineering, electronics and computer systems. A typical mechatronic system is characterised by close integration of computer controllers, mechanical components, electrical sensors, mechanical and electrical actuators and software into products and systems useful to man and society.</p> <p>In order to combine all these elements in an optimal way (cost-effective, flexible, and with the highest performance), mechatronic engineers must have insight in each of these disciplines. Mechatronic Engineering is a key driver of the Fourth Industrial Revolution.</p>	Full-time 4 years	410	–	–	<ul style="list-style-type: none"> Minimum statutory NSC requirements for degree entry must be met. Mathematics – 60%. Physical Sciences – 65%. <p>Alternatively: A Higher Certificate in Mechatronic Engineering or Higher Certificate in Renewable Energy Engineering with an average of 75% or above, and a minimum of 75% for Mathematics may be considered. No credits will be given for any modules completed as part of the Higher Certificate in Mechatronics Engineering qualification.</p> <p>Recommended NSC/IEB Subjects: Engineering Graphics & Design and/or Information Technology.</p>	Mechatronic Engineers are the pioneers of the Fourth Industrial Revolution and play a key role in the design, development, manufacture and operation of a variety of products – from video players and automatic cameras, to robots and fully automated plants for manufacturing, packaging, and the process industries.

1. Applicant Score (AS) for Mathematics: Overall score calculated for applicants who have taken Mathematics;
2. Applicant Score (AS) for Technical Mathematics: Overall score calculated for applicants who have taken Technical Mathematics;
3. Applicant Score (AS) for Mathematical Literacy: Overall score calculated for applicants who have taken Mathematical Literacy.

Qualification	Programme Overview	Delivery mode & duration of study	Minimum Admission Requirements				Career Opportunities
			AS for Maths	AS for Technical Maths	AS for Maths Literacy	Subject Requirements	
BEng (Mechatronics) (continued)	The programme provides students with a thorough grounding in mathematics, basic sciences, engineering sciences, engineering modelling and engineering design together with the abilities to enable application in fields of emerging knowledge.						
Bachelor of Engineering Technology (BEngTech)							
BEngTech (Electrical Engineering)	<p>Electrical Engineering is the study of the behaviour of electrical, electronic, digital, and electromechanical systems.</p> <p>Electrical Engineering Technologists are responsible for the design, development, manufacturing, testing and maintenance of electrical, electronic, and digital infrastructure. This includes, but is not limited to, the various forms of power generation, transmission, and distribution systems, control systems, computer systems, data and voice communication systems, automated robotic systems, and medical technologies.</p> <p>The Electrical Engineering technologist assists in creating wealth and improving people's quality of life.</p>	Full-time 3 years	370	370	–	<ul style="list-style-type: none"> • Minimum statutory NSC requirements for degree entry must be met. • Mathematics or Technical Mathematics – 60%. • Physical Sciences or Technical Science – 50%. <p>Alternatively: A Higher Certificate in Mechatronics Engineering, or Higher Certificate in Renewable Energy Engineering as awarded by Nelson Mandela University, with an average of 60% or above and a minimum of 60% for Mathematics.</p>	<p>Electrical Engineering Technologists are high in demand both locally and internationally.</p> <p>Typical sectors of opportunities for employment include power generation, transmission and distribution corporations, as well as government institutions developing infrastructure, computer-technology corporations, manufacturing plants, parastatal and private communication companies as well as process-control and chemical plants.</p> <p>Graduates are not limited to formal employment sectors – they also make good entrepreneurs. Apart from this, they may also find challenging opportunities in teaching and/or research.</p>

Qualification	Programme Overview	Delivery mode & duration of study	Minimum Admission Requirements				Career Opportunities
			AS for Maths	AS for Technical Maths	AS for Maths Literacy	Subject Requirements	
BEngTech (Industrial Engineering)	<p>Industrial Engineering Technologists develop concepts, designs and systems for manufacturing processes and services. They work with many different specialists such as material scientists, mechanical and electrical engineers, manufacturing, and services team leaders, marketers, and accountants to develop new efficient processes, quality assurance protocols and systems.</p> <p>Industrial engineering technologists are tasked to ensure that manufacturing plant or services rendered are optimally designed for customer satisfaction in terms of quality as well as being internationally competitive.</p>	Full-time 3 years	370	370	–	<ul style="list-style-type: none"> • Minimum statutory NSC requirements for degree entry must be met. • Mathematics or Technical Mathematics – 60%. • Physical Sciences or Technical Science – 50%. <p>Alternatively: A Higher Certificate in Mechatronics Engineering, or Higher Certificate in Renewable Energy Engineering as awarded by Nelson Mandela University, with an average of 60% or above and a minimum of 60% for Mathematics.</p>	Industrial Engineering Technologists are high in demand in automated manufacturing and assembly plants as well as in large scale service industries.
BEngTech (Mechanical Engineering)	<p>Mechanical Engineering focuses on the design, analyses, manufacturing, and maintenance of mechanical systems.</p> <p>Mechanical Engineering Technologists create, design, construct, and install mechanical components, structures, devices, and products that make modern life possible and more comfortable. Product development requires the optimisation and improvement of a product or its manufacturing process, for efficiency and cost, whilst also improving the international comparability of the manufacturer.</p>	Full-time 3 years	370	370	–	<ul style="list-style-type: none"> • Minimum statutory NSC requirements for degree entry must be met. • Mathematics or Technical Mathematics - 60%. • Physical Sciences or Technical Science – 50%. <p>Alternatively: A Higher Certificate in Mechatronics Engineering, or Higher Certificate in Renewable Energy Engineering as awarded by Nelson Mandela University, with an average of 60% or above and a minimum of 60% for Mathematics.</p>	<p>Mechanical Engineering Technologists are high in demand locally and internationally.</p> <p>Typical employment sectors include power- and energy generation, automotive corporations, government institutions, mining and exploration, design, service, and manufacturing plants.</p> <p>Graduates are not limited to formal employment sectors – they also make excellent entrepreneurs. Apart from this, they may also find challenging opportunities in teaching and/or research.</p>

1. Applicant Score (AS) for Mathematics: Overall score calculated for applicants who have taken Mathematics;
2. Applicant Score (AS) for Technical Mathematics: Overall score calculated for applicants who have taken Technical Mathematics;
3. Applicant Score (AS) for Mathematical Literacy: Overall score calculated for applicants who have taken Mathematical Literacy.

Qualification	Programme Overview	Delivery mode & duration of study	Minimum Admission Requirements				Career Opportunities
			AS for Maths	AS for Technical Maths	AS for Maths Literacy	Subject Requirements	
BEngTech (Marine Engineering)	<p>Marine Engineering is the discipline of applying engineering sciences (including mechanical, electrical, electronics) and computer science, to the development, design, operation, and maintenance of ships and related watercraft, including propulsion and on-board systems.</p> <p>The Marine Engineering discipline integrates and applies high levels of engineering science to the area of naval architecture and marine structures. Naval architecture broadly refers to the design of ships and marine structures.</p>	Full-time 3 years	370	370	–	<ul style="list-style-type: none"> • Minimum statutory NSC requirements for degree entry must be met. • Mathematics or Technical Mathematics – 60%. • Physical Sciences or Technical Science – 50%. <p>Alternatively: A Higher Certificate in Mechatronics Engineering, or Higher Certificate in Renewable Energy Engineering as awarded by Nelson Mandela University, with an average of 60% or above and a minimum of 60% for Mathematics.</p>	<p>After completing the degree, graduates can consider three career options:</p> <p>A Naval Architect, who is involved in the design, modification and development of ships, boats, vessels, and offshore platforms.</p> <p>A Shore-based Marine Engineer, who specialises in the systems engineering (design/maintenance/ construction) of boats, ships, oil rigs and any other marine vessels or structures, as well as with oceanographic engineering.</p> <p>An Engine Officer (Seafarer/ Mariner), who is responsible for the technical management and the operation of a ship, up to the level of Chief Engineer.</p> <p>In Marine Engineering, the “Chief Engineer” is in charge of the engineering department on a vessel. They are responsible for all operations and maintenance that has to do with all the engineering equipment and the technical facilities throughout the entire ship.</p>

SCHOOL OF ARCHITECTURE

Qualification	Programme Overview	Delivery mode & duration of study	Minimum Admission Requirements				Career Opportunities
			AS for Maths	AS for	AS for Maths Literacy	Subject Requirements	
Diploma (Dip)							
Dip (Architectural Technology)	<p>The programme aims to produce architectural technologists who will be competent to design at the basic level and, with the aid of the latest technological equipment, perform the technical aspects of architectural practice at the intermediate level.</p> <p>Construction technology, design and documentation are the main areas of focus. However, because architecture by its very nature is design-orientated and because technologists are allowed to practice independently, architectural design and design theory also forms part of the programme.</p>	Full-time 3 years	330	330	345	<ul style="list-style-type: none"> Minimum statutory NSC requirements for diploma entry must be met. Mathematics or Technical Mathematics – 45%, or Mathematical Literacy – 60%. <p>Qualifying applicants will be required to prepare a prescribed portfolio and attend an interview. Some applicants may be required to attend a three-week "preparation to architectural technology" qualification course before registration.</p> <p>For more information on the creative portfolio and interview please phone (041) 504 9928.</p>	<p>The field of expertise of architectural technologists is mainly construction methods, materials, the preparation of drawings and graphic presentations and the design of small buildings such as houses.</p> <p>Employment opportunities exist with architectural practices, government institutions and property developers, or as self-employed consultants.</p> <p>The programme leads to registration as professional architectural technologists with the South African Council for the Architectural Profession who will require a two-year "candidacy" period followed by a qualifying exam. They can also follow postgraduate studies in related fields such as town planning.</p>

1. Applicant Score (AS) for Mathematics: Overall score calculated for applicants who have taken Mathematics;
 2. Applicant Score (AS) for Technical Mathematics: Overall score calculated for applicants who have taken Technical Mathematics;
 3. Applicant Score (AS) for Mathematical Literacy: Overall score calculated for applicants who have taken Mathematical Literacy.

Qualification	Programme Overview	Delivery mode & duration of study	Minimum Admission Requirements				Career Opportunities
			AS for Maths	AS for Technical Maths	AS for Maths Literacy	Subject Requirements	
Dip (Interior Design)	<p>The programme aims to produce interior designers who will be competent to design the working spaces or living environments of people so that they are more efficient, comfortable, and aesthetically pleasing. The focus is on the re-use of existing buildings or installations in new buildings of a variety of types but most particularly the commercial field.</p> <p>Design exercises are augmented by the study of interior design theory, history of interior design, soft furnishings, marketing, retail design, shop fitting, space planning and related construction technologies and building services. Design trends across the spectrum of design disciplines and the latest developments in design thinking are covered in detail.</p>	Full-time 3 years	315	315	330	<ul style="list-style-type: none"> Minimum statutory NSC requirements for diploma entry must be met. Mathematics or Technical Mathematics – 30%, or Mathematical Literacy – 45%. Admission is subject to departmental selection. Selection is based on the submission of a creative portfolio of work, comprising drawings, sketches and other creative or technical projects, as outlined by the Department as well as an interview with the department's staff to discuss your creative portfolio. International applications who are unable to present themselves for an interview must courier their portfolio or send an electronic copy with a covering letter to the department. <p>Recommended NSC/IEB Subjects:</p> <ul style="list-style-type: none"> Visual Arts Design <p>Neither of these two subjects are prerequisites for admission.</p> <p>For more information on the creative portfolio and interview please phone (041) 504 9928.</p>	Employment opportunities for interior designers exist with interior design firms, architectural practices, furniture manufacturers and suppliers and property developers, or as self-employed consultants.
Advanced Diploma (AdvDip)							
Advanced Diploma (Architectural Design)	This design-focused course is aimed at students who wish to either transfer to the architectural programme by continuing with the one-year BAS Honours degree, and one-year MArch (Professional) degree, or who intend to (with some experience) practice independently as professional senior architectural technologists.	Full-time 1 year	–	–	–	<ul style="list-style-type: none"> Applicants must have graduated with a Diploma in Architectural Technology with an average of 65% for both Architectural Design and Studio Work 1, 2, 3, 65% for both theory of architecture 1, 2 and Construction and Detailing 1, 2, 3. 	The field of expertise of architectural technologists is mainly construction methods, materials, the preparation of drawings and graphic presentations and the design of small and intermediate buildings.

Qualification	Programme Overview	Delivery mode & duration of study	Minimum Admission Requirements				Career Opportunities
			AS for Maths	AS for Technical Maths	AS for Maths Literacy	Subject Requirements	
Advanced Diploma (Architectural Design) (continued)	<p>Upon completion of this qualification, students can register with the South African Council for Architectural Profession (SACAP) as a Candidate Professional Senior Architectural Technologists.</p> <p>The design component of the course is run concurrently with the BAS Design III class. Those who achieve the required 60% in Design may then register for the BAS Honours degree programme.</p>					<ul style="list-style-type: none"> Applicants whose marks do not meet the subminimum admission requirements listed above must submit a portfolio of professional work completed in practice over two to three years for assessment by the admissions committee composed of the School Director and both Departmental Heads. Applicants who have completed their Diploma in Architectural Technology at another SACAP accredited institution will be required to submit their full academic record and a portfolio for assessment by the admissions committee. Applicants who are coming from a Professional Practice environment must have obtain a Diploma in Architectural Technology at any SACAP accredited Institution and will be required to submit their full academic record and submit a portfolio of professional work completed in practice over two to three years for assessment by the admissions committee. 	<p>Employment opportunities exist with architectural practices, government institutions and property developers, or as self-employed consultants.</p> <p>The programme leads to registration as a professional senior architectural technologist with the South African Council for the Architectural Profession who will require a two year 'candidacy' period followed by a qualifying exam. They can also follow postgraduate studies in Architectural Technology or related fields such as town planning.</p>

1. Applicant Score (AS) for Mathematics: Overall score calculated for applicants who have taken Mathematics;
 2. Applicant Score (AS) for Technical Mathematics: Overall score calculated for applicants who have taken Technical Mathematics;
 3. Applicant Score (AS) for Mathematical Literacy: Overall score calculated for applicants who have taken Mathematical Literacy.

Qualification	Programme Overview	Delivery mode & duration of study	Minimum Admission Requirements				Career Opportunities
			AS for Maths	AS for Technical Maths	AS for Maths Literacy	Subject Requirements	
Advanced Diploma (Architectural Technology)	<p>This qualification aims to produce senior architectural technologists who will be competent to design at the intermediate level, and with the aid of the latest electronic tools, perform and control the technical aspects of architectural practice at an advanced level.</p> <p>While design forms an integral part of the course the focus remains on the practical/ technological aspects of architectural practice. This includes an emphasis on “green design” and the particular needs of developmental communities.</p>	Full-time 1 year	–	–	–	<p>Applicants who hold a Dip (Architectural Technology) must have:</p> <ul style="list-style-type: none"> • An average of 60% for Architectural Design III (final mark) and, 60% as the average of the final marks for Studio Work I, II and III, and 60% for Construction and Detailing I, II and III. • Applicants whose marks do not meet the subminimum admission requirements listed above must submit a portfolio of professional work completed in practice over two to three years for assessment by the Department of Architectural Technology and Interior Design admissions committee. • Applicants who have completed their Diploma in Architectural Technology at another SACAP accredited institution will be required to submit their full academic record and a portfolio for assessment by the departmental admissions committee. • Applicants who are coming from a Professional Practice environment must have obtain a Diploma in Architectural Technology at any SACAP accredited Institution and will be required to submit their full academic record and submit a portfolio of professional work completed in practice over two to three years for assessment by the Department of Architectural Technology and Interior Design. 	<p>The field of expertise of architectural technologists is mainly construction methods, materials, the preparation of drawings and graphic presentations and the design of small and intermediate buildings.</p> <p>The programme leads to registration as professional senior architectural technologists with the South African Council for the Architectural Profession (SACAP) who will require a two-year ‘candidacy’ period followed by a qualifying exam.</p> <p>As such they can work in architects’ offices, the public sector or with property developers. They may also choose to practice independently.</p>

Qualification	Programme Overview	Delivery mode & duration of study	Minimum Admission Requirements				Career Opportunities
			AS for Maths	AS for Technical Maths	AS for Maths Literacy	Subject Requirements	
Advanced Diploma (Interior Design)	This programme aims to prepare senior interior designers for larger projects. This design-focused course aims to produce senior interior designers who can, with some experience, practice independently as part of the team of consultants responsible for major new and adaptive re-use projects. A four-year qualification is the international pre-requisite for practice in interior design.	Full-time 1 year	–	–	–	<p>Applicants who hold a Dip (Interior Design) from Nelson Mandela University:</p> <ul style="list-style-type: none"> • A final mark of at least 65% for each of the following modules: Interior Design III, Design Technology III, and Contemporary Developments III. The lowest mark for any of the above-mentioned modules must be 60%. • Applicants who don't qualify in terms of the above point are required to write an entrance examination set and evaluated by the Department of Architecture and Interior Design after the November portfolio exams. • Those applicants who have completed their Diploma in Interior Design at another institution will be required to submit their full academic record and a portfolio for assessment by the Departmental Admissions Committee. The lowest mark for any of the above-mentioned modules must be 60%. • If the applicant did not get a minimum of 65% average for the Design, Technology or Theory modules, the applicant must in addition prepare a submission for the Department of Architectural Technology & Interior Design, the requirements of which are available from the department. Selection is based on an applicant's detailed design ability, academic record and work experience. 	Employment opportunities exist with interior design firms, architectural practices, furniture manufacturers and suppliers and property developers, or as self-employed consultants.

1. Applicant Score (AS) for Mathematics: Overall score calculated for applicants who have taken Mathematics;
2. Applicant Score (AS) for Technical Mathematics: Overall score calculated for applicants who have taken Technical Mathematics;
3. Applicant Score (AS) for Mathematical Literacy: Overall score calculated for applicants who have taken Mathematical Literacy.

Qualification	Programme Overview	Delivery mode & duration of study	Minimum Admission Requirements				Career Opportunities
			AS for Maths	AS for Technical Maths	AS for Maths Literacy	Subject Requirements	
Bachelor of Architectural Studies (BAS)							
BAS (Architecture)	<p>The Department of Architecture's professional programme is structured as follows: a three-year Bachelor's degree in Architectural Studies (BAS), followed by a one-year BAS (Honours) degree and a one-year MArch (Prof) degree in Architecture thereafter.</p> <p>Once you have completed your BAS degree, should you decide not to proceed further, and complying with the South African Council for the Architectural Profession's (SACAP) practical training and exam requirements, you can register as an architectural technologist. Should you also complete your BAS (Honours) studies and comply with the South African Council for the Architectural Profession's (SACAP) practical training and exam requirements, you can register as a senior architectural technologist.</p> <p>Only once you have completed the MArch (Professional) degree and have complied with SACAP's practical training requirements and exam requirements, will you be able to register as a professional architect.</p> <p>The Architectural programmes are SACAP (South African Council for the Architectural Profession) and CAA (Commonwealth Association of Architects) accredited.</p> <p>Please note: Prospective students will only be notified by the admissions office of the outcome of their application once they have met with the department to discuss their portfolio and interviewed for a place in the BAS degree.</p>	<p>BAS Full-time 3 years plus BAS Hons Full-time 1 year plus M.Arch (Prof) Full-time 1 year</p>	370	–	–	<ul style="list-style-type: none"> • Minimum statutory NSC requirements for degree entry must be met. • Mathematics – 55%. • Selection is based on the submission of a creative portfolio to the department, an interview with the selection committee of the department and a discussion with them about your creative portfolio. <p>For more information on the creative portfolio and interview, please contact 041 504 2719 or https://architecture.mandela.ac.za/.</p>	<p>Architects are involved in the creation of buildings in the built environment. The architect applies creativity and critical thinking skills to a range of activities related to the design and production of this environment.</p> <p>These activities include: the development of conceptual strategies that respond to an understanding of the various aspects of the project context, the drawing and modelling of design proposals that are developed from this understanding, and the production and management of technical details, contractual agreements and teams of people related to the realisation of projects as physical buildings.</p>

SCHOOL OF THE BUILT ENVIRONMENT AND CIVIL ENGINEERING

Qualification	Programme Overview	Delivery mode & duration of study	Minimum Admission Requirements				Career Opportunities
			AS for Maths	AS for Technical Maths	AS for Maths Literacy	Subject Requirements	
Higher Certificate (HCert)							
HCert (Human Settlement Development)	<p>The Higher Certificate in Human Settlement Development is designed to provide theoretical and practical knowledge so that practitioners acquire the skills and attributes to operate in the three tiers of government in matters related to Human Settlement Development.</p> <p>Please note that ALL applicants must be employed in the field of Human Settlement Development, or a related field as a practitioner to be considered for possible admission.</p>	Full-time 1 year	–	–	–	<ul style="list-style-type: none"> Minimum statutory NSC requirements for higher certificate entry must be met. Applicants must be employed at least one year in the field of Human Settlement Development, or a related field as a practitioner. 	Graduates are employed by managing organisations and developing and implementing human settlement policy, strategies, programmes, and projects in the public and private sectors.
Diploma (Dip)							
Dip (Building)	<p>The Building and Construction Industry is a dynamic industry with many opportunities for self-motivated and hardworking people. The industry is becoming more technically sophisticated and computerised industry which has resulted in a growing demand for suitably trained professionals.</p> <p>This course deals with the methods, materials and techniques used in the construction industry. Two years of this three-year programme are spent doing full-time study at the university, and one year in industry undergoing experiential learning.</p> <p>Please note: As a limited number of students can be admitted, admission is subject to selection based on academic merit. The selection is undertaken by the Department of Building and Human Settlement Development.</p>	Full-time 3 years	330	330	–	<ul style="list-style-type: none"> Minimum statutory NSC requirements for diploma entry must be met. Mathematics or Technical Mathematics – 45%. Admission is subject to departmental selection. <p>Recommended NSC/IEB Subjects:</p> <ul style="list-style-type: none"> Physical Sciences Business Economics Accounting Civil Technology 	This programme prepares diplomats for supervisory and middle management level employment in the building industry; and technical support level in the quantity surveying profession.

1. Applicant Score (AS) for Mathematics: Overall score calculated for applicants who have taken Mathematics;
2. Applicant Score (AS) for Technical Mathematics: Overall score calculated for applicants who have taken Technical Mathematics;
3. Applicant Score (AS) for Mathematical Literacy: Overall score calculated for applicants who have taken Mathematical Literacy.

Qualification	Programme Overview	Delivery mode & duration of study	Minimum Admission Requirements				Career Opportunities
			AS for Maths	AS for Technical Maths	AS for Maths Literacy	Subject Requirements	
Advanced Diploma (AdvDip)							
AdvDip (Quantity Surveying)	To provide students with more advanced knowledge in the Quantity Surveying discipline and the ability to apply that knowledge, skills, and values to make a meaningful contribution to the economy and national development by ensuring optimal utilisation of resources.	Full-time 1 year. Studies may be completed over 2 academic years in consultation with the Head of Department.	–	–	–	<ul style="list-style-type: none"> Diploma: Building (360 NQF credits), or a qualification deemed equivalent by the department and approved by the Faculty Management Committee (FMC). It is further expected of students to comply with the following additional requirements: a weighted average of 60% in the final year of study in the diploma. Students must also obtain at least 60% for the core module (Quantity Surveying) in the final year of study for entry into the Advanced Diploma programme. <p>Alternatively: Students obtaining (55% - 59%) in either of the above criteria must submit a detailed breakdown of two years' proven post-diploma experience, under the auspices of a mentor professionally registered with either the SACPCMP, SACQSP, or a relevant Built Environment Professional Body, as well as periods of employment, certified by the relevant company.</p>	<p>Employment opportunities exist mostly with construction companies, quantity surveying firms, financial institutions, local authorities, and state departments.</p> <p>Graduates could also be considered for middle management in the built environment sector and would be eligible to register as candidate quantity surveyors with the South African Council for the Quantity Surveying Profession (SACQSP).</p>
AdvDip (Construction Management)	The purpose of the qualification is to equip students with more advanced knowledge in the Construction Management discipline and the ability to apply that knowledge, skills and values to make a meaningful contribution to the economy and national development by ensuring optimal utilisation of resources.	Full-time 1 year. Studies may also be completed over 2 academic years in consultation with the Head of Department.	–	–	–	<ul style="list-style-type: none"> Diploma: Building (360 NQF credits) or a qualification deemed equivalent by the department and approved by the Faculty Management Committee (FMC). It is further expected of students to comply with the following requirements: a weighted average of 60% in the final year of study in the diploma. Students must also obtain at least 60% for the core module (Construction Management) in the final year of study in the Diploma for entry into the Advanced Diploma programme. 	<p>Employment opportunities exist mostly with private building contractors as well as with local authorities and state departments.</p> <p>Graduates could also be considered for middle management in the built environment and would be eligible to register as candidate project or construction managers with the South African Council for the Project and Construction Management Profession (SACPCMP).</p>

Qualification	Programme Overview	Delivery mode & duration of study	Minimum Admission Requirements				Career Opportunities
			AS for Maths	AS for Technical Maths	AS for Maths Literacy	Subject Requirements	
AdvDip (Construction Management) (continued)						Alternatively: <ul style="list-style-type: none"> Students obtaining (55% - 59%) in either of the above criteria must submit a detailed breakdown of two years' proven post-diploma experience, under the auspices of a mentor professionally registered with either the SACPCMP, SACQSP, or a relevant Built Environment Professional Body), as well as periods of employment, certified by the relevant company. 	
Bachelor of Science (BSc)							
BSc in Construction Economics	Students are introduced to various construction methods and materials; measuring and costing of construction elements; the influence of the economy on the industry; construction contracts; professional ethics; and general professional practice and management. Take note: The BSc (Construction Economics) is followed by the BSc Honours (Quantity Surveying) in order to develop the additional expertise needed to register as a candidate quantity surveyor with The South African Council for the Quantity Surveying Profession.	Full-time 3 years	370	–	–	<ul style="list-style-type: none"> Minimum statutory NSC requirements for degree entry must be met. Mathematics – 55%. Admission is subject to departmental selection. Recommended NSC/IEB Subjects: <ul style="list-style-type: none"> Engineering Graphics & Design Physical Science Please note: As a limited number of students can be admitted, admission is subject to departmental selection based on academic merit.	Quantity Surveyors act as financial consultants on construction and property development projects. In addition to working as consultants in private practice, quantity surveyors' skills are also utilised in areas such as civil engineering construction, facilities management, mining, government administration, advising on property finance and conducting research at Tertiary Institutions.
BSc (Construction Management)	This programme enables graduates to perform technical, supervision and operational and middle management functions in small to large construction-related enterprises, as employees or as entrepreneurs. They will obtain knowledge and skills in the areas of construction materials, methods and management, accounting, economics and the measurement and quantification of construction resources.	Full-time 3 years	370	–	–	<ul style="list-style-type: none"> Minimum NSC statutory requirements for degree entry must be met. Mathematics – 55% Recommended NSC/IEB Subjects: <ul style="list-style-type: none"> Engineering Graphics & Design Physical Science 	Graduates find employment in construction enterprises as site agents, site managers, contract managers, estimators, planners, managers, and directors.

1. Applicant Score (AS) for Mathematics: Overall score calculated for applicants who have taken Mathematics;
2. Applicant Score (AS) for Technical Mathematics: Overall score calculated for applicants who have taken Technical Mathematics;
3. Applicant Score (AS) for Mathematical Literacy: Overall score calculated for applicants who have taken Mathematical Literacy.

Qualification	Programme Overview	Delivery mode & duration of study	Minimum Admission Requirements				Career Opportunities
			AS for Maths	AS for Technical Maths	AS for Maths Literacy	Subject Requirements	
BSc (Construction Management) (continued)	Take note: After completing the BSc (Construction Management) degree graduates should enrol for either the BSc Honours (Construction Management) or BSc Honours (Construction Health & Safety Management) degree to register as a candidate professional with the South African Council for the Construction and Project Management Professions. The specialisation at Honours level will determine the path for registration as either a Construction Manager, Construction Project Manager, Construction Health & Safety Manager or Agent.						Career opportunities also exist in materials manufacture and marketing, property management, property development, facilities management, subcontracting, specialist consulting, project management, lecturing and research.
Bachelor of Human Settlement Development (BHSD)							
BHSD (Human Settlement Development)	This programme will provide students with professional skills and knowledge appropriate to a range of employment opportunities associated with human settlement development and management. Students will also be required to complete four months (one month per year) of work integrated learning (WIL) during recess period (with mentors).	Full-time 4 years Part-time 6 years	370	370	385	<ul style="list-style-type: none"> Minimum statutory NSC requirements for degree entry must be met. Mathematics or Technical Mathematics – 50%, or Mathematical Literacy – 70%. 	Graduates are employed by managing organisations and developing and implementing human settlement policy, strategies, programmes, and projects in the public and private sectors.
Bachelor of Engineering Technology (BEng Tech)							
BEngTech (Civil Engineering)	Civil Engineering focuses on the design, construction and maintenance of infrastructure within the built and natural environments, including roads, bridges, canals, dams, sewerage systems, water and storm water pipelines and structural components of buildings. Civil Engineering Technologists are trained to design safe structures with maintenance, efficiency, and other economic concerns in mind, in order to increase the quality of life for present and future generations.	Full-time 3 years	370	370	–	<ul style="list-style-type: none"> Minimum statutory NSC requirements for degree entry must be met. Mathematics or Technical Mathematics – 60%. Physical Sciences or Technical Science – 50%. <p>Alternatively: A Higher Certificate in Mechatronics Engineering, or Higher Certificate in Renewable Energy Engineering as awarded by Nelson Mandela University, with an average of 60% or above and a minimum of 60% for Mathematics.</p>	Civil Engineering Technologists are required locally and internationally within public and private sectors such as governmental agencies, municipalities, construction companies and consultants. Their work may include aspects of public works such as transportation, water treatment, government buildings, public facilities, airports and train stations, and other large-scale private construction projects.

SCHOOL OF INFORMATION TECHNOLOGY

Qualification	Programme Overview	Delivery mode & duration of study	Minimum Admission Requirements				Career Opportunities
			AS for Maths	AS for	AS for Maths Literacy	Subject Requirements	
Higher Certificate (HCert)							
HCert: IT (User Support Services)* *(also offered on the George Campus)	With this qualification you can work as an entry-level technical or user-support position that spans a wide range of computing environments requiring support personnel. Please note: Candidates who qualify with the Higher Certificate in IT in User Support Services may be admitted to the Diploma: IT (Support Services) if they obtained an average of 60% for all modules at the exit level.	Full-time 1 year	290	290	305	<ul style="list-style-type: none"> Minimum statutory NSC requirements for higher certificate entry must be met. Mathematics or Technical Mathematics - 35%, or Mathematical Literacy – 55%. 	IT Technicians are responsible for troubleshooting computer problems, monitor computer processing systems, install software, and perform tests on computer equipment and programs. Technicians must also respond in a timely manner to service issues and requests.
Diploma (Dip)							
Dip: IT (Software Development)	The purpose of this programme is to develop the IT knowledge and skills to create software that addresses business needs. There is a particular focus on using programming languages together with data and business analysis to design and implement the IT software solutions in contexts ranging from individual desktop applications to online client-server solutions.	Full-time 3 years	330	330	345	<ul style="list-style-type: none"> Minimum statutory NSC requirements for diploma entry must be met. Mathematics or Technical Mathematics - 40%, or Mathematical Literacy – 60%. Recommended NSC/IEB subjects: Computer Applications Technology and/or Information Technology	Software Developers write programs to solve business problems for small business as well as large corporates. This qualification provides the grounding for careers in Software Development or Application Systems Analysis. The trend today is to develop solutions through innovative Apps and Web Development.
Dip: IT (Communication Networks)	The Communication Networks stream focuses on integrating many technologies, ranging from communication network models and protocols, routing, switching, wireless networks, IoT, network virtualization and network automation to network security, cybersecurity and network programming.	Full-time 3 years	330	330	–	<ul style="list-style-type: none"> Minimum statutory NSC requirements for diploma entry must be met. Mathematics or Technical Mathematics - 45%. Recommended NSC/IEB subjects: Computer Applications Technology and/or Information Technology	The communication network specialist would typically play an integral role in network and communication infrastructure design for multidisciplinary environments. With the exponential growth in the telecommunications infrastructure worldwide, professionals in this field will play a major role in future developments.

1. Applicant Score (AS) for Mathematics: Overall score calculated for applicants who have taken Mathematics;
 2. Applicant Score (AS) for Technical Mathematics: Overall score calculated for applicants who have taken Technical Mathematics;
 3. Applicant Score (AS) for Mathematical Literacy: Overall score calculated for applicants who have taken Mathematical Literacy.

Qualification	Programme Overview	Delivery mode & duration of study	Minimum Admission Requirements				Career Opportunities
			AS for Maths	AS for Technical Maths	AS for Maths Literacy	Subject Requirements	
Dip: IT (Support Services)	The Support Services stream focuses on the day-to-day administration of the IT and networks infrastructure and support of the users reliant on this infrastructure.	Full-time 3 years	330	330	345	<ul style="list-style-type: none"> Minimum statutory NSC requirements for diploma entry must be met. Mathematics or Technical Mathematics – 40%, or Mathematical Literacy – 60%. <p>Alternatively: A Higher Certificate in Information Technology (User Support Services), with an average of 60% or above.</p> <p>Recommended NSC/IEB subjects: Computer Applications Technology and/ or Information Technology.</p>	IT Support Services can be a demanding career and can involve anything from being the single IT guru in a small business to a highly skilled specialist (for example in computer networks) in a large support team for a major national or even international company.
Bachelor of Information Technology (BIT)							
Bachelor of Information Technology (BIT)	The purpose of this programme is to develop Information Technology Professionals that are capable of identifying opportunities for the design of software and IT solutions to improve industry and society. This is accomplished by using their technical skills in data process modelling, system evaluation as well as consultancy and project management skills.	Full-time 3 years	370	370	–	<ul style="list-style-type: none"> Minimum statutory NSC requirements for degree entry must be met. Mathematics or Technical Mathematics – 50%. 	IT Professionals are high in demand locally and internationally. This qualification equips BIT graduates with the skills to design and develop new IT solutions ranging from web and mobile applications to cloud computing in various contexts from manufacturing to healthcare, and to support and improve existing IT systems. A BIT graduate is laying the foundation for such roles as Solution Architect, Information Technology Consultant, Systems Analyst and Chief Information Officer.

Qualification	Programme Overview	Delivery mode & duration of study	Minimum Admission Requirements				Career Opportunities
			AS for Maths	AS for Technical Maths	AS for Maths Literacy	Subject Requirements	
Advanced Diploma (AdvDip)							
Advanced Diploma (Information Technology)	The study of Information Technology (IT) at this level aims to address and equip students with advanced knowledge and skills in the Information Technology discipline. Security is a key element in any IT solution and this qualification will equip students with the necessary knowledge to secure infrastructure, as well as to include security in the design and implementation of IT solutions. Students will be able to analyse, design and implement IT solutions to make meaningful contributions to the industry and national development, by ensuring optimal utilisation of IT resources.	Full-time 1 year	–	–	–	This qualification requires a minimum NQF level 6 (Diploma in Information Technology of 360 NQF credits), or a qualification deemed equivalent by the department and approved by the Faculty Management Committee (FMC). Students must have at least a 60% average for the final year major modules of the Diploma or bachelor's degree modules.	Various career opportunities exist, depending on the subject specialisation selected. Student can choose to strengthen their existing knowledge and skills in either Networking, Software Development or User Support Management.

1. Applicant Score (AS) for Mathematics: Overall score calculated for applicants who have taken Mathematics;
2. Applicant Score (AS) for Technical Mathematics: Overall score calculated for applicants who have taken Technical Mathematics;
3. Applicant Score (AS) for Mathematical Literacy: Overall score calculated for applicants who have taken Mathematical Literacy.



George
Campus

Qualification	Programme Overview	Delivery mode & duration of study	Minimum Admission Requirements				Career Opportunities
			AS for Maths	AS for Technical Maths	AS for Maths Literacy	Subject Requirements	

FACULTY OF ENGINEERING, THE BUILT ENVIRONMENT & TECHNOLOGY

Higher Certificate (HCert)

<p>HCert: IT (User Support Services)*</p> <p><i>*(also offered in Gqeberha).</i></p>	<p>The purpose of the qualification is to produce graduates who are productive, competent, able to work independently, and who can manage time effectively in entry-level technical user support positions that span a wide range of computing environments requiring support personnel.</p> <p>Please note: Candidates who qualify with the Higher Certificate in IT in User Support Services may apply for admission to the Diploma: IT (Support Services) currently only offered in Gqeberha (formerly, Port Elizabeth), if they have obtained an average of 60% for all modules at the exit level.</p>	Full-time 1 year	290	290	305	<ul style="list-style-type: none"> Minimum NSC statutory requirements for higher certificate entry must be met. Mathematics or Technical Mathematics – 35%, or Mathematical Literacy – 55%. 	Entry-level IT support technician.
---	---	------------------	-----	-----	-----	--	------------------------------------

1. Applicant Score (AS) for Mathematics: Overall score calculated for applicants who have taken Mathematics;
 2. Applicant Score (AS) for Technical Mathematics: Overall score calculated for applicants who have taken Technical Mathematics;
 3. Applicant Score (AS) for Mathematical Literacy: Overall score calculated for applicants who have taken Mathematical Literacy.

Contact Details

	Gqeberha Campuses	George Campus
General Enquiries	041 504 1111	044 801 5111/5999
Student Access & Enrolment Office	041 504 1111/4993/4811/1504/1018	044 801 5194
Library and Information Services	041 504 2294/2298/3410/3851/1269	044 801 5151/5152
Financial Aid	041 504 1111/9971/9926/1242/3096	044 801 6136
Emthonjeni Student Wellness	041 504 2511/ 3222/ 3854 /1106	044 801 5047
Student Housing	041 1415/1416/3690 (On-Campus) 041 504 2921 (Off-campus)	044 801 5034/5136/5067 (On-campus) 044 801 5139 (Off-campus)
Student societies and clubs	041 504 3229/3351/3894/1235	044 801 5029
Madibaz Sport	041 504 2165	044 801 5037
Student Health Services	041 504 2174/1149/3762/1373	044 801 5062
Universal Accessibility & Disability Services (UADS)	041 504 2313	044 801 5041
Mandela International Office	041 504 2161	

Address of the University

PO Box 77000
Nelson Mandela University
GQEBERHA
6031

E info@mandela.ac.za

W mandela.ac.za



Address of the George Campus

Nelson Mandela University
George Campus
Private Bag X 6531
GEORGE
6530

E george-info@mandela.ac.za

W georgecampus.mandela.ac.za

Our Vision

To be a dynamic African university, recognised for its leadership in generating cutting-edge knowledge for a sustainable future.

Our Mission

To offer a diverse range of life-changing educational experiences for a better world.

To achieve our vision and mission, we will ensure that:

- Our values inform and define our institutional ethos and distinctive educational purpose and philosophy.
- We are committed to promoting equity of access and opportunities so as to give students the best chance of success in their pursuit of lifelong learning and diverse educational goals.
 - We provide a vibrant, stimulating and richly diverse environment that enables staff and students to reach their full potential.
 - We develop graduates and diplomates to be responsible global citizens capable of critical reasoning, innovation, and adaptability.
 - We create and sustain an environment that encourages and supports a vibrant research, scholarship and innovation culture.
- We engage in mutually beneficial partnerships locally, nationally and globally to enhance social, economic, and ecological sustainability.

Our Values



Disclaimer: All reasonable steps have been taken to ensure that the information contained in this guide was correct at the date of publication. All information listed is subject to change and may be updated without prior notification. Nelson Mandela University reserves the right to make changes to the programme details, rules, admission requirements, duration and delivery of courses as published in this guide. Prospective applicants are advised to consult the Student Access & Enrolment Office, the University website or relevant faculties prior to applying.



