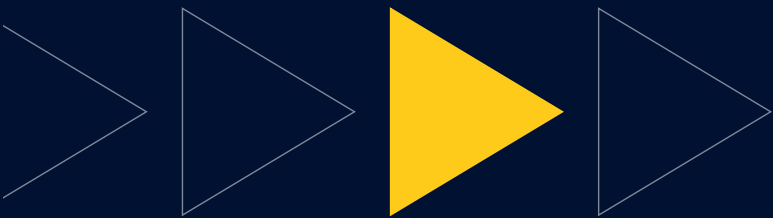


NELSON MANDELA
UNIVERSITY



Faculty of
Health Sciences



Student Access & Enrolment Office
Gqeberha Campuses: 041 504 1111

info@mandela.ac.za
health.mandela.ac.za

School of Behavioural and Lifestyle Sciences

Department of Environmental Health
Department of Psychology
Department of Social Development Professions
Department of Human Movement Science
Department of Human Nutrition and Dietetics

School of Clinical Care and Medicinal Sciences

Department of Nursing Sciences
Department of Radiography
Department of Emergency Medical Care
Department of Medical Laboratory Sciences
Department of Pharmacy

School of Medicine

Department of Family Medicine
Department of Human Biology and Integrated Pathology
Department of Imaging Diagnostics and Therapeutics (Radiology)
Department of Internal Medicine
Department of Medical Practice
Department of Obstetrics and Gynaecology
Department of Paediatrics and Child Health
Department of Perioperative Care (Anaesthetics)
Department of Psychiatry and Mental Health
Department of Public Health
Department of Surgery

Prospective student are advised to contact the Student Access & Enrolment Office prior to applying or refer to the faculty website and the prospectus for more information regarding any qualifications offered within the Faculty of Health Sciences.

Message from the Vice-Chancellor

Welcome

It is my singular honour and privilege to welcome you to the Nelson Mandela University family. Our University is named after the iconic global statesman Nelson Rolihlahla Mandela, who transformed this country through his unwavering commitment to social justice and equality.

Our vision is to be a dynamic African university, recognised for its leadership in generating cutting-edge knowledge for a sustainable future. That is why we are committed to providing inclusive and transformative education that will prepare you to succeed in a diverse and globalised world.

The idea of 'the African university' is for us not simply a catchy byline or tagline, but an ethical injunction that should make clearer the gifts of our country and continent, including its peoples, knowledges, cultures, and languages. In short, the African university should offer us a different way of encountering the world.

Our academic and professional programmes range from certificate-level through to research doctorates, and our qualifications are recognised and accredited by the relevant professional bodies, locally and, in some cases, internationally.

A wide-range of academic programmes are offered in seven faculties:

- Business & Economic Sciences
- Education
- Engineering, the Built Environment & Technology
- Health Sciences
- Humanities
- Law
- Science

We prepare our graduates to become well-rounded citizens, that are socially aware on a global scale, capable of making a difference in whatever path they choose.

As you will see from this guide, Nelson Mandela University offers you an ideal environment and facilities, excellent learning opportunities, a wide spectrum of beyond-the-classroom activities, and a solid values-driven foundation on which to pursue your future dreams.

We look forward to welcoming you to Nelson Mandela University in 2027.

Prof Sibongile Muthwa

Prof Sibongile Muthwa
Vice-Chancellor

Umyalezo osuka kuSekela-Ngqonyela

Wamkelekile

Yinyhweba newonga elilodwa ukunamkela kusapho lweYunivesithi iNelson Mandela. IYunivesithi yethu ithiywe emva kwenjojeli yehlabathi uMongameli uNelson Rolihlahla Mandela, owenza inguqu kweli lizwe ngokuzibophelela kwakhe okungagungqiyo kubulungisa bezentlalo kunye nomakulinganwe.

Umbono wethu kukuba yiYunivesithi yaseAfrika eshukumisayo, ethathelwa ingqalelo ngesikhokelo sayo sokuvelisa ulwazi olungazange lwabakho ukulungiselela ikamva elizinzileyo. Kungoko sizibophelele ekunikazeleni ngemfundo engenguqu noqukaniso eza kukulungiselela ukuba uphumelele kwihlabathi leyantlukwano elibumbeneyo.

Ingcamango yeYunivesithi yaseAfrika ayikokutsala nje amehlo, koko yindlela elungileyo nenocwangco yokuziphatha eza kwenza kucace iziphiwo zelizwe lethu nelizwekazi, ezibandakanya abantu, ulwazi, kunye neelwimi. Ngamafutshane, iYunivesithi yaseAfrika mayisinike indlela eyahlukileyo yokuqubisana nehlabathi.

Iinkqubo zethu kwezemfundo nezobungcali ngokwecandelo ukusukela kwinqanaba lesatifikayeti ukuya kuphandonzulu lobuGqirhalwazi, zithathelwa ingqalelo kwaye zamkelwe ngokusemthethweni ngamaqumrhu ezobungcali efanelekileyo, alpha ekhaya, maxa wambi awamazwe ngamazwe.

Intlaninge yeenkqubo zezemfundo inikezelwa kwiifakhalthi ezisixhenxe:

- EzeNzululwazi kwezoShishino nezoQoqosho
- EzeMfundo
- EzobuNjineli, iNdawo yoLwakhiwo nezobuChwepheshe
- EzeNzululwazi kwezeMpilo
- EzoLuntu
- EzoMthetho
- EzeNzululwazi

Sixhobisa izithwalandwe zethu ukuba zibe ngabemi abazinzileyo, abanolwazi ngezentlalo kwisigaba sehlabathi, abakwaziyo ukwenza umahluko nakweyiphi na inkalo abayikhethileyo.

Njengoko uza kubona kwesi sikhokelo, iYunivesithi iNelson Mandela inikezela ngendawo nezixhobo ezizizo, amathuba okufunda agwesileyo, nothotho lwemisebenzi yangaphaya kwegumbi lokufunda, kunye nesiseko esiluhlalima seenqobo ezisemgangathweni apho unokufezekisa amaphupha ekamva lakho khona. Sijonge phambili ekunamkeleni kwiYunivesithi iNelson Mandela ngowama2027.

Njing Sibongile Muthwa

Njing Sibongile Muthwa

Boodskap van die Visekanselier

Welkom

Dis is my besondere eer en voorreg om jou welkom te heet by Nelson Mandela Universiteit-se familie. Ons Universiteit dra die naam van die ikoniese wêreldleier Nelson Rolihlahla Mandela, wat ons land getransformeer het deur sy onvermoeide toewyding tot sosiale geregtigheid en gelykheid.

Ons visie is om 'n dinamiese Afrika-Universiteit te wees, wat erken word vir ons leierskap in die ontwikkeling van vooruitstrewende kennis vir 'n volhoubare toekoms. Daarom is ons daartoe verbind om inklusiewe en transformerende onderwys te bied wat jou sal voorberei om in 'n diverse en geglobaliseerde wêreld te slaag.

Vir ons is die idee van 'n "Afrika-Universiteit" nie bloot 'n treffende slagspreuk nie, maar 'n etiese oproep wat die rykdom van ons land en die kontinent duideliker moet laat uitstaan — insluitend sy mense, kennisstelsels, kulture en tale. Kortliks, die Afrika-Universiteit behoort vir ons 'n ander manier te bied om die wêreld te benader.

Ons akademiese en professionele programme strek vanaf sertifikaatvlak tot by navorsingsdoktorsgrade, en al ons kwalifikasies word erken en geakkrediteer deur die toepaslike professionele liggame, plaaslik en in sommige gevalle internasionaal.

'n Wye reeks akademiese programme word in sewe fakulteite aangebied:

- Besigheids- en Ekonomiese Wetenskappe
- Opvoedkunde
- Ingenieurswese, die Beboede Omgewing en Tegnologie
- Gesondheidswetenskappe
- Geesteswetenskappe
- Regsgeleerdheid
- Natuurwetenskappe

Ons berei ons gegradueerdes voor om veelsydige burgers te word wat wêreldwyd sosiaal bewus is en in staat is om 'n betekenisvolle verskil te maak, watter rigting hulle ook al volg. Soos jy in hierdie gids sal sien, bied Nelson Mandela Universiteit jou 'n ideale omgewing en uitstekende fasiliteite, uitmuntende leergeleenthede, 'n wye spektrum van aktiwiteite buite die klaskamer, en 'n stewige waardegedrewe grondslag, waarop jy, jou toekomsdrome kan bou.

Ons sien daarna uit om jou in 2027 by Nelson Mandela Universiteit te verwelkom.

Prof Sibongile Muthwa

Prof Sibongile Muthwa
Visekanselier



About Nelson Mandela University

Nelson Mandela University is the only university in the world that carries the name of Nelson Rolihlahla Mandela. We are committed to providing a welcoming and inspiring environment that is supportive, innovative, and diverse. Our students need to feel they are in a place of learning and discovery, founded on strong, egalitarian values that encourage them to express themselves, stretch themselves, and seek new solutions for a better world.

The University embraces Nelson Mandela's challenge to be "caring, responsible and innovative", and recognises the importance of continuously growing and adapting in the pursuit of knowledge, emancipation, and lifelong learning.

The university boasts more than a century of experience in quality higher education, research, and technological innovation. We unite the best traditions of both the academic and technological worlds – from entrance level (certificate) through to research level (PhD).

- We are the largest higher education institution in the Eastern and Southern Cape.
- 34 682 students are enrolled on seven different campuses – six in Nelson Mandela Bay (Gqeberha, formerly Port Elizabeth), and one in George.
- Programmes are housed within seven faculties (Business & Economic Sciences; Education; Engineering, the Built Environment & Technology; Health Sciences; Humanities; Law and Science), and in some cases, programmes are duplicated on more than one campus.
- The university's George Campus is situated at the foot of the Outeniqua Mountains in the picturesque coastal town of George.

With their spectacular natural surroundings – from beaches to mountains to game reserves – Nelson Mandela Bay and George are ideal places to spend your student years, offering all the advantages of city living in a vibrant and multi-cultural environment.

Student services

A wide range of student services and support facilities are offered on university campuses to assist you in every aspect of student life – from what to study, to finding suitable employment after graduation. The university offers a variety of social and cultural activities, which means you can have fun while you study. There is an extensive range of sport codes, associations, societies, clubs, and facilities, allowing you to make new friends, interact with your fellow students and explore subjects of mutual interest.

Below are some of the various services offered to our students:

Library and Information Services

Nelson Mandela University has a network of well-stocked libraries, computer laboratories, and student learning centres which enable students to obtain quality information resources and services required to excel in their various academic courses. These centres are located on all campuses and offer students a quiet space for studying.

Student Health Services

Students have access to a comprehensive primary health care service on every campus, and qualified medical personnel to assist with any health matters which may arise. All services are rendered by registered health care professionals e.g., professional nurses, medical doctors, and registered counsellors.

Emthonjeni Student Wellness

Emthonjeni Student Wellness consist of a team of professionally trained psychologists (clinical, educational, counselling and research psychologists), registered counsellors and intern psychologists who are registered with the Health Professions Council of South Africa. The centre helps students with career choices, job-seeking skills, and any social, personal, or academic problems which they may experience while at university. The centre offers advice in areas such as time management, study methods, personal, social, and emotional wellness, as well as career planning and employment readiness.

Student Development & Governance (SDG)

This department contributes towards the holistic development of students. The core functions of this department are the training and development of student leadership, the coordination of student life & events, and supporting student governance structures such as the Student Representative Council (SRC), the Student Housing Council; faculty representatives, the Sports Council, Oppidani and Rag. They also provide students with advice on the various student societies that you could join. There are currently 29 societies which students can join and these are categorised as academic, religious, developmental, social responsibility and political.

Arts, Culture & Heritage

Arts, Culture & Heritage focuses on the holistic development of students by creating opportunities for their participation in the arts. Arts and Culture provides an environment in which students can exercise and develop their need for cultural and artistic expression. You are provided with the opportunity to express your talents by joining a wide range of interactive, cultural, and active societies. These societies are diverse and vary from performing arts, dancing, music, drama, and choirs.

Student Representative Council (SRC)

The SRC is elected annually in a democratic election to represent the interest of students. The SRC is the only body which the university officially recognises as speaking on behalf of the students.

Oppidani (day students)

Students who do not live in a campus residence are known as Oppidani students. All non-residential Nelson Mandela University students are automatically members of the Oppidani House and are known as Oppies. Although Oppies live off campus, participation in non-academic life is encouraged.

Societies

Students can become a member of numerous student-run societies enabling them to have fun with likeminded students while gaining valuable leadership, communication, and social skills. There are presently 64 societies active on our various campuses, and these societies are categorised as either academic, religious, developmental, social responsibility or political.

Madibaz Youth Entrepreneurship Lab

The Madibaz Youth Entrepreneurship Lab aims to build an enabling entrepreneurial ecosystem at Nelson Mandela University through the advancement of support to new and existing youth entrepreneurs as well as through collaborations in areas of entrepreneurship development. The Entrepreneurship Lab also aims to embrace entrepreneurial mindsets and ethos amongst the students at Nelson Mandela University through practical entrepreneurship workshops, symposiums, mentorship, as well as opportunity for student entrepreneurs to run businesses on-campus.



Madibaz Sport


Madibaz sport offers a wide variety of competitive and recreational sport programmes for students and staff, as well as the wider university community. These programmes provide students with the opportunity to participate in various sport and recreational activities ranging from informal social games to highly competitive leagues where skills are tested against the best in the province and country. In addition, through the various high-performance programmes coordinated by the Madibaz High Performance Complex, the university plays a major role in the process of developing elite and potentially elite players.

Madibaz sport also provides club members with excellent sport facilities, scientific based coaching programmes, which includes organisational and administrative support. Well-equipped health and fitness centres offer professional gym facilities at student prices, and aid in sport performance testing, sport specific training and injury rehabilitation.



The following sport codes are offered on the various university campuses:

Athletics – Basketball – Boxing – Chess – Cricket – Football – Futsal – Golf – Hockey – Karate – Netball – Rugby – Rowing – Squash – Surfing – Swimming – Table Tennis – Tennis – Volleyball – Water polo



MADIBAZ

All teams have nicknames, or names by which they are popularly known. Those who work, study and play sport at Nelson Mandela University proudly refer to themselves as Madibaz. In addition to our name, the university also boasts a dolphin mascot, named Diba.

Admission to Nelson Mandela University

Overview

- Applications for early admission (excluding MBChB, BPharm & BRad applications) should be submitted by **3 August 2026**. Late applications (excluding MBChB, BPharm & BRad applications) will however be considered after this date, based on academic merit, until **30 September 2026**. Places are limited and it is therefore in your best interest to submit your application early.
- MBChB applications close on **30 June 2026**. Places in the MBChB degree are limited and it is therefore in your best interest to submit your application early.
- Bachelor of Pharmacy (BPharm) and Bachelor of Radiography (Diagnostic) applications also close on **30 June 2026**. Places in the Bachelor of Radiography (Diagnostic) & Bachelor of Pharmacy (BPharm) degrees are limited, and it is therefore in your best interest to submit your application early.
- Prospective students must meet the statutory minimum requirements based on the National Senior Certificate (NSC), or equivalent school-leaving certificate for admission to a higher certificate, diploma, or degree qualification, in order to be considered.
- Admission to an undergraduate programme will be further determined by an applicant's Applicant Score (AS).
- Submission of a complete application does not mean that you have been accepted as a student, or that you may register. All prospective students are selected in accordance with the admissions policy of the university, and applicants will be notified of the outcome of their application by the Student Access and Enrolment Office.
- If you are currently in Grade 12, conditional acceptance is based on your **Applicant Score (AS)** obtained in your Grade 11 final, or Grade 12 June or Grade 12 September examinations. However, if you have already matriculated then your final Grade 12 NSC, SACAI, or IEB results will be used to evaluate your application for conditional acceptance. Please note that the final decision (to be made in January) is based on your final Grade 12 NSC/SACAI/IEB exam results.
- Applicants with the highest Applicant Scores (AS) for a programme are prioritised for final selection, also called a firm offer - until all spaces are taken. Final selection only takes place in January when final Gr 12 examination results are available. To increase your chances of acceptance applicants will need to have achieved excellent results in their final exam or have achieved far more than the minimum admission criteria required for a programme, to be considered.
- Once you've submitted your application you may be required to submit a portfolio of evidence, audition or attend an interview. Your admission decision will then only be made once one, or all of these additional requirements have been completed.
- In addition to the general university admission requirements, each programme also has its own specific requirements.
- Applicants with alternate, international, or foreign qualifications must satisfy the requirements laid down by the Matriculation Board to qualify for a certificate of exemption for a particular alternate, international or foreign school-leaving qualification. These requirements are contained in Government Gazette No. 31674, 5 December 2008, and can be found on the Universities South Africa (USAF) website <https://mb.usaf.ac.za/sc-government-gazette-5-december-2008/>. Applications for such certificates must be made to the Matriculation board directly: <https://mb.usaf.ac.za/>
- In the case of applications by candidates who have studied at other higher education institutions accredited by the South African Qualifications Authority (SAQA), the results obtained at such institutions will be considered, together with their academic record and certificate of conduct.
- There are limits to the number of students that can be admitted to each programme.
- **If a programme is full, you may be denied admission even though you meet the minimum requirements.**

- Prospective students who **matriculated prior to 2008** must please contact the university's Student Access & Enrolment Office to determine their admission requirements.
- For more information on the application process please contact **041 504 1111** or visit our website <https://www.mandela.ac.za/Study-at-Mandela> before applying.
- **Please note that admission requirements are subject to change. Information in this programme guide was correct as of April 2026.**



Admission Requirements

National Senior Certificate (NSC)

- The table below explains what the minimum statutory requirements for each qualification level are (Higher Certificate, Diploma or Degree).
- The university has also set its own additional minimum entry requirements.

Qualification	Minimum statutory entry requirement
Higher Certificate	Pass the NSC, with a minimum of 30% in the language of learning and teaching of the higher education institution, together with any other university requirements.
Diploma	Pass the NSC with a minimum of 30% in the language of learning and teaching of the higher education institution, coupled with an achievement rating of 3 (40–49%) or better in four recognised NSC 20-credit subjects, together with any other university requirements.
Bachelor's Degree	Pass the NSC with a minimum of 30% in the language of learning and teaching of the higher education institution, coupled with an achievement rating of 4 (50–59%) or better in four NSC 20-credit subjects together with any other university requirements.

Please note that the achievement of the minimum NSC admission requirements does not necessarily guarantee admission to any programme or field of study at Nelson Mandela University.

How to calculate your Applicant Score (AS)

- First look-up the **Applicant Score (AS)** for the qualification you are applying for – also note any required subjects.
- Your Applicant Score (AS) will be different if you took Mathematics, Mathematical Literacy or Technical Mathematics at school.
- Your Applicant Score (AS) is calculated using **six** subjects. Please note that Life Orientation (LO) is excluded.
- Write down your Grade 12 subjects and the most recent percentage (%) obtained in each subject (**NO** Gr 12 March results).
- You **MUST** include the results for the following **three fundamental subjects: 1)** Home language; **2)** 1st Add. Language; and **3)** Maths; or Maths Lit; or Technical Maths.
- For applicants with seven Grade 12 NSC/IEB subjects, their AS is calculated by adding the percentages for their six 20-credit subjects (**Note** that the Life Orientation percentage is not included as it is a 10-credit subject). This gives a score out of 600.
- In addition, for those applicants from quintile 1 to 3 schools who attain 50% or higher for Life Orientation, 7 additional points are added to their score out of 600 to arrive at their final AS.

- Compare your AS & subject requirements to the minimum needed for the qualification you want to apply for.
- If your Applicant Score (AS) & subject requirements are below the minimum required, you will need to consider another qualification for which you do qualify.

* All South African **public** ordinary schools are categorised into five groups, called quintiles. Quintile 1 to 3 are non-fee-paying schools, while Quintiles 4 & 5 are fee paying schools.

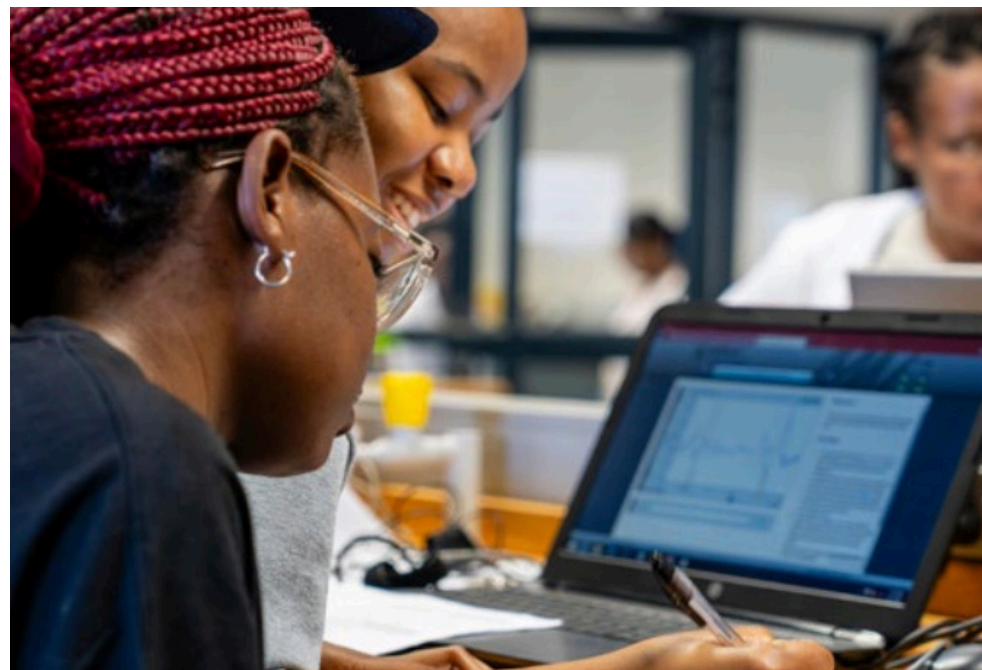
The table below provides an example of how to calculate the AS for:

- Applicant 1** who has 7 NSC Grade 12 subjects, who is applying for a programme with Life Science and Physical Science as required subjects: and
- Applicant 2** who is applying for the same programme, but who took 8 subjects in Grade 12.
- Applicant 3** who is applying for the same programme, but who is from a quintile 1, 2 or 3 school.

NSC Subject	Applicant 1		Applicant 2		Applicant 3 from quintile 1 to 3 school	
	% obtained	% used to calculate AS	% obtained	% used to calculate AS	% obtained	% used to calculate AS
isiXhosa (Home Language)	78	78	78	78	78	78
English (1st Additional Language)	60	60	60	60	60	60
Mathematics	65	65	65	65	65	65
Life Science	62	62	62	62	62	62
Physical Science	50	50	50	50	50	50
History	–	–	60	60	–	–
Geography	55	55	55	–	55	55
Life Orientation	88	–	88	–	88 LO>50%	7
APPLICANT SCORE (AS)		370		375		377

How do you apply?

- Applicants can apply online by logging on to www.mandela.ac.za/Study-at-Mandela
- Ensure that you meet the minimum **Applicant Score (AS) and subject requirements** before submitting your completed online application and supporting documentation.
- Please note that certain qualifications have additional selection processes, for example a portfolio of evidence, interview, or fitness/medical tests.
- **No application fee** is required for South African citizens, but there is an application fee for International Students.
- **Remember to include your cell number on your form**, as we will be sending you your application status and other important information via this number (Please do not include +27 or any spacing when you enter your cell number).
- Applications for early admission should be submitted by **3 August 2026**.
- Late applications will still be considered up to **30 September 2026**, but as space is limited, we advise applicants to submit/complete their application form before the August closing date.
- MBChB, BPharm and Bachelor or Radiography (Diagnostic) qualifications close earlier (**30 June 2026**) than the dates listed above. Applicants need to consult the student access & enrolment office, website, or faculty to determine annual closing dates. No late applications will be considered after the published closing date.



Online applications

- To apply online, you will need your **own cell number** and a valid **personal email address** (should you not have an e-mail account, please open one before proceeding with your online application).
- Online application(s) are **divided into two sections** (please ensure you complete both).
- **Section 1** (applicant profile) – before applying online you will first need to create an applicant profile/account, before you will be able to access the online application platform. This does not mean that you've applied, nor will you be considered for admission yet.
- Once created, you'll be sent an e-mail with a link in which you need to verify your e-mail address (should you not have received this e-mail, please look in your spam mailbox before contacting the University).
- Using the link provided, login using your newly created username and password to begin your online application.
- **Section 2** (online application) - complete all relevant sections and upload the support documents required, to finalise your online application. If you have indicated you require student housing, a separate online application will need to be completed.
- Guidelines on how to apply for student housing will be emailed to the account you have registered with.
- Remember to include **all your supporting documentation** with your online application as a PDF or JPEG formatted attachment.
- No changes can be made after you have submitted your application form. If you need to update your online application, refer to the online application guideline document for the process you need to follow.
- Should you require support in completing your online application, you may contact our Contact Centre on **041-504 1111**, or e-mail: info@mandela.ac.za; or you can also log a query on <https://crm.mandela.ac.za>

Important documentation

In order for the university to finalise your application you are requested to submit the following support documentation with your application:

- A certified copy of your **identity document** (ID document compulsory for SA Citizens – your application cannot be processed without a certified copy of your ID. You may also provide your ID number or serial number that appears on your birth certificate should you still be waiting for your ID Document to be issued).
- A certified copy of **your latest school results** (grade 11 final, or grade 12 June/September results, or final school leaving results if you have already completed Gr 12 (e.g., if you are currently at school and apply in August submit your June results). **No grade 12 March results.**
- **Declaration by your parent / legal guardian / surety form** (downloaded from the university website),
- A certified copy of your **parent / legal guardian / surety's identity document.**
- Completed **disability assessments form** (if applicable).
- Full **official academic record(s) and certificate(s) of conduct** from previous higher education institution(s) (if applicable).
- Copy of your current **residential / home or postal address.**

NB: Please note that your **student number/identity number** must clearly be indicated on all documentation submitted. Your application form cannot be processed if you do not include all supporting documentation with your application.



Extended Curriculum Programmes

The transition from school to university is challenging for most young people. It is, however, even more dramatic for learners who for various reasons, find that they do not meet the minimum admission requirements of the programme of their choice. Nelson Mandela University offers a wide range of extended curriculum programmes that provide such students with the opportunity to enroll for an extended programme in order to obtain the same mainstream qualification at the end of their study career. In practice, it implies that a student will complete a three-year degree or diploma programme in four years. These programmes provide an environment in which academic support and skills development are integrated with regular academic work. Additional support courses and activities in the first two years of the extended programme assist students to adapt to the university's learning environment in order to follow the mainstream courses during the last two years of study. International/Foreign/NCV level 4 & senior certificate equivalency conversion table.



International/Foreign/NCV level 4 & senior certificate equivalency conversion table

- South African and International applicants with International, NC(V) level 4 or Foreign School-Leaving certificates, should use the table below to calculate an equivalent Applicant Score (AS) for admission, based on percentages obtained in such certificates.
- Applicants with international or foreign qualifications must also satisfy the requirements laid down by the Matriculation Board to qualify for a certificate of exemption for a particular international or foreign school-leaving qualification. Applications for such certificates must be made to the Matriculation board directly: <https://mb.usaf.ac.za/>
- Applicants will have to comply with the minimum Applicant Score (AS) set for the UG qualification they wish to apply for, as well as meet any other additional subject requirements directly.
- To calculate your Applicant Score (AS) use the symbols/achievement rating/percentages obtained in your school-leaving examinations in order to convert them to an equivalent achievement standard on the National Senior Certificate (NSC).
- Your AS is calculated using six subjects, which must include the language(s) and subjects required for admission but excluding LO

Subject % to use when calculating the Applicant Score*	Senior Cert HG	Senior Cert SG	HIGCSE NSSC HL	IGCSE NSSC OL	O-LEVEL	AS	A-LEVEL	IB HL	IB SL	KCSE	NC(V)4** Fundamental	NC(V)4 Vocational
115							A*, A	7			Use your actual percentage(s) obtained on your statement of results / certificate.	
105							B	6				
95	A		1			A	C	5	7	A+,A		
85	B		2			B	D	4	6	A-		
75	C	A	3	A	A	C	E	3	5	B+		5 (90-100%)
65	D	B		B	B	D		2	4	B, B-		5 (80-89%)
55	E	C	4***	C	C	E		1	3	C+		4 (70-79%)
45	F	D		D	D				2	D		3 (50-69%)
35	FF	E		E	E				1	E		2 (40-49%)
25	G, GG, H	F, FF, G, GG, H		F, G						F, G		1 (0-39%)

* It is recommended that the midpoint of the NSC percentage range be used when calculating the AS, as the results of the above qualifications (excluding the NCV Fundamentals) are reported as either a symbol or numeric value. The range of Subject % exceeds the 100% mark to allow for inclusion of the A Level and IB HL as both qualifications are considered to be at a higher level than the NSC.

** As the Fundamental subjects are considered to be at the same level as the NSC, use the actual percentage obtained for Language and Mathematics/Mathematical Literacy. For the four Vocational Subjects use the values in the relevant column of the table above.

*** A symbol 4 obtained for a NSSC Higher Level / HIGCSE subject is regarded as a pass mark in the equivalent Ordinary or IGCSE level subject except for a First Language subject which becomes a 2nd language pass if another language is also passed (From: <https://mb.usaf.ac.za/paragraph-15/>).

Key:

NSC - National Senior Certificate

O-Level - Ordinary level

Senior Cert HG - Senior Certificate Higher Grade

AS - Advanced Subsidiary

Senior Cert SG - Senior Certificate Standard Grade

A-Level - Advanced level

HIGCSE - Higher International Graduate Certificate of Secondary Education

IB HL - International Baccalaureate Schools (Higher Levels)

IGCSE - International Graduate Certificate of Secondary Education

IB SL - International Baccalaureate Schools (Standard Levels)

NSSC HL - Namibian Senior Secondary Certificate Higher Levels

KCSE - Kenyan Certificate of Secondary Education

NSSC OL - Namibian Senior Secondary Certificate Ordinary Levels

NC(V) 4 - National Certificate Vocational Level 4



Financial facts

- Before registering as a student, you need to determine whether you will have sufficient funds to finance your studies. Costs involved in higher education include enrolment fees, registration and tuition fees, textbooks, stationery, transport, meals, accommodation, materials and laboratory fees, sports equipment, and general living expenses.
- Nelson Mandela University offers financial assistance to full-time students in the form of bursaries, merit awards, and scholarships, for top academic achievers.
- A number of sport grants are also available for top sports performers and those who show outstanding potential.
- Admission to the university does not imply that you will be eligible for a merit award, scholarship, or bursary.
- Applications for NSFAS funding must be made directly on the NSFAS website.
- For more information on financial assistance, contact the **Financial Aid Office** on (041) 504 1111, or visit their webpage www.mandela.ac.za/finaid

Scholar Merit awards

- Scholar Merit Awards are awarded to new first-year undergraduate students who have achieved excellent academic results in their final grade 12 NSC/IEB examinations. Students must have passed Grade 12 not more than 2 years prior to their first year of study. If you passed Gr 12 the year adjacent to your first year of study, then a Previous Activity Form should be completed and submitted to Financial Aid office, North Campus before 31 March. Your registration at this University must also be your first-time registering at a Higher Education institution. The rand value of this award is determined on a sliding scale between a predetermined minimum and maximum value and is awarded to first-year students who qualify by the Financial Aid Office.

Your Applicant Score (AS) is calculated as follows:

- For applicants with seven or more Grade 12 subjects, your AS is calculated by adding the percentages for your six best subjects. This gives a score out of 600. Life Orientation (LO) is not included in your AS calculations for applicants from quintiles 4 and 5 schools.
- For those applicants from quintile 1, 2 or 3 school* who attain 50% or higher for Life Orientation, 7 points may be added to your score out of 600 to arrive at your final AS.

The rand value of each award is determined on a sliding scale of AS scores according to the table below.

Applicant Score (AS)	Amount
Band 1: 500 and above	R 16 500*
Band 2: 470 – 499	R 12 500*
Band 3: 410 – 469	R 8 500*

Disclaimer: "The university reserves the right to amend the award values and policy with regards to the bursary and may in its sole discretion; decide to implement such amendments retrospectively". T's & C's apply.

For more information contact the **Financial Aid Office** on **041 504 1111**

School Leadership awards

School Leadership Awards are granted to head prefects (Head Boy/Head Girl), or Learner Representative Council President (in cases of no Head Prefects) and who meet the criteria for a Scholar Merit Bursary, qualifies for the School Leadership award of R4200 in addition to the Scholar Merit Bursary. Documentary proof of your Grade 12 results, including a letter from your school verifying your leadership role must be submitted to the Financial Aid office on North Campus as soon as possible. The last day for submission of these documents is 31 March annually. Students who were Head Prefects (or Learner Council Presidents) but do not qualify for a Scholar Merit Bursary, nevertheless, qualifies for a School Leadership Award of R4200.

Disclaimer: "The university reserves the right to amend the award value and policy with regards to the bursary and may in its sole discretion; decide to implement such amendments retrospectively".
Student merit bursaries

Student merit bursaries

Returning undergraduate students may qualify for merit bursaries based on their final results in the previous year of study. Students must have passed all their modules at the first attempt. The rand value of which is determined on a sliding scale. These bursaries are available to South African as well as international students. Students must have also achieved a Weighted Average Academic Performance which is determined per faculty, and registered for a minimum relative course weight of at least 0.80 (or 96 credits)

Faculty of Business and Economic Science – 75%

Faculty of EBET – 70%

Faculty of Education – 75%

Faculty of Health Sciences – 70%

Faculty of Humanities – 75%

Faculty of Law – 70%

Faculty of Science – 70%

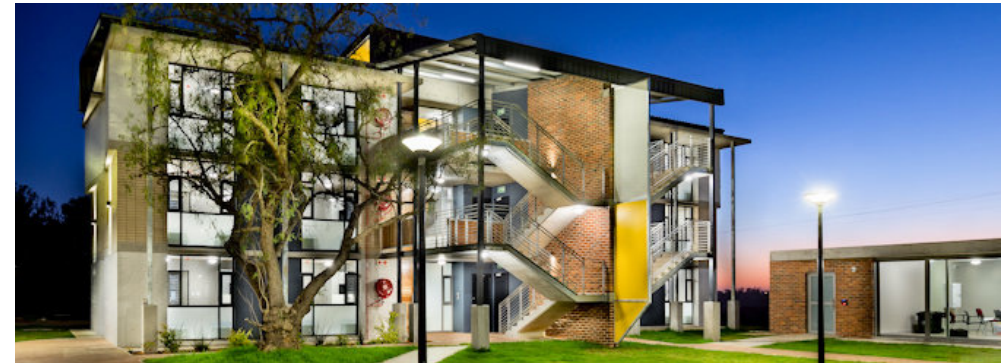
NB: Exempted courses are not included in the minimum relative weight or credit value for merit award purposes. The value of the bursary is not a fixed amount and is determined in accordance with the available budget. These awards are only for undergraduate studies. Students intending to register for Postgraduate Diplomas or Honours studies must apply for those bursaries on the prescribed form before 1 November of the year preceding postgraduate studies.

Disclaimer: "The university reserves the right to amend the award values and policy with regards to the bursary and may in its sole discretion; decide to implement such amendments retrospectively". T's & C's apply.

Sport bursaries

Madibaz Sport offers sport bursaries of varying amounts to sport performers who have demonstrated the ability to play sport at a high level of competition. Bursary application forms can be obtained from Madibaz Sport by e-mail: madibazsport@mandela.ac.za or by calling (041) 504 2165.

Disclaimer: "The university reserves the right to amend the award values and policy with regards to the bursary and may in its sole discretion; decide to implement such amendments retrospectively".



Accommodation

On-campus

The university provides various on-campus accommodation options. These include the residences on the university's Summerstrand and George campuses, and the Student Villages in Summerstrand, which consist of self-catering units for senior students. As accommodation is limited, early application is essential. Prospective students should note that being offered a place in an academic programme does not mean they have also been accepted into an on-campus residence. The closing date for residence applications is: **30 September 2026**. No late applications will be considered.

For more information contact: (041) 504 3690/1415/1416 | resadmissions@mandela.ac.za | www.mandela.ac.za/studenthousing

Off-campus

Some students prefer living off-campus. Off-campus accommodation options include renting flats and houses or boarding at nearby private residences. The university offers a service to assist students in finding suitable off-campus accommodation. For more information on off-campus accommodation please contact **(041) 504 2921** or e-mail: offcampus.accomodation@mandela.ac.za

Applying for residence accommodation

- Apply online (<http://studenthousing.mandela.ac.za/Apply-for-admission>);
- Please note that indicating that you require accommodation does not guarantee placement in any of the university's on-campus accommodation options.
- A selection process has to take place and priority will be given to applicants who have obtained excellent academic results.
- No student will be admitted to residence until she/he has been academically admitted to a university programme, or before the appropriate fees have been paid.
- Also note that residence accommodation is limited, and preference will be given to applications received before the end of September.
- Please submit a residence accommodation form together with proof of your current residential/home or postal address via e-mail (resadmissions@mandela.ac.za), fax (041- 504 9765) or post (Residence Accommodation, PO Box 77000, Nelson Mandela University, Gqeberha, 6031).

International students

Nelson Mandela University's International Office (MIO) provides information and assistance to prospective and current international students. The institution is home to more than 791 international students from over 46 countries around the world. Most international students are from the African continent. Information on study programmes, fees, accommodation, and study permit requirements can be obtained from this office. Please contact them on +27 (0)41 504 2161 or e-mail: international@mandela.ac.za or visit their website (www.mandela.ac.za/international). **The closing date for applications by international students is 30 September 2026.**

Study Abroad

The International Office also provides study abroad opportunities to South African second- to final year students registered at Nelson Mandela University. Opportunities are provided to students to enroll for one semester abroad at a partner university. For more information contact international@mandela.ac.za or visit the Office for International Education.



Students with Disabilities

Nelson Mandela University offers concessions to students with permanent, and/or temporary disabilities, and/or disorders who may not be able to reflect their true ability under standard formal assessment (test and examinations) conditions. It is the aim of the university to assist students to reach their full academic potential. This is done by providing assistance and/or concessions which ensures equitable, reasonable, and appropriate access to higher education. All of which are based on the national standards applicable to tertiary education in South Africa, whilst not prejudicing deserving students, their peers, and/or any academic programme.

For more information on accessibility and how your particular disability may be accommodated, you are advised to contact **the Universal Accessibility & Disability Services (UADS)**, on 041-504 2313, or e-mail: disability@mandela.ac.za as early as possible. Early enquiries during the year preceding application are encouraged, so that requests may be considered prior to admission. 2313 or E-mail: disability@mandela.ac.za for further information.



Co-Curricular Record

While in university, it is important to not only achieve your goals related to your academics, but also to develop yourself in ways that will help you be a potential employee that employers want to hire. You are encouraged to develop yourself in 16 key areas believed to be attractive traits to employers, both locally and globally. Whether it be through campus leadership positions like First Year Success Buddies, BtC and Res Mentors or involvement in experiences like societies or community involvement sites, co-curricular activities provide opportunities in which you can develop these key skills. Additionally, you can receive formal recognition for the learning achieved through these out-of-the-classroom activities with the Co-Curricular Record (CCR). The CCR serves as a companion to your Academic Record and formally acknowledges your participation in approved cocurricular activities, including the learning outcomes achieved through participation. It is never too early to start developing yourself for your future career.

The University Shop

The University Shop is a project of the Alumni Association and was established as a brand development tool. By wearing Nelson Mandela University branded items, students, staff, alumni, and friends can show their affinity and support for the University. You can visit the one-stop shop for all University branded clothing, bags, folders, and stationery in person, or shop online. **For more information contact:** 041 – 504 4371, or E-mail: shop@mandela.ac.za, or visit their website: <https://onlineshop.mandela.ac.za/>



Language of Teaching and Learning

While Nelson Mandela University is committed to multilingualism, the predominant language of teaching and learning at the University is English. The statutory language requirements can be met by obtaining a minimum rating of 3 (40 - 49%) or higher in English, Afrikaans or isiXhosa as a home or first additional language. Some qualifications may require a higher pass mark for language(s) than what is indicated here. Please refer to the subject requirements of the qualification you intend applying for, before completing your online application form to ensure that you meet the direct admission & subject requirements.

Virtual Tours

Explore Nelson Mandela University from anywhere around the world with our immersive virtual tours! Whether you're planning a visit, researching our facilities, or simply curious to see what we offer, our virtual tours provide a convenient and engaging way to experience studying at our institution. Navigate through different areas, zoom in on details, and explore campus life, all at your own pace. **For more information:** <https://www.mandela.ac.za/About-us/Virtual-tours>



SCHOOL OF BEHAVIOURAL AND LIFESTYLE SCIENCES

Department of Environmental Health

Qualification	Programme Overview	Delivery mode & duration of study	Minimum Admission Requirements				Career Opportunities
			AS for Maths	AS for Technical Maths	AS for Maths Literacy	Subject Requirements	
Bachelor of Environmental Health							
Bachelor of Environmental Health	Environmental Health Practitioners (EHPs) apply their skills to identify, assess and manage various risks to human health. They evaluate the effectiveness and efficiency of control measures to make necessary improvements. This includes developing and auditing management systems in a variety of environmental health fields, such as air quality, water quality, food and meat hygiene, occupational health and safety and environmental health related sustainability initiatives.	Full-time 4 years	390	–	–	<ul style="list-style-type: none"> • Minimum NSC statutory requirements for degree entry must be met. • Mathematics – 50%, • Life Sciences – 50%, • Physical Sciences – 50%, • Admission is subject to departmental selection. 	<p>The Environmental Health Practitioner will function as a member of a multidisciplinary team of professionals:</p> <ul style="list-style-type: none"> • Practising as an EHP for National, Provincial & Local Government. • Practising as an inspector for the Department of Employment & Labour. • Practising as a meat inspector with the Department of Agriculture and private abattoirs. • Practising as an Occupational Hygienist in government and the private sector. • Practising as an Occupational Health and Safety Practitioner in government and the private sector. • Practising in various roles in the private sector, e.g., Auditor, Risk Assessor, Pollution Control Practitioner, Waste Specialist, Training Specialist • Academia: Lecturing & Research

Qualification	Programme Overview	Delivery mode & duration of study	Minimum Admission Requirements				Career Opportunities
			AS for Maths	AS for Technical Maths	AS for Maths Literacy	Subject Requirements	
Department of Psychology							
Bachelor of Arts in Psychology							
BAPsych (Psychology)	<p>This programme provides training for students who want to develop psychological knowledge and skills for use in people-oriented careers in helping settings as well as in business settings. It also provides the foundation from which a professional qualification in either clinical/counselling psychology or industrial & organisational psychology can be built.</p> <p>The core modules cover the following broad areas: health psychology, gender and social psychology, traumatology, crosscultural psychology, neuropsychology, research methodology, relationship psychology, psychopathology, psychological assessment and intervention, career psychology, human resource management, organisational behaviour and consumer behaviour.</p>	Full-time 3 years	350	365	365	<ul style="list-style-type: none"> • Minimum NSC statutory requirements for degree entry must be met. • Mathematics – 45%, or Technical Mathematics, or Mathematical Literacy – 65%. 	Articulation into postgraduate and professional training in both clinical/ counselling psychology, industrial and organisational psychology. Opportunities in the field of people related careers, NGO sectors, childcare and lay counselling, human resource management as well as organisational development.

1. Applicant Score (AS) for Mathematics: Overall score calculated for applicants who have taken Mathematics;
2. Applicant Score (AS) for Technical Mathematics: Overall score calculated for applicants who have taken Technical Mathematics;
3. Applicant Score (AS) for Mathematical Literacy: Overall score calculated for applicants who have taken Mathematical Literacy.

Department of Social Development Professions

Qualification	Programme Overview	Delivery mode & duration of study	Minimum Admission Requirements				Career Opportunities
			AS for Maths	AS for Technical Maths	AS for Maths Literacy	Subject Requirements	
Bachelor of Social Work (BSW)							
BSW (Social Work)	<p>Social work is aimed at facilitating a change process with individuals, families, and communities by enabling people to address structural inequalities and social injustices using methods of casework, groupwork, community development, supervision and research.</p> <p>A social worker should possess both good interpersonal, as well as communication skills and practices within the ethical boundaries of the profession. This programme is made up of compulsory fundamental and core modules, as well as a choice of elective modules which can be selected according to the student's interests.</p> <p>Practical work is an integral part of the degree from second year level. Graduates qualify for registration as social workers with the Council for Social Service Professions.</p>	Full-time 4 years	350	365	365	<ul style="list-style-type: none"> • Minimum NSC statutory requirements for degree entry must be met. • Mathematics – 40%, or Technical Mathematics, or Mathematical Literacy – 65%. • Admission is subject to departmental selection. <p>Candidates must register as student social workers with the South African Council for Social Service Professions (SACSSP), before commencing any of the practical or applied modules at community based organisations.</p> <p>Please note that in terms of the SACSSP policy on 'fit and proper person', all student social workers need to submit a clean police clearance certificate prior to their registration as student social workers in their second year of study when they commence with their practical work.</p>	There are employment opportunities for social workers in family and child welfare organisations, government departments such as health and welfare, prisons, hospitals, schools, industry, the police and defence force, and organisations that work in marginalised communities.

Department of Human Nutrition and Dietetics

Qualification	Programme Overview	Delivery mode & duration of study	Minimum Admission Requirements				Career Opportunities
			AS for Maths	AS for Technical Maths	AS for Maths Literacy	Subject Requirements	
Bachelor of Science (BSc)							
BSc (Dietetics)	<p>With nutrition acknowledged as a key to the future of modern medicine, dietetics is one of the world's fastest-growing professions.</p> <p>The BSc (Dietetics) degree at Nelson Mandela University trains competent and ethical dietetics professionals who will contribute to the medical therapeutic, community nutrition and specialised food services sectors. They will also be able to participate in research in the field of nutrition and dietetics.</p> <p>Graduates are required to register with the Health Professional Council of South Africa (HPCSA) before they can practice as a Dietitian.</p>	Full-time 4 years	390	–	–	<ul style="list-style-type: none"> • Minimum NSC statutory requirements for degree entry must be met. • Mathematics – 60%, • Physical Sciences – 60%. 	<p>Dietitians have become increasingly important in both the private and public sectors.</p> <p>They work in various settings:</p> <p>Private practice and therapeutic settings They consult clients / patients on nutrition therapy and / or work in a hospital as part of a health care team. They can also have private practices with attention to sport, babies and/or senior citizens.</p> <p>Industry They share their expertise by working in the field of health care, food or pharmaceutical industries.</p> <p>Community They work in community health facilities providing nutrition therapy for specific health conditions; promote healthy eating and monitor and manage food services in institutions e.g. schools and homes for the aged.</p> <p>Food service management They manage the provision of healthy and specialised diets in health care facilities, correctional services, welfare care facilities and schools.</p>

1. Applicant Score (AS) for Mathematics: Overall score calculated for applicants who have taken Mathematics;
 2. Applicant Score (AS) for Technical Mathematics: Overall score calculated for applicants who have taken Technical Mathematics;
 3. Applicant Score (AS) for Mathematical Literacy: Overall score calculated for applicants who have taken Mathematical Literacy.

Department of Human Movement Science

Qualification	Programme Overview	Delivery mode & duration of study	Minimum Admission Requirements				Career Opportunities
			AS for Maths	AS for Technical Maths	AS for Maths Literacy	Subject Requirements	
Diploma (Dip)							
Dip (Sport Management)	<p>This programme equips students with the knowledge, attitudes and skills which are essential for a successful career in sport management.</p> <p>The programme also provides the opportunity for the students to fully realise their potential in the one sport in which they chose to specialise. Students are required to belong to a club of their specialist sport, approved by the Human Movement Science department, and to involve themselves in the administration of the club .</p> <p>Apart from the academic programme, students are expected to attend special courses and excursions and involve themselves in projects that are arranged for their benefit. These activities are not necessarily accommodated in the academic fee structure.</p>	Full-time 3 years	330	345	345	<ul style="list-style-type: none"> • Minimum NSC statutory requirements for diploma entry must be met. • Mathematics – 40%, or Technical Mathematics, or Mathematical Literacy – 60%. • Active participation in competitive sport as approved by the department. • Preference will be given to students who have excelled in sport and/or who have extensive involvement in sport. <p>Applicants are required to upload the following compulsory documents with their online application:</p> <ul style="list-style-type: none"> • A comprehensive sport playing and sport involvement Curriculum Vitae. • Applicants are required to provide evidence of current sport being played at school and/or at club level in the year of application, in the form of a letter from the school and/or club indicating involvement and level of involvement in the sport. • The letter from the school or club should be dated and signed, on an official school or club letterhead, and include the full name and surname and the position of the person in the school / club. 	<p>The sport manager is involved in the management of sport and recreation facilities, events and services, to people who participate in sport and recreation for either leisure time or professional reasons.</p> <p>Career opportunities available include sport administrator, sport marketer, sport agent, sport manager, sport development officer, sport commentator, sport entrepreneur.</p>
Bachelor of Human Movement Science (BHMS)							
BHMS (Human Movement Science)	This programme allows students to specialise in one of four different areas of human movement science, and to complement this with additional subjects such as business management, psychology or physiology, to suit their career plans.	Full-time 3 years	350	365	365	<ul style="list-style-type: none"> • Minimum NSC statutory requirements for degree entry must be met. • Mathematics – 45%, or Technical Mathematics, or Mathematical Literacy – 65%. • Candidates must pass a medical examination as required by the Department of Human Movement Science. 	<p>Career opportunities include teaching, school and professional sport coaching, exercise and fitness instruction, sport management and recreation. National, provincial and local government as well as institutions such as universities and police services employ sport and recreation specialists and managers.</p>

Qualification	Programme Overview	Delivery mode & duration of study	Minimum Admission Requirements				Career Opportunities
			AS for Maths	AS for Technical Maths	AS for Maths Literacy	Subject Requirements	
BHMS (Human Movement Science) (continued)	<p>The four specialisation areas are:</p> <ul style="list-style-type: none"> • Exercise science • Recreation • Sport management • Coaching science 						The rapidly-growing fitness industry needs professionals such as personal trainers, instructors, and gym managers. There are also opportunities in sports marketing and promotions, sports journalism or commentating.
Bachelor of Health Science in Biokinetics							
BHSc: Biokinetics	Biokinetics are trained professionals who contribute to the health, well-being, and quality of life of communities, by ensuring that holistic return-to-play criteria are met for athletes following injury. The specially tailored programme incorporates clinical and theoretical exposure to aspects related to the field of Biokinetics, ensuring that graduates are educated in preventive health care, the maintenance and enhancement of physical abilities coupled with final phase rehabilitation by means of scientifically based physical activity programmes.	Full-time 4 years	370	385	385	<ul style="list-style-type: none"> • Minimum NSC statutory requirements for degree entry must be met. • Mathematics – 50%, or Technical Mathematics, or Mathematical Literacy – 65%. • Life Sciences – 50% • Satisfactory medical report 	<p>The biokineticist is involved in managing a clinical practice in the private and/or public sector. They may be employed in schools to promote health and wellness through the use of physical activity programmes.</p> <p>Other job opportunities include national, provincial and local government departments, corporate wellness as well as in the imminent National Health Insurance initiative.</p>

1. Applicant Score (AS) for Mathematics: Overall score calculated for applicants who have taken Mathematics;
2. Applicant Score (AS) for Technical Mathematics: Overall score calculated for applicants who have taken Technical Mathematics;
3. Applicant Score (AS) for Mathematical Literacy: Overall score calculated for applicants who have taken Mathematical Literacy.

SCHOOL OF CLINICAL CARE AND MEDICINAL SCIENCES

Qualification	Programme Overview	Delivery mode & duration of study	Minimum Admission Requirements				Career Opportunities
			AS for Maths	AS for Technical Maths	AS for Maths Literacy	Subject Requirements	
Bachelor of Nursing							
Bachelor of Nursing Extended curriculum	<p>This programme provides alternative university access to students who have the potential to succeed, but do not meet the minimum admission requirements for the mainstream programme.</p> <p>The purpose of the qualification is to produce quality nursing graduates who will become skilled professionals with critical thinking, analytical, reflective, and problem-solving abilities. This qualification enables students to function as clinically focused, service orientated and independent professional nurses who are able to render comprehensive care across all spheres of health within the prescribed legislative framework. The focus on more academic aspects of nursing will allow professional nurses to have a more holistic, comprehensive approach to nursing, research, and quality of patient care.</p>	Full-time 5 years	330	345	345	<ul style="list-style-type: none"> • Minimum NSC statutory requirements for degree entry must be met. • Mathematics – 35%, or Technical Mathematics or Mathematical Literacy – 55%. • Life Sciences – 50%. • Physical Sciences – 40%. • Students must be registered as student nurses with the South African Nursing Council. • Students must submit a satisfactory medical report, on the prescribed form, before registration. • All students must annually provide proof of professional indemnity insurance, before registration can be finalised. 	Professional nurses may work in private or public hospitals, comprehensive health care clinics, communities, or in private practice. South African registered nurses are not only in demand in this country, but are also sought after internationally.
Bachelor of Nursing	The purpose of the Bachelor of Nursing programme is to prepare highly skilled, independent professional nurses to provide comprehensive nursing care to individuals, groups, and communities in a variety of health-care settings. Graduates will possess a range of transferable skills, knowledge and attitudes that will enable them to make a meaningful and sustained contribution to health-care services.	Full-time 4 years	370	385	385	<ul style="list-style-type: none"> • Minimum NSC statutory requirements for degree entry must be met. • Mathematics – 50%, or Technical Mathematics or Mathematical Literacy – 65%. • Life Sciences – 60%. • Physical Sciences – 50%. • Students must be registered as student nurses with the South African Nursing Council. • Students must submit a satisfactory medical report, on the prescribed form, before registration. • All students must annually provide proof of professional indemnity insurance, before registration can be finalised. 	Professional nurses may work in private or public hospitals, comprehensive health care clinics, communities, or in private practice. South African registered nurses are not only in demand in this country, but are also sought after internationally.

Qualification	Programme Overview	Delivery mode & duration of study	Minimum Admission Requirements				Career Opportunities
			AS for Maths	AS for Technical Maths	AS for Maths Literacy	Subject Requirements	
Bachelor of Nursing (continued)	The programme comprises lectures on campus and clinical practicals in nearby general, maternity and psychiatric hospitals, and in community health fields. Practical placements are arranged for students by the Department of Nursing Sciences. This is supplemented by clinical teaching in a clinical simulated laboratory and in actual patient situations.						

Department of Radiography

Bachelor of Radiography in Diagnostic (BRad)

Bachelor of Radiography in Diagnostic (BRad)	<p>This programme prepares students for the professional field of diagnostic radiography which entails the production of x-ray images of the human body to diagnose disease.</p> <p>The theoretical and practical components of the course are covered concurrently. The practical component is undertaken at an accredited training hospital. Graduates are required by law to undertake one year of community service. This is a prerequisite for registration with the HPCSA as a radiographer.</p> <p>Please note that the closing date for all new applicants and change of qualification applicants is 30 June.</p>	Full-time 4 years	390	–	–	<ul style="list-style-type: none"> • Minimum NSC statutory requirements for degree entry must be met. • Mathematics – 50%. • Life Sciences – 50%. • Physical Sciences – 50%. • Applicants must also be physically fit. • Applicants referred for selection must submit a satisfactory medical report, on the prescribed form, to the Student Access & Enrolment Office. • Admission is subject to departmental selection. <p>Final selection takes place in September and the successful applicants will be notified in writing by November.</p> <p>A visit to an X-Ray department is a requirement for all successful applicants.</p>	Diagnostic radiographer.
-----------------------------------------------------	----------------------------------------------------------------------------------------------------------------------------------------------------------------------------------------------------------------------------------------------------------------------------------------------------------------------------------------------------------------------------------------------------------------------------------------------------------------------------------------------------------------------------------------------------------------------------------------------------------------------------------	-------------------	-----	---	---	-----------------------------------------------------------------------------------------------------------------------------------------------------------------------------------------------------------------------------------------------------------------------------------------------------------------------------------------------------------------------------------------------------------------------------------------------------------------------------------------------------------------------------------------------------------------------------------------------------------------------------------------------------------------------------------------------------------------	--------------------------

1. Applicant Score (AS) for Mathematics: Overall score calculated for applicants who have taken Mathematics;
2. Applicant Score (AS) for Technical Mathematics: Overall score calculated for applicants who have taken Technical Mathematics;
3. Applicant Score (AS) for Mathematical Literacy: Overall score calculated for applicants who have taken Mathematical Literacy.

Department of Emergency Medical Care

Qualification	Programme Overview	Delivery mode & duration of study	Minimum Admission Requirements				Career Opportunities
			AS for Maths	AS for Technical Maths	AS for Maths Literacy	Subject Requirements	
Bachelor of Emergency Medical Care (BEMC)							
Bachelor of Emergency Medical Care (BEMC)	<p>This programme aims to develop eager individuals through facilitation of a strenuous learning experience, based on international best practice guidelines. Graduates will become highly skilled, knowledgeable and independent paramedics registered with the Health Professional Council of South Africa (HPCSA) as an Emergency Care Practitioner – the highest register for paramedics.</p> <p>The EMC programme aims to meet the needs of South Africa, by producing well balanced practitioners with a thorough understanding of rescue principles and advanced patient care in the most diverse and adverse conditions required for the emergency medical care and rescue professions.</p>	Full-time 4 years	370	385	385	<ul style="list-style-type: none"> • Minimum NSC statutory requirements for degree entry must be met. • Mathematics – 50%, or Technical Mathematics, or Mathematical Literacy – 65%, • Life Sciences – 60%. • Physical Sciences – 50%. <p>Selection of students: Admission is subject to departmental selection that includes an interview as well as a medical fitness report and satisfactory physical assessment.</p>	As a paramedic you may find employment in the following areas, whether local or international: provincial or state ambulance services, a training environment such as a college or university, aeromedical services, the military, event management services, the mining industry, VIP protection, medical retail, disaster relief.

Department of Medical Laboratory Sciences

Bachelor of Health Sciences in Medical Laboratory Science

BHSc: Medical Laboratory Science	<p>Qualified medical laboratory scientists are specialised health professionals who provide vital information about a patient's state of health. Their input is necessary in the diagnosis, monitoring, and treatment of disease. The analytical and diagnostic services provided by medical laboratory scientists require a strong scientific knowledge, as well as trained reasoning ability and empathy for humanity.</p>	Full-time 4 years	390	–	–	<ul style="list-style-type: none"> • Minimum NSC statutory requirements for degree entry must be met. • Mathematics – 60%. • Life Sciences – 50%. • Physical Sciences – 50%. <p>Please note: <i>Due to limited specialised laboratory space, admission is subject to departmental selection based on academic merit, and may furthermore include an interview and/or a practical assessment. A visit to a pathology laboratory is a requirement for all successful applicants.</i></p>	<p>Medical Laboratory Scientists are highly trained professionals that may be employed in various settings that include:</p> <p>Medical diagnostic laboratories Private pathology practices, National Health Laboratory Services, blood transfusion services and forensic laboratories.</p>
-----------------------------------------	------------------------------------------------------------------------------------------------------------------------------------------------------------------------------------------------------------------------------------------------------------------------------------------------------------------------------------------------------------------------------------------------------------------------------	-------------------	-----	---	---	---------------------------------------------------------------------------------------------------------------------------------------------------------------------------------------------------------------------------------------------------------------------------------------------------------------------------------------------------------------------------------------------------------------------------------------------------------------------------------------------------------------------------------------------	--------------------------------------------------------------------------------------------------------------------------------------------------------------------------------------------------------------------------------------------------------------------------------------------------------

Qualification	Programme Overview	Delivery mode & duration of study	Minimum Admission Requirements				Career Opportunities
			AS for Maths	AS for Technical Maths	AS for Maths Literacy	Subject Requirements	
BHSc: Medical Laboratory Science (continued)	Students are required to complete a National Board Exam in their area of specialisation before they graduate and each student is required by law to register with the Health Professions Council of South Africa (HPCSA) as a student Medical Laboratory Scientist.						<p>Research institutions Graduates may become involved in private and public medical research. Medical Research Council, National Institute for Communicable Diseases and National Research Laboratory.</p> <p>Industry Quality control testing in pharmaceutical and food industries.</p>

Department of Pharmacy

Bachelor of Pharmacy (BPharm)

BPharm (Pharmacy)	<p>The purpose of this qualification is to prepare students to practise as entry level generalist pharmacists and to practise in any of the recognised fields of pharmacy.</p> <p>The programme covers four main subject areas:</p> <ul style="list-style-type: none"> Pharmacology and Applied Therapeutics, Pharmaceutical Chemistry, Pharmaceutics, and Pharmacy Practice. 	Full-time 4 years	410	–	–	<ul style="list-style-type: none"> Minimum NSC statutory requirements for degree entry must be met. NSC achievement rating of a least 50% for Home language or English First Additional Language. Mathematics – 60%. Physical Sciences – 60%. <p>SELECTION OF STUDENTS</p> <ul style="list-style-type: none"> Places are limited, and admission is subject to departmental selection. Candidates shall be selected on merit during the year preceding the first year of study. Admission selection will be applied through a process approved by the Faculty Management Committee. <p>For more information on this selection process, please refer to the Faculty of Health Sciences prospectus.</p>	<p>As experts in medicines, pharmacists are responsible for the manufacture and distribution of medicines used to treat and prevent disease in people and animals.</p> <p>Pharmacists are employed in, community (retail) and hospital pharmacies where they dispense medicines and review their use, while in the pharmaceutical manufacturing industry, they manufacture, test and market medicinal products. Educational institutions also employ pharmacy graduates as lecturers and researchers.</p>
--------------------------	-------------------------------------------------------------------------------------------------------------------------------------------------------------------------------------------------------------------------------------------------------------------------------------------------------------------------------------------------------------------------------------------------------------------------	-------------------	-----	---	---	----------------------------------------------------------------------------------------------------------------------------------------------------------------------------------------------------------------------------------------------------------------------------------------------------------------------------------------------------------------------------------------------------------------------------------------------------------------------------------------------------------------------------------------------------------------------------------------------------------------------------------------------------------------------------------------------------------------------------------------------------------------------------------------	-----------------------------------------------------------------------------------------------------------------------------------------------------------------------------------------------------------------------------------------------------------------------------------------------------------------------------------------------------------------------------------------------------------------------------------------------------------------------------------------------------------

1. Applicant Score (AS) for Mathematics: Overall score calculated for applicants who have taken Mathematics;
2. Applicant Score (AS) for Technical Mathematics: Overall score calculated for applicants who have taken Technical Mathematics;
3. Applicant Score (AS) for Mathematical Literacy: Overall score calculated for applicants who have taken Mathematical Literacy.

Qualification	Programme Overview	Delivery mode & duration of study	Minimum Admission Requirements				Career Opportunities
			AS for Maths	AS for Technical Maths	AS for Maths Literacy	Subject Requirements	
BPharm (Pharmacy) <i>(continued)</i>	<p>Research elective courses are offered in the final year of study. In order to register as a pharmacist with the South African Pharmacy Council (SAPC), after obtaining the BPharm degree, students must successfully complete a one year internship and a one year compulsory community service. The internship year may be done in hospitals, community (retail) pharmacies, the pharmaceutical manufacturing industry, or in academia if continuing with postgraduate studies.</p> <p>Please note that the closing date for all BPharm applications is 30 June.</p>						

School of Medicine

Bachelor of Medicine and Bachelor of Surgery (MBChB)

Bachelor of Medicine and Bachelor of Surgery (MBChB)	<p>The purpose of Nelson Mandela University's MBChB programme is to train caring, competent and committed medical doctors who will work as members of inter-professional teams, to practice comprehensive primary health care in holistic and culturally sensitive ways.</p> <p>The programme focuses on training students to provide preventive, promotive, therapeutic and rehabilitative health services and will develop medical doctors who are able and willing to serve and improve the health of individuals, families and communities in urban, peri-urban and rural areas of the Eastern Cape in particular, and South Africa as a whole.</p>	Full-time 6 years	430	–	–	<ul style="list-style-type: none"> • Minimum NSC statutory requirements for degree entry must be met. • English (home language or first additional language) - 60%. • Mathematics – 60% • Physical Sciences – 60%. • Life Science – 60%. 	The MBChB degree prepares graduates to register as medical practitioners after they have completed their required internship (two years) and community service (one year).
-------------------------------------------------------------	---------------------------------------------------------------------------------------------------------------------------------------------------------------------------------------------------------------------------------------------------------------------------------------------------------------------------------------------------------------------------------------------------------------------------------------------------------------------------------------------------------------------------------------------------------------------------------------------------------------------------------------------------------	-------------------	-----	---	---	---------------------------------------------------------------------------------------------------------------------------------------------------------------------------------------------------------------------------------------------------------------------------------------------	----------------------------------------------------------------------------------------------------------------------------------------------------------------------------

Qualification	Programme Overview	Delivery mode & duration of study	Minimum Admission Requirements				Career Opportunities
			AS for Maths	AS for Technical Maths	AS for Maths Literacy	Subject Requirements	
Bachelor of Medicine and Bachelor of Surgery (MBChB) <i>(continued)</i>	<p>To be allowed to register as a doctor (medical practitioner), a student must obtain the MBChB degree, followed by a two-year internship, and one year of community service. It is essential that students who enter the programme are prepared for, and suited to, the training which aims to produce graduates who are primary health care-oriented practitioners.</p> <p>Closing date for applications: The closing date for all MBChB applications is 30 June. Only a limited number of students are selected annually for the first year of study of the MBChB and meeting the minimum admission requirements does not guarantee a place. Selection guidelines that consider academic and non-academic merit are approved annually by the Medical Programme Selection Committee.</p>				<ul style="list-style-type: none"> Students must be registered, and will be assisted to do so, as medical students with the Health Professionals Council of South Africa (HPCSA). An HPCSA registration fee is incurred in the first and final year of study and will be factored into the student fees. All students must annually provide proof of professional indemnity insurance, before registration can be finalised. The Medical School will facilitate this process. <p>SELECTION OF STUDENTS</p> <ul style="list-style-type: none"> Applicants will be admitted as per MBChB Admission Guidelines. Places are limited and admission is subject to the Medical Selection Committee processes. Candidates will be selected on merit during the year preceding the first year of study with consideration being given to those applying from non-fee-paying schools. Compliance with the minimum admission requirements does not necessarily guarantee admission to the Medical programme due to limited spaces. Current MandelaUni students in the Faculties of Health Sciences or Science, or students in such faculties from other tertiary institutions need to refer to the Faculty of Health Sciences prospectus for their specific admission requirements and selection procedure, over and above which is listed here, and would need to commence the degree from the first year. 	<p>Thereafter, they may practise as general practitioners (medical doctors) in hospitals or in private general practice, conduct and/or participate in research/teaching. Additional postgraduate study would be required for specialisation in a specific field of medicine.</p>	

1. Applicant Score (AS) for Mathematics: Overall score calculated for applicants who have taken Mathematics;
2. Applicant Score (AS) for Technical Mathematics: Overall score calculated for applicants who have taken Technical Mathematics;
3. Applicant Score (AS) for Mathematical Literacy: Overall score calculated for applicants who have taken Mathematical Literacy.

Contact Details

	Gqeberha Campuses	George Campus
General Enquiries	041 504 1111	044 801 5111/5999
Student Access & Enrolment Office	041 504 1111/4993/4811/1504/1018	044 801 5194
Library and Information Services	041 504 2294/2298/3410/3851/1269	044 801 5151/5152
Financial Aid	041 504 1111/9971/9926/1242/3096	044 801 6136
Emthonjeni Student Wellness	041 504 2511/ 3222/ 3854 /1106	044 801 5047
Student Housing	041 1415/1416/3690 (On-Campus) 041 504 2921 (Off-campus)	044 801 5034/5136/5067 (On-campus) 044 801 5139 (Off-campus)
Student societies and clubs	041 504 3229/3351/3894/1235	044 801 5029
Madibaz Sport	041 504 2165	044 801 5037
Student Health Services	041 504 2174/1149/3762/1373	044 801 5062
Universal Accessibility & Disability Services (UADS)	041 504 2313	044 801 5041
Mandela International Office	041 504 2161	

Address of the University

PO Box 77000
Nelson Mandela University
GQEBERHA
6031

E info@mandela.ac.za

W mandela.ac.za



Address of the George Campus

Nelson Mandela University
George Campus
Private Bag X 6531
GEORGE
6530

E george-info@mandela.ac.za

W georgecampus.mandela.ac.za

Our Vision

To be a dynamic African university, recognised for its leadership in generating cutting-edge knowledge for a sustainable future.

Our Mission

To offer a diverse range of life-changing educational experiences for a better world.

To achieve our vision and mission, we will ensure that:

- Our values inform and define our institutional ethos and distinctive educational purpose and philosophy.
- We are committed to promoting equity of access and opportunities so as to give students the best chance of success in their pursuit of lifelong learning and diverse educational goals.
 - We provide a vibrant, stimulating and richly diverse environment that enables staff and students to reach their full potential.
 - We develop graduates and diplomates to be responsible global citizens capable of critical reasoning, innovation, and adaptability.
 - We create and sustain an environment that encourages and supports a vibrant research, scholarship and innovation culture.
- We engage in mutually beneficial partnerships locally, nationally and globally to enhance social, economic, and ecological sustainability.

Our Values



Disclaimer: All reasonable steps have been taken to ensure that the information contained in this guide was correct at the date of publication. All information listed is subject to change and may be updated without prior notification. Nelson Mandela University reserves the right to make changes to the programme details, rules, admission requirements, duration and delivery of courses as published in this guide. Prospective applicants are advised to consult the Student Access & Enrolment Office, the University website or relevant faculties prior to applying.

