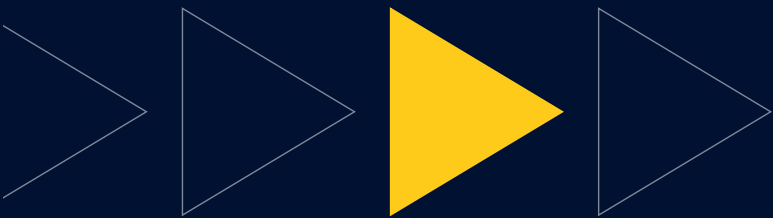


# NELSON MANDELA UNIVERSITY



**George**  
Campus



### **Faculty of Business & Economic Sciences**

Accounting  
Business Management  
Business Studies  
Economics  
Management  
Marketing  
Tourism

### **Faculty of Engineering, the Built Environment & Technology**

Information Technology: User Support Services

### **Faculty of Science: Natural Resource Science and Management Cluster**

Agricultural Management Department  
Forestry Programme  
Wood Technology Programme  
Conservation Management Department



#### **Student Access & Enrolment Office**

044 801 5194

[george-info@mandela.ac.za](mailto:george-info@mandela.ac.za)  
[georgecampus.mandela.ac.za](http://georgecampus.mandela.ac.za)

*Prospective students are advised to contact the Student Access & Enrolment Office prior to applying or to refer to the faculty website or prospectus for more information regarding any qualifications being offered on the George Campus.*

# Message from the Vice-Chancellor

## Welcome

It is my singular honour and privilege to welcome you to the Nelson Mandela University family. Our University is named after the iconic global statesman Nelson Rolihlahla Mandela, who transformed this country through his unwavering commitment to social justice and equality.

Our vision is to be a dynamic African university, recognised for its leadership in generating cutting-edge knowledge for a sustainable future. That is why we are committed to providing inclusive and transformative education that will prepare you to succeed in a diverse and globalised world.

The idea of 'the African university' is for us not simply a catchy byline or tagline, but an ethical injunction that should make clearer the gifts of our country and continent, including its peoples, knowledges, cultures, and languages. In short, the African university should offer us a different way of encountering the world.

Our academic and professional programmes range from certificate-level through to research doctorates, and our qualifications are recognised and accredited by the relevant professional bodies, locally and, in some cases, internationally.

## A wide-range of academic programmes are offered in seven faculties:

- Business & Economic Sciences
- Education
- Engineering, the Built Environment & Technology
- Health Sciences
- Humanities
- Law
- Science

We prepare our graduates to become well-rounded citizens, that are socially aware on a global scale, capable of making a difference in whatever path they choose.

As you will see from this guide, Nelson Mandela University offers you an ideal environment and facilities, excellent learning opportunities, a wide spectrum of beyond-the-classroom activities, and a solid values-driven foundation on which to pursue your future dreams.

We look forward to welcoming you to Nelson Mandela University in 2027.

*Prof Sibongile Muthwa*

Prof Sibongile Muthwa  
Vice-Chancellor

# Umyalezo osuka kuSekela-Ngqonyela

## Wamkelekile

Yinyhweba newonga elilodwa ukunamkela kusapho lweYunivesithi iNelson Mandela. IYunivesithi yethu ithiywe emva kwenjojeli yehlabathi uMongameli uNelson Rolihlahla Mandela, owenza inguqu kweli lizwe ngokuzibophelela kwakhe okungagungqiyo kubulungisa bezentlalo kunye nomakulinganwe.

Umbono wethu kukuba yiYunivesithi yaseAfrika eshukumisayo, ethathelwa ingqalelo ngesikhokelo sayo sokuvelisa ulwazi olungazange lwabakho ukulungiselela ikamva elizinzileyo. Kungoko sizibophelele ekunikazeleni ngemfundo engenguqu noqukaniso eza kukulungiselela ukuba uphumelele kwihlabathi leyantlukwano elibumbeneyo.

Ingcamango yeYunivesithi yaseAfrika ayikokutsala nje amehlo, koko yindlela elungileyo nenocwangco yokuziphatha eza kwenza kucace iziphiwo zelizwe lethu nelizwekazi, ezibandakanya abantu, ulwazi, kunye neelwimi. Ngamafutshane, iYunivesithi yaseAfrika mayisinike indlela eyahlukileyo yokuqubisana nehlabathi.

Iinkqubo zethu kwezemfundo nezobungcali ngokwecandelo ukusukela kwinqanaba lesatifikayeti ukuya kuphandonzulu lobuGqirhalwazi, zithathelwa ingqalelo kwaye zamkelwe ngokusemthethweni ngamaqumrhu ezobungcali efanelekileyo, alpha ekhaya, maxa wambi awamazwe ngamazwe.

## Intlaninge yeenkqubo zezemfundo inikezelwa kwiifakhalthi ezisixhenxe:

- EzeNzululwazi kwezoShishino nezoQoqosho
- EzeMfundo
- EzobuNjineli, iNdawo yoLwakhiwo nezobuChwepheshe
- EzeNzululwazi kwezeMpilo
- EzoLuntu
- EzoMthetho
- EzeNzululwazi

Sixhobisa izithwalandwe zethu ukuba zibe ngabemi abazinzileyo, abanolwazi ngezentlalo kwisigaba sehlabathi, abakwaziyo ukwenza umahluko nakweyiphi na inkalo abayikhethileyo.

Njengoko uza kubona kwesi sikhokelo, iYunivesithi iNelson Mandela inikezela ngendawo nezixhobo ezizizo, amathuba okufunda agqwesileyo, nothotho lwemisebenzi yangaphaya kwegumbi lokufunda, kunye nesiseko esiluhlalima seenqobo ezisemgangathweni apho unokufezekisa amaphupha ekamva lakho khona. Sijonge phambili ekunamkeleni kwiYunivesithi iNelson Mandela ngowama2027.

*Njing Sibongile Muthwa*

Njing Sibongile Muthwa

# Boodskap van die Visekanselier

## Welkom

Dis is my besondere eer en voorreg om jou welkom te heet by Nelson Mandela Universiteit-se familie. Ons Universiteit dra die naam van die ikoniese wêreldleier Nelson Rolihlahla Mandela, wat ons land getransformeer het deur sy onvermoeide toewyding tot sosiale geregtigheid en gelykheid.

Ons visie is om 'n dinamiese Afrika-Universiteit te wees, wat erken word vir ons leierskap in die ontwikkeling van vooruitstrewende kennis vir 'n volhoubare toekoms. Daarom is ons daartoe verbind om inklusiewe en transformerende onderwys te bied wat jou sal voorberei om in 'n diverse en geglobaliseerde wêreld te slaag.

Vir ons is die idee van 'n "Afrika-Universiteit" nie bloot 'n treffende slagspreuk nie, maar 'n etiese oproep wat die rykdom van ons land en die kontinent duideliker moet laat uitstaan — insluitend sy mense, kennisstelsels, kulture en tale. Kortliks, die Afrika-Universiteit behoort vir ons 'n ander manier te bied om die wêreld te benader.

Ons akademiese en professionele programme strek vanaf sertifikaatvlak tot by navorsingsdoktorsgrade, en al ons kwalifikasies word erken en geakkrediteer deur die toepaslike professionele liggame, plaaslik en in sommige gevalle internasionaal.

## 'n Wye reeks akademiese programme word in sewe fakulteite aangebied:

- Besigheids- en Ekonomiese Wetenskappe
- Opvoedkunde
- Ingenieurswese, die Beboede Omgewing en Tegnologie
- Gesondheidswetenskappe
- Geesteswetenskappe
- Regsgeleerdheid
- Natuurwetenskappe

Ons berei ons gegradueerdes voor om veelsydige burgers te word wat wêreldwyd sosiaal bewus is en in staat is om 'n betekenisvolle verskil te maak, watter rigting hulle ook al volg. Soos jy in hierdie gids sal sien, bied Nelson Mandela Universiteit jou 'n ideale omgewing en uitstekende fasiliteite, uitmuntende leergeleenthede, 'n wye spektrum van aktiwiteite buite die klaskamer, en 'n stewige waardegedrewe grondslag, waarop jy, jou toekomsdrome kan bou.

Ons sien daarna uit om jou in 2027 by Nelson Mandela Universiteit te verwelkom.

*Prof Sibongile Muthwa*

Prof Sibongile Muthwa  
Visekanselier



# About Nelson Mandela University

Nelson Mandela University is the only university in the world that carries the name of Nelson Rolihlahla Mandela. We are committed to providing a welcoming and inspiring environment that is supportive, innovative, and diverse. Our students need to feel they are in a place of learning and discovery, founded on strong, egalitarian values that encourage them to express themselves, stretch themselves, and seek new solutions for a better world.

The University embraces Nelson Mandela's challenge to be "caring, responsible and innovative", and recognises the importance of continuously growing and adapting in the pursuit of knowledge, emancipation, and lifelong learning.

The university boasts more than a century of experience in quality higher education, research, and technological innovation. We unite the best traditions of both the academic and technological worlds – from entrance level (certificate) through to research level (PhD).

- We are the largest higher education institution in the Eastern and Southern Cape.
- 34 682 students are enrolled on seven different campuses – six in Nelson Mandela Bay (Gqeberha, formerly Port Elizabeth), and one in George.
- Programmes are housed within seven faculties (Business & Economic Sciences; Education; Engineering, the Built Environment & Technology; Health Sciences; Humanities; Law and Science), and in some cases, programmes are duplicated on more than one campus.
- The university's George Campus is situated at the foot of the Outeniqua Mountains in the picturesque coastal town of George.

With their spectacular natural surroundings – from beaches to mountains to game reserves – Nelson Mandela Bay and George are ideal places to spend your student years, offering all the advantages of city living in a vibrant and multi-cultural environment.

## Student services

A wide range of student services and support facilities are offered on university campuses to assist you in every aspect of student life – from what to study, to finding suitable employment after graduation. The university offers a variety of social and cultural activities, which means you can have fun while you study. There is an extensive range of sport codes, associations, societies, clubs, and facilities, allowing you to make new friends, interact with your fellow students and explore subjects of mutual interest.

**Below are some of the various services offered to our students:**

### Library and Information Services

Nelson Mandela University has a network of well-stocked libraries, computer laboratories, and student learning centres which enable students to obtain quality information resources and services required to excel in their various academic courses. These centres are located on all campuses and offer students a quiet space for studying.

## Student Health Services

Students have access to a comprehensive primary health care service on every campus, and qualified medical personnel to assist with any health matters which may arise. All services are rendered by registered health care professionals e.g., professional nurses, medical doctors, and registered counsellors.

## Emthonjeni Student Wellness

Emthonjeni Student Wellness consist of a team of professionally trained psychologists (clinical, educational, counselling and research psychologists), registered counsellors and intern psychologists who are registered with the Health Professions Council of South Africa. The centre helps students with career choices, job-seeking skills, and any social, personal, or academic problems which they may experience while at university. The centre offers advice in areas such as time management, study methods, personal, social, and emotional wellness, as well as career planning and employment readiness.

## Student Development & Governance (SDG)

This department contributes towards the holistic development of students. The core functions of this department are the training and development of student leadership, the coordination of student life & events, and supporting student governance structures such as the Student Representative Council (SRC), the Student Housing Council; faculty representatives, the Sports Council, Oppidani and Rag. They also provide students with advice on the various student societies that you could join. There are currently 29 societies which students can join and these are categorised as academic, religious, developmental, social responsibility and political.

## Arts, Culture & Heritage

Arts, Culture & Heritage focuses on the holistic development of students by creating opportunities for their participation in the arts. Arts and Culture provides an environment in which students can exercise and develop their need for cultural and artistic expression. You are provided with the opportunity to express your talents by joining a wide range of interactive, cultural, and active societies. These societies are diverse and vary from performing arts, dancing, music, drama, and choirs.

## Student Representative Council (SRC)

The SRC is elected annually in a democratic election to represent the interest of students. The SRC is the only body which the university officially recognises as speaking on behalf of the students.

## Oppidani (day students)

Students who do not live in a campus residence are known as Oppidani students. All non-residential Nelson Mandela University students are automatically members of the Oppidani House and are known as Oppies. Although Oppies live off campus, participation in non-academic life is encouraged.

## Societies

Students can become a member of numerous student-run societies enabling them to have fun with likeminded students while gaining valuable leadership, communication, and social skills. There are presently 64 societies active on our various campuses, and these societies are categorised as either academic, religious, developmental, social responsibility or political.

## Madibaz Youth Entrepreneurship Lab

The Madibaz Youth Entrepreneurship Lab aims to build an enabling entrepreneurial ecosystem at Nelson Mandela University through the advancement of support to new and existing youth entrepreneurs as well as through collaborations in areas of entrepreneurship development. The Entrepreneurship Lab also aims to embrace entrepreneurial mindsets and ethos amongst the students at Nelson Mandela University through practical entrepreneurship workshops, symposiums, mentorship, as well as opportunity for student entrepreneurs to run businesses on-campus.



# Madibaz Sport


Madibaz sport offers a wide variety of competitive and recreational sport programmes for students and staff, as well as the wider university community. These programmes provide students with the opportunity to participate in various sport and recreational activities ranging from informal social games to highly competitive leagues where skills are tested against the best in the province and country. In addition, through the various high-performance programmes coordinated by the Madibaz High Performance Complex, the university plays a major role in the process of developing elite and potentially elite players.

Madibaz sport also provides club members with excellent sport facilities, scientific based coaching programmes, which includes organisational and administrative support. Well-equipped health and fitness centres offer professional gym facilities at student prices, and aid in sport performance testing, sport specific training and injury rehabilitation.



The following sport codes are offered on the various university campuses:

Athletics – Basketball – Boxing – Chess – Cricket – Football – Futsal – Golf – Hockey – Karate – Netball – Rugby – Rowing – Squash – Surfing – Swimming – Table Tennis – Tennis – Volleyball – Water polo



## MADIBAZ

All teams have nicknames, or names by which they are popularly known. Those who work, study and play sport at Nelson Mandela University proudly refer to themselves as Madibaz. In addition to our name, the university also boasts a dolphin mascot, named Diba.

# Admission to Nelson Mandela University

## Overview

- Applications for early admission (excluding MBChB, BPharm & BRad applications) should be submitted by **3 August 2026**. Late applications (excluding MBChB, BPharm & BRad applications) will however be considered after this date, based on academic merit, until **30 September 2026**. Places are limited and it is therefore in your best interest to submit your application early.
- MBChB applications close on **30 June 2026**. Places in the MBChB degree are limited and it is therefore in your best interest to submit your application early.
- Bachelor of Pharmacy (BPharm) and Bachelor of Radiography (Diagnostic) applications also close on **30 June 2026**. Places in the Bachelor of Radiography (Diagnostic) & Bachelor of Pharmacy (BPharm) degrees are limited, and it is therefore in your best interest to submit your application early.
- Prospective students must meet the statutory minimum requirements based on the National Senior Certificate (NSC), or equivalent school-leaving certificate for admission to a higher certificate, diploma, or degree qualification, in order to be considered.
- Admission to an undergraduate programme will be further determined by an applicant's Applicant Score (AS).
- Submission of a complete application does not mean that you have been accepted as a student, or that you may register. All prospective students are selected in accordance with the admissions policy of the university, and applicants will be notified of the outcome of their application by the Student Access and Enrolment Office.
- If you are currently in Grade 12, conditional acceptance is based on your **Applicant Score (AS)** obtained in your Grade 11 final, or Grade 12 June or Grade 12 September examinations. However, if you have already matriculated then your final Grade 12 NSC, SACAI, or IEB results will be used to evaluate your application for conditional acceptance. Please note that the final decision (to be made in January) is based on your final Grade 12 NSC/SACAI/IEB exam results.
- Applicants with the highest Applicant Scores (AS) for a programme are prioritised for final selection, also called a firm offer - until all spaces are taken. Final selection only takes place in January when final Gr 12 examination results are available. To increase your chances of acceptance applicants will need to have achieved excellent results in their final exam or have achieved far more than the minimum admission criteria required for a programme, to be considered.
- Once you've submitted your application you may be required to submit a portfolio of evidence, audition or attend an interview. Your admission decision will then only be made once one, or all of these additional requirements have been completed.
- In addition to the general university admission requirements, each programme also has its own specific requirements.
- Applicants with alternate, international, or foreign qualifications must satisfy the requirements laid down by the Matriculation Board to qualify for a certificate of exemption for a particular alternate, international or foreign school-leaving qualification. These requirements are contained in Government Gazette No. 31674, 5 December 2008, and can be found on the Universities South Africa (USAF) website <https://mb.usaf.ac.za/sc-government-gazette-5-december-2008/>. Applications for such certificates must be made to the Matriculation board directly: <https://mb.usaf.ac.za/>
- In the case of applications by candidates who have studied at other higher education institutions accredited by the South African Qualifications Authority (SAQA), the results obtained at such institutions will be considered, together with their academic record and certificate of conduct.
- There are limits to the number of students that can be admitted to each programme.
- **If a programme is full, you may be denied admission even though you meet the minimum requirements.**

- Prospective students who **matriculated prior to 2008** must please contact the university's Student Access & Enrolment Office to determine their admission requirements.
- For more information on the application process please contact **041 504 1111** or visit our website <https://www.mandela.ac.za/Study-at-Mandela> before applying.
- **Please note that admission requirements are subject to change. Information in this programme guide was correct as of April 2026.**



# Admission Requirements

## National Senior Certificate (NSC)

- The table below explains what the minimum statutory requirements for each qualification level are (Higher Certificate, Diploma or Degree).
- The university has also set its own additional minimum entry requirements.

Qualification	Minimum statutory entry requirement
<b>Higher Certificate</b>	Pass the NSC, with a minimum of 30% in the language of learning and teaching of the higher education institution, together with any other university requirements.
<b>Diploma</b>	Pass the NSC with a minimum of 30% in the language of learning and teaching of the higher education institution, coupled with an achievement rating of 3 (40–49%) or better in four recognised NSC 20-credit subjects, together with any other university requirements.
<b>Bachelor's Degree</b>	Pass the NSC with a minimum of 30% in the language of learning and teaching of the higher education institution, coupled with an achievement rating of 4 (50–59%) or better in four NSC 20-credit subjects together with any other university requirements.

Please note that the achievement of the minimum NSC admission requirements does not necessarily guarantee admission to any programme or field of study at Nelson Mandela University.

### How to calculate your Applicant Score (AS)

- First look-up the **Applicant Score (AS)** for the qualification you are applying for – also note any required subjects.
- Your Applicant Score (AS) will be different if you took Mathematics, Mathematical Literacy or Technical Mathematics at school.
- Your Applicant Score (AS) is calculated using **six** subjects. Please note that Life Orientation (LO) is excluded.
- Write down your Grade 12 subjects and the most recent percentage (%) obtained in each subject (**NO** Gr 12 March results).
- You **MUST** include the results for the following **three fundamental subjects: 1)** Home language; **2)** 1st Add. Language; and **3)** Maths; or Maths Lit; or Technical Maths.
- For applicants with seven Grade 12 NSC/IEB subjects, their AS is calculated by adding the percentages for their six 20-credit subjects (**Note** that the Life Orientation percentage is not included as it is a 10-credit subject). This gives a score out of 600.
- In addition, for those applicants from quintile 1 to 3 schools who attain 50% or higher for Life Orientation, 7 additional points are added to their score out of 600 to arrive at their final AS.

- Compare your AS & subject requirements to the minimum needed for the qualification you want to apply for.
- If your Applicant Score (AS) & subject requirements are below the minimum required, you will need to consider another qualification for which you do qualify.

\* All South African **public** ordinary schools are categorised into five groups, called quintiles. Quintile 1 to 3 are non-fee-paying schools, while Quintiles 4 & 5 are fee paying schools.

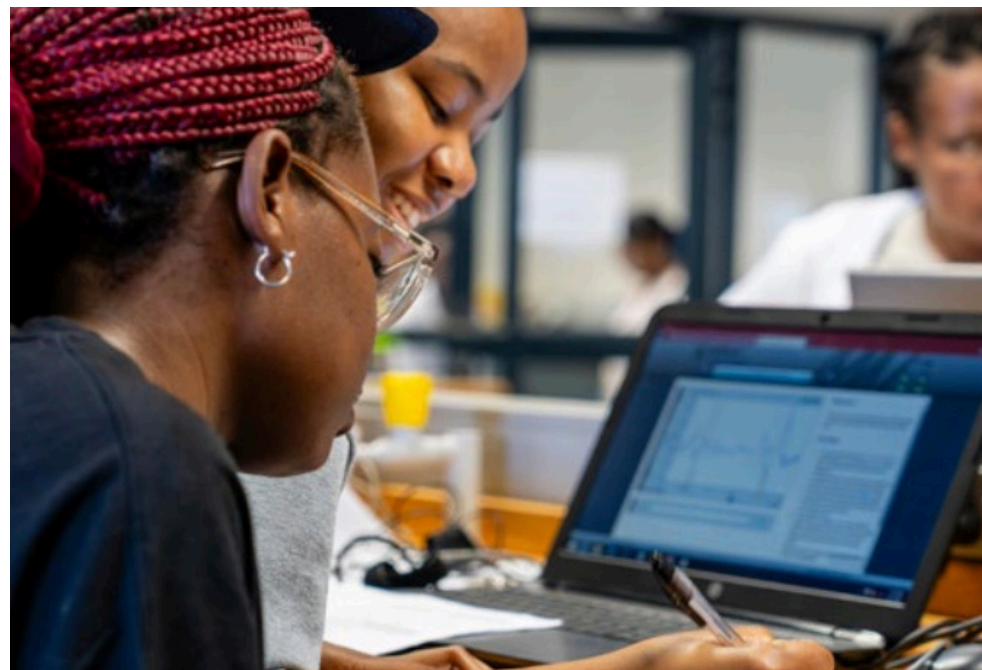
The table below provides an example of how to calculate the AS for:

- Applicant 1** who has 7 NSC Grade 12 subjects, who is applying for a programme with Life Science and Physical Science as required subjects: and
- Applicant 2** who is applying for the same programme, but who took 8 subjects in Grade 12.
- Applicant 3** who is applying for the same programme, but who is from a quintile 1, 2 or 3 school.

NSC Subject	Applicant 1		Applicant 2		Applicant 3 from quintile 1 to 3 school	
	% obtained	% used to calculate AS	% obtained	% used to calculate AS	% obtained	% used to calculate AS
isiXhosa (Home Language)	78	78	78	78	78	78
English (1st Additional Language)	60	60	60	60	60	60
Mathematics	65	65	65	65	65	65
Life Science	62	62	62	62	62	62
Physical Science	50	50	50	50	50	50
History	–	–	60	60	–	–
Geography	55	55	55	–	55	55
Life Orientation	88	–	88	–	88 LO>50%	7
<b>APPLICANT SCORE (AS)</b>		<b>370</b>		<b>375</b>		<b>377</b>

# How do you apply?

- Applicants can apply online by logging on to [www.mandela.ac.za/Study-at-Mandela](http://www.mandela.ac.za/Study-at-Mandela)
- Ensure that you meet the minimum **Applicant Score (AS) and subject requirements** before submitting your completed online application and supporting documentation.
- Please note that certain qualifications have additional selection processes, for example a portfolio of evidence, interview, or fitness/medical tests.
- **No application fee** is required for South African citizens, but there is an application fee for International Students.
- **Remember to include your cell number on your form**, as we will be sending you your application status and other important information via this number (Please do not include +27 or any spacing when you enter your cell number).
- Applications for early admission should be submitted by **3 August 2026**.
- Late applications will still be considered up to **30 September 2026**, but as space is limited, we advise applicants to submit/complete their application form before the August closing date.
- MBChB, BPharm and Bachelor or Radiography (Diagnostic) qualifications close earlier (**30 June 2026**) than the dates listed above. Applicants need to consult the student access & enrolment office, website, or faculty to determine annual closing dates. No late applications will be considered after the published closing date.



## Online applications

- To apply online, you will need your **own cell number** and a valid **personal email address** (should you not have an e-mail account, please open one before proceeding with your online application).
- Online application(s) are **divided into two sections** (please ensure you complete both).
- **Section 1** (applicant profile) – before applying online you will first need to create an applicant profile/account, before you will be able to access the online application platform. This does not mean that you've applied, nor will you be considered for admission yet.
- Once created, you'll be sent an e-mail with a link in which you need to verify your e-mail address (should you not have received this e-mail, please look in your spam mailbox before contacting the University).
- Using the link provided, login using your newly created username and password to begin your online application.
- **Section 2** (online application) - complete all relevant sections and upload the support documents required, to finalise your online application. If you have indicated you require student housing, a separate online application will need to be completed.
- Guidelines on how to apply for student housing will be emailed to the account you have registered with.
- Remember to include **all your supporting documentation** with your online application as a PDF or JPEG formatted attachment.
- No changes can be made after you have submitted your application form. If you need to update your online application, refer to the online application guideline document for the process you need to follow.
- Should you require support in completing your online application, you may contact our Contact Centre on **041-504 1111**, or e-mail: [info@mandela.ac.za](mailto:info@mandela.ac.za); or you can also log a query on <https://crm.mandela.ac.za>

## Important documentation

In order for the university to finalise your application you are requested to submit the following support documentation with your application:

- A certified copy of your **identity document** (ID document compulsory for SA Citizens – your application cannot be processed without a certified copy of your ID. You may also provide your ID number or serial number that appears on your birth certificate should you still be waiting for your ID Document to be issued).
- A certified copy of **your latest school results** (grade 11 final, or grade 12 June/September results, or final school leaving results if you have already completed Gr 12 (e.g., if you are currently at school and apply in August submit your June results). **No grade 12 March results.**
- **Declaration by your parent / legal guardian / surety form** (downloaded from the university website),
- A certified copy of your **parent / legal guardian / surety's identity document.**
- Completed **disability assessments form** (if applicable).
- Full **official academic record(s) and certificate(s) of conduct** from previous higher education institution(s) (if applicable).
- Copy of your current **residential / home or postal address.**

**NB:** Please note that your **student number/identity number** must clearly be indicated on all documentation submitted. Your application form cannot be processed if you do not include all supporting documentation with your application.



## Extended Curriculum Programmes

The transition from school to university is challenging for most young people. It is, however, even more dramatic for learners who for various reasons, find that they do not meet the minimum admission requirements of the programme of their choice. Nelson Mandela University offers a wide range of extended curriculum programmes that provide such students with the opportunity to enroll for an extended programme in order to obtain the same mainstream qualification at the end of their study career. In practice, it implies that a student will complete a three-year degree or diploma programme in four years. These programmes provide an environment in which academic support and skills development are integrated with regular academic work. Additional support courses and activities in the first two years of the extended programme assist students to adapt to the university's learning environment in order to follow the mainstream courses during the last two years of study. International/Foreign/NCV level 4 & senior certificate equivalency conversion table.



# International/Foreign/NCV level 4 & senior certificate equivalency conversion table

- South African and International applicants with International, NC(V) level 4 or Foreign School-Leaving certificates, should use the table below to calculate an equivalent Applicant Score (AS) for admission, based on percentages obtained in such certificates.
- Applicants with international or foreign qualifications must also satisfy the requirements laid down by the Matriculation Board to qualify for a certificate of exemption for a particular international or foreign school-leaving qualification. Applications for such certificates must be made to the Matriculation board directly: <https://mb.usaf.ac.za/>
- Applicants will have to comply with the minimum Applicant Score (AS) set for the UG qualification they wish to apply for, as well as meet any other additional subject requirements directly.
- To calculate your Applicant Score (AS) use the symbols/achievement rating/percentages obtained in your school-leaving examinations in order to convert them to an equivalent achievement standard on the National Senior Certificate (NSC).
- Your AS is calculated using six subjects, which must include the language(s) and subjects required for admission but excluding LO

Subject % to use when calculating the Applicant Score*	Senior Cert HG	Senior Cert SG	HIGCSE NSSC HL	IGCSE NSSC OL	O-LEVEL	AS	A-LEVEL	IB HL	IB SL	KCSE	NC(V)4** Fundamental	NC(V)4 Vocational
115							A*, A	7			Use your actual percentage(s) obtained on your statement of results / certificate.	
105							B	6				
95	A		1			A	C	5	7	A+,A		
85	B		2			B	D	4	6	A-		
75	C	A	3	A	A	C	E	3	5	B+		5 (90-100%)
65	D	B		B	B	D		2	4	B, B-		5 (80-89%)
55	E	C	4***	C	C	E		1	3	C+		4 (70-79%)
45	F	D		D	D				2	D		3 (50-69%)
35	FF	E		E	E				1	E		2 (40-49%)
25	G, GG, H	F, FF, G, GG, H		F, G						F, G		1 (0-39%)

\* It is recommended that the midpoint of the NSC percentage range be used when calculating the AS, as the results of the above qualifications (excluding the NCV Fundamentals) are reported as either a symbol or numeric value. The range of Subject % exceeds the 100% mark to allow for inclusion of the A Level and IB HL as both qualifications are considered to be at a higher level than the NSC.

\*\* As the Fundamental subjects are considered to be at the same level as the NSC, use the actual percentage obtained for Language and Mathematics/Mathematical Literacy. For the four Vocational Subjects use the values in the relevant column of the table above.

\*\*\* A symbol 4 obtained for a NSSC Higher Level / HIGCSE subject is regarded as a pass mark in the equivalent Ordinary or IGCSE level subject except for a First Language subject which becomes a 2nd language pass if another language is also passed (From: <https://mb.usaf.ac.za/paragraph-15/>).

## Key:

NSC - National Senior Certificate

O-Level - Ordinary level

Senior Cert HG - Senior Certificate Higher Grade

AS - Advanced Subsidiary

Senior Cert SG - Senior Certificate Standard Grade

A-Level - Advanced level

HIGCSE - Higher International Graduate Certificate of Secondary Education

IB HL - International Baccalaureate Schools (Higher Levels)

IGCSE - International Graduate Certificate of Secondary Education

IB SL - International Baccalaureate Schools (Standard Levels)

NSSC HL - Namibian Senior Secondary Certificate Higher Levels

KCSE - Kenyan Certificate of Secondary Education

NSSC OL - Namibian Senior Secondary Certificate Ordinary Levels

NC(V) 4 - National Certificate Vocational Level 4



## Financial facts

- Before registering as a student, you need to determine whether you will have sufficient funds to finance your studies. Costs involved in higher education include enrolment fees, registration and tuition fees, textbooks, stationery, transport, meals, accommodation, materials and laboratory fees, sports equipment, and general living expenses.
- Nelson Mandela University offers financial assistance to full-time students in the form of bursaries, merit awards, and scholarships, for top academic achievers.
- A number of sport grants are also available for top sports performers and those who show outstanding potential.
- Admission to the university does not imply that you will be eligible for a merit award, scholarship, or bursary.
- Applications for NSFAS funding must be made directly on the NSFAS website.
- For more information on financial assistance, contact the **Financial Aid Office** on (041) 504 1111, or visit their webpage [www.mandela.ac.za/finaid](http://www.mandela.ac.za/finaid)

## Scholar Merit awards

- Scholar Merit Awards are awarded to new first-year undergraduate students who have achieved excellent academic results in their final grade 12 NSC/IEB examinations. Students must have passed Grade 12 not more than 2 years prior to their first year of study. If you passed Gr 12 the year adjacent to your first year of study, then a Previous Activity Form should be completed and submitted to Financial Aid office, North Campus before 31 March. Your registration at this University must also be your first-time registering at a Higher Education institution. The rand value of this award is determined on a sliding scale between a predetermined minimum and maximum value and is awarded to first-year students who qualify by the Financial Aid Office.

### Your Applicant Score (AS) is calculated as follows:

- For applicants with seven or more Grade 12 subjects, your AS is calculated by adding the percentages for your six best subjects. This gives a score out of 600. Life Orientation (LO) is not included in your AS calculations for applicants from quintiles 4 and 5 schools.
- For those applicants from quintile 1, 2 or 3 school\* who attain 50% or higher for Life Orientation, 7 points may be added to your score out of 600 to arrive at your final AS.

The rand value of each award is determined on a sliding scale of AS scores according to the table below.

Applicant Score (AS)	Amount
Band 1: 500 and above	R 16 500*
Band 2: 470 – 499	R 12 500*
Band 3: 410 – 469	R 8 500*

**Disclaimer:** "The university reserves the right to amend the award values and policy with regards to the bursary and may in its sole discretion; decide to implement such amendments retrospectively". T's & C's apply.

For more information contact the **Financial Aid Office** on **041 504 1111**

## School Leadership awards

School Leadership Awards are granted to head prefects (Head Boy/Head Girl), or Learner Representative Council President (in cases of no Head Prefects) and who meet the criteria for a Scholar Merit Bursary, qualifies for the School Leadership award of R4200 in addition to the Scholar Merit Bursary. Documentary proof of your Grade 12 results, including a letter from your school verifying your leadership role must be submitted to the Financial Aid office on North Campus as soon as possible. The last day for submission of these documents is 31 March annually. Students who were Head Prefects (or Learner Council Presidents) but do not qualify for a Scholar Merit Bursary, nevertheless, qualifies for a School Leadership Award of R4200.

**Disclaimer:** "The university reserves the right to amend the award value and policy with regards to the bursary and may in its sole discretion; decide to implement such amendments retrospectively".  
Student merit bursaries

## Student merit bursaries

Returning undergraduate students may qualify for merit bursaries based on their final results in the previous year of study. Students must have passed all their modules at the first attempt. The rand value of which is determined on a sliding scale. These bursaries are available to South African as well as international students. Students must have also achieved a Weighted Average Academic Performance which is determined per faculty, and registered for a minimum relative course weight of at least 0.80 (or 96 credits)

Faculty of Business and Economic Science – 75%

Faculty of EBET – 70%

Faculty of Education – 75%

Faculty of Health Sciences – 70%

Faculty of Humanities – 75%

Faculty of Law – 70%

Faculty of Science – 70%

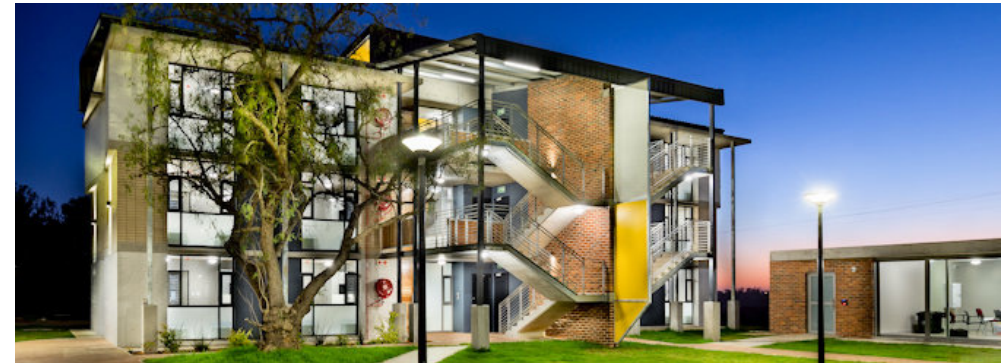
**NB:** Exempted courses are not included in the minimum relative weight or credit value for merit award purposes. The value of the bursary is not a fixed amount and is determined in accordance with the available budget. These awards are only for undergraduate studies. Students intending to register for Postgraduate Diplomas or Honours studies must apply for those bursaries on the prescribed form before 1 November of the year preceding postgraduate studies.

**Disclaimer:** "The university reserves the right to amend the award values and policy with regards to the bursary and may in its sole discretion; decide to implement such amendments retrospectively". T's & C's apply.

## Sport bursaries

Madibaz Sport offers sport bursaries of varying amounts to sport performers who have demonstrated the ability to play sport at a high level of competition. Bursary application forms can be obtained from Madibaz Sport by e-mail: [madibazsport@mandela.ac.za](mailto:madibazsport@mandela.ac.za) or by calling (041) 504 2165.

**Disclaimer:** "The university reserves the right to amend the award values and policy with regards to the bursary and may in its sole discretion; decide to implement such amendments retrospectively".



# Accommodation

## On-campus

The university provides various on-campus accommodation options. These include the residences on the university's Summerstrand and George campuses, and the Student Villages in Summerstrand, which consist of self-catering units for senior students. As accommodation is limited, early application is essential. Prospective students should note that being offered a place in an academic programme does not mean they have also been accepted into an on-campus residence. The closing date for residence applications is: **30 September 2026**. No late applications will be considered.

**For more information contact:** (041) 504 3690/1415/1416 | [resadmissions@mandela.ac.za](mailto:resadmissions@mandela.ac.za) | [www.mandela.ac.za/studenthousing](http://www.mandela.ac.za/studenthousing)

## Off-campus

Some students prefer living off-campus. Off-campus accommodation options include renting flats and houses or boarding at nearby private residences. The university offers a service to assist students in finding suitable off-campus accommodation. For more information on off-campus accommodation please contact **(041) 504 2921** or e-mail: [offcampus.accomodation@mandela.ac.za](mailto:offcampus.accomodation@mandela.ac.za)

## Applying for residence accommodation

- Apply online (<http://studenthousing.mandela.ac.za/Apply-for-admission>);
- Please note that indicating that you require accommodation does not guarantee placement in any of the university's on-campus accommodation options.
- A selection process has to take place and priority will be given to applicants who have obtained excellent academic results.
- No student will be admitted to residence until she/he has been academically admitted to a university programme, or before the appropriate fees have been paid.
- Also note that residence accommodation is limited, and preference will be given to applications received before the end of September.
- Please submit a residence accommodation form together with proof of your current residential/home or postal address via e-mail ([resadmissions@mandela.ac.za](mailto:resadmissions@mandela.ac.za)), fax (041- 504 9765) or post (Residence Accommodation, PO Box 77000, Nelson Mandela University, Gqeberha, 6031).

# International students

Nelson Mandela University's International Office (MIO) provides information and assistance to prospective and current international students. The institution is home to more than 791 international students from over 46 countries around the world. Most international students are from the African continent. Information on study programmes, fees, accommodation, and study permit requirements can be obtained from this office. Please contact them on +27 (0)41 504 2161 or e-mail: [international@mandela.ac.za](mailto:international@mandela.ac.za) or visit their website ([www.mandela.ac.za/international](http://www.mandela.ac.za/international)). **The closing date for applications by international students is 30 September 2026.**

## Study Abroad

The International Office also provides study abroad opportunities to South African second- to final year students registered at Nelson Mandela University. Opportunities are provided to students to enroll for one semester abroad at a partner university. For more information contact [international@mandela.ac.za](mailto:international@mandela.ac.za) or visit the Office for International Education.



# Students with Disabilities

Nelson Mandela University offers concessions to students with permanent, and/or temporary disabilities, and/or disorders who may not be able to reflect their true ability under standard formal assessment (test and examinations) conditions. It is the aim of the university to assist students to reach their full academic potential. This is done by providing assistance and/or concessions which ensures equitable, reasonable, and appropriate access to higher education. All of which are based on the national standards applicable to tertiary education in South Africa, whilst not prejudicing deserving students, their peers, and/or any academic programme.

For more information on accessibility and how your particular disability may be accommodated, you are advised to contact **the Universal Accessibility & Disability Services (UADS)**, on 041-504 2313, or e-mail: [disability@mandela.ac.za](mailto:disability@mandela.ac.za) as early as possible. Early enquiries during the year preceding application are encouraged, so that requests may be considered prior to admission. 2313 or E-mail: [disability@mandela.ac.za](mailto:disability@mandela.ac.za) for further information.



# Co-Curricular Record

While in university, it is important to not only achieve your goals related to your academics, but also to develop yourself in ways that will help you be a potential employee that employers want to hire. You are encouraged to develop yourself in 16 key areas believed to be attractive traits to employers, both locally and globally. Whether it be through campus leadership positions like First Year Success Buddies, BtC and Res Mentors or involvement in experiences like societies or community involvement sites, co-curricular activities provide opportunities in which you can develop these key skills. Additionally, you can receive formal recognition for the learning achieved through these out-of-the-classroom activities with the Co-Curricular Record (CCR). The CCR serves as a companion to your Academic Record and formally acknowledges your participation in approved cocurricular activities, including the learning outcomes achieved through participation. It is never too early to start developing yourself for your future career.

# The University Shop

The University Shop is a project of the Alumni Association and was established as a brand development tool. By wearing Nelson Mandela University branded items, students, staff, alumni, and friends can show their affinity and support for the University. You can visit the one-stop shop for all University branded clothing, bags, folders, and stationery in person, or shop online. **For more information contact:** 041 – 504 4371, or E-mail: [shop@mandela.ac.za](mailto:shop@mandela.ac.za), or visit their website: <https://onlineshop.mandela.ac.za/>



# Language of Teaching and Learning

While Nelson Mandela University is committed to multilingualism, the predominant language of teaching and learning at the University is English. The statutory language requirements can be met by obtaining a minimum rating of 3 (40 - 49%) or higher in English, Afrikaans or isiXhosa as a home or first additional language. Some qualifications may require a higher pass mark for language(s) than what is indicated here. Please refer to the subject requirements of the qualification you intend applying for, before completing your online application form to ensure that you meet the direct admission & subject requirements.

# Virtual Tours

Explore Nelson Mandela University from anywhere around the world with our immersive virtual tours! Whether you're planning a visit, researching our facilities, or simply curious to see what we offer, our virtual tours provide a convenient and engaging way to experience studying at our institution. Navigate through different areas, zoom in on details, and explore campus life, all at your own pace. **For more information:** <https://www.mandela.ac.za/About-us/Virtual-tours>





**George**  
Campus

## FACULTY OF SCIENCE

Qualification	Programme Overview	Delivery mode & duration of study	Minimum Admission Requirements				Career Opportunities
			AS for Maths	AS for Technical	AS for Maths	Subject Requirements	
<b>Diploma (Dip)</b>							
<b>Dip (Agricultural Management)*</b> <i>*(also offered in Gqeberha)</i>	<p>This programme consists of two years applied theoretical and one year experiential training. Students gain a sound grounding in animal and plant biology, ecology, financial management, human resource management, marketing, law and computer applications.</p> <p>During experiential training students work with experienced agri-business managers who act as role models and mentors to gain workplace experience and practical skills.</p>	Full-time 3 years (including 1 year in-service training)	330	330	345	<ul style="list-style-type: none"> <li>• Minimum NSC statutory requirements for diploma entry must be met.</li> <li>• Mathematics or Technical Mathematics – 40%, <b>or</b> Mathematical Literacy – 60%, <b>and one of the following subjects:</b></li> <li>• Physical Sciences <b>or</b> Technical Science – 40%, <b>or</b> Life Sciences – 50%, <b>or</b> Agricultural Sciences – 55%.</li> <li>• Admission is subject to departmental selection.</li> </ul>	Work opportunities in agricultural management are to be found with co-operatives, chemical companies, on farms (as farm managers), in the civil service and with all companies that provide agricultural products or services.
<b>Dip (Forestry)</b>	<p>This programme consists of two years applied theoretical and one year experiential training. Students gain a sound grounding in all aspects pertaining to sustainable forest management, such as silviculture, forest management, forest engineering, cost &amp; management accounting, economics and environmental management.</p> <p>This foundation enables students to work in any field related to the global forestry industry. During experiential training, students work at an appropriate site in the industry with experienced foresters and/or forestry contractors acting as role models and mentors.</p> <p>Students gain invaluable technical experience, expanded work perspective and ingrained work ethics.</p>	Full-time 3 years (including 1 year in-service training)	330	330	345	<ul style="list-style-type: none"> <li>• Minimum NSC statutory requirements for diploma entry must be met.</li> <li>• Mathematics or Technical Mathematics – 40%, <b>or</b> Mathematical Literacy – 60%.</li> <li>• Physical Sciences <b>or</b> Technical Science – 40%, <b>or</b> Life Sciences – 50%, <b>or</b> Agricultural Sciences – 55%.</li> <li>• Admission is subject to departmental selection.</li> </ul>	Career opportunities exist at private and public forestry companies, pulpwood and mining timber growers, municipalities and other local authorities

Qualification	Programme Overview	Delivery mode & duration of study	Minimum Admission Requirements				Career Opportunities
			AS for Maths	AS for Technical Maths	AS for Maths Literacy	Subject Requirements	
<b>Dip (Nature Conservation)</b>	<p>This programme consists of two years theoretical and one year experiential training. During theoretical training students gain a sound grounding in animal and plant biology, ecology and resource management of South African ecosystems.</p> <p>The increasing need for community programmes such as community conservation and environmental education are also covered. Weekly practical excursions supplement the theory. During experiential training students work with experienced conservators who act as role models and mentors. In this manner the student gains an expanded work perspective and an ingrained work ethic.</p>	Full-time 3 years (including 1 year in-service training)	330	330	345	<ul style="list-style-type: none"> <li>Minimum NSC statutory requirements for diploma entry must be met.</li> <li>Mathematics or Technical Mathematics – 40%, <b>or</b> Mathematical Literacy – 60%, <b>and one of the following subjects:</b></li> <li>Physical Sciences or Technical Science – 40%, <b>or</b> Life Sciences – 50%.</li> <li>Admission is subject to departmental selection.</li> </ul>	Nature conservators and game ranch managers find career opportunities in extension work, conservation management on nature and game reserves and estates, parks, boards, provincial nature conservation departments, private nature reserves and regional services and councils, municipalities and forestry companies.
<b>Dip (Wood Technology)</b>	<p>This programme consists of two years theoretical and one year experiential training offered on campus and at an approved wood processing facility. The programme covers the whole spectrum of subjects related to the working industrial environment. The subjects are packed with new and relevant information as the industry grows. Class time is also interrupted with visits to primary and secondary wood processing plants to expose students to working environments and new technology.</p>	Full-time 3 years (including 1 year in-service training)	330	330	345	<ul style="list-style-type: none"> <li>Minimum NSC statutory requirements for diploma entry must be met.</li> <li>Mathematics or Technical Mathematics – 40%, <b>or</b> Mathematical Literacy – 60%, <b>and</b></li> <li>Physical Sciences <b>or</b> Technical Science – 40%.</li> <li>Admission is subject to departmental selection.</li> </ul>	Main employers are the softwood and hardwood sawmill companies, mining timber mills, fibre and particle board mills, timber preservation plants, rooftruss manufacturers, secondary timber product manufacturers, the furniture industry, SABS, CSIR and various machine manufacturers. Wood technologists' work relates to production, management, training, marketing and research.

1. Applicant Score (AS) for Mathematics: Overall score calculated for applicants who have taken Mathematics;
2. Applicant Score (AS) for Technical Mathematics: Overall score calculated for applicants who have taken Technical Mathematics;
3. Applicant Score (AS) for Mathematical Literacy: Overall score calculated for applicants who have taken Mathematical Literacy.

Qualification	Programme Overview	Delivery mode & duration of study	Minimum Admission Requirements				Career Opportunities
			AS for Maths	AS for Technical Maths	AS for Maths Literacy	Subject Requirements	
<b>Advanced Diploma (Adv Dip)</b>							
<b>Advanced Diploma (Agricultural Management)*</b> <i>*(also offered in Gqeberha).</i>	The programme equips students with in-depth knowledge and skills in the fields of animal production, plant production, financial management, leadership development and strategic management.	Full-time 1 year	–	–	–	A relevant 360-credit Diploma in Agricultural Management or an equivalent qualification. Although not a requirement, it is regarded as desirable that an applicant has completed at least two years' applicable practical service after having graduated. Candidates will only be considered if their average pass mark for the diploma is at least 60%.	Work opportunities in agricultural management are to be found with cooperatives, chemical companies, on farms (as farm managers), in the civil service and with all companies that provide agricultural products or services.
<b>Advanced Diploma (Wood Technology)</b>	This programme equips diplomates with skills and knowledge in the fields of timber processing, seasoning and structures, panel board production, human resource management and environmental management, applied biometry and production engineering (industrial).	Full-time 1 year Part-time 2 years	–	–	–	A relevant 360-credit Diploma in Wood Technology or an equivalent qualification. Although not a requirement, it is regarded as desirable that an applicant has completed at least two years' applicable practical service after having graduated. Candidates will only be considered if their average pass mark for the diploma is at least 60% and has been completed in one year.	Main employers are the softwood and hardwood sawmill companies, mining timber mills, fibre and particle board mills, timber preservation plants, roof-truss manufacturers, secondary timber product manufacturers, the furniture industry, SABS, CSIR and various machine manufacturers. Wood technologists' work relates to production, management, training, marketing and research.
<b>Advanced Diploma (Forestry)</b>	This programme provides students with an in-depth knowledge of various aspects in the field of Forestry, including silviculture, management, engineering, biometry, fire ecology, human resource management, woodland management, community forestry, business management and environmental management.	Full-time 1 year Part-time 2 years	–	–	–	A relevant 360-credit Diploma in Forestry or an equivalent qualification. Although not a requirement, it is regarded as desirable that an applicant has completed at least two years' applicable practical service after having graduated. Candidates will only be considered if their average pass mark for the diploma is at least 60% and has been completed in one academic year.	Career opportunities exist at private and public forestry companies, pulpwood and mining timber growers, municipalities and other local authorities.

Qualification	Programme Overview	Delivery mode & duration of study	Minimum Admission Requirements				Career Opportunities
			AS for Maths	AS for Technical Maths	AS for Maths Literacy	Subject Requirements	
<b>Advanced Diploma (Forestry)</b> <i>(continued)</i>						<p>Prospective students who have not completed modules in Forest Management, Forest Engineering, Silviculture, Forest Economics and Utilisation on a third-year level of study, with a specific focus on the commercial plantation forestry sector, who apply for admission to the full-time Advanced Diploma in Forestry Programme, will be required first to do the third (final) year of the Diploma in Forestry offered by Nelson Mandela University and pass with a 60% average.</p> <p>Failing to maintain a 60% average will mean that students will only be considered for the Advanced Diploma in Forestry Programme after completing at least two years of service as a forest manager on a commercial plantation.</p> <p>Prospective students will not be allowed to register for any Advanced Diploma modules during this year and all 3rd-year subjects must be completed successfully before a student can commence to the Advanced Diploma Programme. These students will be registered as occasional students and will not be awarded the Nelson Mandela University Diploma in Forestry</p>	
<b>Advanced Diploma (Nature Conservation)</b>	This course aims to prepare students to be conservation managers and field ecologists with advanced knowledge and skills in conservation biology, wildlife ecology, plant ecology, resource management and community engagement.	Full-time 1 year	–	–	–	<p>A relevant 360-credit Diploma in Nature Conservation or an equivalent qualification (e.g., Diploma in Game Ranch Management or Diploma in Wildlife Management). Candidates with a cognate qualification in the fields of ecology and natural resource management (e.g., BSc with majors Botany, Zoology or Ecology) can horizontally apply for this advanced diploma. The minimum entry requirement for the Advanced Diploma is a 60% average for the Diploma, or 60% average for majors in the case of cognate qualifications like a BSc.</p>	Nature conservators find career opportunities in extension work, conservation management on nature and game reserves and estates, parks, boards, provincial nature conservation departments, private nature reserves and regional services and councils, municipalities and forestry companies.

1. Applicant Score (AS) for Mathematics: Overall score calculated for applicants who have taken Mathematics;
2. Applicant Score (AS) for Technical Mathematics: Overall score calculated for applicants who have taken Technical Mathematics;
3. Applicant Score (AS) for Mathematical Literacy: Overall score calculated for applicants who have taken Mathematical Literacy.

## FACULTY OF BUSINESS & ECONOMIC SCIENCES

Qualification	Programme Overview	Delivery mode & duration of study	Minimum Admission Requirements				Career Opportunities
			AS for Maths	AS for Technical Maths	AS for Maths Literacy	Subject Requirements	
<b>Higher Certificate (HCert)</b>							
<b>HCert (Business Studies) *</b> <i>*(also offered in Gqeberha)</i>	<p>The purpose of this qualification is to equip students with the necessary knowledge and skills related to the business environment to make them more employable and to also widen access to selected diploma qualification(s).</p> <p>Students who successfully complete this Higher Certificate qualification and comply with the set admission requirements may proceed to one of the following diplomas in the field of: Marketing, Management or Tourism management.</p>	Full-time 1 year	290	290	305	<ul style="list-style-type: none"> <li>Minimum NSC statutory requirements for higher certificate entry must be met.</li> <li>Mathematics or Technical Mathematics – 30%, <b>or</b> Mathematical Literacy – 50%.</li> </ul>	Marketing intern, marketing officer, office manager or entrepreneur.
<b>Diploma (Dip)</b>							
<b>Dip (Management)*</b> <i>*(also offered in Gqeberha)</i>	<p>This programme prepares students for management positions in the retail and manufacturing sectors. This programme is offered on a modular basis and has a strong retail and financial management focus, which places students who complete this diploma in an excellent position to manage their own businesses.</p>	Full-time 3 years	330	330	345	<ul style="list-style-type: none"> <li>Minimum NSC statutory requirements for diploma entry must be met.</li> <li>Mathematics or Technical Mathematics – 40%, <b>or</b> Mathematical Literacy – 60%.</li> </ul> <p><b>Alternatively:</b> Higher Certificate in Business Studies or an equivalent qualification. Students who graduated with a Higher Certificate in Business Studies (or an equivalent qualification) may be considered for admission to the Diploma in Management provided they completed the qualification within the minimum time frame of one year of full-time study; and exceeded the minimum pass requirement of 50% for all modules.</p>	Job opportunities exist in the fields of retail store management, retail buying, financial management, business administration and production management

Qualification	Programme Overview	Delivery mode & duration of study	Minimum Admission Requirements				Career Opportunities
			AS for Maths	AS for Technical Maths	AS for Maths Literacy	Subject Requirements	
<b>Dip (Management) Extended Curriculum*</b> <i>*(also offered in Gqeberha).</i>	<p>The extended curriculum programme for Dip (Management) studies provides alternative university access to students who have the potential to succeed, but do not meet the minimum admission requirements for the mainstream programme.</p> <p>The purpose of the programme is to integrate additional academic support and skills development with mainstream courses in order to prepare the student for successful completion of the relevant Diploma.</p>	Full-time 4 years	310	310	325	<ul style="list-style-type: none"> <li>Minimum NSC statutory requirements for diploma entry must be met.</li> <li>Mathematics or Technical Mathematics – 35%, <b>or</b> Mathematical Literacy – 55%.</li> </ul> <p><b>Alternatively:</b> Higher Certificate in Business Studies or an equivalent qualification. Students who graduated with a Higher Certificate in Business Studies (or an equivalent qualification) may be considered for admission to the Diploma in Management (Extended Curriculum) provided they completed the qualification within the minimum time frame of one year of full-time study; and exceeded the minimum pass requirement of 50% for all modules.</p>	The same as for three-year Diploma in a chosen field.
<b>Dip (Marketing)*</b> <i>*(also offered in Gqeberha).</i>	<p>This diploma is acknowledged as a solid entrance-level qualification to the exciting global marketing arena. What sets this popular programme aside is its dynamic career dedicated slant. Students are exposed to relevant, exciting and broad-based career training options. The skills and knowledge obtained are in tune with the needs of both commerce and industry.</p>	Full-time 3 years	330	330	345	<ul style="list-style-type: none"> <li>Minimum NSC statutory requirements for diploma entry must be met.</li> <li>Mathematics or Technical Mathematics – 40%, <b>or</b> Mathematical Literacy – 60%.</li> </ul> <p><b>Alternatively:</b> Higher Certificate in Business Studies or an equivalent qualification. Students who graduated with a Higher Certificate in Business Studies (or an equivalent qualification) may be considered for admission to the Diploma in Marketing provided they completed the qualification within the minimum time frame of one year of full-time study; and exceeded the minimum pass requirement of 50% for all modules.</p>	Advertising, personal selling and sales management, product and brand management, customer relationship management, merchandising, wholesaling and retail marketing, media management, direct response marketing, marketing communications, public relations / promotions, marketing research, marketing administration and planning, marketing forecasting and analysis, international / export marketing, small business marketing.

1. Applicant Score (AS) for Mathematics: Overall score calculated for applicants who have taken Mathematics;
2. Applicant Score (AS) for Technical Mathematics: Overall score calculated for applicants who have taken Technical Mathematics;
3. Applicant Score (AS) for Mathematical Literacy: Overall score calculated for applicants who have taken Mathematical Literacy.

Qualification	Programme Overview	Delivery mode & duration of study	Minimum Admission Requirements				Career Opportunities
			AS for Maths	AS for Technical Maths	AS for Maths Literacy	Subject Requirements	
<b>Dip (Marketing) Extended Curriculum*</b> <i>*(also offered in Gqeberha).</i>	<p>The extended curriculum programme for Dip (Marketing) studies provides alternative university access to students who have the potential to succeed, but do not meet the minimum admission requirements for the mainstream programme.</p> <p>The purpose of the programme is to integrate additional academic support and skills development with mainstream courses in order to prepare the student for successful completion of the relevant Diploma.</p>	Full-time 4 years	310	310	325	<ul style="list-style-type: none"> <li>Minimum NSC statutory requirements for diploma entry must be met.</li> <li>Mathematics or Technical Mathematics – 35%, <b>or</b> Mathematical Literacy – 55%.</li> </ul> <p><b>Alternatively:</b> Higher Certificate in Business Studies or an equivalent qualification. Students who graduated with a Higher Certificate in Business Studies (or an equivalent qualification) may be considered for admission to the Diploma in Marketing (Extended Curriculum) provided they completed the qualification within the minimum time frame of one year of full-time study; and exceeded the minimum pass requirement of 50% for all modules.</p>	The same as for three-year Diploma in a chosen field.
<b>Dip (Tourism Management) *</b> <i>*(also offered in Gqeberha).</i>	<p>This programme prepares students for an exciting career in the tourism industry. The programme is intense and covers a wide spectrum of both skills-based training and knowledge that is critical for the tourism industry.</p> <p>This programme is highly sought after as it caters for students seeking employment opportunities in various sectors of the tourism industry.</p>	Full-time 3 years	330	330	345	<ul style="list-style-type: none"> <li>Minimum NSC statutory requirements for diploma entry must be met.</li> <li>Mathematics or Technical Mathematics – 40%, <b>or</b> Mathematical Literacy – 60%.</li> </ul> <p><b>Alternatively:</b> Higher Certificate in Business Studies or an equivalent qualification. Students who graduated with a Higher Certificate in Business Studies (or an equivalent qualification) may be considered for admission to the Diploma in Tourism Management provided they completed the qualification within the minimum time frame of one year of full-time study; and exceeded the minimum pass requirement of 50% for all modules.</p>	Employment opportunities in various sectors: transport (airlines, sea travel companies, car hire), travel services (travel agencies, tour operators, information bureaus), hospitality services (hotels, guesthouses) and attractions (national parks, theme parks, conference centres).

Qualification	Programme Overview	Delivery mode & duration of study	Minimum Admission Requirements				Career Opportunities
			AS for Maths	AS for Technical Maths	AS for Maths Literacy	Subject Requirements	
<b>Dip (Tourism Management)</b> Extended Curriculum*  <i>*(also offered in Gqeberha).</i>	<p>The extended curriculum programme for Diploma studies provides alternative university access to students who have the potential to succeed, but do not meet the minimum admission requirements for the mainstream programme.</p> <p>The purpose of the programme is to integrate additional academic support and skills development with mainstream courses to prepare the student for successful completion of the relevant Diploma.</p>	Full-time 4 years	310	310	325	<ul style="list-style-type: none"> <li>Minimum NSC statutory requirements for diploma entry must be met.</li> <li>Mathematics or Technical Mathematics – 35%, <b>or</b> Mathematical Literacy – 55%.</li> </ul> <p><b>Alternatively:</b> Higher Certificate in Business Studies or an equivalent qualification. Students who graduated with a Higher Certificate in Business Studies (or an equivalent qualification) may be considered for admission to the Diploma in Tourism Management (Extended Curriculum) provided they completed the qualification within the minimum time frame of one year of full-time study; and exceeded the minimum pass requirement of 50% for all modules.</p>	The same as for three-year Diploma in a chosen field.
<b>Advanced Diploma (Adv Dip)</b>							
<b>Advanced Diploma (Business Studies) *</b>  <i>*(also offered in Gqeberha).</i>	<p>Advanced Diploma in Business Studies, with specialisation streams in:</p> <ul style="list-style-type: none"> <li>Management Practice; or</li> <li>Marketing Management; or</li> <li>Tourism Management.</li> </ul> <p>This qualification aims to prepare students both academically and professionally in the selected fields to manage various businesses successfully through appropriate planning, organising, directing and controlling the functions and processes of such establishments.</p>	Full-time 1 year	–	–	–	<ul style="list-style-type: none"> <li>A relevant 360-credit Diploma in the chosen field of specialisation listed, or an equivalent qualification.</li> </ul>	<p><b>Marketing careers:</b> Marketing related positions such as marketing manager, marketing strategist, service marketer.</p> <p><b>Management careers:</b> Job opportunities exist across all management levels and industry sectors. Specific opportunities exist in the fields of retail store management, retail buying, financial management, business administration and production management.</p>

1. Applicant Score (AS) for Mathematics: Overall score calculated for applicants who have taken Mathematics;
2. Applicant Score (AS) for Technical Mathematics: Overall score calculated for applicants who have taken Technical Mathematics;
3. Applicant Score (AS) for Mathematical Literacy: Overall score calculated for applicants who have taken Mathematical Literacy.

Qualification	Programme Overview	Delivery mode & duration of study	Minimum Admission Requirements				Career Opportunities
			AS for Maths	AS for Technical Maths	AS for Maths Literacy	Subject Requirements	
<b>Advanced Diploma (Business Studies) *</b> <i>(continued)</i>  <i>*(also offered in Gqeberha).</i>	They will be able to collect, analyse and critically review data for effective business and financial decision-making and communicate such decisions and relevant information coherently and reliably. Successful candidates will be able to work independently and as members of a team.						<b>Tourism careers:</b> The qualification will prepare individuals for an array of positions within the tourism industry and its various sectors, such as, travel retail sector, accommodation sector, transport sector, tourism planning and development, and local economic development.
<b>Bachelor of Commerce (BCom)</b>							
<b>BCom: General*</b>  <i>*(also offered in Gqeberha).</i>	This programme opens a wide variety of career opportunities in the business world and the financial services industry.  The following general BCom qualifications are offered: <ul style="list-style-type: none"> <li>• Bachelor of Commerce (General: Economics and Business Management); <b>or</b></li> <li>• Bachelor of Commerce (General: Economics and Accounting or General Accounting); <b>or</b></li> <li>• Bachelor of Commerce (General: Business Management and Accounting or General Accounting).</li> </ul>	Full-time 3 years	390	–	–	<ul style="list-style-type: none"> <li>• Minimum NSC statutory requirements for degree entry must be met.</li> <li>• Mathematics – 50%.</li> </ul>	Banker, business manager, financier, economist, training manager, teacher, financial manager, accountant, insurance broker, management consultant, small business consultant or an entrepreneur.
<b>BCom: General</b> Extended Curriculum	The extended curriculum programme for BCom studies provides alternative university access to students who have the potential to succeed, but do not meet the minimum admission requirements for the mainstream programme.	Full-time 4 years	370	–	–	<ul style="list-style-type: none"> <li>• Minimum NSC statutory requirements for degree entry must be met.</li> <li>• Mathematics – 45%.</li> </ul>	The same as for the three-year BCom degree in a chosen field.

Qualification	Programme Overview	Delivery mode & duration of study	Minimum Admission Requirements				Career Opportunities
			AS for Maths	AS for Technical Maths	AS for Maths Literacy	Subject Requirements	
<b>BCom: General</b> Extended Curriculum (continued)	<p>The purpose of the programme is to integrate additional academic support and skills development with mainstream courses to prepare the student for successful completion of the BCom degree.</p> <p>The following BCom extended curriculum qualifications are offered:</p> <ul style="list-style-type: none"> <li>• Business Management;</li> <li>• Economics.</li> </ul>						
<b>BCom (Accounting)*</b> <i>*(also offered in Gqeberha).</i>	<p>This programme is prescribed for candidates who intend to qualify as a chartered accountant (CA).</p> <p>The programme focuses on financial accounting, auditing, taxation, management accounting and finance. Graduates of this programme need to complete a Postgraduate Diploma in Accounting (only offered in Gqeberha (formerly, Port Elizabeth), followed by a period of three years' practical training and the completion of two professional qualifying examinations to register as a Chartered Accountant (SA).</p> <p>The university is well-known for the excellent results which its graduates achieve in the professional qualifying examinations, and for the high employment rate of its graduates.</p>	Full-time 3 years	410	–	–	<ul style="list-style-type: none"> <li>• Minimum NSC statutory requirements for degree entry must be met.</li> <li>• Mathematics – 60%.</li> </ul>	Chartered accountant, financial manager, chief financial officer, financial accountant, registered auditor, cost and management accountant, tax consultant, internal auditor, and/or banker.

1. Applicant Score (AS) for Mathematics: Overall score calculated for applicants who have taken Mathematics;
2. Applicant Score (AS) for Technical Mathematics: Overall score calculated for applicants who have taken Technical Mathematics;
3. Applicant Score (AS) for Mathematical Literacy: Overall score calculated for applicants who have taken Mathematical Literacy.

Qualification	Programme Overview	Delivery mode & duration of study	Minimum Admission Requirements				Career Opportunities
			AS for Maths	AS for Technical Maths	AS for Maths Literacy	Subject Requirements	
<b>BCom (General Accounting)*</b> <i>*(also offered in Gqeberha).</i>	<p>This programme is offered for students wishing to major in general accounting, auditing, taxation and management accounting.</p> <p>The accounting programme is intended for students who do not wish to qualify as Chartered Accountants, but who may wish to join the other professional institutes such as the Institute of Internal Auditors (IIA), the Institute of Chartered Secretaries and Administrators (ICSA), the Association of Chartered Certified Accountants (ACCA), the South African Institute of Tax Practitioners and the South African Institute of Professional Accountants (SAIPA) and yet wish to include accountancy subjects as majors in their degree.</p>	Full-time 3 years	390	–	–	<ul style="list-style-type: none"> <li>• Minimum NSC statutory requirements for degree entry must be met.</li> <li>• Mathematics – 50%.</li> </ul>	<p>This programme is intended for those planning careers in the field of accounting, but who do not intend to qualify as a chartered accountant. Possible career opportunities include: financial accountant, financial manager, management accountant, bookkeeper, tax accountant and practitioner.</p>
<b>BCom (General Accounting) Extended Curriculum*</b> <i>*(also offered in Gqeberha).</i>	<p>The extended curriculum programme for BCom studies provides alternative university access to students who have the potential to succeed, but do not meet the minimum admission requirements for the mainstream programme.</p> <p>The purpose of the programme is to integrate additional academic support and skills development with mainstream courses to prepare the student for successful completion of the BCom degree.</p>	Full-time 4 years	370	–	–	<ul style="list-style-type: none"> <li>• Minimum NSC statutory requirements for degree entry must be met.</li> <li>• Mathematics – 45%.</li> </ul>	<p>The same as for the three-year BCom degree in a chosen field.</p>

Qualification	Programme Overview	Delivery mode & duration of study	Minimum Admission Requirements				Career Opportunities
			AS for Maths	AS for Technical Maths	AS for Maths Literacy	Subject Requirements	
<b>BCom: General (Business Management and Industrial &amp; Organisational Psychology)</b>	This programme is designed for candidates who wish to fast-track a career in business by providing them with the theoretical insights, competence and practical skills required to succeed in business. The programme allows access to the realities of starting and/or managing a business by exploring various facets of entrepreneurship and management, from business strategy to finance, from procurement to marketing, from industrial and organisational psychology and human resources management to economics, while including essential aspects of statistics, law, and ethical leadership.	Full-time 3 years	390	–	–	<ul style="list-style-type: none"> <li>Minimum NSC statutory requirements for degree entry must be met.</li> <li>Mathematics – 50%.</li> </ul>	Business manager, economist, human resources manager, marketing manager, training manager, teacher, statistician, financial manager, accountant, insurance broker, mathematician, management consultant, auditor, entrepreneur, labour relations manager or an industrial psychologist.

## FACULTY OF ENGINEERING, THE BUILT ENVIRONMENT & TECHNOLOGY

### Higher Certificate (HCert)

<b>HCert: IT (User Support Services)*</b> <i>*(also offered in Gqeberha).</i>	<p>The purpose of the qualification is to produce graduates who are productive, competent, able to work independently, and who can manage time effectively in entry-level technical user support positions that span a wide range of computing environments requiring support personnel.</p> <p><b>Please note:</b> Candidates who qualify with the Higher Certificate in IT in User Support Services may apply for admission to the Diploma: IT (Support Services) currently only offered in Gqeberha (formerly, Port Elizabeth), if they have obtained an average of 60% for all modules at the exit level.</p>	Full-time 1 year	290	290	305	<ul style="list-style-type: none"> <li>Minimum NSC statutory requirements for higher certificate entry must be met.</li> <li>Mathematics or Technical Mathematics – 35%, <b>or</b> Mathematical Literacy – 55%.</li> </ul>	Entry-level IT support technician.
--	---	------------------	-----	-----	-----	--	------------------------------------

1. Applicant Score (AS) for Mathematics: Overall score calculated for applicants who have taken Mathematics;
2. Applicant Score (AS) for Technical Mathematics: Overall score calculated for applicants who have taken Technical Mathematics;
3. Applicant Score (AS) for Mathematical Literacy: Overall score calculated for applicants who have taken Mathematical Literacy.

# Contact Details

	Gqeberha Campuses	George Campus
<b>General Enquiries</b>	041 504 1111	044 801 5111/5999
<b>Student Access &amp; Enrolment Office</b>	041 504 1111/4993/4811/1504/1018	044 801 5194
<b>Library and Information Services</b>	041 504 2294/2298/3410/3851/1269	044 801 5151/5152
<b>Financial Aid</b>	041 504 1111/9971/9926/1242/3096	044 801 6136
<b>Emthonjeni Student Wellness</b>	041 504 2511/ 3222/ 3854 /1106	044 801 5047
<b>Student Housing</b>	041 1415/1416/3690 (On-Campus) 041 504 2921 (Off-campus)	044 801 5034/5136/5067 (On-campus) 044 801 5139 (Off-campus)
<b>Student societies and clubs</b>	041 504 3229/3351/3894/1235	044 801 5029
<b>Madibaz Sport</b>	041 504 2165	044 801 5037
<b>Student Health Services</b>	041 504 2174/1149/3762/1373	044 801 5062
<b>Universal Accessibility &amp; Disability Services (UADS)</b>	041 504 2313	044 801 5041
<b>Mandela International Office</b>	041 504 2161	

## Address of the University

PO Box 77000  
Nelson Mandela University  
GQEBERHA  
6031

**E** [info@mandela.ac.za](mailto:info@mandela.ac.za)

**W** [mandela.ac.za](http://mandela.ac.za)



## Address of the George Campus

Nelson Mandela University  
George Campus  
Private Bag X 6531  
GEORGE  
6530

**E** [george-info@mandela.ac.za](mailto:george-info@mandela.ac.za)

**W** [georgecampus.mandela.ac.za](http://georgecampus.mandela.ac.za)

# Our Vision

To be a dynamic African university, recognised for its leadership in generating cutting-edge knowledge for a sustainable future.

# Our Mission

To offer a diverse range of life-changing educational experiences for a better world.

**To achieve our vision and mission, we will ensure that:**

- Our values inform and define our institutional ethos and distinctive educational purpose and philosophy.
- We are committed to promoting equity of access and opportunities so as to give students the best chance of success in their pursuit of lifelong learning and diverse educational goals.
  - We provide a vibrant, stimulating and richly diverse environment that enables staff and students to reach their full potential.
  - We develop graduates and diplomates to be responsible global citizens capable of critical reasoning, innovation, and adaptability.
  - We create and sustain an environment that encourages and supports a vibrant research, scholarship and innovation culture.
- We engage in mutually beneficial partnerships locally, nationally and globally to enhance social, economic, and ecological sustainability.

# Our Values



**Disclaimer:** All reasonable steps have been taken to ensure that the information contained in this guide was correct at the date of publication. All information listed is subject to change and may be updated without prior notification. Nelson Mandela University reserves the right to make changes to the programme details, rules, admission requirements, duration and delivery of courses as published in this guide. Prospective applicants are advised to consult the Student Access & Enrolment Office, the University website or relevant faculties prior to applying.

