

NELSON MANDELA UNIVERSITY



Q2
2020

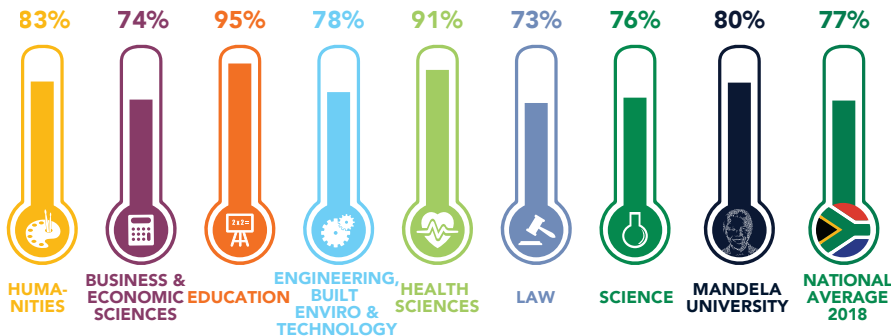
STUDENT SUCCESS AT A GLANCE

Produced by the Office for Institutional Strategy

OUR DEFINITION OF STUDENT SUCCESS

“ Student success is being self-aware, understanding one’s own **strengths and weaknesses**, mindfully setting & **achieving** one’s personal goals with **persistence and commitment**, and taking **co-responsibility** with staff and support structures to progress academically, and to **graduate as holistically developed, responsible citizens.** ”

SUCCESS RATES OF ALL COURSEWORK MODULES BY FACULTY 2019



SUCCESS RATES OF NSFAS LOAN-FUNDED STUDENTS 2019

12 926

STUDENTS

76.5%

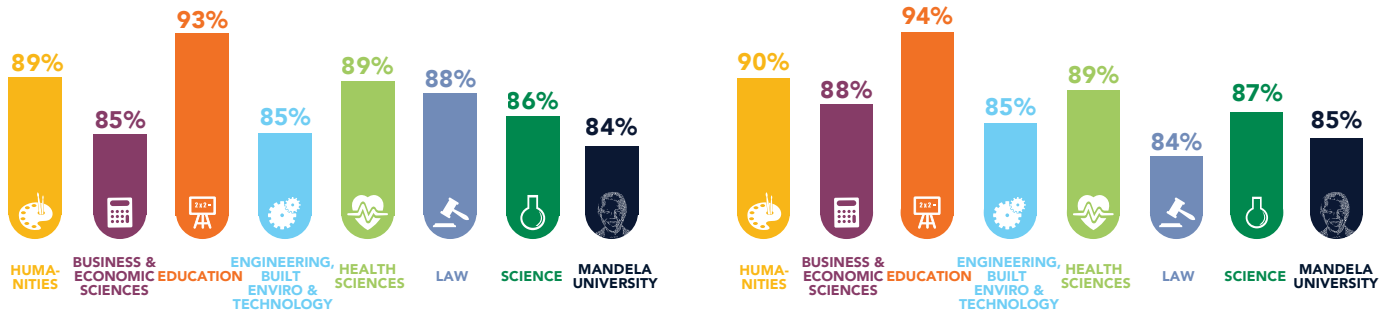
SUCCESS RATE

compared to the average of 80% for all Mandela University students

RETENTION OF FIRST YEAR STUDENTS BY FACULTY

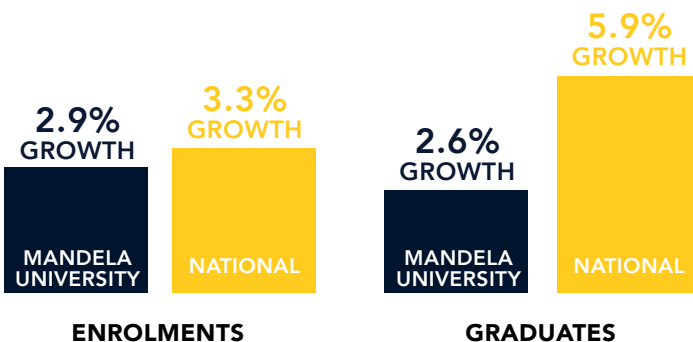
2018 FIRST TIME ENTERING % RETURNING IN 2019

2019 FIRST TIME ENTERING % RETURNING IN 2020



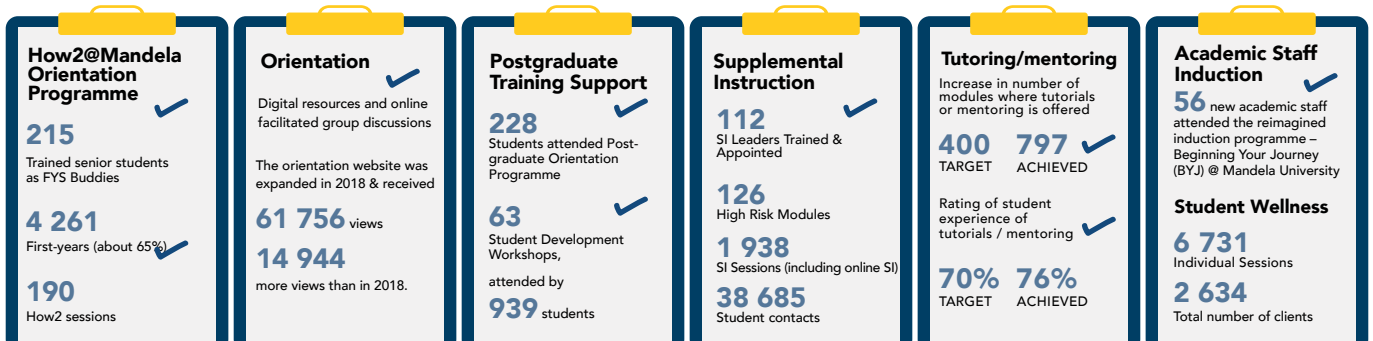
AVERAGE ANNUAL GROWTH RATE FOR ENROLMENTS COMPARED TO GRADUATES 2019

GROWTH RATES FOR 2015 TO 2019 COMPARED TO THE NATIONAL AVERAGE



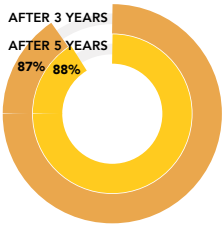
Due to a considerable increase in enrolments from 2018 to 2019 (4.7%), the enrolments grew at a higher rate (2.9%) than graduates (2.6%).

STUDENT SUPPORT INTERVENTIONS IN 2019

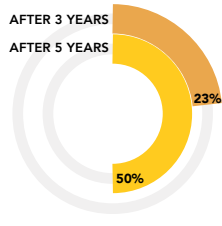


THROUGHPUT RATES OF ALL UNDERGRADUATE QUALIFICATIONS 2019 (2013 COHORT)

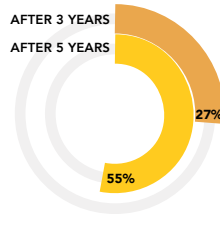
UNDERGRADUATE DIPLOMAS 1YR & 2YR(%)



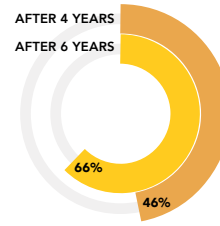
NATIONAL DIPLOMAS (%)



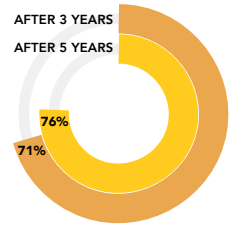
B-DEGREE 3 YR (%)



B DEGREE 4YR (%)



BTECH (%)



AFTER 3 YEARS 66%
AFTER 5 YEARS 73%

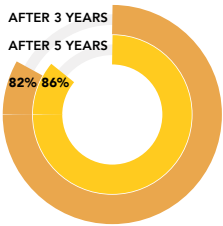
AFTER 3 YEARS 23%
AFTER 5 YEARS 50%

AFTER 3 YEARS 30%
AFTER 5 YEARS 56%

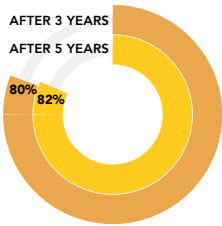
AFTER 4 YEARS 46%
AFTER 6 YEARS 66%

AFTER 3 YEARS 66%
AFTER 5 YEARS 73%

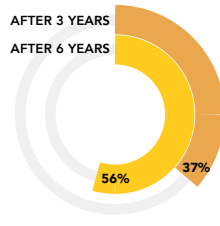
POSTGRADUATE DIPLOMAS CERTIFICATE (%)



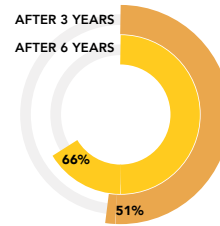
HONOURS (%)



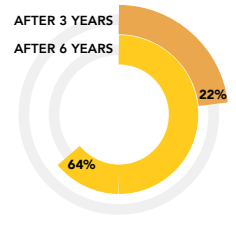
MASTER'S COURSEWORK (%)



MASTERS RESEARCH (%)



PHD (%)



AFTER 3 YEARS 79%
AFTER 5 YEARS 81%

AFTER 3 YEARS 73%
AFTER 5 YEARS 78%

AFTER 3 YEARS 43%
AFTER 6 YEARS 61%

AFTER 3 YEARS 36%
AFTER 6 YEARS 57%

AFTER 3 YEARS 18%
AFTER 6 YEARS 54%

GRADUATE OUTPUTS PER FACULTY 2018 - 2019

2018

UNDERGRADUATE



POSTGRADUATE



2019

UNDERGRADUATE



POSTGRADUATE



GEOGRAPHICAL ORIGIN OF MASTER'S AND DOCTORAL (M&D) GRADUATES 2019

0.2% INTERNATIONAL

10.7% AFRICAN

89.1% SOUTH AFRICAN



MASTER'S GRADUATES

7.2% INTERNATIONAL

34% AFRICAN

58.8% SOUTH AFRICAN



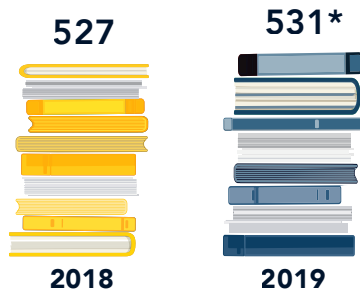
DOCTORAL GRADUATES

MASTER'S AND DOCTORAL (M&D) WEIGHTED RESEARCH OUTPUT UNITS (WROU) 2018 - 2019

	HUMANITIES	BUSINESS & ECONOMIC SCIENCES	EDUCATION	ENGINEERING, BUILT ENVIRO & TECHNOLOGY	HEALTH SCIENCES	LAW	SCIENCE	MANDELA UNIVERSITY
2018								
MASTER'S WROU 2018	69	74	6	26	35	10	75	296
% INCREASE 2015-2018	26%	-14%	-60%	10%	17%	83%	48%	11%
DOCTORAL WROU 2018	36	90	27	30	33	0	90	306
% INCREASE 2015-2018	20%	25%	29%	0%	120%	-100%	30%	28%
2019*								
MASTER'S WROU 2019	32	64	6	41	52	9	57	261
% INCREASE 2015-2019	1%	-6%	-20%	-4%	15%	12%	3%	-1%
DOCTORAL WROU 2019	24	51	18	57	27	3	111	291
% INCREASE 2015-2019	-5%	-8%	-4%	17%	16%	0%	13%	3%

*The research output data for 2019 indicated above is preliminary and still needs to be externally audited.

NUMBER OF RESEARCH ARTICLES PUBLISHED 2018 - 2019

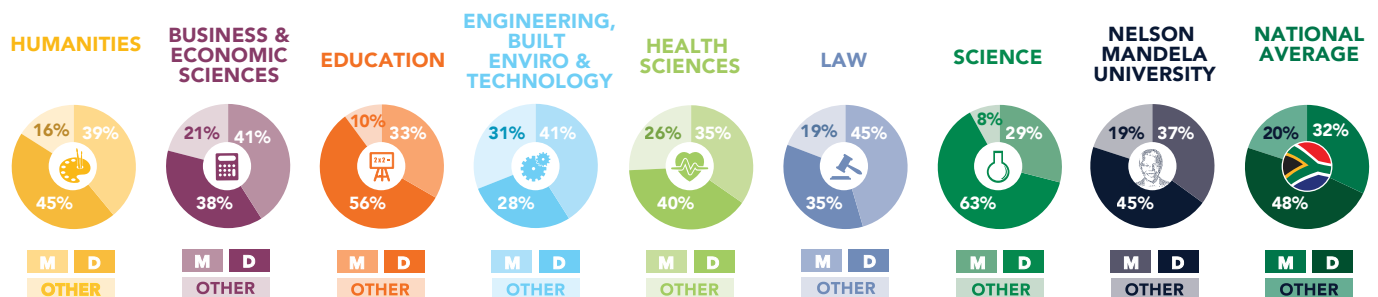


NOTES:

*The research output data for 2019 indicated on the left is preliminary and still needs to be externally audited.

**It is the norm to report annually on weighted research output units (WROUs), including fundable publication units (i.e. research articles, conference proceedings, books and chapters in books). Indicated on the left, is a preliminary indication of actual research articles produced in 2019 compared to 2018.

% STAFF WITH MASTER'S AND DOCTORAL (M&D) QUALIFICATIONS BY FACULTY 2019



ACADEMIC FULL-TIME EQUIVALENT (FTE) STUDENT: STAFF RATIO 2018 COMPARED TO 2019

BY FACULTY COMPARED TO NATIONAL AVERAGE

