

NELSON MANDELA

UNIVERSITY



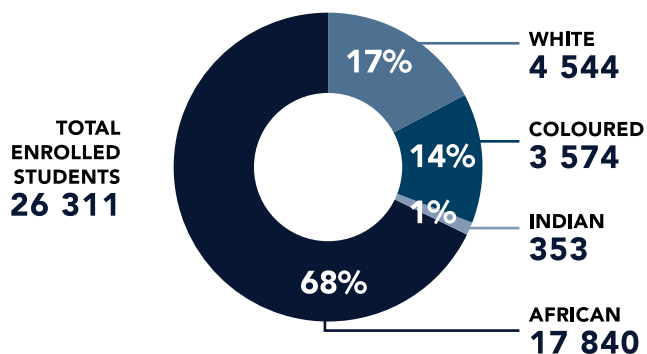
Q1
2018

Student access and enrolments at a glance: 2018

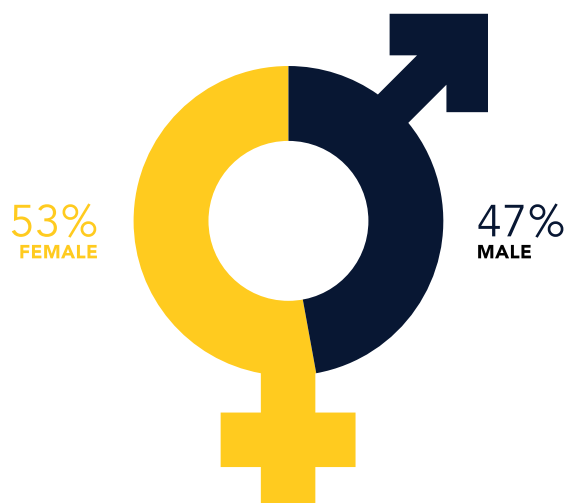
Produced by the Office for Institutional Planning

STUDENT HEADCOUNT

AS AT 15 MARCH 2018

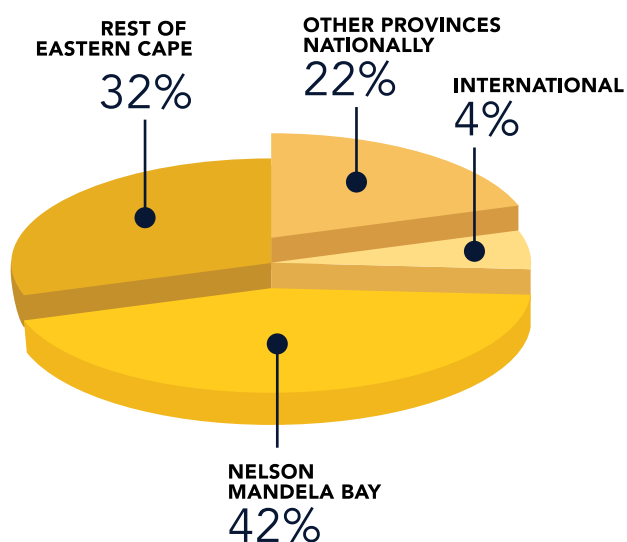


GENDER DISTRIBUTION

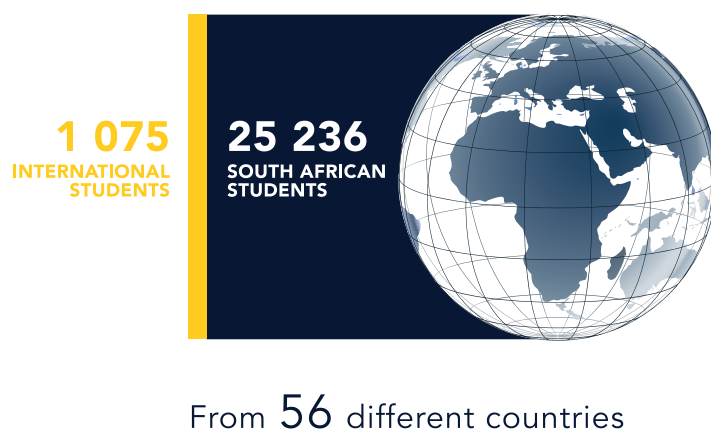


STUDENTS BY GEOGRAPHICAL ORIGIN

AS AT 15 MARCH 2018

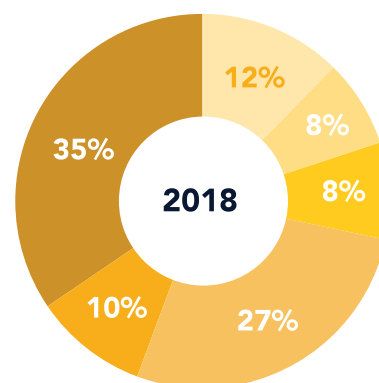
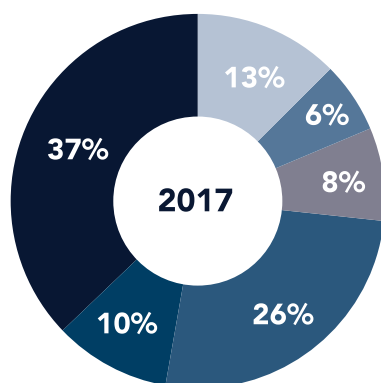


SA AND INTERNATIONAL ENROLMENTS



HIGH SCHOOL QUINTILE PROFILE

(EXCLUDING INTERNATIONAL STUDENTS)



FIRST-TIME ENTERING UNDERGRADUATE APPLICATIONS, ADMISSIONS AND REGISTRATION RATIOS 2018

	ARTS	BUSINESS & ECONOMIC SCIENCES	EDUCATION	ENGINEERING, BUILT ENVIRO & IT	HEALTH SCIENCES	LAW	SCIENCE	NELSON MANDELA UNIVERSITY
*APPLICATIONS	10 233	20 202	10 270	8 799	22 897	4 747	8 165	85 313
APPLICANTS	4 797	9 751	6 226	4 795	11 366	459	4 286	41 680
**ADMISSION: APPLICATIONS RATIO	19.4%	16.0%	7.1%	23.9%	6.5%	9.7%	17.2%	13.4%
***ADMISSION: APPLICANTS RATIO	41.3%	33.2%	11.7%	43.9%	13.2%	17.3%	32.7%	26.0%
****REGISTRATION: ADMISSIONS RATIO	64.5%	54.5%	56.9%	52.7%	51.0%	53.2%	46.9%	54.6%

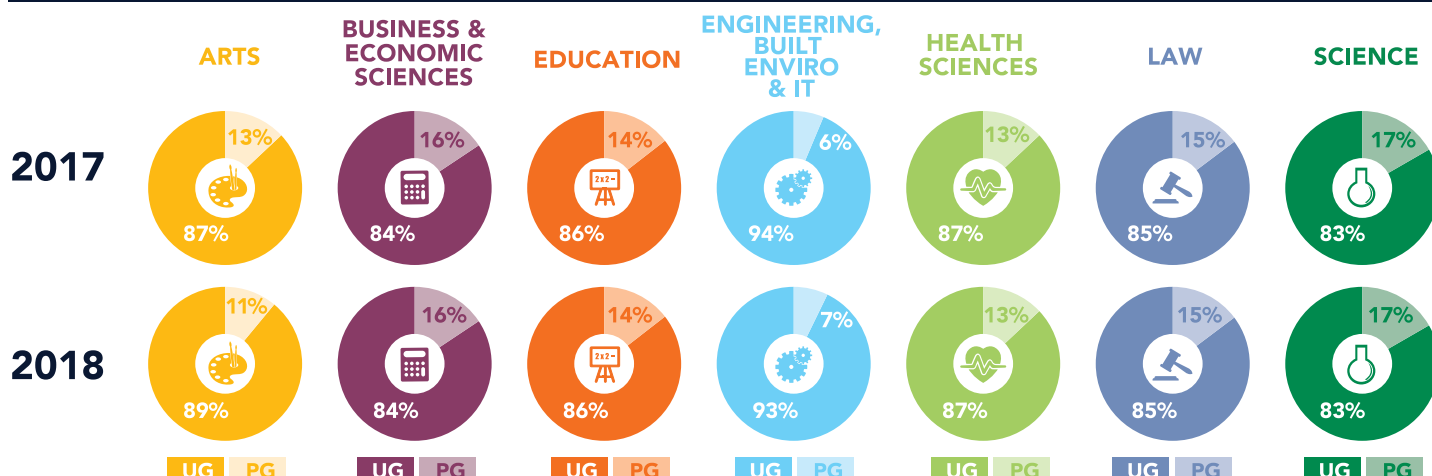
* Applicants may apply for admission to more than one qualification, therefore the number is much higher than the number of applicants.

** The admission: applications ratio is the percentage of the total number of applications made by students (which could be for more than one qualification by each student) that were approved for admission to qualifications.

*** The admission: applicants ratio is the percentage of actual students that were admitted to qualifications.

**** The registration: admissions ratio is the percentage of students that were admitted who finally registered at the University.

UNDER- AND POSTGRADUATE STUDENT ENROLMENTS



STUDENT ENROLMENTS BY UNDERGRADUATE QUALIFICATION TYPE

	ARTS	BUSINESS & ECONOMIC SCIENCES	EDUCATION	ENGINEERING, BUILT ENVIRO & IT	HEALTH SCIENCES	LAW	SCIENCE	TOTAL
CERT/DIPL	902	4 710	0	2 548	367	122	1 086	9 735
DEGREES	2 520	2 346	1 640	1 751	2 720	866	1 115	12 958
% GROWTH	20.5%	-0.4%	11.3%	9.6%	4.4%	1.1%	4.3%	6.2%

DISTRIBUTION OF UNDERGRADUATE ENROLMENTS BY QUALIFICATION TYPE



STUDENTS WITH DISABILITIES (DISCLOSED)

AS AT 13 MARCH 2018

356
2017

Approximately **1.95%** of **26 484** total students have disclosed their disabilities for 2018

DEMOGRAPHIC PROFILE:

The largest grouping represented by Black students (255 or 49.5%) followed by White students (205 or 39.8%) of total students with disabilities

DISABILITY CATEGORIES:

Majority have specific learning difficulties followed by mobility impairments

FACULTIES:

The largest proportion of students with disabilities is in the Faculty of Business and Economic Sciences (143 or 28%) followed by EBEIT (107 or 21%).

515
2018

STUDENTS RECEIVING FINANCIAL AID

38% Of all students are receiving some form of financial aid



STUDENT TRANSPORT



53 TAXIS

265

TRIPS PER DAY
BY TAXI

3 975

STUDENTS
TRANSPORTED
BY TAXI



16 SHUTTLE BUSES

101

TRIPS PER DAY
BY BUS

7 272

STUDENTS
TRANSPORTED
BY BUS



Number of trips/frequency increased to cater for growing demand and 1 additional bus

WIFI & PC ACCESS

STUDENTS ACCESSING WIFI ON CAMPUS:

25 602

STUDENTS LOGGED INTO WIFI THIS YEAR

STUDENT : PC RATIO ON CAMPUS:

MISSIONVALE
480 **1 800**
1 : 3.75

GEORGE
250 **1 459**
1 : 5.84

2ND AVE
374 **5 010**
1 : 13.39

NORTH
1035 **6 128**
1 : 5.92

SOUTH
1501 **12 326**
1 : 8.21

Bird Street campus and Sanlam Student Village have 43 and 24 PCs accessible to students, respectively



123
OUT OF 132

Across the campuses, teaching labs make up the majority of labs (123 out of 132), with 9 general computer labs across all campuses.

STUDENT ACCOMMODATION: 2017-2018



GEORGE
CAMPUS



PORT ELIZABETH
CAMPUS



ON-CAMPUS BEDS:

TOTAL:

2017

421

2 850

3 271

2018

421

2 849

3 270



GEORGE
OFF-CAMPUS



PORT ELIZABETH
OFF-CAMPUS

ACCREDITED OFF-CAMPUS BEDS:

TOTAL:

248

4 445

4 693

309

6 337

6 646