

## Traditional Mandate (Missions) of a University



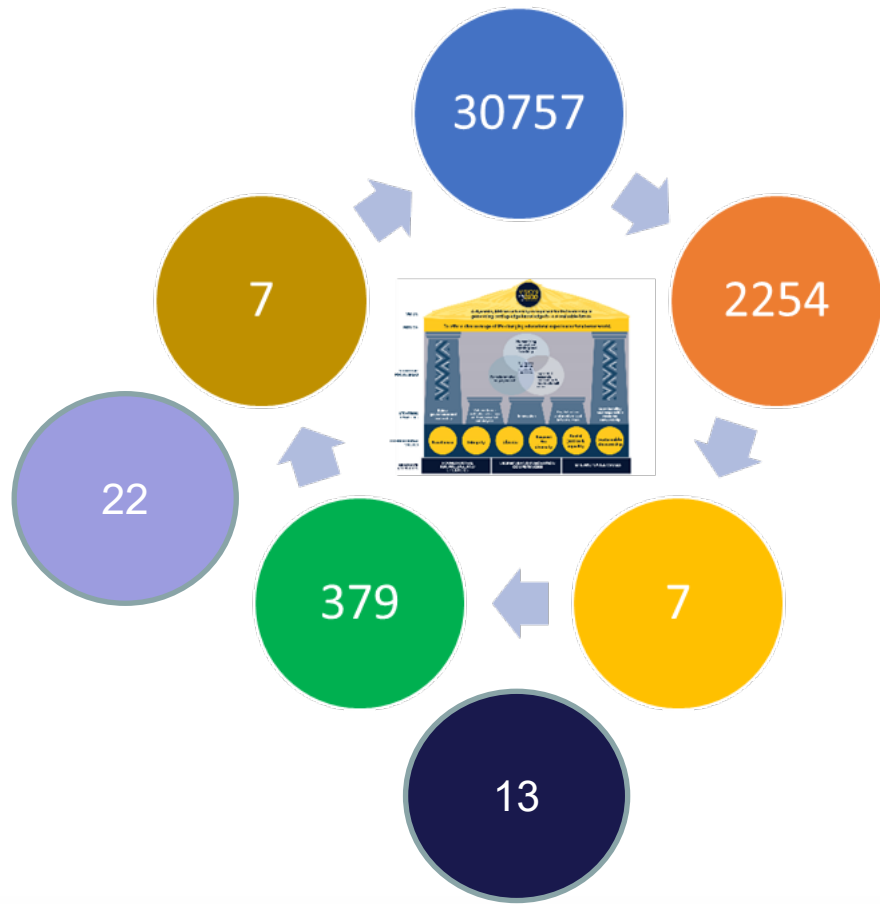
teaching and  
learning



research



engagement

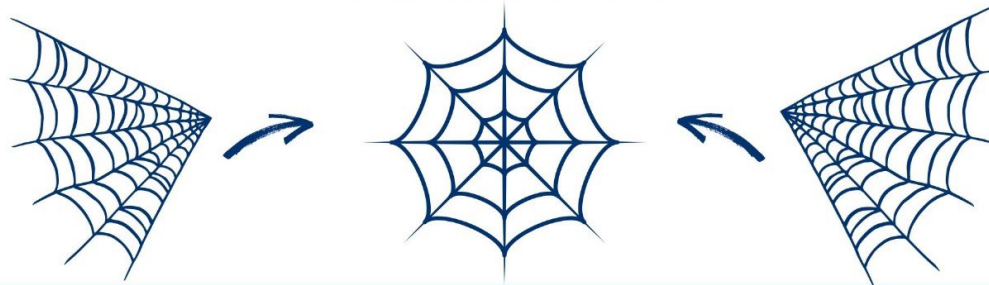


# A Re-imagined Approach

**The HoC endeavours to co-create “physical spaces where the University meets the community to engage on common platforms to find solutions to problems that affect our immediate communities,”  
Muthwa (2018).**

Vice Chancellor Inaugural Speech (2018)

## CONVERGED ENGAGEMENT



### CONVENTIONAL STAKEHOLDER ENGAGEMENT

- the university engages as the stakeholder's 'social project'

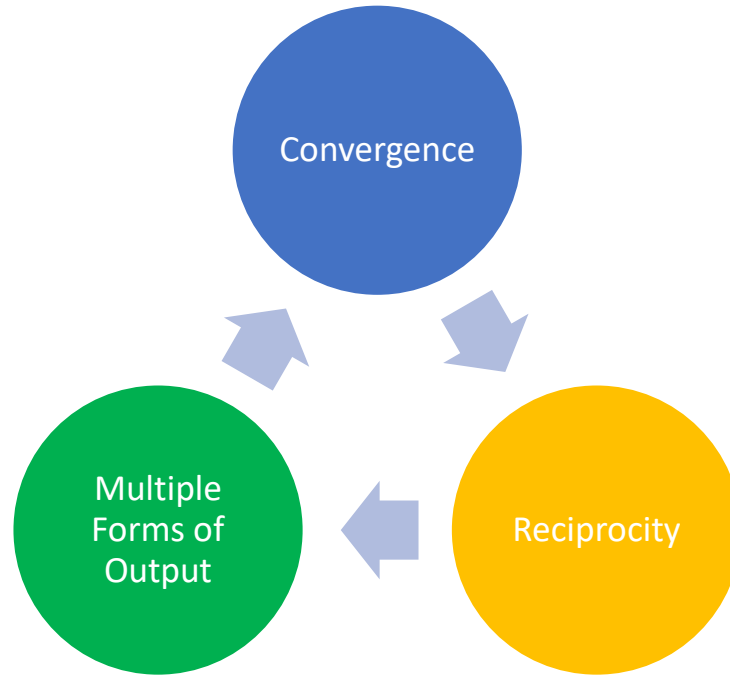
### CONVERGED ENGAGEMENT

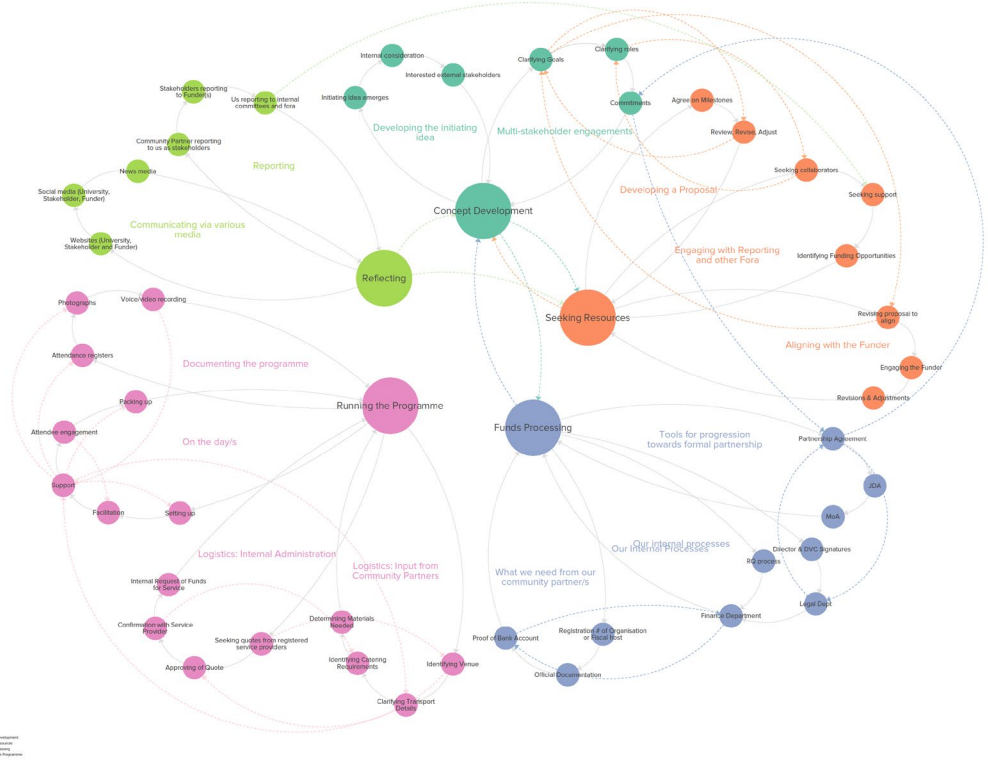
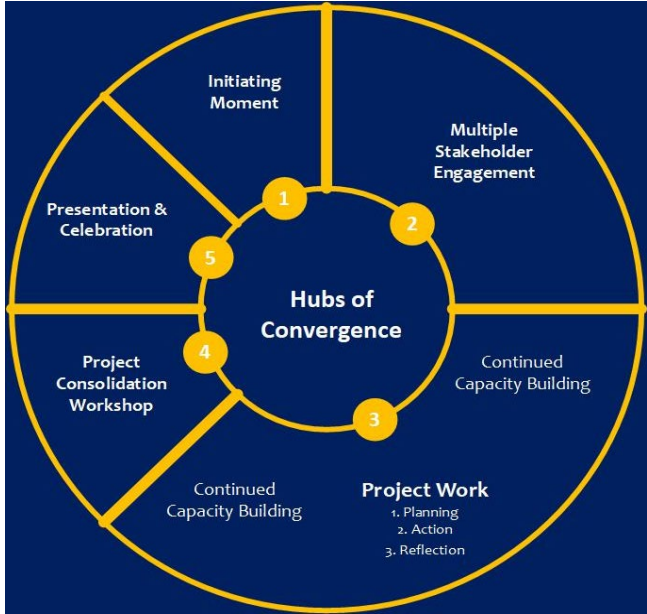
- equalisation through convergence
- the university-stakeholder engage society as its 'social project'
- initiatives and experimentations cultivate knowledge democratisation

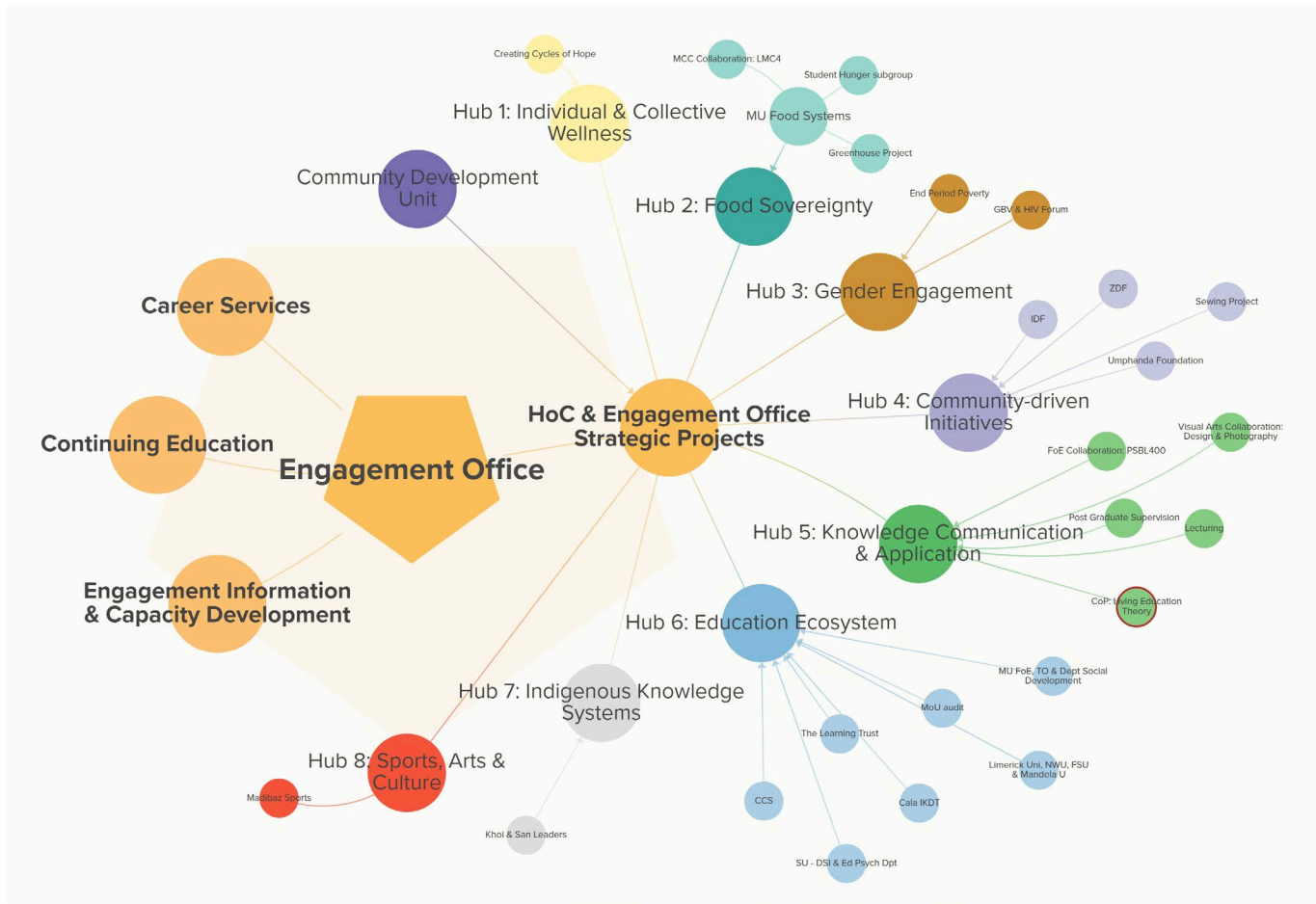
### CONVENTIONAL COMMUNITY ENGAGEMENT

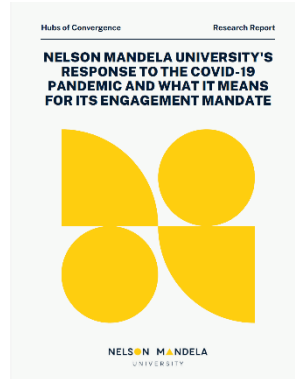
- the university engages the community as its 'social project'

# Organising Principles









| Hubs                                       | Project Focus  | Internal   | External                                |
|--|--|--|---|
| 1. Individual and Collective Wellness      | Community Based Substance Abuse Programme                      | Transformation Office, School of Development Professions                         | FBO: The Hope Revolution Vision         |
| 2. Food Sovereignty                        | Food Systems Programme   | 28 Food Related Projects   | NMF, Ikhalala, Zwide                    |
| 3. Gender Engagement                       | End Period Poverty   | Dean of Student Life and Development   | Mina Cup Foundation, Give of the Givers |
| 4. Community Driven Initiatives            | Zwide Development Forum  | HoC  | Ranyaka; NMF                            |
| 5. Knowledge Communication and Application | Students: Visual and Performing Arts; Media and Communications | Schools: Visual and Performing Arts; Media and Communications                    | iKhalala;                               |
| 6. Education Ecosystem                     | Rural Engagement Strategy                                      | CCS; Faculty Science   | iDKT; Standard Bank                     |
| 7. Indigenous Knowledge Systems            | Khoi-San pilot project   | School of Architecture   | 10 Khoi-San Chiefs                      |
| 8. Sports, Arts and Culture                | Fundraising to establish hub                                   | Madibaz Sport; Comms and Marketing; Strategic Resource Mobilisation and Advocacy | Major Chiefs Soccer Club                |



