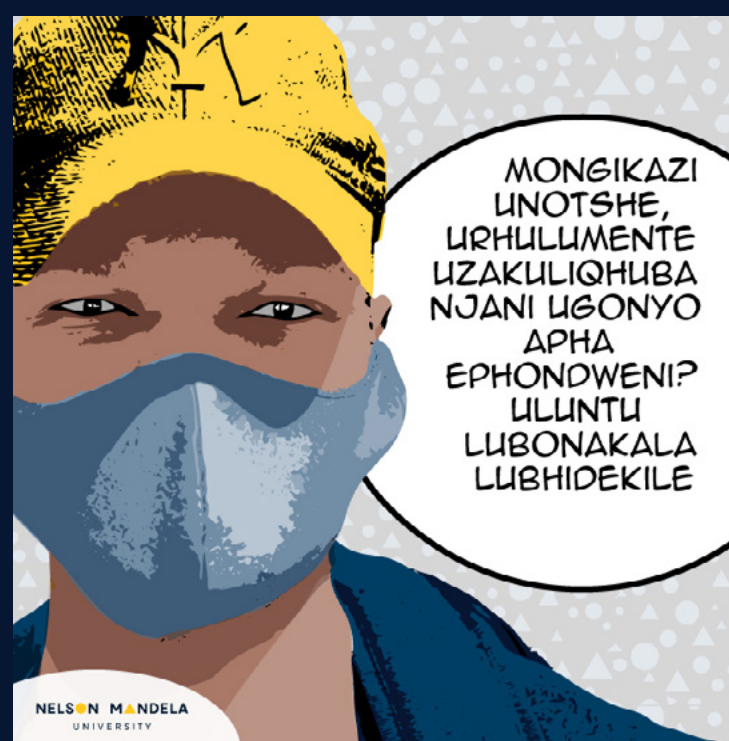


eRoma TIMES



MONGIKAZI
LUNOTSHE,
LIRHULUMENTE
LIZAKULIQHUBA
NJANI UGONYO
APHA
EPHONDWENI?
LILUNTLU
LUBONAKALA
LUBHIDEKILE



BHOTA, SIYA. ENKOSI
NGOKUBONAKALISA UMDLA NGALOMBA.
OKWANGOKU SINAMAZIKO AMABINI
KUPHELA APHA EMPHUMA KOLONI,
ATYUNJELWE UKUQHUBA UGONYO LWE
NTSHOLONGWANE I COVID-19
KWESISGABA, NESAZIWA NJENGE
EARLY ASSISTANT PROGRAMME
NGOLWIMI LWASEMZINI.
OKO KLHETHA UKUBA
SIZAKUQALA NGABASEBENZI
ABAPHAMBILI ABAFANA
NOOGQIRHA KWAKUNYE
NABONGIKAZI. KUFUNEKA
BAQALE BABHALISE
KWIFOMU EKWI-INTANETHI
EBIZWA UKUBA YI EVDS,
YONA EMELE
ELECTRONIC VACCINE
DATA SYSTEM NGOLWIMI
LWASEMZINI.

UMSEBENZI NGAMNYE LIZAKUFUMANA
IMIYALEZO EMITHATHU ETHI:

1. IFOMU YOKUBHALISA IFUNYENWE
2. ISCELO SOKUBHALISA SIVUNYIWE. LO WONA UMYALEYO NEKHONKCO LE INTANETHI, ELINEMIBUZO EMBALWA EKUFUNEKA IPHENDULWE. KWAKUNYE NE
3. VAWUTSHA EBONISA UMHLA NENDAWO OZAKUGONYELWA KUYO OYIKHETHILEYO

EMVA KOKUBA
LIFUMENE
I-VAWUTSHA LEYO,
KUFUNEKA WENZE
IDINGA
LOKUGONYWA



IKHONA
NENOMBOLO
YOMNKEBA
ONGATSALELA
KUYO UKUBA
AWUKWAZI
LIKWENZA
IDINGA KWI
INTANETHI

OH
HAYI KUHLA XA
IKHONA ENYE INDLELA
YOKWENZA IDINGA, KUBA
ABANYE BETHU ABAKWAZI
LUKUSEBENZISA
LUBUXHAKA-XHAKA
BALEMIHLA



LIZE
LIQAPHELE
KE JOSH
UKUBA
KUSAQALWA
NGABASEBENZI
ZI BESEBE
LEZEMPILO
OKWANGOKU



CORONAVIRUS (COVID-19) #MaskUpMandela Campaign

CORONAVIRUS OUTBREAK NATIONAL HOTLINE:

0 800 029 999

08H00 - 16H00 (MONDAY - FRIDAY)

For more information on COVID-19 go to:
<https://www.mandela.ac.za/coronavirus>



#itisinyourhands